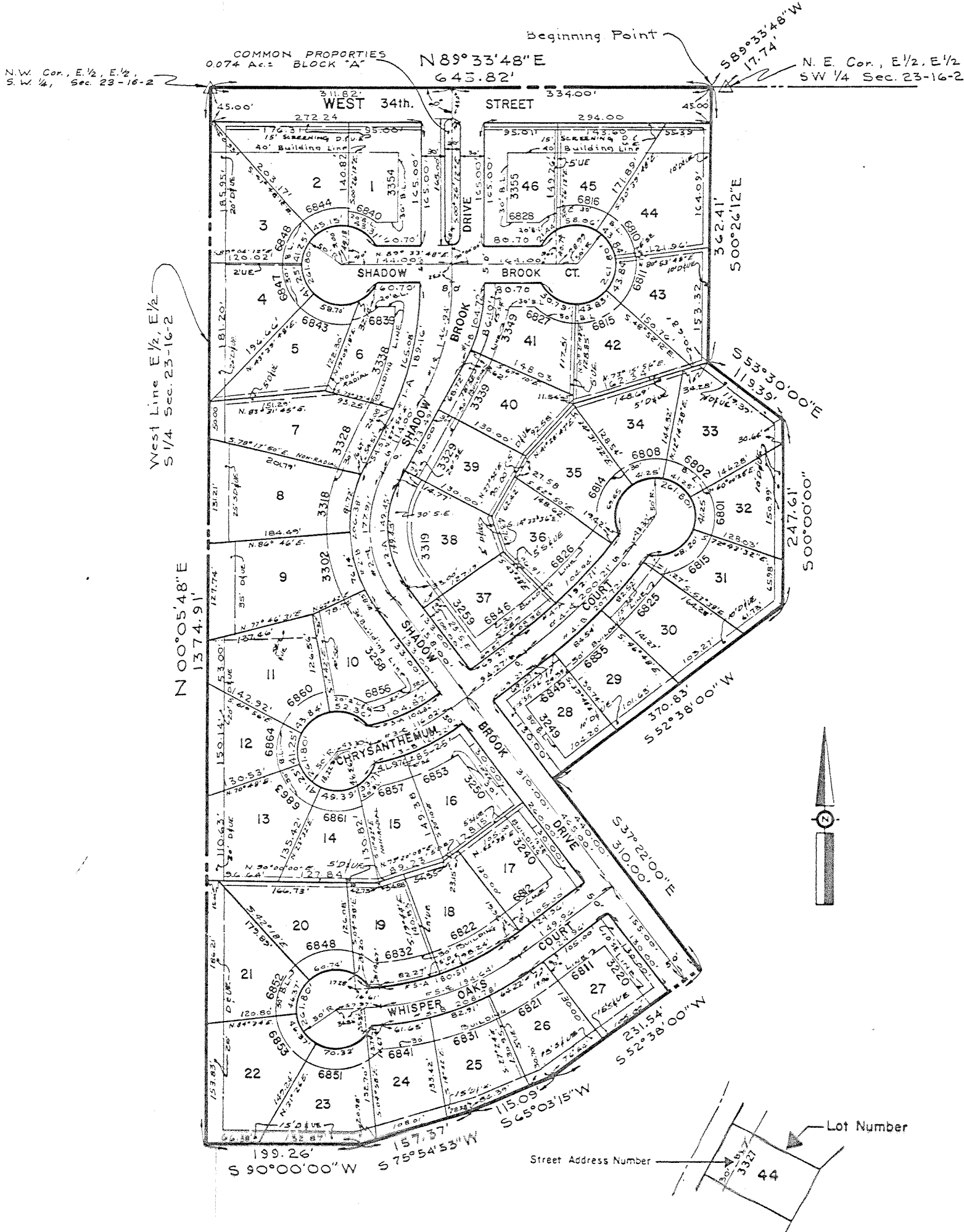


TWIN OAKS, SECTION ONE
INSTRUMENT #69-55969
RECORDED OCTOBER 23, 1969
RESTRICTIONS

- A. All streets shown and not heretofore dedicated are hereby dedicated to the public.
- B. All numbered lots in this addition shall be designated as residential lots. Only one single family dwelling with accessory building and not exceeding two stories in height may be erected or maintained on said lots.
- C. Front and side building lines are established as shown on this plat between which lines and the property lines of the street, no structure shall be erected or maintained. No fence, wall, hedge or shrub planting which obstructs sight lines at elevations between 2 and 6 feet above the street shall be placed or permitted to remain on any corner lot within the triangular area formed by the street property lines and a line connecting points 25 feet from the intersection of said street lines, or in the case of a rounded property corner, from the intersection of the street lines.

TWIN OAKS - SECTION ONE

INSTRUMENT #69-55969



TYPICAL NUMBERING DESIGNATION