



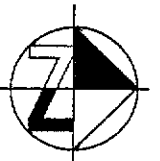
Seminole Boat Club

442

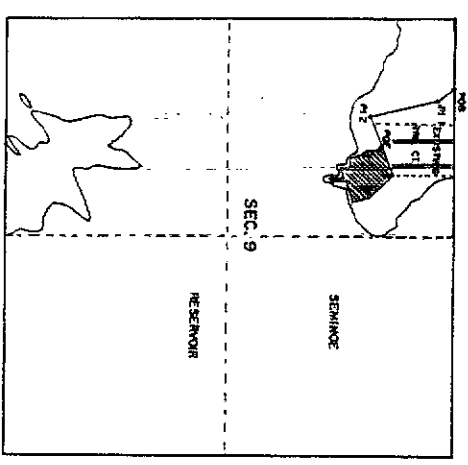
BANKERS COVE SUBDIVISION
 IN E 1/2 NW 1/4 SEC 9, T24N, R84W, IN THE COUNTY OF CARBON, STATE OF WYOMING

EXISTING SEMINOLE BOAT CLUB HOUSING AREA.

R 84 W



SCALE 1" = 40'



ACCESS ROAD AND VICINITY MAP
 SCALE 1" = 1000'

LEGAL DESCRIPTION FOR ACCESS ROAD
 1. 50ft wide strip of land located in the NW 1/4 of Sec. 9, T24N, R84W, of the 1st 1/2, Carbon County, Wyoming, where corners 11 are completely described as follows:
 Beginning at a point on the North line of said Sec. 9, which lies N 87° 43' 00" E, 843.45ft, from the Northwest corner of Sec. 9;
 2. Thence S 89° 12' 22" E, 217.64ft, to a point;
 3. Thence S 17° 10' 28" E, 1027.25ft, to a point;
 4. Thence N 83° 04' 00" E, 370.70ft, to the point at which said point being S 89° 17' 14" E, 1803.83ft from the Northwest corner of Sec. 9, said strip of land containing 1.854 acres, more or less.

SURVEYOR'S CERTIFICATE

I, Meritt A. Peterson, do hereby certify that I am a registered land surveyor licensed under the laws of the State of Wyoming, and that this plat is a true, correct, and complete plat of the Bankers Cove Subdivision as set out, points, distances, and show hereon. That such plat was made from an accurate survey of said property by me and under my supervision and correctly shows the location and dimensions of the lots, easements, and streets of said subdivision as the same are stated upon the ground in compliance with Carbon County, Wyoming, regulations governing the subdivision of land.

Wyoming Reg. No. 544, L.S. *Meritt A. Peterson*
 In witness whereof I have set my hand and seal this 12th day of April, A.D., 1987.



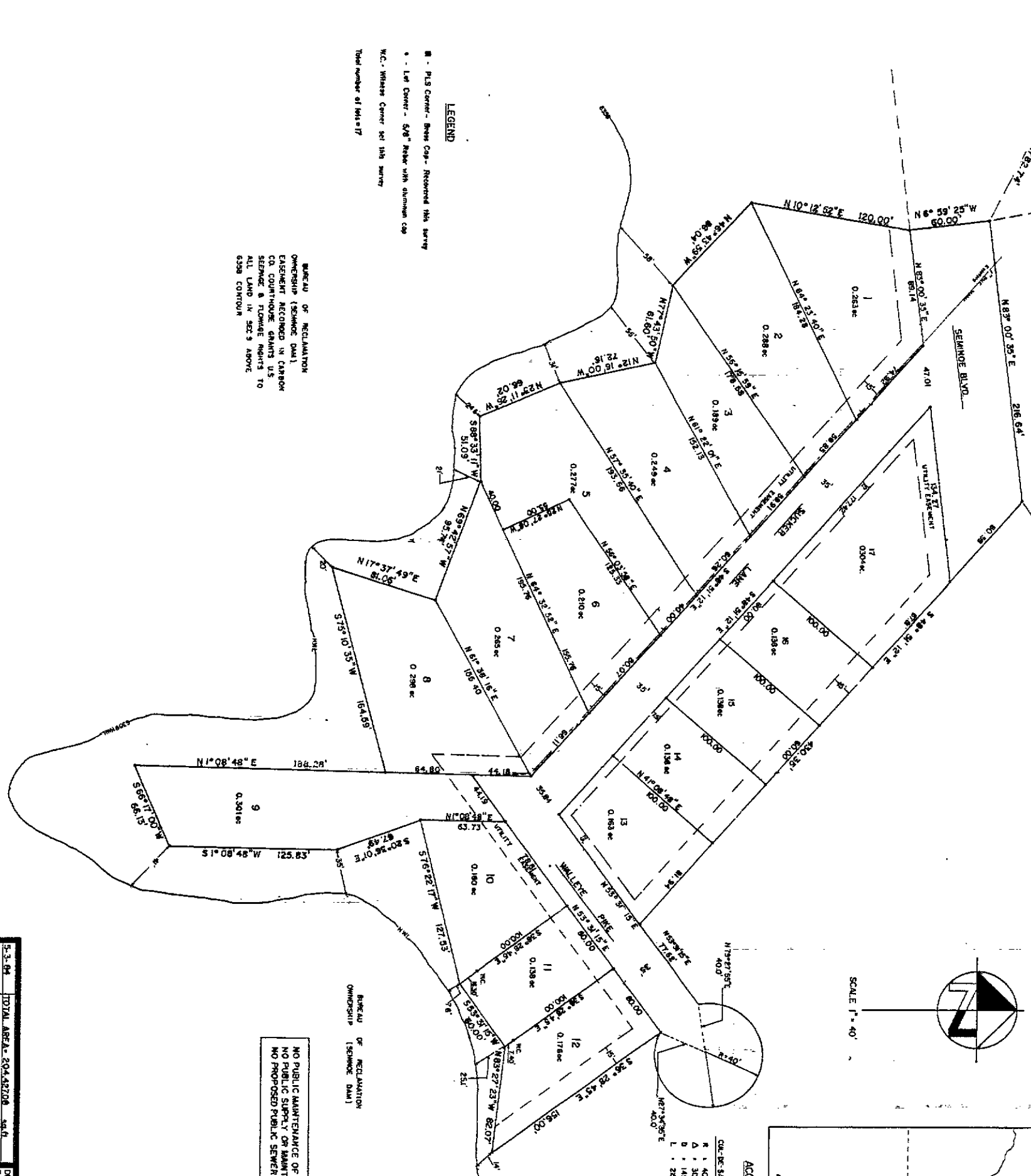
Meritt A. Peterson
 Meritt A. Peterson
 Notary Public

NO PUBLIC MAINTENANCE OF STREETS OR ROADS
 NO PUBLIC SUPPLY OR MAINTENANCE OF WATER SYSTEM
 NO PROPOSED PUBLIC SEWER DISPOSAL SYSTEM

BUREAU OF RECLAMATION
 OWNERSHIP (SEMINOLE DAM)

BUREAU OF RECLAMATION
 OWNERSHIP (SEMINOLE DAM)
 EASEMENT RECORDED IN CARBON CO. COURTHOUSE GRANTS U.S. SEMINOLE & FLOWAGE RIGHTS TO ALL LAND IN SEC. 9 ABOVE
 6308 CONTOUR

LEGEND
 M - PLS Corner - Brass Cap - Re-recorded 1st survey
 * - Lat Corner - 5/8" Brass with aluminum cap
 W.C. - Witness Corner per 1st survey
 Total number of lots: 17



5-3-84	TOTAL AREA - 204,422.06 ac	DATE: 7-21-83
4-18-84	OWNER'S SURVEY	CHECKED BY: J.M.
	OWNER'S SURVEY	DATE: 7-21-83
		SCALE: 1" = 40'
		SHEET: 2 OF 2
		REVISION

ROBERT JACK SMITH & ASSOC., INC.
 LAND SURVEYORS
 CONSULTING ENGINEERS
 FAYETTEVILLE, WYOMING

BANKERS COVE SUBDIVISION
 CARBON COUNTY, WYOMING