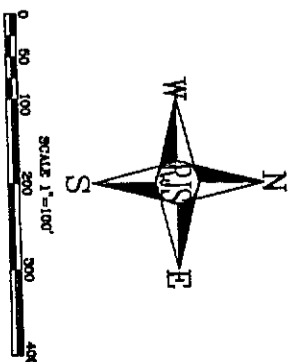
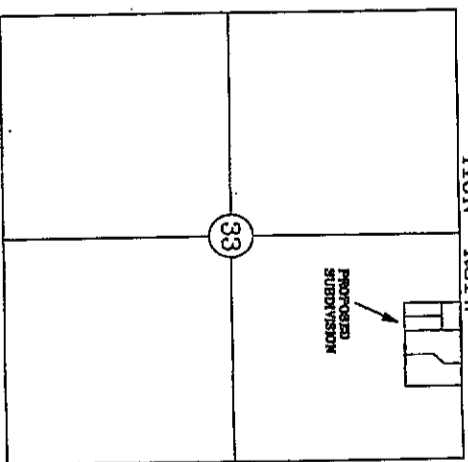
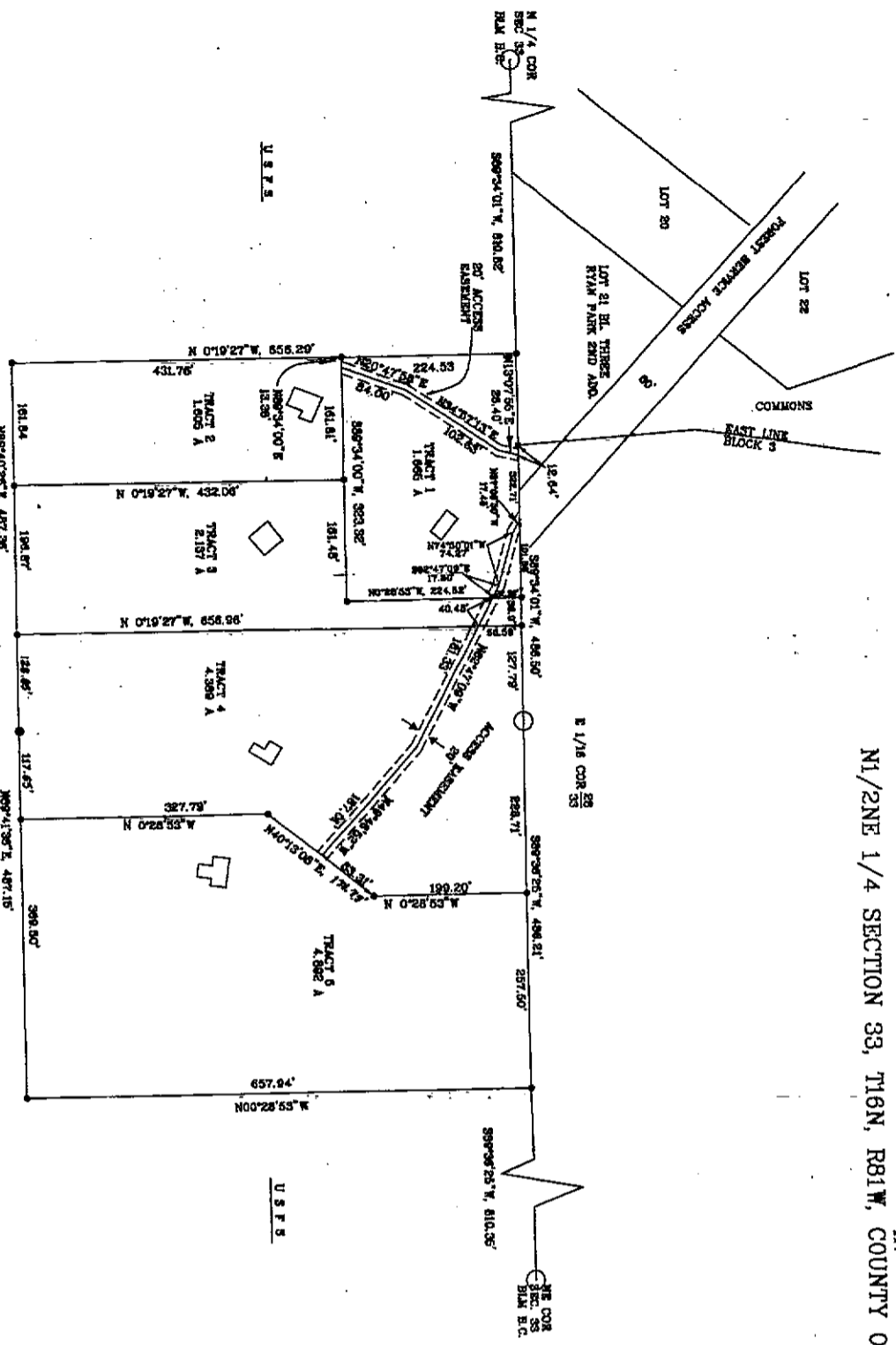




# FINAL PLAT

## BARRETT CREEK SUBDIVISION II

IN N1/2NE 1/4 SECTION 33, T16N, R81W, COUNTY OF CARBON, STATE OF WYOMING



NO PUBLIC SEWER SYSTEM  
NO PUBLIC ROADS  
NO PUBLIC WATER SYSTEM  
NO PUBLIC MAINTENANCE OF ROADS

### LEGEND

- - REM OR USER LAND SURVEY CORNER RECOVERED
- - REMARK RECORDED THIS SURVEY
- - 5/8" REBAR WITH ALUMINUM CAP SET THIS SURVEY

THESE LANDS ARE SUBJECT TO A WETLANDS RESERVATION AS DOCUMENTED IN THE PLAT RECORDED BY SEE PLAT FOR THE MISC. RECORDS OF THE CARBON COUNTY CLERK, BARRETT, WYOMING

THIS AND OTHER SYSTEMS FOR ANY FURTHER DEVELOPMENT MUST MEET THE REQUIREMENTS OF THE WYOMING STATE ENGINEER AND WYOMING DEPARTMENT OF ENVIRONMENTAL QUALITY (DEQ)

ACCESS EASEMENTS SHOWN ARE FOR THE HOUSING USE ONLY  
NO SURFACE WATER RIGHTS EXIST FOR THESE TRACTS

PREPARED BY:  
Robert Jack Smith and Assoc., Inc  
Consulting Land Surveyors  
1015 Harshman St., P.O. Box 1104  
Rawlins, Wyo. 82301  
307-324-6282

Job No. 7498, Data Prepared 8/11/95

5 Tracts, 14,668 Acres

### USFS

(B) **TITLE CERTIFICATE**  
Deborah R. Cook does hereby certify that I have examined the title to all lands shown upon this plat and that title to such lands is vested and free and clear of all liens, taxes and encumbrances, except as follows: *None*  
Dated this 23 day of June, A.D. 1998  
*Deborah R. Cook* Examiner

### USFS

(C) **SURVEYOR'S CERTIFICATE**  
I, Martin A. Padman, do hereby certify that I am a registered land surveyor licensed under the laws of the State of Wyoming and that this plat is a true, correct, and complete plat of the Barrett Creek Subdivision II as laid out, plotted, deduced and shown hereon. That each part was surveyed, plotted and shown hereon, that each part was well shown and correctly surveyed, plotted and shown hereon, that the bearings and distances of each subdivision are the same as stated upon the ground in compliance with Carbon County regulations governing the subdivision of land.  
In witness whereof I have set my hand and seal this 2 day of July, A.D. 1998

*Martin A. Padman*  
Surveyor

### USFS

(D) **PLANNING COMMISSIONER'S CERTIFICATE**  
This plat approved by the Carbon County Planning Commission this 15 day of June, A.D. 1998  
*Shirley A. Chalmers* Chairman

### USFS

(E) **COUNTY COMMISSIONER'S CERTIFICATE**  
This plat approved by the Board of County Commissioners of Carbon County Wyoming, this 15 day of June, A.D. 1998, in compliance with the provisions of the public dedications shown hereon and for convenience to the County of Carbon, Wyoming, and for the purpose of the public dedications shown hereon, Carbon County for financing or constructing of improvements, streets, or easements dedicated to the public use and benefit, agreed to by the Carbon County for maintenance of streets which are not dedicated to the public use until all improvements have been completed to the satisfaction of the Board of County Commissioners and accepted by proper resolution.  
Dated this 15 day of June, A.D. 1998  
*Shirley A. Chalmers* County Clerk

### USFS

(F) **CERTIFICATE OF COUNTY ENGINEER**  
Approved this 2 day of July, A.D. 1998 by  
*Martin A. Padman* County Engineer of the County of Carbon, Wyoming

### USFS

(G) **CLERK OF RECORDS'S CERTIFICATE**  
This plat was filed for record in the office of the Clerk and Recorder of Carbon County Wyoming, this 15 day of June, A.D. 1998, in Book 837 Page No. 116

*Martin A. Padman* Clerk and Recorder  
County of Carbon, Wyoming

### (A) CERTIFICATION OF DEDICATION AND AGREEMENT

Know all men by these presents that Barrett Creek Recreational Cabin Owners Association being sole owner (a) in the entire of all that real property described as follows: Northwest 1/4 of Sec. 33, T16N, R81W, Carbon County Wyoming more completely described as follows: Beginning at the East 1/16 corner between Sec. 33 and 29, at N1/4 post with N1/4 corner 889°34'01"W, 488.50' N, along the North line of said Sec. 33 (equal to a call 0°47'27"E, 658.40' N, to a 5/8" rebar and N1/4 corner; thence 889°40'20"E, 487.10' N, to a 5/8" rebar and N1/4 corner; thence N 02°05'57"W, 857.04' N, to a 5/8" rebar and N1/4 corner on the North line of said Sec. 33; thence 88°42'11" along the North line of said Sec. 33 (equal to a call 0°47'27"E, 658.40' N, to a 5/8" rebar and N1/4 corner) containing 14.668 acres, more or less, here by these presents laid out, plotted, and subdivided the same into lots and blocks as shown hereon, with the free consent, and in accordance with the plan shown hereon, and for the purpose of the public dedications shown hereon, Carbon County, Wyoming, for financing or constructing of improvements, streets, or easements dedicated to the public use and benefit, agreed to by the Carbon County for maintenance of streets which are not dedicated to the public use until all improvements have been completed to the satisfaction of the Board of County Commissioners and accepted by proper resolution for the subdivision as Document No. 837-116

Executed this 15 day of June, A.D. 1998

By *Shirley A. Chalmers* President  
*Martin A. Padman* Secretary  
STATE OF WYOMING  
COUNTY OF CARBON

The foregoing dedicating was submitted by Barrett Creek Recreational Cabin Owners Association on this 15 day of June, A.D. 1998, by Shirley A. Chalmers Secretary of said Association in witness my hand and official seal.

By Commission Expires 1-30-99  
*Shirley A. Chalmers* Notary Public



OWNER AND DEVELOPER:  
Barrett Creek Recreational  
Cabin Owners Association  
2411 West Vine Dr.  
Ft. Collins, Co. 80521  
SHEET 1 OF 1