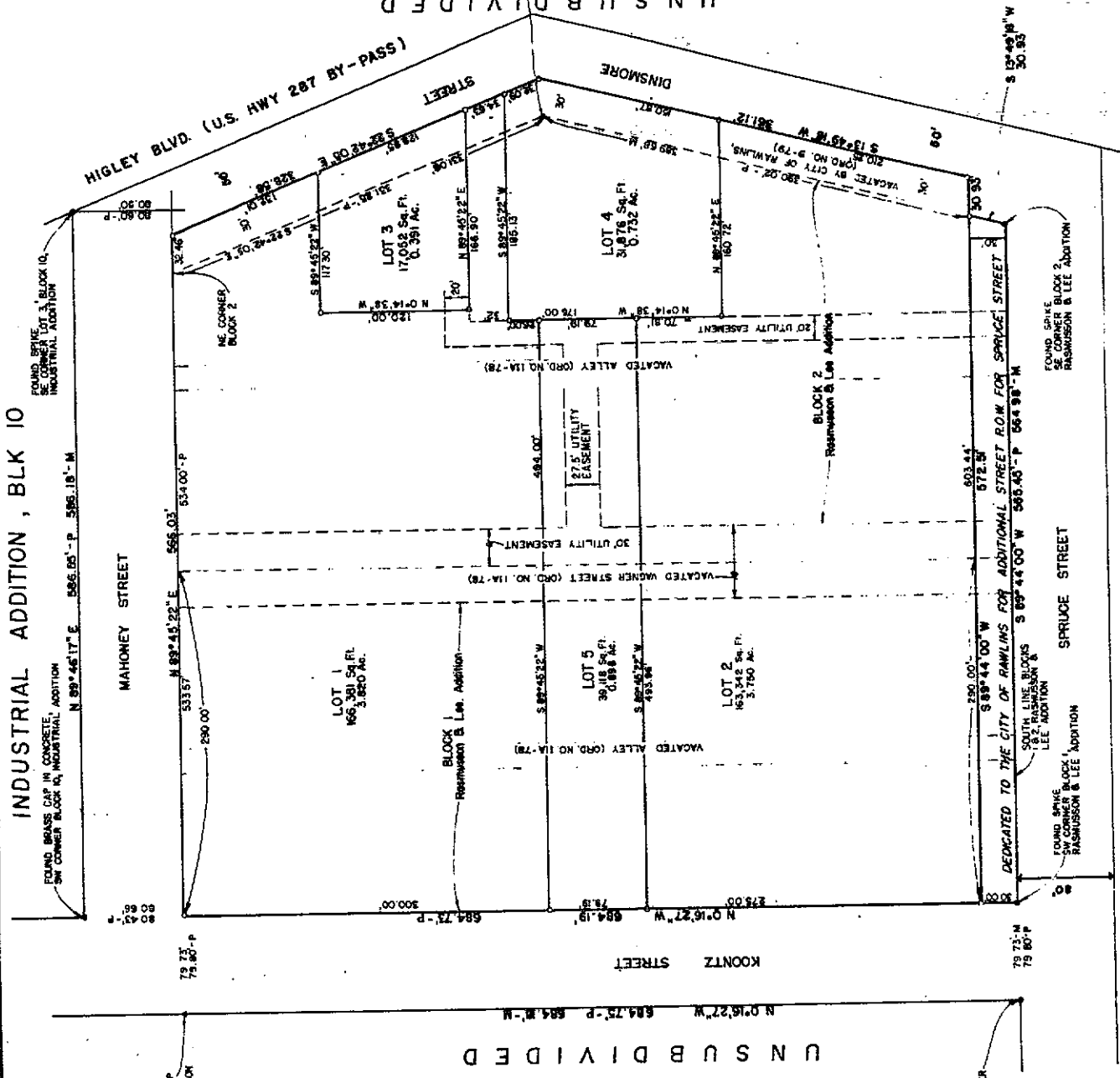


INDUSTRIAL ADDITION, BLK 10



FOUND BRASS CAP IN CORNER OF INDUSTRIAL ADDITION

FOUND BRASS CAP IN CORNER OF INDUSTRIAL ADDITION

FOUND BRASS CAP IN CORNER OF INDUSTRIAL ADDITION

FOUND BRASS CAP IN CORNER OF INDUSTRIAL ADDITION

FOUND BRASS CAP IN CORNER OF INDUSTRIAL ADDITION

FOUND BRASS CAP IN CORNER OF INDUSTRIAL ADDITION

FOUND BRASS CAP IN CORNER OF INDUSTRIAL ADDITION

FOUND BRASS CAP IN CORNER OF INDUSTRIAL ADDITION

FOUND BRASS CAP IN CORNER OF INDUSTRIAL ADDITION

FOUND BRASS CAP IN CORNER OF INDUSTRIAL ADDITION

FOUND BRASS CAP IN CORNER OF INDUSTRIAL ADDITION

FOUND BRASS CAP IN CORNER OF INDUSTRIAL ADDITION

FOUND BRASS CAP IN CORNER OF INDUSTRIAL ADDITION

FOUND BRASS CAP IN CORNER OF INDUSTRIAL ADDITION

FOUND BRASS CAP IN CORNER OF INDUSTRIAL ADDITION

FOUND BRASS CAP IN CORNER OF INDUSTRIAL ADDITION

FOUND BRASS CAP IN CORNER OF INDUSTRIAL ADDITION

FOUND BRASS CAP IN CORNER OF INDUSTRIAL ADDITION

FOUND BRASS CAP IN CORNER OF INDUSTRIAL ADDITION

FOUND BRASS CAP IN CORNER OF INDUSTRIAL ADDITION

FOUND BRASS CAP IN CORNER OF INDUSTRIAL ADDITION

FOUND BRASS CAP IN CORNER OF INDUSTRIAL ADDITION

FOUND BRASS CAP IN CORNER OF INDUSTRIAL ADDITION

FOUND BRASS CAP IN CORNER OF INDUSTRIAL ADDITION

FOUND BRASS CAP IN CORNER OF INDUSTRIAL ADDITION

FOUND BRASS CAP IN CORNER OF INDUSTRIAL ADDITION

FOUND BRASS CAP IN CORNER OF INDUSTRIAL ADDITION

FOUND BRASS CAP IN CORNER OF INDUSTRIAL ADDITION

FOUND BRASS CAP IN CORNER OF INDUSTRIAL ADDITION

FOUND BRASS CAP IN CORNER OF INDUSTRIAL ADDITION

FOUND BRASS CAP IN CORNER OF INDUSTRIAL ADDITION

FOUND BRASS CAP IN CORNER OF INDUSTRIAL ADDITION

FOUND BRASS CAP IN CORNER OF INDUSTRIAL ADDITION

FOUND BRASS CAP IN CORNER OF INDUSTRIAL ADDITION

FOUND BRASS CAP IN CORNER OF INDUSTRIAL ADDITION

FOUND BRASS CAP IN CORNER OF INDUSTRIAL ADDITION

FOUND BRASS CAP IN CORNER OF INDUSTRIAL ADDITION



LEGEND
 Subdivision Boundary
 2" Scale set by others for Rasmussen & Lee Addition
 Corrected Measurement set by others
 Rebars 6, cop by VTN
 Plotted Distance
 Measured Distances

DATE OF PREPARATION
 July 23, 1980

BASIS OF BEARING
 The south line of Block 10, 2, 1980 was found in place. S 89° 44' 00" W, as called on plat of Rasmussen & Lee Addition.

DATE OF PREPARATION
 July 23, 1980

FOUND BRASS CAP IN CORNER OF INDUSTRIAL ADDITION

FOUND BRASS CAP IN CORNER OF INDUSTRIAL ADDITION

FOUND BRASS CAP IN CORNER OF INDUSTRIAL ADDITION

FOUND BRASS CAP IN CORNER OF INDUSTRIAL ADDITION

FINAL SUBDIVISION PLAT OF CITY MARKET SUBDIVISION
 A RESUBDIVISION OF BLOCKS 1&2 RASMUSSEN & LEE ADDITION TO THE CITY OF RAWLINS, CARBON COUNTY, WYOMING

DEDICATION
 WE, THE UNDERSIGNED, HEREBY WARRANT THAT WE ARE ALL THE ONLY PARTIES HAVING ANY RECORDED TITLE INTEREST IN THE LAND SHOWN ON THIS PLAT AND, BY THESE PRESENTS, SUBDIVIDED AS CITY MARKET SUBDIVISION. THIS SUBDIVISION OF THE REAL ESTATE DESCRIBED HEREON AND AS APPEARING ON THIS PLAT, IS WITH THE FREE CONSENT, AND IN ACCORDANCE WITH THE DESIRES OF THE OWNERS AND OWNERS. WE HEREBY DEDICATE TO THE PUBLIC, AS OPEN SPACE, ALL RIGHTS-OF-WAY SHOWN HEREON FOR THE PUBLIC, STREETS, AND DRAINAGEWAYS. THE EASEMENTS SHOWN ARE PROVIDED FOR THE PURPOSES INDICATED.

LEGAL DESCRIPTION
 A PARCEL OF LAND, BEING ALL OF BLOCKS 1 AND 2, RASMUSSEN AND LEE ADDITION TO THE CITY OF RAWLINS, AND THE INCLUDED ALLEYS AND VACUER STREET AS SHOWN ON CITY ORDINANCE NO. 11A-78 ON NOVEMBER 13, 1978, AND PORTION OF DINSMORE STREET AS VACATED BY CITY ORDINANCE NO. 12-78, AND ALL RIGHTS-OF-WAY IN THE CITY OF RAWLINS, COUNTY OF CARBON, STATE OF WYOMING, AND BEING MORE PARTICULARLY DESCRIBED AS FOLLOWS:
 BEGINNING AT THE SOUTHWEST CORNER OF SAID BLOCK 1, A SPIKE FOUND IN PLACE; THENCE NORTHEASTLY AND PARALLEL WITH THE WEST LINE OF SAID RASMUSSEN AND LEE ADDITION, N 0° 16' 27" W A DISTANCE OF 64.15 FEET; THENCE ALONG THE WEST LINE OF SAID BLOCKS 1 AND 2, S 89° 45' 22" E A DISTANCE OF 210.00 FEET; THENCE ALONG THE NORTHEAST CORNER OF SAID BLOCKS 1 AND 2, S 89° 45' 22" E A DISTANCE OF 32.45 FEET; THENCE S 27° 42' 05" E OF SAID NORTHEAST CORNER TO AND 30.00 FEET FROM THE EASTERN LINE OF BLOCK 2, A DISTANCE OF 328.58 FEET; THENCE S 13° 49' 18" W ALONG A LINE 30.40 FEET FROM AND PARALLEL TO THE EASTERN LINE OF BLOCK 2, A DISTANCE OF 361.12 FEET; THENCE S 89° 44' 1" W A DISTANCE OF 30.93 FEET TO THE EASTERN LINE OF BLOCK 2; THENCE S 17° 49' 18" W ALONG THE EAST LINE OF BLOCK 2, A DISTANCE OF 30.44 FEET; THENCE SOUTHWEST CORNER OF BLOCK 2, A SPIKE FOUND IN PLACE; THENCE ALONG THE SOUTH LINE OF BLOCKS 1 AND 2, A DISTANCE OF 144.48 FEET TO THE TRUE POINT OF BEGINNING CONTAINING 431,931 SQUARE FEET OR 9.782 ACRES, MORE OR LESS.

CITY MARKET, INC.
 EUGENE F. HAGERSTADT
 VICE PRESIDENT & CORPORATE SECRETARY

STATE OF COLORADO) SS
 COUNTY OF WESA)
 I, _____, 1980, BEFORE ME PERSONALLY APPEARED LEO T. PRINSTER AND EUGENE F. HAGERSTADT, TO ME KNOWN TO BE THE PERSONS DESCRIBED IN AND WHO EXECUTED THE FOREGOING INSTRUMENT, AND ACKNOWLEDGED THAT THEY EXECUTED THE SAME AS THEIR FREE ACT AND DEED.

ACKNOWLEDGEMENTS
 I, _____, 1980, BEFORE ME PERSONALLY APPEARED LEO T. PRINSTER AND EUGENE F. HAGERSTADT, TO ME KNOWN TO BE THE PERSONS DESCRIBED IN AND WHO EXECUTED THE FOREGOING INSTRUMENT, AND ACKNOWLEDGED THAT THEY EXECUTED THE SAME AS THEIR FREE ACT AND DEED.

APPROVALS
 THIS PLAT, APPROVED BY THE CITY COUNCIL OF RAWLINS, WYOMING, ON THIS _____ DAY OF _____, 1980, AND RECORDED OF CARBON COUNTY AND FOR CONVEYANCE TO THE CITY OF CARBON COUNTY, THE PUBLIC DEDICATIONS SHOWN HEREON, SUBJECT TO THE PROVISIONS THAT APPROVAL IN NO WAY OBLIGATES THE CITY OF RAWLINS FOR FINANCING OR CONSTRUCTING OF IMPROVEMENTS ON LANDS, STREETS, OR EASEMENTS DEDICATED TO THE PUBLIC EXCEPT AS SPECIFICALLY AGREED TO BY THE CITY COUNCIL AND FURTHER THAT SAID CITY SHALL MAINTAINANCE OF STREETS WHICH ARE NOT DEDICATED NOR UNTIL ALL IMPROVEMENTS SHALL HAVE BEEN COMPLETED TO THE SATISFACTION OF THE CITY COUNCIL AND ACCEPTED BY PROPER RESOLUTION.

DATE THIS PLAT DAY OF 1980
 Mayor
 City Clerk

RECORDERS CERTIFICATE
 I, _____, THE DUTY SELECTED, QUALIFIED AND ACTING COUNTY CLERK AND EX-OFFICIO REGISTER OF DEEDS IN AND FOR CARBON COUNTY WYOMING, DO HEREBY CERTIFY THAT THIS PLAT WAS FILED IN MY OFFICE IN RAWLINS, CARBON COUNTY WYOMING, ON THIS _____ DAY OF _____, 1980, AND DULY RECORDED IN BOOK _____ AT PAGE _____ INSTRUMENT NO. _____ AT 8:00 A.M. P.M.

Plotted by _____
 VTN COLORADO, INC.
 1700 PARKWAY EAST, WYOMING

CERTIFICATE OF SURVEY
 I, BOB P. BURLER, OF ANVADA, WYOMING, HEREBY CERTIFY THAT I AM A REGISTERED LAND SURVEYOR LICENSED UNDER THE LAWS OF THE STATE OF WYOMING, THAT THIS IS A TRUE, CORRECT, AND COMPLETE PLAT OF THE CITY MARKET SUBDIVISION AS LAID OUT, PLATTED, AND DEDICATED AS SHOWN HEREON. THAT I HAVE PERSONALLY RECORDED UNDER MY ACTING SURVEYOR LICENSE THE LOCATION AND DIMENSIONS OF THE LOTS, EASEMENTS AND STREETS OF SAID SUBDIVISION.

ASSURANCES
 SATISFACTORY ASSURANCES IN THE FORM OF _____ HAVE BEEN PROVIDED TO GUARANTEE THE CONSTRUCTION OF ALL PUBLIC IMPROVEMENTS WITHIN THIS SUBDIVISION.

DATE 2-9-81

COMPLIMENTS OF FIRST AMERICAN

DATE 1-27-81

DATE 1-27-81

DATE 1-27-81

