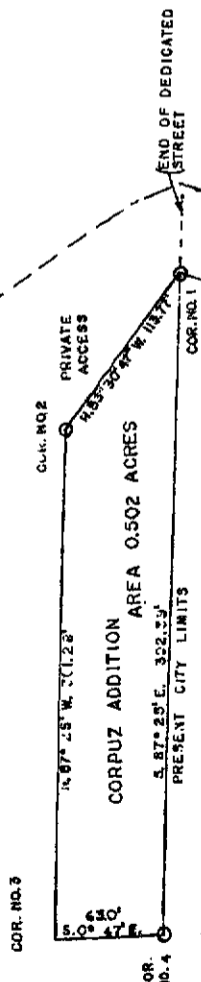


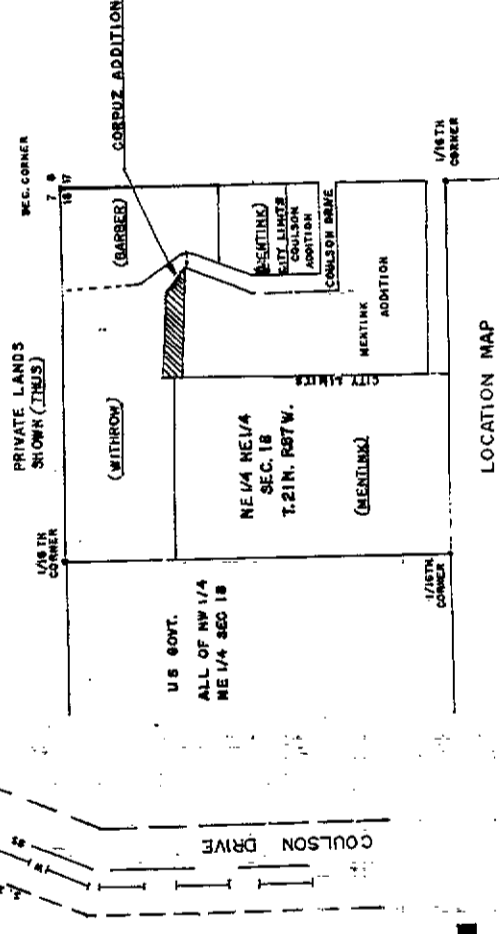
**ANNEXATION PLAT  
CORPUZ ADDITION  
TO THE CITY OF RAWLINS  
COUNTY OF CARBON, STATE OF WYOMING**  
IN THE NE 1/4 NE 1/4, SECTION 18 T. 21 N. R. 87 W. 6TH PM

CORNER NO. 2 BEARS S. 45° 18' 09" W.  
537.27' FROM RE SEC. COR. SEC. 18  
AND N. 22° 18' 52" W. 1029.28' FROM  
N. 1/16 COR. SECTIONS 18 & 17



- LEGEND**
- COR. NO. 1 ORIGINAL LOT CORNER 3/4" REBAR
  - COR. NO. 2 5/8" REBAR WITH ALUMINUM CAP
  - COR. NO. 3 1/2" BAR & CAP GROUTED INTO SOLID ROCK
  - COR. NO. 4 ORIGINAL LOT CORNER 1/2" REBAR WITH METAL POST ALONGSIDE

BEARINGS REFERENCED TO RECORD BEARINGS OF THE MENTINK ADDITION



SCALE 1" = 50'

LOCATION MAP SCALE 1" = 300'

**LEGAL DESCRIPTION**

A TRACT OF LAND IN THE NORTHEAST QUARTER OF THE NORTHEAST QUARTER OF SECTION 18, TOWNSHIP 21 NORTH, RANGE 87 WEST, COUNTY OF CARBON, STATE OF WYOMING, FURTHER DESCRIBED AS FOLLOWS: BEGINNING AT THE NORTHEAST CORNER OF LOT 9 OF THE MENTINK ADDITION TO THE CITY OF RAWLINS AS THE SAME IS PLATTED AND RECORDED IN BOOK NO. 570 PAGE NO. 19 OF THE RECORDS OF THE COUNTY CLERK OF CARBON COUNTY; THENCE N. 53° 50' 47" W. 115.77' TO CORNER NO. 2, A 5/8" REBAR WITH ALUMINUM CAP; THENCE S. 45° 18' 09" W. 537.27' TO CORNER NO. 1, A 3/4" REBAR WITH ALUMINUM CAP; THENCE N. 22° 18' 52" W. 1029.28' TO CORNER NO. 4, A 1/2" REBAR WITH METAL POST ALONGSIDE; THENCE S. 07° 28' E. 392.39' TO THE NORTHERLY CORNER OF LOT 9, TO THE POINT OF BEGINNING. SAID TRACT CONTAINING 0.502 ACRES, MORE OR LESS.

LEON R. CORPUZ JR. THE UNDERSIGNED OWNER OF THE ABOVE DESCRIBED REAL ESTATE AS THE CORPUZ ADDITION TO THE CITY OF RAWLINS, CARBON COUNTY, WYOMING. RESPECTFULLY REQUEST THAT THE SAME BE ANNEXED.

*Leon R. Corpuz Jr.*  
SIGNED

STATE OF WYOMING  
COUNTY OF CARBON,

SS THE FOREGOING INSTRUMENT WAS ACKNOWLEDGED BEFORE ME BY *Leon R. Corpuz Jr.* THIS 26 DAY OF *January*, 1977.  
WITNESS MY HAND AND OFFICIAL SEAL *James H. Bennett*  
MY COMMISSION EXPIRES *Jan. 28, 1978.*

**SURVEYORS CERTIFICATE**

I ROB ROY LOGAN, HEREBY CERTIFY THAT THIS MAP WAS MADE FROM NOTES TAKEN DURING A SURVEY MADE BY ME, AND THAT IT CORRECTLY REPRESENTS THE BOUNDARIES AND AREA OF THE TRACT SURVEYED.

*Rob Roy Logan*  
WYO. REG. NO. 5896

**RECORDERS CERTIFICATE**

THIS PLAT WAS FILED FOR RECORD IN THE OFFICE OF THE COUNTY CLERK ON THE 26th DAY OF *January*, 1977, AND DULY RECORDED IN BOOK NO. 585 PAGE NO. 18 AS INSTRUMENT NO. 635723 AT 3:30 P. M.

COUNTY CLERK *Mary A. Bradford*

**CITY ENGINEERS CERTIFICATE**

THIS PLAT APPROVED BY THE RAWLINS CITY ENGINEER THIS 26 DAY OF *January*, 1977.

CITY ENGINEER *James H. Long*

**RAWLINS PLANNING COMMISSION CERTIFICATE**

THIS PLAT APPROVED BY THE RAWLINS PLANNING COMMISSION THIS 17 DAY OF *December*, 1976.

CHAIRMAN *Gregory H. Allen*

**COUNTY COMMISSIONERS CERTIFICATE**

THIS PLAT APPROVED BY THE CARBON COUNTY COMMISSIONERS ON THIS 6th DAY OF *March*, 1977.

CHAIRMAN *Richard Shive*

**CERTIFICATE OF ANNEXATION**

THIS PLAT SHOWS THE BOUNDARIES OF THE TRACT ADDED TO THE CITY OF RAWLINS, COUNTY OF CARBON, STATE OF WYOMING DATED THIS 27 DAY OF *January*, 1977.

MAYOR *Ernest E. Meyer*  
ATTEST: *James H. Bennett*  
CITY CLERK



**CITY ATTORNEYS CERTIFICATE**

THIS PLAT APPROVED BY THE CITY ATTORNEY THIS 27 DAY OF *January*, 1977.

CITY ATTORNEY *Donald J. Johnson*