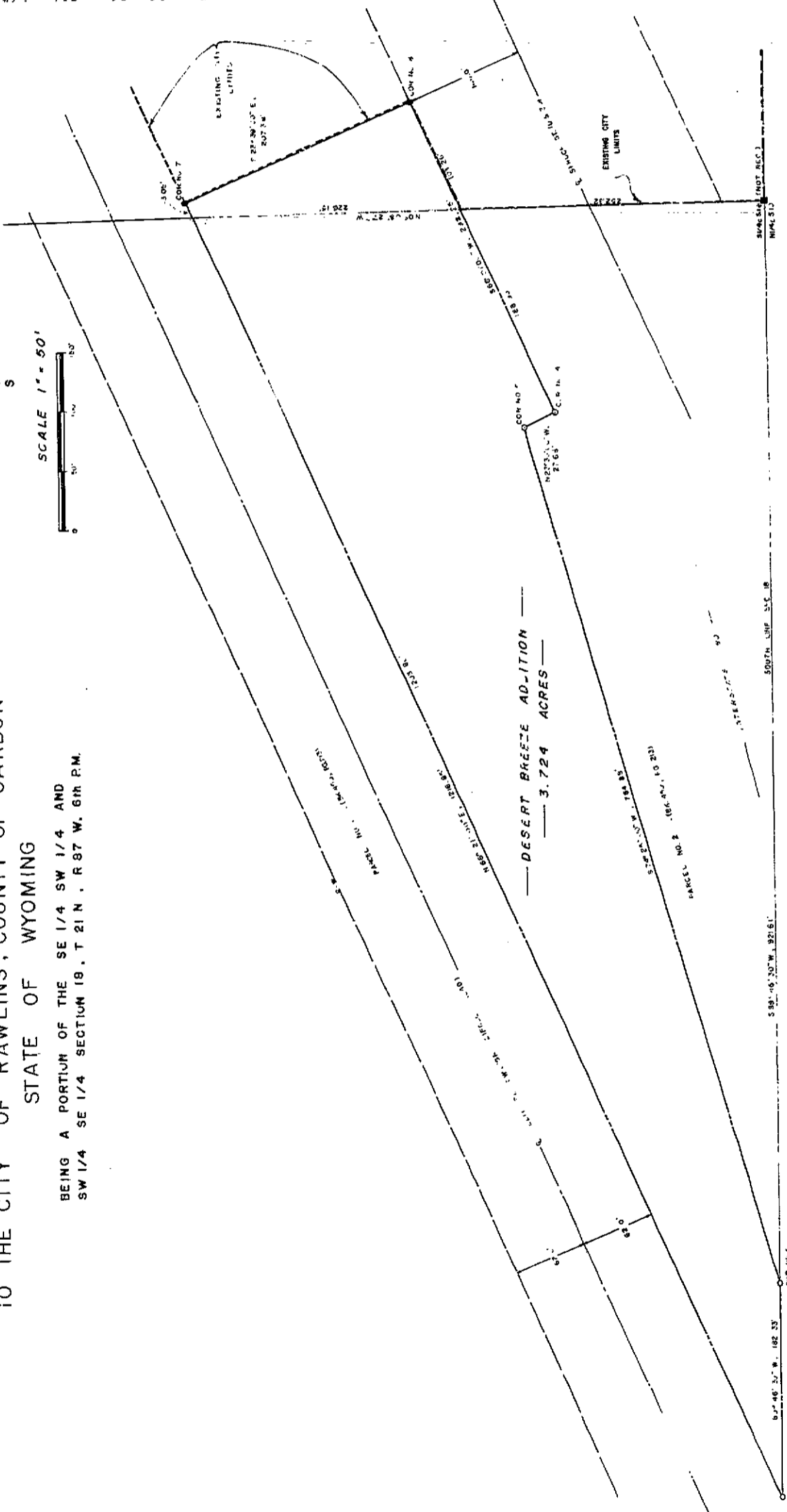


ANNEXATION PLAT
DESERT BREEZE ADDITION
 TO THE CITY OF RAWLINS, COUNTY OF CARBON
 STATE OF WYOMING
 BEING A PORTION OF THE SE 1/4 SW 1/4 AND
 SW 1/4 SE 1/4 SECTION 19, T 21 N., R 87 W. 6th P.M.



SCALE 1" = 50'



COUNTY COMMISSIONERS CERTIFICATE
 THIS PLAT APPROVED THIS _____ DAY OF _____ 1978
 BY THE COUNTY COMMISSIONERS.
 CHAIRMAN - _____

CERTIFICATE OF ANNEXATION
 THIS PLAT SHOWS THE BOUNDARIES OF THE TRACT ADDED TO THE CITY OF
 RAWLINS, COUNTY OF CARBON, STATE OF WYOMING DATED THIS 6th DAY
 OF FEBRUARY, 1978.
 MAYOR - *Edward G. M... ..*
 ATTEST - *Richard M.*
 CITY CLERK

CITY ATTORNEYS CERTIFICATE
 THIS PLAT APPROVED BY THE CITY ATTORNEY THIS 17th
 DAY OF FEBRUARY, 1978.
 CITY ATTORNEY - *Richard M.*

LEGEND & NOTES
 BEARINGS ARE REFERRED TO THE SOUTH LINE
 OF SECTION 18 - SB 1/4 - 30' W
 O WYO. HIGHWAY CONC. PLACEMENT
 O BRASS CAT
 ● 5/8\"

CITY ENGINEERS CERTIFICATE
 THIS PLAT APPROVED BY THE CITY ENGINEER THIS 2nd DAY
 OF FEBRUARY, 1978.
 CITY ENGINEER - *James H.*

RAWLINS PLANNING COMMISSION CERTIFICATE
 THIS PLAT APPROVED BY THE RAWLINS PLANNING COMMISSION THIS 22nd DAY
 OF FEBRUARY, 1978.
 CHAIRMAN - *Gregg A.*

SURVEYORS CERTIFICATE
 JAMES M. SCOTT, JR. HEREBY CERTIFY THAT THIS PLAT WAS MADE FROM
 NOTES TAKEN ON A SURVEY MADE BY ME AND THAT IT CORRECTLY
 REPRESENTS THE TRACT AS SHOWN.
 WYO. REG. NO. 581-I.S. - *James M. Scott, Jr.*

RECORDERS CERTIFICATE
 THIS PLAT WAS FILED IN THE OFFICE OF THE CLERK OF THE DISTRICT COURT
 OF THE COUNTY OF CARBON, STATE OF WYOMING, INSTRUMENT NO. _____
 ON _____ DAY OF _____ 1978.
 COUNTY CLERK - *Richard M.*

LEGAL DESCRIPTION

A TRACT OF LAND LOCATED IN THE SE 1/4 SW 1/4 AND SW 1/4 SE 1/4 SEC. 19, T. 21 N., R. 87 W. 6th P.M., CARBON COUNTY, WYOMING. THE TRACT BEING COMPLETELY DESCRIBED AS FOLLOWS:
 BEGINNING AT COR. NO. 1, A CONCRETE MONUMENT MARKING THE POINT OF INTERSECTION OF THE SOUTH LINE OF THE SAID SEC. 19 & A POINT THAT BEARS BEARING S 89° 46' 30\"/>

