

FINAL PLAT

OF THE REPLAT MOBILE HOME
 OF THE FORT STEELE CORPORATION SUBDIVISION
 IN THE COUNTY OF CARBON, STATE OF WYOMING
 BEING A PORTION OF LOT 1, SEC. 26, T.21N. R.85W. 6PPM.

20.034 ACRES ZONING RD 6000
~~74~~ LOTS
 STREETS, PLAZAS & OPEN 10.510 ACRES
~~10.358~~ ACRES
 EVAPORATION POND 8.630 ACRES
~~8.494~~ ACRES
 0.894 ACRES

MINIMUM LOT SIZE: 6000 SQ.FT.



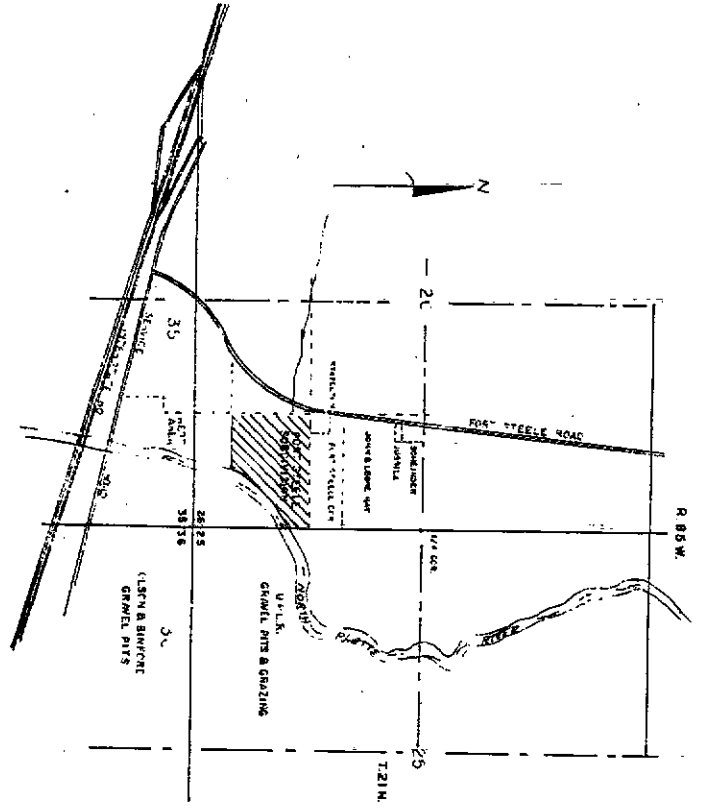
COUNTY COMMISSIONERS' CERTIFICATE

THIS PLAT APPROVED BY THE BOARD OF COUNTY COMMISSIONERS OF CARBON COUNTY, WYOMING, THIS 5th DAY OF May, A.D. 1982, FOR FILING WITH THE CLERK AND RECORDER OF CARBON COUNTY AND FOR CONVEYANCE TO THE COUNTY OF THE PUBLIC DEDICATIONS SHOWN HEREON, SUBJECT TO THE PROVISION THAT APPROVAL IN NO WAY OBLIGATES CARBON COUNTY FOR FINANCING OR CONSTRUCTION OF IMPROVEMENTS ON LANDS, STREETS OR EASEMENTS DEDICATED TO THE PUBLIC EXCEPT AS SPECIFICALLY AGREED TO BY THE BOARD OF COMMISSIONERS AND FURTHER THAT SAID APPROVAL SHALL IN NO WAY OBLIGATE CARBON COUNTY FOR MAINTENANCE OF STREETS WHICH ARE NOT DEDICATED TO THE PUBLIC NOR UNTIL ALL IMPROVEMENTS SHALL HAVE BEEN COMPLETED TO THE SATISFACTION OF THE BOARD OF COUNTY COMMISSIONERS AND ACCEPTED BY PROPER RESOLUTION.

DATED THIS 5th DAY OF May, A.D. 1982.
Robert Lewis
 CHAIRMAN

ATTEST: *Mary J. Bousfield*
 CARBON COUNTY CLERK

CERTIFICATE OF COUNTY ENGINEER
 APPROVED THIS 5th DAY OF May, A.D. 1982 BY THE COUNTY ENGINEER OF CARBON COUNTY, WYOMING:
B. Frank Smith
 COUNTY ENGINEER



TITLE CERTIFICATE

DOES HEREBY CERTIFY THAT I HAVE EXAMINED THE TITLE TO ALL LANDS SHOWN UPON THIS PLAT AND THAT TITLE TO SUCH LANDS IS VESTED AND FREE AND CLEAR OF ALL LIENS, TAXES AND ENCUMBRANCES OF WHATEVER NATURE AS FOLLOWS:
Mary J. Bousfield
 May 2, 1979 in Book 572 Page 70
 DATED THIS 5th DAY OF May, A.D. 1982.

SURVEYORS CERTIFICATE

I, BOB ROY LOGAN, DO HEREBY CERTIFY THAT I AM A REGISTERED LAND SURVEYOR LICENSED UNDER THE LAWS OF THE STATE OF WYOMING, THAT THIS PLAT IS A TRUE, CORRECT AND COMPLETE PLAT OF THE FORT STEELE CORPORATION SUBDIVISION AS LAID OUT, PLATTED, DEDICATED, AND SHOWN HEREON, THAT SUCH PLAT WAS MADE FROM AN ACCURATE SURVEY MADE BY ME AND BY OTHERS FOR WHOM I STAND RESPONSIBLE AND CORRECTLY SHOWS THE LOCATION AND DIMENSIONS OF THE LOTS, EASEMENTS AND STREETS OF SAID SUBDIVISION AS THE SAME ARE STAKED UPON THE GROUND IN COMPLIANCE WITH THE CARBON COUNTY REGULATIONS GOVERNING THE SUBDIVISION OF LAND.

IN WITNESS WHEREOF I HAVE SET MY HAND AND SEAL THIS 18th DAY OF March, 1982.
Bob Roy Logan
 REGISTERED LAND SURVEYOR
 WHO RECEIVED \$504 FEES
 AND A STATE NO. 141

PLANNING COMMISSION CERTIFICATE

THIS PLAT APPROVED BY THE CARBON COUNTY PLANNING COMMISSION THIS 5th DAY OF May, A.D. 1982.
Mary J. Bousfield
 CHAIRMAN

CERTIFICATION OF DEDICATION AND OWNERSHIP

KNOW ALL MEN BY THESE PRESENTS THAT THE FORT STEELE CORPORATION OF BOX 125 RAWLINS, WYOMING, BEING SOLE OWNERS IN FEE SIMPLE OF LOT 1, SECTION 26, T.21N. R.85W. 6PPM AND FURTHER DESCRIBED AS FOLLOWS, BEGINNING AT THE SOUTH W/4 CORNER OF SECTIONS 25 AND 26; THENCE N. 88° 29' W. 1332.27' TO THE WEST LINE OF SAID LOT 1; THENCE S. 01° 12' 18" W. ALONG SAID WEST LINE 876.22'; THENCE S. 87° 09' E. 601.14'; THENCE MEANDERING THE WESTERLY BANK OF THE NORTH PLATTE RIVER, N. 30° 45' E. 300.0'; N. 33° 28' E. 197.0'; N. 64° 57' E. 210.0'; N. 67° 44' E. 225.0'; AND N. 49° 47' 25" E. 105.0' TO A POINT ON EAST LINE OF SEC. 26; THENCE N. 01° 00' E. ALONG SAID SECTION LINE 27.00' TO THE POINT OF BEGINNING, AND CONTAINING 20.034 ACRES MORE OR LESS; HAVE BY THESE PRESENTS LAID OUT PLATTED AND SUB-DIVIDED THE SAME INTO LOTS AND BLOCKS AS SHOWN HEREON, WITH THE FREE CONSENT AND IN ACCORDANCE WITH THE DESIRES OF THE UNDER-FREE OWNERS AND PROPRIETORS WHO HAVE DESIGNATED THE SAME AS THE FORT STEELE CORPORATION, AND DO HEREBY GRANT TO THE COUNTY OF CARBON, WYOMING, FOR PUBLIC USE THE STREETS SHOWN HEREON INCLUDING AVENUES, DRIVES, COURTS, PLACES AND ALLEYS; THE PUBLIC LANDS SHOWN HEREON FOR THEIR INDICATED PUBLIC USE; AND THE UTILITY AND DRAINAGE EASEMENTS SHOWN HEREON FOR UTILITY AND DRAINAGE PURPOSES ONLY; AND DO FURTHER STATE THAT THIS SUBDIVISION SHALL BE SUBJECT TO THE PROTECTIVE GOVERNANT'S FILED AND RECORDED FOR THIS SUBDIVISION IN THE OFFICE OF THE CLERK AND RECORDER OF CARBON COUNTY, WYOMING, AS DOCUMENT NO. 696574 - BK 777 - PG 812.

EXECUTED THIS 5th DAY OF May, A.D. 1982.
 OWNERS FORT STEELE CORPORATION
Mary J. Bousfield
 PRESIDENT
Robert Lewis
 VICE PRESIDENT
Q. Miller
 SECRETARY

STATE OF WYOMING SS
 COUNTY OF CARBON
 THE FOREGOING DEDICATION WAS ACKNOWLEDGED BEFORE ME ON THIS 5th DAY OF May, A.D. 1982, BY
Mary J. Bousfield
Robert Lewis
Q. Miller

WITNESS MY HAND AND OFFICIAL SEAL
 MY COMMISSION EXPIRES *September 4, 1987*
 NOTARY PUBLIC *Don A. Smith*

CLERK OR RECORDERS CERTIFICATE

THIS PLAT WAS FILED FOR RECORD IN THE OFFICE OF THE CLERK AND RECORDER AT 8:00 O'CLOCK A.M. May 7th, 1982, AND IS DULY RECORDED AS DOCUMENT NO. 696573
 IN BOOK 6008-PAGES PAGE NO. 51
Mary J. Bousfield
 CLERK AND RECORDER
 BY *_____* DEPUTY

R & E ENGINEERING RAWLINS, WYOMING
 PROJECT NO. 183 M/RCH 1982
 SHEET NO. 1 OF 2

