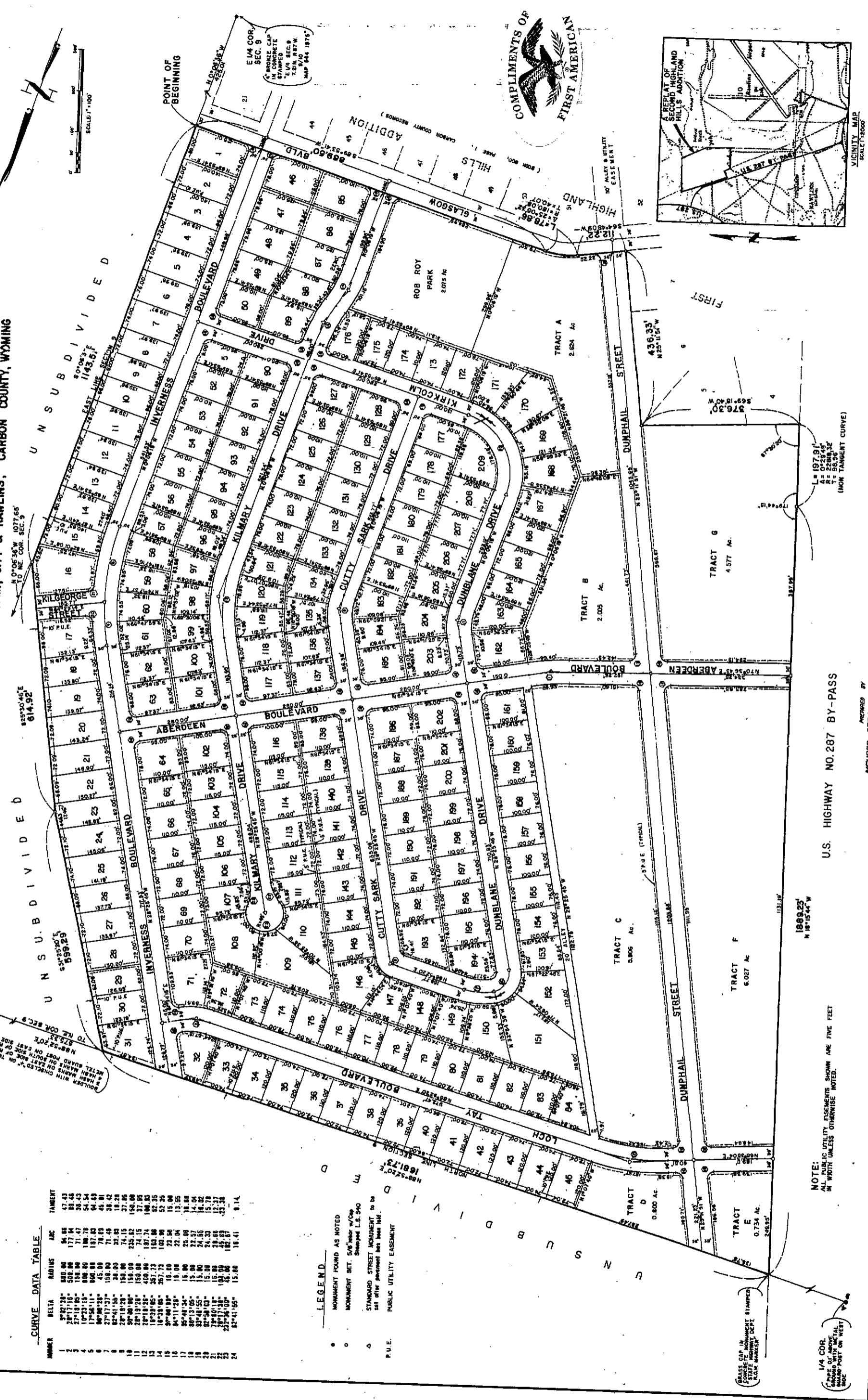


# A REPLAT OF SECOND HIGHLAND HILLS SUBDIVISION

A SUBDIVISION LOCATED IN THE NE 1/4 OF SEC. 9, T.21N, R.87W, 6TH P.M., CITY OF RAWLINS, CARBON COUNTY, WYOMING

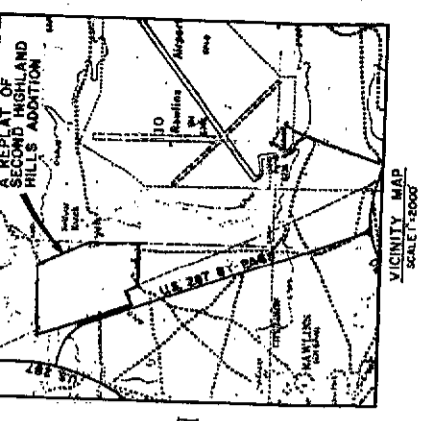
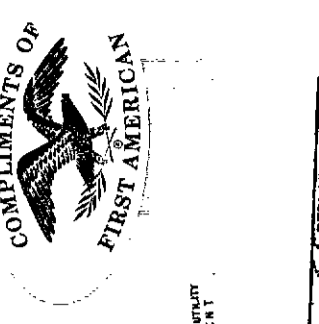


**CURVE DATA TABLE**

NUMBER	BELTA	RADIUS	ARC	TANGENT
1	27°17'37"	880.00	94.88	47.43
2	27°17'37"	880.00	94.88	47.43
3	27°17'37"	880.00	94.88	47.43
4	27°17'37"	880.00	94.88	47.43
5	27°17'37"	880.00	94.88	47.43
6	27°17'37"	880.00	94.88	47.43
7	27°17'37"	880.00	94.88	47.43
8	27°17'37"	880.00	94.88	47.43
9	27°17'37"	880.00	94.88	47.43
10	27°17'37"	880.00	94.88	47.43
11	27°17'37"	880.00	94.88	47.43
12	27°17'37"	880.00	94.88	47.43
13	27°17'37"	880.00	94.88	47.43
14	27°17'37"	880.00	94.88	47.43
15	27°17'37"	880.00	94.88	47.43
16	27°17'37"	880.00	94.88	47.43
17	27°17'37"	880.00	94.88	47.43
18	27°17'37"	880.00	94.88	47.43
19	27°17'37"	880.00	94.88	47.43
20	27°17'37"	880.00	94.88	47.43
21	27°17'37"	880.00	94.88	47.43
22	27°17'37"	880.00	94.88	47.43
23	27°17'37"	880.00	94.88	47.43
24	27°17'37"	880.00	94.88	47.43

**LEGEND**

- MONUMENT FOUND AS NOTED
- MONUMENT SET, 5/8" IRON W/ COP SHEATHED L.S. 5/40
- STANDARD STREET MONUMENT TO BE SET AT OTHER ENDMENT LINE WITH 1/4"
- PUBLIC UTILITY EASEMENT



NOTE: ALL PUBLIC UTILITY EASEMENTS SHOWN ARE FIVE FEET IN WIDTH UNLESS OTHERWISE NOTED.

U.S. HIGHWAY NO. 287 BY-PASS

1899.25' N 19° 15' 44" W

PREPARED BY  
**MEYER SCRAPNEY & MEYER INC.**  
CONSULTING ENGINEERS - P.O. Box 219  
Rawlins Wyoming 82501

