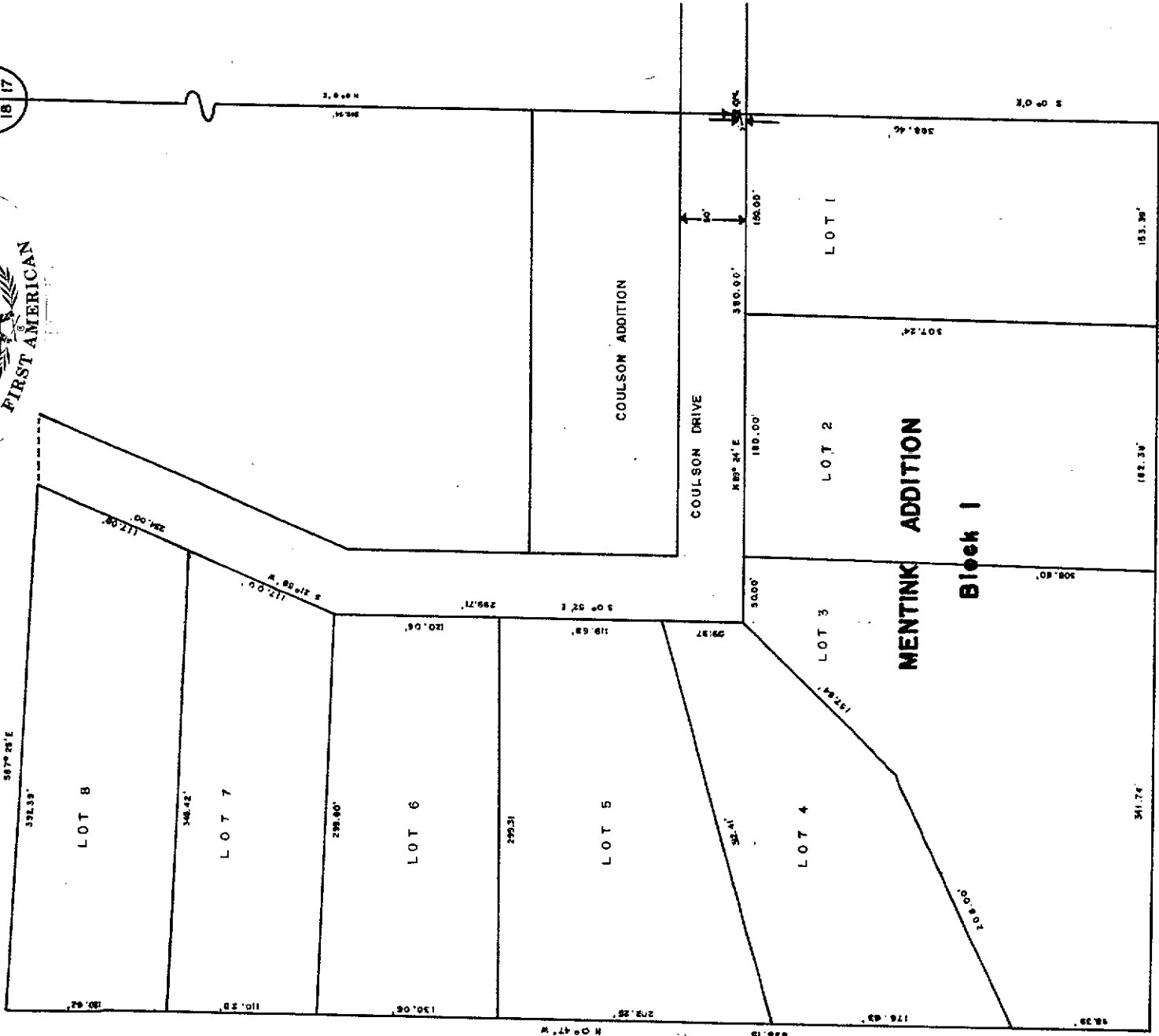


MENTINK ADDITION TO THE CITY OF RAWLINS, WYO.

IN

SE 1/4 NE 1/4 NE 1/4 S 16 T 21 N R 6 W

T 21 N R 6 W GRM.



Block of Wyoming... On this day 25... My notarial commission expires August 22, 1922... Notary Public

DEDICATION

Know all men by these presents: That Ralph Mentink and Wilma Mentink, husband and wife, each in their own right, the undersigned of Rawlins, Carbon County, Wyoming, the sole owners and proprietors of the real estate shown on the map and plat hereunto fully described, have laid out and plotted and by these presents do lay out and plat the said real estate under the name of Mentink Addition to the City of Rawlins in the County of Carbon, State of Wyoming, being lots 1-8 both inclusive in Block 1, and the streets and alleys, included in the description, and they do hereby dedicate in perpetuity to the use of the public all streets and alleys shown on this plat.

The undersigned, Ralph Mentink and Wilma Mentink, certify and further declare that the foregoing addition is described as follows: Beginning at a concrete monument on the East Section line of S 16 T 21 N R 6 W GRM. which bears S 0° 0' E a distance of 143.34 feet more or less to the NE corner of lot 1. Thence, through the lot a distance of 1.5' to the point of beginning. Thence S 0° 0' E along the section line a distance of 309.42 feet more or less to the SE corner of lot 1. Thence, through the lot a distance of 877.01 feet more or less to the SW corner of lot 3. Thence N 0° 47' W a distance of 828.13 feet more or less to the NW corner of lot 8. Thence, through the lot a distance of 392.39 feet more or less to the NE corner of lot 8. Thence N 89° 21' E a distance of 810.00 feet more or less to the NW corner of lot 8. Thence S 2° 0' W a distance of 230.00 feet more or less to the NW corner of lot 2. Thence S 0° 0' E along the west line of Tract 3 a distance of 143.34 feet more or less to the NW corner of lot 2. Thence N 89° 21' E a distance of 330.00 feet more or less to the west end of beginning.

In witness whereof, we said Ralph Mentink and Wilma Mentink have herein set their hands and seal this 25 day of July, 1922.

Ralph Mentink
Wilma Mentink

Notary Public
On this 25 day of July, 1922, before me personally appeared Ralph Mentink and Wilma Mentink to me known to be the persons claimed in and who executed the foregoing instrument and acknowledged that they executed the same as a free act and deed. Witness my hand and notarial seal this 25 day of July, 1922.

My notarial commission expires August 22, 1922
Jesse T. Ferrell
Notary Public

In witness whereof, the City of Rawlins, a municipal corporation, has presented to a session of its Council members duly selected, duly and voluntarily consented to the filing of this declaration and has caused that consent to be recorded in its name by Samuel W. Rogers its Mayor, its seal affixed thereto and attested by Charles Thomas, its City Clerk.

Edna M. Lawrence
City Clerk
City of Rawlins a municipal corporation
Derivival Rogers
Mayor

The foregoing plat of Mentink Addition to the City of Rawlins, Carbon County, Wyoming, including land adjacent to the said city is presented to the provisions of Section 20-102 Wyoming Compiled Statutes of 1905.

Attest
Charles Thomas
Chairman
County Clerk

State of Wyoming
County of Carbon
L. R. & Co. Engineers, the duly elected, qualified and acting County Clerk and Clerk of the County of Carbon, Wyoming, do hereby certify that the map and plat were filed in my office in Rawlins on the 25 day of July, 1922, and duly recorded in book number 570 at page 19, as instrument number 51441.