

DEDICATION

KNOW ALL MEN BY THESE PRESENTS: That George B. Storer of Saratoga, Wyoming, in his own right, the owner and proprietor of the real estate shown upon this plat and hereinafter fully described, has laid out and platted and by these presents does lay out and plat the said real estate in the name of Block Two, Second Addition to Old Baldy Village in Carbon County, State of Wyoming, being Lots 1 through 4 inclusive in Block Two and the Streets and roads as shown herein are hereby dedicated to the perpetual use of the abutting property owners and assigns the reservation of said streets and roads, as shown and described, does further dedicate a right-of-way over and across a strip of land twenty (20) feet in width along the front of said lots as indicated upon this plat as an easement for the purposes of preparing and maintaining a system of electric wires telephone lines, water pipes, sewers and other public utilities.

THE UNDERSIGNED, does certify and further declare that the addition is described as follows: FOR ALL THAT PORTION OF Section 18, T.17N., R.83W., and Section 19, T.17N., R.84W., 6th P.M., Carbon County, Wyoming, within the following metes and bounds description: Beginning at a point which is the most northerly corner of Block Two as shown herein; said point bearing N. 64° 40' 00" W. a distance of 134.80 feet from the S.E. corner of the S.W. 1/4 of the N.M. 1/4 of said Section 18, T.17N., R.83W.; thence S. 89° 40' 00" E. a distance of 400.00 feet to a point which is the most easterly corner of Block Two as shown upon this plat; thence S. 43° 40' 00" W. a distance of 40.00 feet to a point monumented by a 1 1/2" aluminum cap set on a 1/2" re-bar; thence continuing S 43° 40' 00" W. a distance of 53.00 feet to a point monumented by a 1 1/2" aluminum cap set on a 1/2" re-bar; thence N. 53° 01' 50" W. along said H-W line a distance of 320.89 feet; thence N. 50° 02' 30" W. along said H-W line a distance of 230.00 feet; thence N. 39° 40' 30" W. along said H-W line a distance of 242.00 feet; thence N. 21° 45' 30" W. along said H-W line a distance of 230.00 feet; thence N. 62° 14' 30" E. a distance of 27.00 feet to a point monumented by a 1 1/2" aluminum cap set on a 1/2" re-bar; thence continuing N. 62° 14' 30" E. a distance of 81.00 feet to a point monumented by a 1 1/2" aluminum cap set on a 1/2" re-bar; thence continuing N. 62° 14' 30" E. a distance of 40.00 feet to the original point of beginning. IN WITNESS WHEREOF the said George B. Storer has hereunto set his hand this 22nd day of October, 1924.

STATE OF WYOMING } ss. COUNTY OF CARBON } ss. On this 22nd day of October, 1924, before me personally appeared George B. Storer, to me known to be the person described in and who executed the foregoing instrument and acknowledged that he executed the same as his free act and deed given under my hand and notarial seal this 22nd day of October, 1924. My Notarial Commission Expires: June 30, 1928.

George B. Storer

STATE OF WYOMING } ss. COUNTY OF CARBON } ss. On this 22nd day of October, 1924, before me personally appeared George B. Storer, to me known to be the person described in and who executed the foregoing instrument and acknowledged that he executed the same as his free act and deed given under my hand and notarial seal this 22nd day of October, 1924. My Notarial Commission Expires: June 30, 1928.

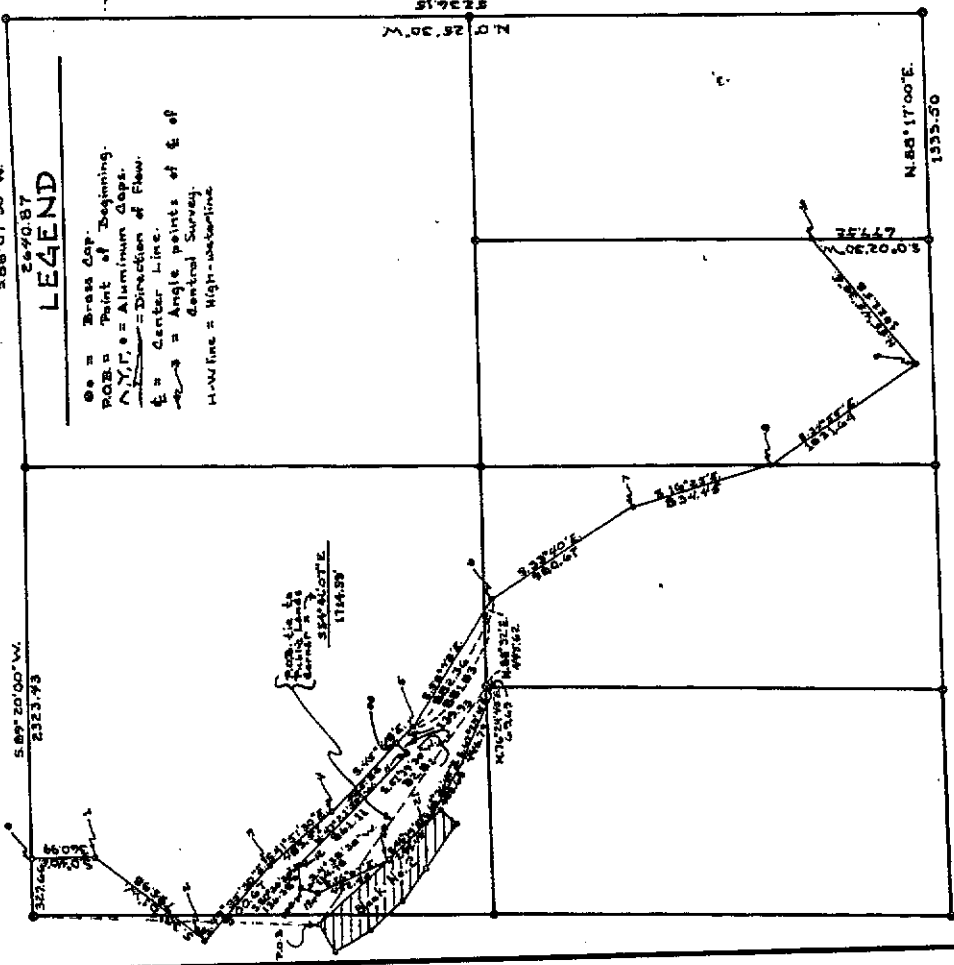
Allen W. Mace, Notary Public

ALLEN W. MACE LICENSED LAND SURVEYOR NO. 315 - 1915 2nd St. RAWLINS, WYOMING Surveyed by Allen W. Mace, Notary Public Checked by Allen W. Mace, Notary Public PROJECT No. 2064-544



SECOND ADDITION BLOCK TWO Section 18, T.17N., R.83W. Section 19, T.17N., R.84W. Sixth Principal Meridian Carbon County, Wyoming Scale 1" = 100'

Scale 1" = 100'



SECTION 18, T.17N., R.83W. Scale 1" = 500'

SURVEYOR'S CERTIFICATE I, Allen W. Mace, of Rawlins, Wyoming, do hereby certify that I accurately surveyed the Second Addition to Old Baldy Village, Carbon County, Wyoming, and that the addition shown upon this map accurately represents the results of that survey and that said addition is accurately monumented.

WYOMING Registration Number 315 Subscribed and sworn before me this 22nd day of October, 1924. My Commission Expires June 30, 1928. Notary Public

RECORDER'S CERTIFICATE STATE OF WYOMING ss. COUNTY OF CARBON ss. I, E.A. Engstrom, the duly elected, qualified and acting county clerk and ex-officio Recorder of Carbon County, Wyoming, this 23rd day of October, 1924, was filed in my office in Rawlins, Wyoming, this 23rd day of October, 1924, and duly recorded in Book 523, Page 1, at 2:56 P.M. as Instrument No. 471754.

BEARING STATEMENT All bearings shown upon this plat refer to true North and were determined by solar observation. Additional relative bearing information may be obtained from the solar observation maps. I.A. Map made by Robert Jack Smith & Assoc., Rawlins, Wyoming, dated Sept. 19, 1920, entitled "George B. Storer Ranch Survey", Map file No. 7-35. E.A. Map made by Allen W. Mace, entitled First Add. Old Baldy Village, recorded in Carbon Co. Clerk's Office.

Vicinity Map Primary Control

LEGEND Brass Cap Point of Beginning Aluminum Caps Direction of Flow Center Line Angle points of E of Central Survey High-waterline

Scale 1" = 100'

Scale 1" = 500'

Scale 1" = 100'

Scale 1" = 500'

Scale 1" = 100'

Scale 1" = 500'

Scale 1" = 100'

Scale 1" = 500'

Scale 1" = 100'

Scale 1" = 500'

Scale 1" = 100'

Scale 1" = 500'

Scale 1" = 100'

Scale 1" = 500'