

**SURVEYOR'S CERTIFICATE**  
 I, Allen W. Mace, of Carbon County, Wyoming, do hereby certify that I accurately surveyed the Third Addition to Old Baldy Village, Carbon County, Wyoming and that the addition shown upon this map accurately represents the monuments of that survey and that said addition is accurately surveyed.

Wyoming Registration Number 3715  
 Subscribed and sworn before me this 26th day of October, 1918  
 My Commission Expires June 26, 1922  
 Notary Public

**RECORDER'S CERTIFICATE**  
 STATE OF WYOMING  
 COUNTY OF CARBON  
 I, E.A. Engstrom, the duly elected and acting county clerk and Ex-officio Register of deeds of Carbon County, Wyoming, do hereby certify that this plat was filed in my office in Carbon County, Wyoming, this 26th day of October, 1918, and duly recorded in Book 525, Page 235, as Instrument No. 2727.

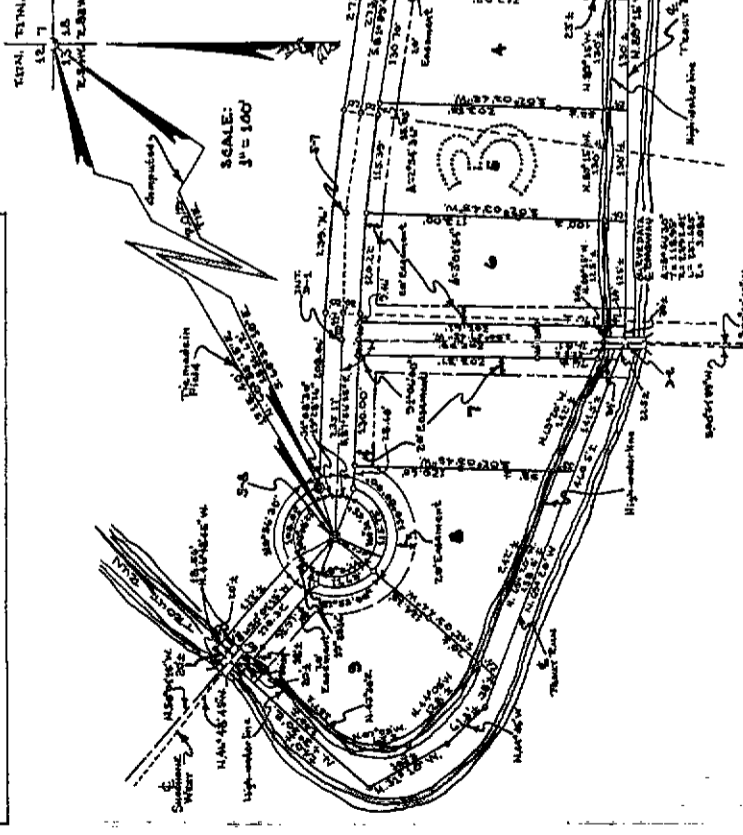
State of Carbon County, Wyoming

**BEARING STATEMENT**  
 All bearings shown upon this plat refer to true North and were determined by solar observation. Additional relative bearing information may be obtained from the two following maps:  
 1. A Map made by Robert Jack Smith & Assoc., Rawlins, Wyoming, dated Sept. 19, 1910, entitled "George B. Storer Ranch Survey", Map File No. 7-35.  
 2. A Map made by Allen W. Mace, entitled "First Add. Old Baldy Village", recorded in Carbon Co. Clerk's Office.

**METHODS, EQUIPMENT, CONDITIONS & ACCURACY CONCERNING FIELD SURVEY**  
 The survey herein shown was conducted during mild to cold weather conditions. Temperatures ranged between 50°F and 50°F, a correction of 0.00005 per degree per foot from 67°F was employed during all chaining done with a 100' steel calibrated chain. A Quikky Mountain Transit (Q.M.) was employed for all angular measurement. The error of closure upon completion of the field work was less than 1 foot in 17,000 feet.

**LEGEND**  
 O = Aluminum Cap.  
 ⊙ = Section Tie marker.  
 Δ = Brass caps.  
 E = Centerline.  
 L = Length of Flag.  
 T = Transit.  
 H-W line = High-water line.

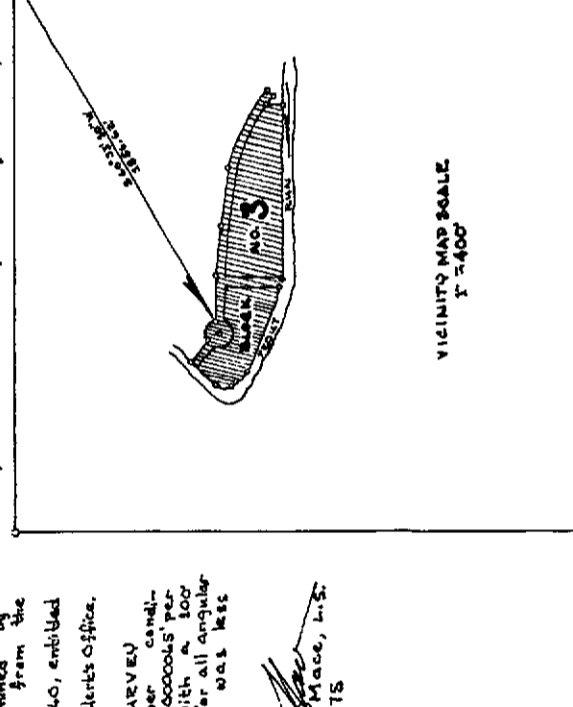
Allen W. Mace, L.S.  
 Wyo. Reg. No. 3715



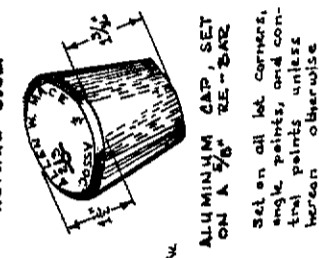
COMPLIMENTS OF  
**Old Baldy Village**  
 FIRST AMERICAN

**THIRD ADDITION  
 BLOCK THREE**  
 SITUATED WITHIN THE NE 1/4  
 OF SECTION 13, T.17N. R.34W.  
 6th PRINCIPAL MERIDIAN,  
 CARBON COUNTY, WYOMING.

VICINITY MAP  
 NE 1/4 OF SECTION 13, T.17N., R.34W., 6th RM.



**LOT CORNER  
 MONUMENT**  
 ACTUAL SIZE.



Set on all lot corners, single points, and control points, unless herein otherwise specified.

DEDICATION SHEET 1 OF 1 SHEET

KNOW ALL MEN TO THESE PRESENTS: That George B. Storer of Carbon County, Wyoming, in his own right, the owner and proprietor of the real estate shown upon this plat and hereinafter fully described, has laid out and platted and by these presents does lay out and plat the said real estate under the name of Block Three, Third Addition to Old Baldy Village in Carbon County, State of Wyoming, being Lots 1 through 5 inclusive in Block Three and the streets and roads as shown hereon are hereby dedicated to the perpetual use of the abutting property owners with the dedicatory reserving for himself, his heirs, successors and assigns the reversions of said streets and roads when abandoned or discontinued for public use or by operation of law. The undersigned does further dedicate a right-of-way over and across a strip of land twenty (20) feet in width along the front of said lots as indicated upon this plat, as an easement for the purposes of preparing and maintaining a system of electric wires, telephones, water pipes, sewers and other public utilities.

THE UNDERSIGNED, does certify and further declare that the foregoing addition is described as follows:  
 ALL THAT PORTION OF: the NE 1/4 of Section 13, T.17N., R.34W., 6th RM., Carbon County, Wyoming, within the following metes and bounds description: beginning at a point which bears S. 60° 25' 10" W. a distance of 1894.62 feet from the N.E. corner of said Section 13; of thence S. 81° 50' 15" E. a distance of 208.06 feet to the point of beginning of a circular curve to the right, the radius of which is 232.01 feet;  
 thence continuing along said curve through a central angle of 09° 30' a distance of 239.76 feet to the point of ending of said curve;  
 thence S. 81° 50' 15" E. a distance of 273.97 feet to the point of beginning of a circular curve to the right the radius of which is 627.27 feet;  
 thence continuing along said curve through a central angle of 38° 40' 15" a distance of 409.09 feet to the point of ending of said curve;  
 thence S. 43° 40' 30" W. a distance of 4000 feet to the point of beginning of a circular curve to the left the radius of which is 637.27 feet;  
 thence continuing along said curve through a central angle of 38° 40' 15" a distance of 409.09 feet to the point of ending of said curve through a central angle of 09° 30' a distance of 239.76 feet to a point on the line S. 08° 03' 45" W. a distance of 74.91 feet to a point monumented by a 1 1/2" aluminum cap set on a 3/8" diameter bar to the high-water line of Trout Run as shown hereon, formerly known as Goodwell Slough;  
 thence N. 89° 15' W. along said H-W line a distance of 835.84 feet thence N. 45° 45' W. along said H-W line a distance of 406.81 feet; thence N. 07° 00' W. along said H-W line a distance of 128.3 feet; thence N. 49° 30' E. along said H-W line a distance of 157.3 feet; thence S. 90° 01' 15" E. a distance of 112.3 feet to the point of intersection with a circular arc the radius of which is 4000 feet, said point of intersection also being a point of tangency for a line bearing N. 59° 27' 04" E.; thence continuing along said arc through a central angle of 102° 05' 27" a distance of 108.01 feet to the point of beginning.

IN WITNESS WHEREOF, the said George B. Storer has hereunto set his hand this 26th day of October, 1918.

George B. Storer

STATE OF WYOMING  
 COUNTY OF CARBON  
 On this 27th day of October, 1918, before me personally appeared George B. Storer, to me known to be the person described in and who executed the foregoing instrument and acknowledged that he executed the same as his free act and deed given under my hand and notarial seal this 27th day of October, 1918.  
 My Notarial Commission Expires: June 26, 1922

Notary Public

ALLEN W. MACE  
 LICENSED LAND SURVEYOR  
 NO. 308 113 1218 11th ST  
 RAWLINS, WYOMING  
 Surveyed by: [Signature]  
 Platted by: [Signature]  
 Checked by: [Signature]  
 PROJECT NO.: 5061-1-1918