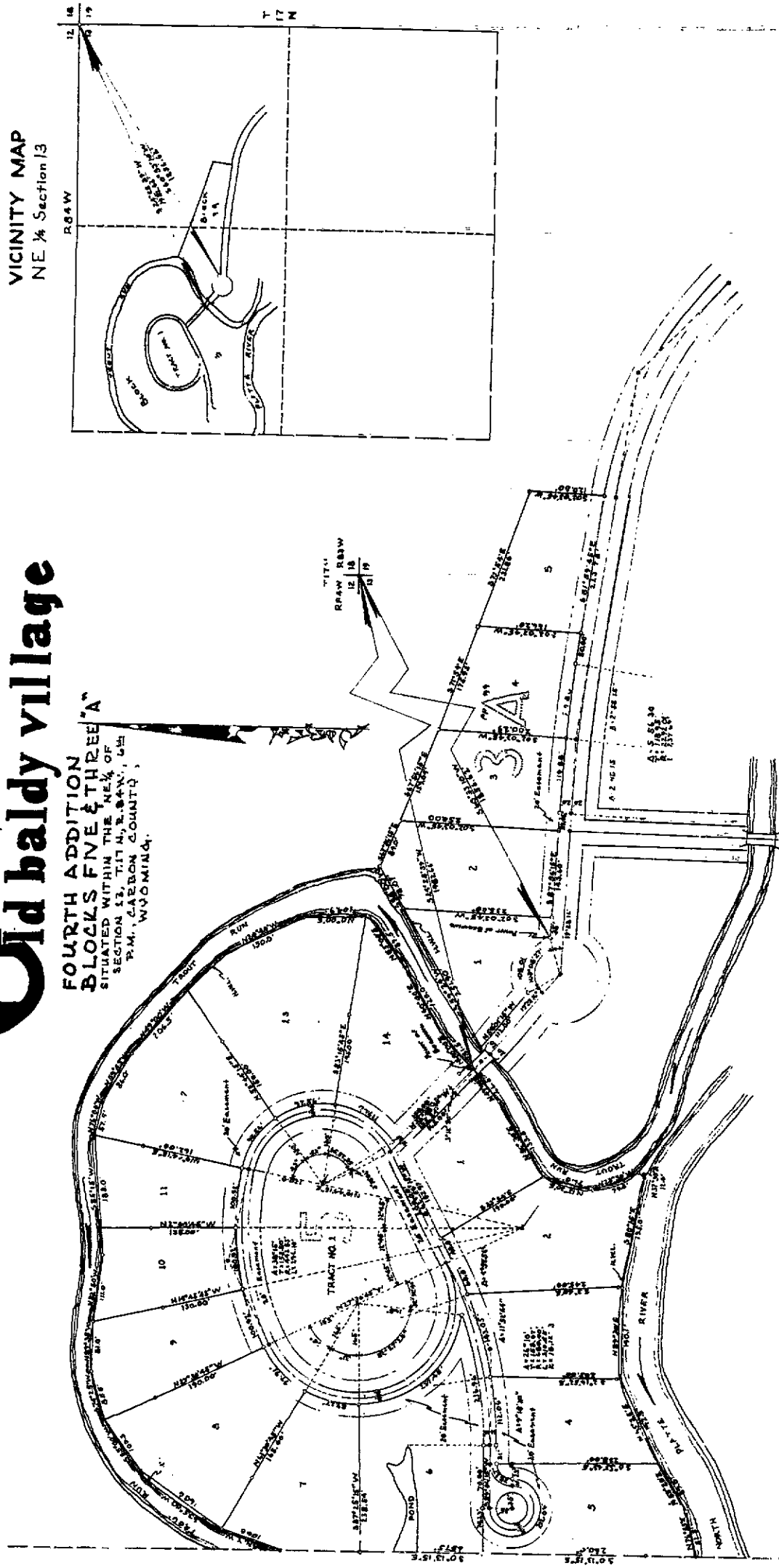


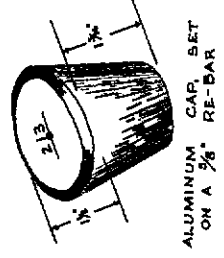


# Old baldy village

**FOURTH ADDITION  
BLOCKS FIVE & THREE "A"**  
SITUATED WITHIN THE NE 1/4 OF  
SECTION 13, T17 N., R34 W., 4th  
P.M., CARBON COUNTY, W.  
MONTANA.



**LOT CORNER  
MONUMENT**  
ACTUAL SIZE



**LEGEND**

ALUMINUM CAP	LOT LINE
CONTROL POINT	SEMI-TANGENT & RADIAL LINES
DELTA = CENTRAL ANGLE	CENTRAL LINE & ROADWAY
T = TANGENT DISTANCE	UTILITY EASEMENT LINE
R = RADIUS	DIRECTION OF FLOW
L = LENGTH OF CURVATURE	HWY.
E = EXTERNAL DISTANCE	TIMBER TRUSS BRIDGE

**ALLEN W. MADE**  
LICENSED LAND SURVEYOR  
RD. BOX 113 - 1215 4TH ST.  
BAYLUMS, WYOMING  
Surveyed by: [Signature]  
Plotted by: [Signature]  
Checked by: [Signature]  
PROJECT No.: 2001-11-11



# Old Baldy Village

## FOURTH ADDITION BLOCKS THREE 'A' & FIVE

I, Allen W. Mace, of Saratoga, Wyoming, do hereby certify that I accurately surveyed the Fourth Addition to Old Baldy Village Carbon County, Wyoming and that the addition shown upon this map accurately represents the results of that survey and that said addition is accurately monumented.

Wyoming Registration Number 375

Subscribed and sworn before me this 23rd day of October, 1968

My Commission Expires June 26, 1972

### RECORDER'S CERTIFICATE

STATE OF WYOMING }  
COUNTY OF CARBON }  
I, R.A. Engstrom, the duly elected, qualified and acting County Clerk and Ex-Officio Registrar of said Carbon County, Wyoming, do hereby certify that this plat was filed in my office in Carbon County, Wyoming, this 23rd day of October, 1968, and duly recorded in Book 2307, Page 123, at 2:30 P.M. as Instrument No. 47755.

### BEARING STATEMENT

All bearings shown upon this plat refer to true North and were determined by solar observation. Additional relative bearing information may be obtained from the following maps:  
1. A map made by Robert Jack Smith & Assoc., Rawlins, Wyoming, dated Sept. 19, 1960, entitled "A Map made by Allen W. Mace, entitled 'First Add. Old Baldy Village', recorded in Carbon Co. Clerk's Office.

METHODS, EQUIPMENT, CONDITIONS, & ACCURACY CONCERNING FIELD SURVEY  
The survey herein shown was conducted during mild to cold weather conditions. Temperatures ranged between 20°F and 30°F, a correction of 0.000006 per degree per foot from L.P.E. was employed during all chaining done with a 100' steel calibrated chain. A Quiley Mountain Transit (C.S.M.) was employed for all angular measurement. The error of closure upon completion of the field work was less than 1 foot in 13,000 feet.

Allen W. Mace, L.S.  
Mace, L.S.

IN WITNESS WHEREOF, the said George B. Storer has hereunto set his hand this 23rd day of October, 1968.

*George B. Storer*

STATE OF WYOMING }  
COUNTY OF CARBON }  
On this 23rd day of October, 1968, before me personally appeared George B. Storer, to me known to be the person described in and who executed the foregoing instrument and acknowledged that he executed the same as his free act and deed and that he gave to me my hand and notarial seal this 23rd day of October, 1968.

My Notarial Commission Expires: June 26, 1972

*Allen W. Mace*  
NOTARY PUBLIC

### DEDICATION

KNOW ALL MEN BY THESE PRESENTS: That George B. Storer of Saratoga, Wyoming, in his own right, the owner and proprietor of the real estate shown upon this plat and hereinafter fully described, has laid out and platted and by these presents does lay out and plat the said real estate under the name of Blocks 3, 4, 5, Fourth Addition to Old Baldy Village in Carbon County, State of Wyoming, being lots 1 through 4 and 6 respectively and the streets and roads as shown hereon are hereby dedicated to the perpetual use of the abutting property owners with the dedicatory reserving for himself, his heirs, successors and assigns the reversions of said streets and roads, when abandoned or discontinued for public use or by operation of law. The undersigned does further dedicate a right-of-way over and across a strip of land twenty (20) feet in width along the front of said lots as indicated upon this plat, as an easement for the purpose of preparing and maintaining a system of electric wires, telephone wires, water pipes, sewers and other public utilities.

THE UNDERSIGNED, does certify and further declare that the foregoing addition is described as follows: (Block 3): ALL THAT PORTION OF: the N.E. 1/4 of Section 13, T.17N., R.84W., 6th TM., Carbon County, Wyoming, within the following metes and bounds description: Beginning at a point which bears S.27°25'25"W. a distance of 192.60' from the N.E. corner of said Section 13;

thence N.50°50'20"E. along the Highwater-line of Trout Run as shown hereon, formerly known as Dodwell Slough, a distance of 81.2' ;  
thence N.65°00'E. along said HWL a distance of 120.0' ;  
thence N.55°00'E. along said HWL a distance of 89.5' ;  
thence N.24°40'W. along said HWL a distance of 104.5' ;  
thence N.49°00'W. along said HWL a distance of 150.0' ;  
thence N.59°42'W. along said HWL a distance of 206.5' ;  
thence N.74°00'W. along said HWL a distance of 218.2' ;  
thence S.85°15'W. along said HWL a distance of 186.0' ;  
thence N.82°50'W. along said HWL a distance of 111.0' ;  
thence N.89°35'W. along said HWL a distance of 81.0' ;  
thence S.74°25'W. along said HWL a distance of 81.0' ;  
thence S.55°00'W. along said HWL a distance of 100.5' ;  
thence S.25°00'W. along said HWL a distance of 100.5' ;  
thence S.20°10'W. along said HWL a distance of 100.0' ;  
to a point on the West line of the said N.E. 1/4 of Section 13;

thence S.0°13'15"E. along said West line a distance of 487.5' to a point on the high-water-line of the North Platte River;

thence N.72°35'E. along said HWL a distance of 82.5' ;  
thence N.55°32'E. along said HWL a distance of 89.0' ;  
thence N.89°20'E. along said HWL a distance of 142.0' ;  
thence S.80°15'E. along said HWL a distance of 140.1' ;  
thence N.37°30'E. a distance of 12.0 feet to a point on the High-water-line of said Trout Run;

thence N.33°30'W. along said HWL a distance of 79.0' ;  
thence N.33°20'E. along said HWL a distance of 71.0' ;  
thence N.51°20'E. along said HWL a distance of 133.5' ;  
thence N.49°40'E. along said HWL a distance of 64.5' ;  
to the original point of beginning.

IN ADDITION TO THE FOREGOING IS THE FOLLOWING: (Block 4): ALL THAT PORTION OF: the N.E. 1/4 of Section 13, T.17N., R.84W., Carbon County, Wyoming, within the following metes and bounds description: Beginning at the N.E. corner of said Section 13 a distance of 186.60' from the bearing S.15°15'E. a distance of 208.00' to the point of beginning of a circular curve to the right the radius of which is 232.00 feet;

thence continuing along said curve through a central angle of 39°50'30" a distance of 239.74' to the point of termination of said curve;

thence S.81°59'45"E. a distance of 273.97 feet ;  
thence N.02°03'45"E. a distance of 120.80 feet ;  
thence N.71°54'00"W. a distance of 407.73 feet ;  
thence N.67°51'15"W. a distance of 167.44 feet ; to a point on the High-water-line of Trout Run;

thence S.58°00'W. along said HWL a distance of 78.2' ;  
thence S.89°20'W. along said HWL a distance of 282.2' ;  
thence S.20°01'15"E. a distance of 112.2' to the point of intersection with a circular arc the radius of which is 60.00' ; said point of intersection also being a point of tangence for a line bearing N.59°27'00"E. which continuing 103°08'27" a distance of 108.01' to the original point of beginning.

ALLEN W. MACE  
LICENSED LAND SURVEYOR  
P.O. BOX 638  
SARATOGA, WYOMING

SURVEYED BY:  
PLOTTED BY:  
CHECKED BY:  
PROJECT NO: 2048-2307-123-123-5348