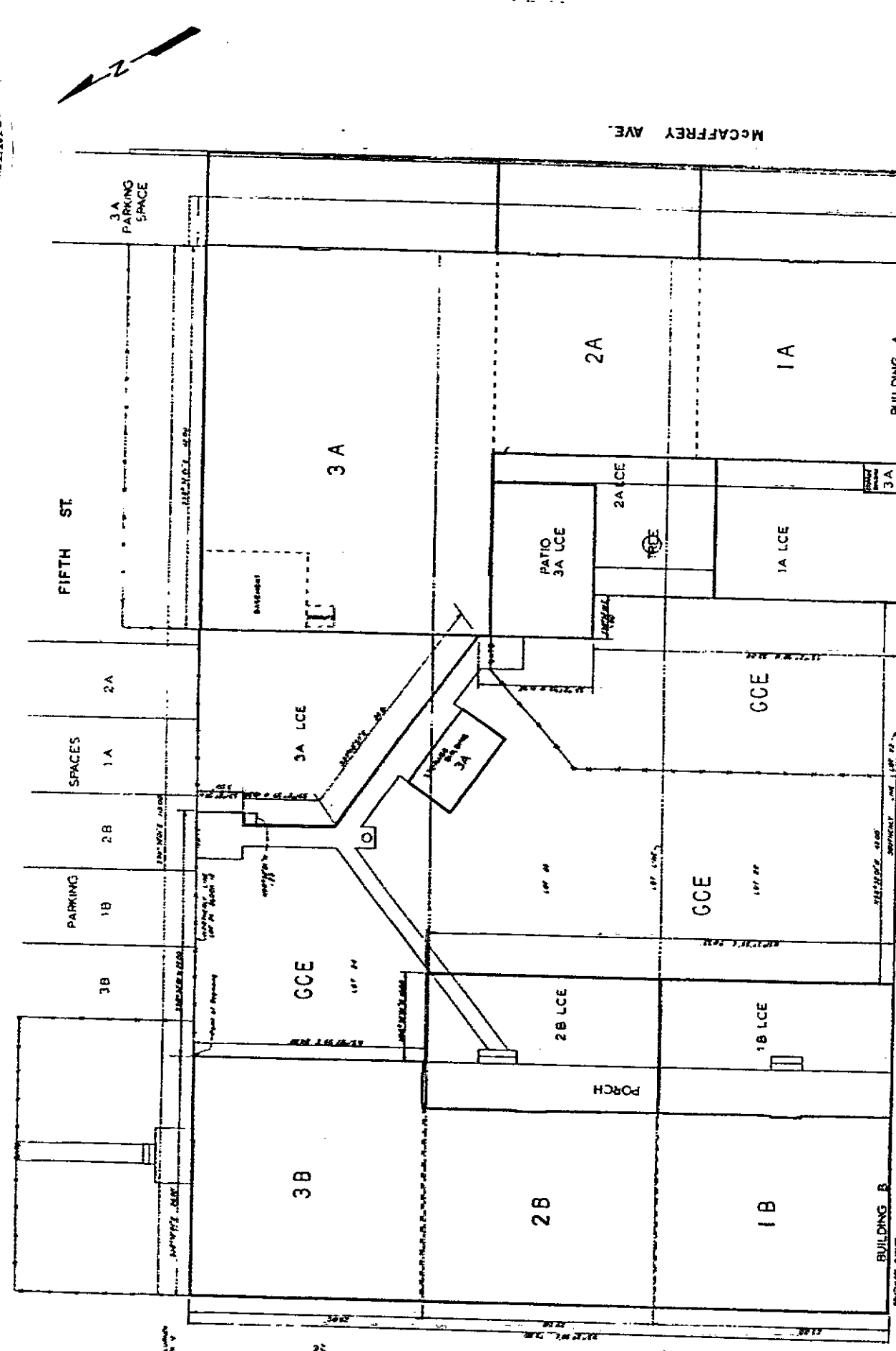


**LEGEND**  
 SCALE 1" = 6'  
 Building boundaries  
 Fence  
 Limited Common Element boundaries  
 General Common Element  
 G.C.E.  
 D-61.5

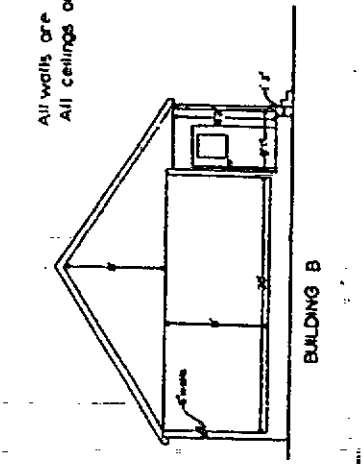
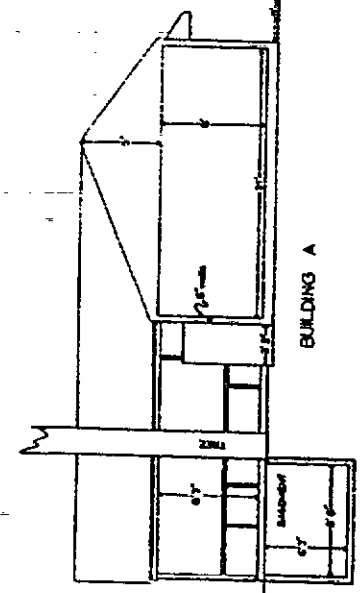
**OWNERS' CERTIFICATE**  
 JOHN R. P. WHEELER and HAROLD S. JONES, as owners of the herein described real property, does hereby certify that this map has been prepared pursuant to the purposes stated in the Condominium Declaration for Pine Lodge Condominium, recorded in Book 570, at Reception No. 529226, records of the Clerk and Recorder, County of Carbon, State of Wyoming.

**CERTIFICATE OF ENGINEER**  
 I, GEORGE D. CRANK of Kemmerer, Wyoming, do hereby certify that this map fully and accurately depicts the location and the horizontal and vertical measurements of the units, the unit dimensions and that such map was prepared subsequent to substantial completion of the improvements and that the property was surveyed as shown on this map, and the property is described as Lots 27, 23 and 24 of Block 12 of the Original Town of Grand Encampment, County of Carbon, State of Wyoming.

STATE OF WYOMING }  
 COUNTY OF CARBON } SS  
 I, the foregoing Certificates were acknowledged before me this 5th day of November 1973 by JOHN R. P. WHEELER and HAROLD S. JONES and GEORGE D. CRANK, a licensed Engineer. Witness my hand and official seal this 5th day of November 1973.  
 Notary Public



# PINE LODGE CONDOMINIUMS



All walls are 6" thick  
 All ceilings are 8"

**CLERK AND RECORDERS CERTIFICATE**  
 Accepted for filing in the office of the Clerk and Recorder of the County of Carbon, State of Wyoming, this 5th day of November 1973.  
 Clerk and Recorder  
 COUNTY OF CARBON  
 STATE OF WYOMING

WYO RE and LS REG No. 574