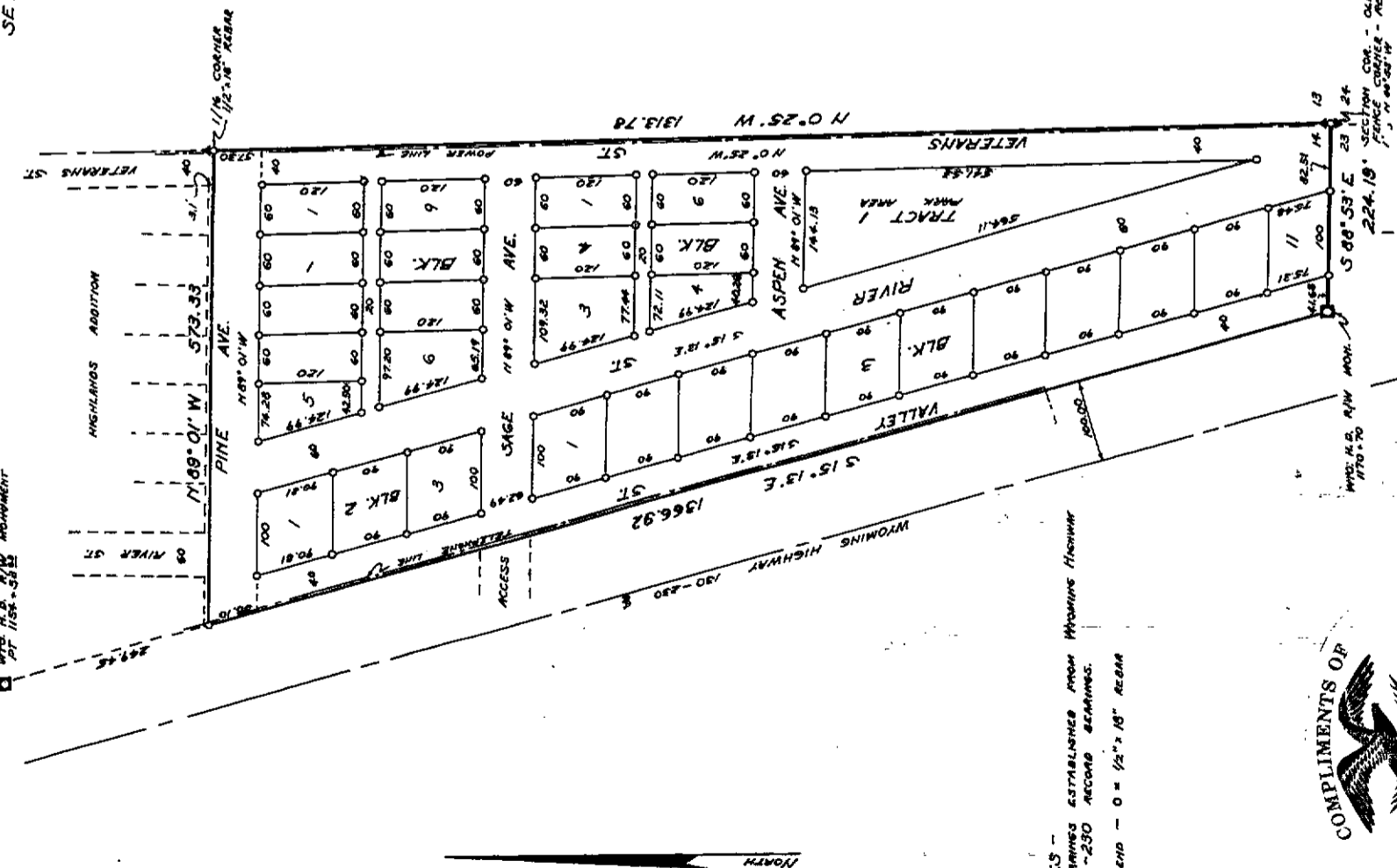


— SNOWY RANGE HEIGHTS ADDITION — TO THE TOWN OF SARATOGA WYOMING

IN THE
SE 1/4, SE 1/4 SEC. 14 T. 17 N., R. 84 W.
SCALE 1" = 100'



KNOW ALL MEN BY THESE PRESENTS: THAT THE SARATOGA DEVELOPMENT COMPANY, A WYOMING CORPORATION, THE UNDERSIGNED, OF SARATOGA, CARBON COUNTY, WYOMING, THE SOLE OWNERS AND MANAGERS OF THE REAL ESTATE SHOWN ON THIS MAP AND PLAT, AND HERETOFOR ONLY DESCRIBED, HAVE Laid out and marked, and at these presents lay out and mark the said real estate estate under the name of the SNOWY RANGE HEIGHTS ADDITION TO THE TOWN OF SARATOGA IN THE COUNTY OF CARBON, STATE OF WYOMING, being Lots 1-9 with inclusive in Block 1; Lots 1-3 with inclusive in Block 2; Lots 1-11 with inclusive in Block 3; Lots 1-6 with inclusive in Block 4; Tract 1, and the streets and alleys included in the description, and they do hereby dedicate in perpetuity to the use of the public all streets and alleys shown on this plat.

THE UNDERSIGNED, SARATOGA DEVELOPMENT COMPANY, CERTIFY AND FURTHER DECLARE THAT THE FOREGOING ADDITION IS DESCRIBED AS FOLLOWS: A TRACT OF LAND SITUATED IN THE SE 1/4 of the SE 1/4 of the SECTION 14, Township 17 North, Range 84 West of the 6th Principal Meridian and described as follows: BEGINNING at the southwest corner of Section 14, Township 17 North, Range 84 West of the 6th Principal Meridian; thence North 0°25' West a distance of 1315.78 feet to the east 1/4 corner of the SE 1/4 of said Section 14; thence North 89° 01' W a distance of 573.33 feet to the east right of way line of Wyoming Highway 130-230; thence South 15°13' East a distance of 1366.92 feet along said right of way line to Wyoming Highway Right of Way Monument, Sta 1170+70; thence S 88°53'E a distance of 224.19 feet to the point of BEGINNING, CONTAINING 12019 ACRES, as appears on this plat and map, and that the same and foregoing described addition is platted and laid out with the free consent and in accordance with the desires of the undersigned owners and proprietors.

IN WITNESS WHEREOF, THE SAID SARATOGA DEVELOPMENT COMPANY HAS CAUSED THESE PRESENTS TO BE EXECUTED IN ITS NAME BY A. L. WELTON, President, and attested by E. U. SHIPLEY Secretary. DATED this 13th day of December, 1967.

SARATOGA DEVELOPMENT COMPANY, A WYOMING CORPORATION.
A. L. WELTON, President
E. U. SHIPLEY, Secretary

STATE OF WYOMING, SS
COUNTY OF CARBON)
On this 13th day of December, 1967, before me personally appeared A. L. WELTON, to me personally known, who being duly sworn, did say that he is the President of the Saratoga Development Company, a Wyoming Corporation, and that the seal affixed to this instrument is the corporate seal of said corporation and this instrument was signed and sealed on behalf of said corporation by authority of its board of directors and this instrument is the free act and deed of said corporation, given under my hand and notarial seal this 13th day of December, 1967.
My notarial commission expires on 12/31/68.
Notary Public

IN WITNESS WHEREOF, THE TOWN OF SARATOGA, A MUNICIPAL CORPORATION, HAS, PURSUANT TO A RESOLUTION OF ITS COUNCIL MEMBERS duly adopted, freely and voluntarily consented to the making of this dedication and has caused these presents to be executed in its name by CHARLES L. "BOB" WELTON, its mayor, and attested by DANIEL L. FRENCH, its town clerk.

TOWN OF SARATOGA, A MUNICIPAL CORPORATION
CHARLES L. WELTON, Mayor
DANIEL L. FRENCH, Town Clerk

STATE OF WYOMING, SS
COUNTY OF CARBON)
On this 13th day of December, 1967, before me personally appeared CHARLES L. "BOB" WELTON, to me personally known, who being duly sworn, did say that he is the Mayor of the Town of Saratoga, a municipal corporation, and that the seal affixed to this instrument is the corporate seal of said corporation and this instrument was signed and sealed on behalf of said corporation by authority of its town council and this instrument is the free act and deed of said corporation, given under my hand and notarial seal this 13th day of December, 1967.
My notarial commission expires on 12/31/67.
Notary Public

STATE OF WYOMING, SS
COUNTY OF CARBON)
I, LLOYD A. BROWN, of Saratoga, Wyoming hereby certify that I accurately surveyed the SNOWY RANGE HEIGHTS ADDITION TO THE TOWN OF SARATOGA AS SHOWN ON THIS MAP AND PLAT AND THAT THE LOTS, BLOCKS, STREETS AND ALLEYS ARE ACCURATELY STAKED AND MARKED.

SUBSCRIBED IN MY PRESENCE AND SWORN TO BEFORE ME THIS 13th day of December, 1967.
MY NOTARIAL COMMISSION EXPIRES _____
NOTARY PUBLIC

STATE OF WYOMING, SS
COUNTY OF CARBON)
I, R. B. EMSTROM, THE ELECTED, QUALIFIED, AND ACTING COUNTY CLERK AND EX OFFICIO REGISTER OF DEEDS OF CARBON COUNTY, WYOMING, DO HEREBY CERTIFY THAT THIS PLAT WAS FILED IN MY OFFICE IN SARATOGA, WYOMING ON THIS 13th day of December, 1967, AND ONLY RECORDED IN BOOK 508 AT PAGE 111.
(Inst. No. 41159) - AT LODDAN
MY TERM EXPIRES JAN. 4, 1971.

THE FOREGOING PLAT OF SNOWY RANGE HEIGHTS ADDITION TO THE TOWN OF SARATOGA, CARBON COUNTY, WYOMING, INCLUDING LANDS ADJACENT TO THE SAID TOWN IS PURSUANT TO THE PROVISIONS OF SECTION 21-1102 WYOMING COMPILS STATUTES OF 1945.
APPROVED THIS 5th day of MARCH 1968

THE BOARD OF COUNTY COMMISSIONERS
OF THE COUNTY OF CARBON, STATE OF WYOMING
Attest: Lloyd A. Brown, County Clerk
Chairman

NOTES -
1. DEEDS ESTABLISHED FROM WYOMING HIGHWAY 130-230 RECORD REMAINS.
2. Legend - 0 = 1/2" x 18" REBAR

