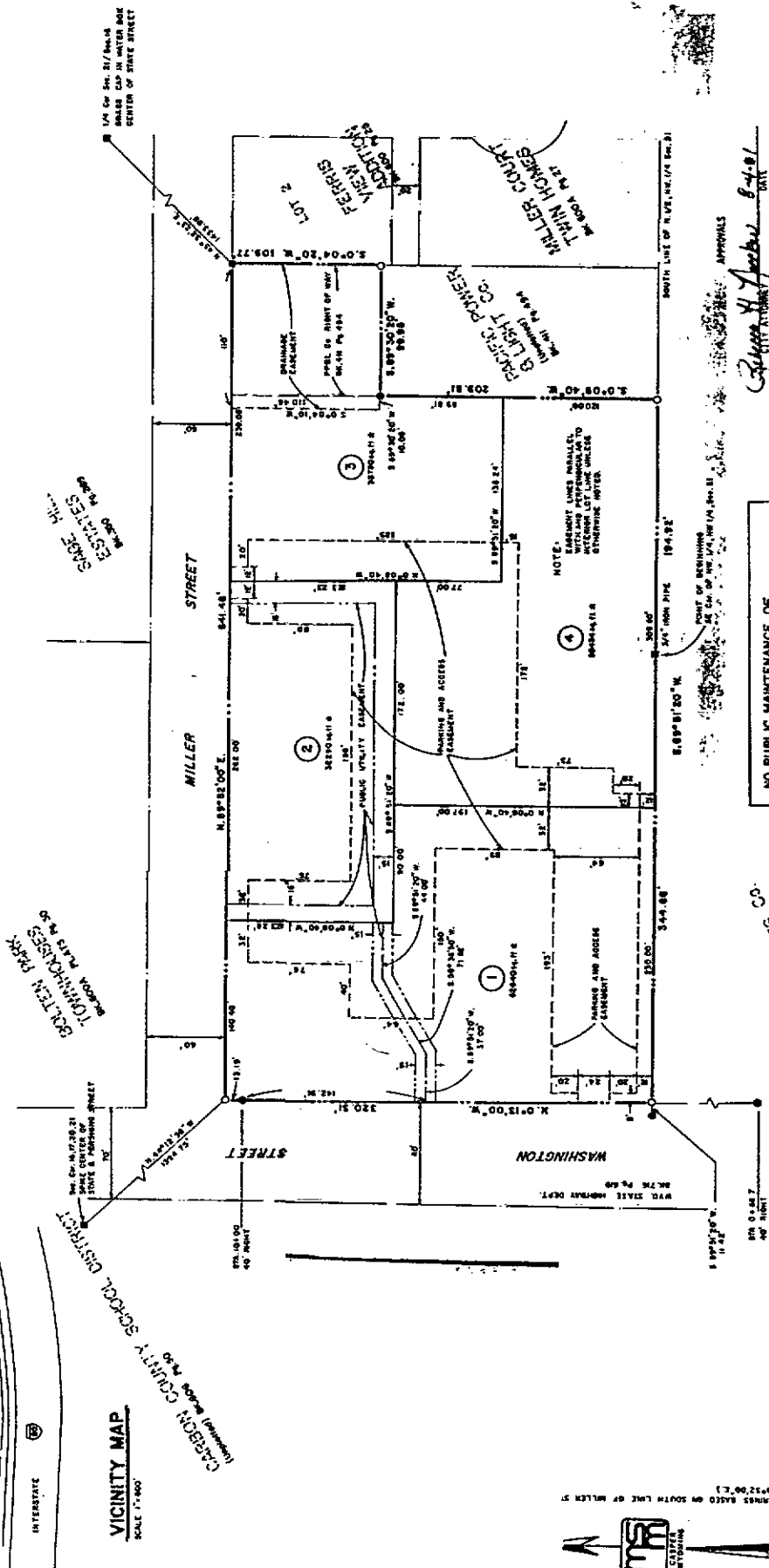
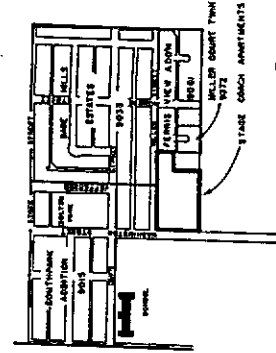


STAGE COACH APARTMENTS SUBDIVISION

THE CITY OF RAWLINS, CARBON COUNTY, WYOMING
 BEING
 A PARCEL OF LAND SITUATED IN THE S 1/2 N 1/2 NW 1/4,
 SEC. 21, T.21N., R.87W., 6th P.M. CARBON COUNTY, WYOMING



DEDICATION
 WE, THE UNDERSIGNED, HEREBY WARRANT THAT WE ARE ALL AND THE ONLY PARTIES
 WHOSE INTERESTS ARE AFFECTED BY THE SUBDIVISION OF THE LAND SHOWN ON THIS PLAT AND, BY
 MAKING THIS PLAT PUBLIC, WE AGREE TO WAIVE OUR RIGHTS AS TO THE SUBDIVISION OF THE
 SAID SUBDIVISION DESCRIBED AS FOLLOWS:
 A PORTION OF THE S 1/2 OF THE N 1/2 OF THE NW 1/4 OF SECTION 21,
 T.21N., R.87W., 6th P.M., CARBON COUNTY, WYOMING BEING MADE PARTI-
 CULARLY DESCRIBED AS FOLLOWS:
 BEGINNING AT A 3/4" 1000 P.M. AT THE SE CORNER OF NW 1/4 OF THE NW
 1/4 OF SECTION 21;
 THENCE S89°51'55" W. 304.68 FEET ALONG THE SOUTH LINE
 OF SAID SECTION 21 TO THE N 1/2 OF SECTION 21 TO A 5/8" REBAR AND
 ALUMINUM CAP AT THE EAST LINE OF WASHINGTON STREET AS DESCRIBED IN
 CARBON COUNTY DEED RECORDS BOOK 715 PAGE 651;
 THENCE N07°37'40" W. A DISTANCE OF 200.31 FEET ALONG THE EAST LINE
 OF SAID WASHINGTON STREET TO A 5/8" REBAR AND ALUMINUM CAP AT
 THE SOUTHWEST CORNER OF THE PARCEL DESCRIBED IN CARBON
 COUNTY DEED RECORDS BOOK 600 PLATS PAGE 201;
 THENCE N07°52'40" W. A DISTANCE OF 641.48 FEET ALONG THE SOUTH LINE
 OF SAID MILLER STREET TO A 5/8" REBAR AND ALUMINUM CAP AT THE
 SOUTHWEST CORNER OF THE PARCEL DESCRIBED IN CARBON
 COUNTY DEED RECORDS BOOK 600 PLATS PAGE 251;
 THENCE S04°04'20" W. A DISTANCE OF 109.33 FEET ALONG THE WEST LINE
 OF SAID MILLER STREET TO A 5/8" REBAR AND ALUMINUM CAP AT
 THE SOUTHWEST CORNER OF THE PARCEL DESCRIBED IN CARBON COUNTY
 DEED RECORDS BOOK 411 PAGE 494;
 THENCE S00°20'20" W. A DISTANCE OF 99.95 FEET ALONG THE NORTH LINE
 OF SAID MILLER STREET TO A 5/8" REBAR AND ALUMINUM CAP AT THE
 CORNER THEREOF;
 THENCE S04°04'20" W. A DISTANCE OF 200.31 FEET ALONG THE WEST LINE
 OF SAID MILLER STREET TO A 5/8" REBAR AND ALUMINUM CAP AT THE SOUTHWEST
 CORNER THEREOF AND ON THE SOUTH LINE OF THE N 1/2 OF THE NW 1/4 OF
 SECTION 21;
 THENCE S89°51'55" W. A DISTANCE OF 194.92 FEET ALONG THE SOUTH LINE
 OF THE N 1/2 OF THE NW 1/4 OF SECTION 21 TO THE POINT OF BEGINNING.
 THE ABOVE DESCRIBED PARCEL CONTAINING 104,140 SQUARE FEET, MORE OR
 LESS, BEING THE REMAINDER OF THE ABOVE DESCRIBED PARCEL ON THE SOUTH
 LINE OF MILLER STREET AS N07°52'40" W.

WE HEREBY GRANT TO THE CITY OF RAWLINS, WYOMING, FOR PUBLIC USE, THE
 PUBLIC LAND SHOWN HEREON FOR THEIR INDICATED PUBLIC UTILITIES, WASTE
 UTILITY, DRAINAGE, PARKING, AND ACCESS AREAS TO BE USED IN CONNECTION WITH THE
 STAGE COACH APARTMENTS SUBDIVISION. WE FURTHER CERTIFY
 THAT THE SAID PUBLIC LANDS ARE NOT SUBJECT TO ANY OTHER RIGHTS OR
 INTERESTS AND ARE NOT BEING OFFERED FOR SALE OR LEASE BY US OR ANY
 OTHER PARTY. THE SAID PUBLIC LANDS ARE BEING OFFERED TO THE CITY OF
 STAGE COACH APARTMENTS SUBDIVISION IS WITH THE FREE CONSENT AND IN
 ACCORDANCE WITH THE DESIRES OF THE UNDERSIGNED OWNERS.
 STAGE COACH APARTMENTS, A LIMITED PARTNERSHIP
 BY: *[Signature]*
 GENERAL PARTNER
 PARTNERSHIP ACKNOWLEDGMENT
 STATE OF WYOMING)
 COUNTY OF CARBON)

ON THIS 26th DAY OF AUGUST 1983, BEFORE ME PERSONALLY
 APPEARED *[Signature]*, A LIMITED PARTNER OF STAGE
 COACH APARTMENTS, A LIMITED PARTNERSHIP, DESCRIBED IN AND WHO RECEIVED
 THE FOREGOING INSTRUMENT, AND HE THEREUPON ACKNOWLEDGED THAT HE
 HAD AUTHORITY TO EXECUTE THE SAME AS AND FOR THE ACT AND DEED OF SAID
 LIMITED PARTNERSHIP.
 WITNESS MY HAND AND OFFICIAL SEAL
 MY COMMISSION EXPIRES
 INDIVIDUAL ACKNOWLEDGMENT
 STATE OF WYOMING)
 COUNTY OF CARBON)
 ON THIS 26th DAY OF AUGUST 1983, BEFORE ME PERSONALLY
 APPEARED *[Signature]*, CHAIRMAN AND TRUSTEE, KNOWN TO ME TO BE THE
 INDIVIDUALS IN AND WHO EXECUTED THE FOREGOING INSTRUMENT.
 WITNESS MY HAND AND OFFICIAL SEAL
 MY COMMISSION EXPIRES August 26, 1983

CERTIFICATE OF SURVEY
 I, LARRY G. BOWTELL, A REGISTERED LAND SURVEYOR IN THE STATE OF WYOMING,
 DO HEREBY CERTIFY THAT A SURVEY OF THIS SUBDIVISION WAS MADE BY ME
 SUPERVISION, IN THE MONTH OF AUGUST, 1983, AND THAT THE PLAT ACCURATELY
 AND PROPERLY SHOWS SAID SUBDIVISION.
 LARRY G. BOWTELL, DATE 8/26/83
 REGISTRATION NO. 3307

1983
 REGISTERED PROFESSIONAL ENGINEER - SURVEYING & PLANNING
 MSM CONSULTANTS INC.
 ENGINEERING - ARCHITECTURE - SURVEYING - PLANNING
 5084801
 COULTER AGENCY
 1-190
 FINAL PLAT
 STAGE COACH APARTMENTS
 RAWLINS, WYOMING
 JULY 1981

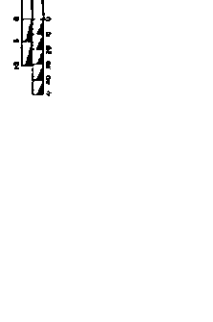
THIS PLAT, APPROVED BY THE CITY COUNCIL OF RAWLINS, WYOMING,
 ON THE 27th DAY OF AUGUST 1983, IS HEREBY FILED WITH
 THE CLERK OF CARBON COUNTY FOR CONFORMANCE TO THE CITY
 OF THE PUBLIC REGULATIONS SHOWING HEREON, SUBJECT TO THE PROVISIONS
 THAT APPROVAL IN NO WAY OBLIGATES THE CITY OF RAWLINS FOR FINANCING
 OR CONSTRUCTION OF THE PROJECT AS SPECIFICALLY ADOPTED BY THE CITY
 COUNCIL AND FURTHER THAT SAID APPROVAL SHALL IN NO WAY OBLIGATE THE
 CITY OF RAWLINS FOR MAINTENANCE OF STREETS WHICH ARE NOT DEDICATED TO
 THE PUBLIC AND UNLESS ALL APPROPRIATIONS AND ACCEPTED BY PROPER RESOLUTION.
 THE SATISFACTION OF THE CITY COUNCIL AND ACCEPTED BY PROPER RESOLUTION.
 APPROVED THIS 26th DAY OF August 1983
 CITY CLERK

NO PUBLIC MAINTENANCE OF
 PARKING AND ACCESS AREAS PROVIDED.
 NO PUBLIC MAINTENANCE OF
 WATER AND SEWER UTILITIES PROVIDED.

ASSURANCES
 SATISFACTORY ASSURANCES IN THE FORM OF LETTERS OF CREDIT
 FROM THE BANK OF AMERICA NATIONAL ASSOCIATION, N.C. HAVE BEEN
 OBTAINED TO SECURE THE FULL PUBLIC IMPROVEMENTS WITHIN THIS SUBDIVISION.
 DATE 8/23/83

RECORDED'S CERTIFICATE
 I, MARY K. BOWEN, THE ONLY ELECTED, QUALIFIED AND ACTING CLERK
 OF THE COUNTY OF CARBON COUNTY, DO HEREBY CERTIFY THAT THIS
 PLAT WAS FILED IN MY OFFICE ON THE 26th DAY OF AUGUST 1983,
 CARBON COUNTY, WYOMING, IN BOOK 600, PLAT 201, RECORD NO. 1831
 AND FULLY RECORDED IN BOOK 600, PLAT 201, RECORD NO. 1831
 AT 11:50 A.M. ON AUGUST 26, 1983.
 MARY K. BOWEN
 COUNTY CLERK OF CARBON COUNTY, WYOMING

LEGEND
 ● FOUND 5/8" REBAR W/ALUMINUM CAP
 ○ SET 5/8" REBAR W/ALUMINUM CAP LS 3307
 ● FOUND STATE HIGHWAY STANDING MARKER
 ■ FOUND SECTION CORNER AS NOTED



RAWLINS PLANNING COMMISSION
 APPROVED
 DATE 8/26/83

RAWLINS PLANNING COMMISSION
 APPROVED
 DATE 8/26/83

RAWLINS PLANNING COMMISSION
 APPROVED
 DATE 8/26/83

RAWLINS PLANNING COMMISSION
 APPROVED
 DATE 8/26/83

RAWLINS PLANNING COMMISSION
 APPROVED
 DATE 8/26/83

RAWLINS PLANNING COMMISSION
 APPROVED
 DATE 8/26/83

