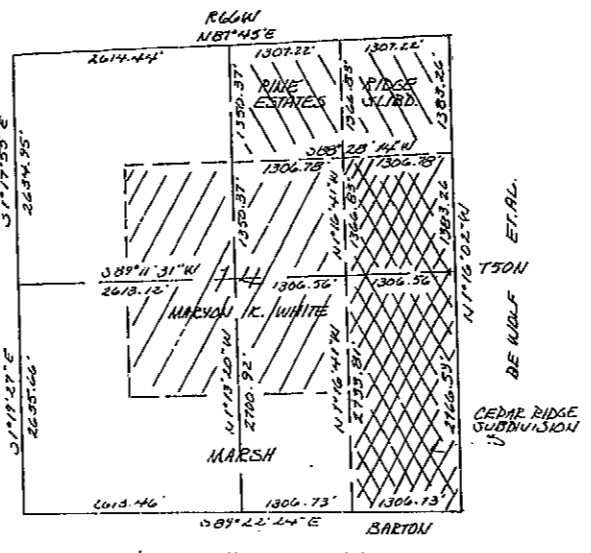


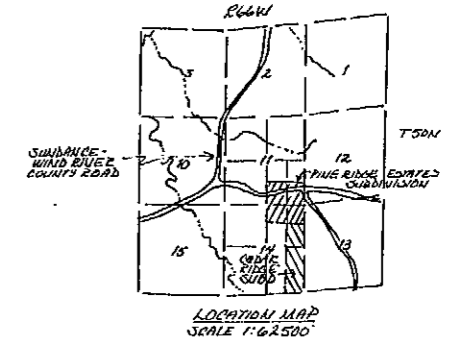
- A. CORN - N71°26'E 43.51'
- B. CORN - N8°49'50"W 80.97'
- C. CORN - S81°10'07"W 38.03'
- D. CORN - N17°53'40"E 45.92'



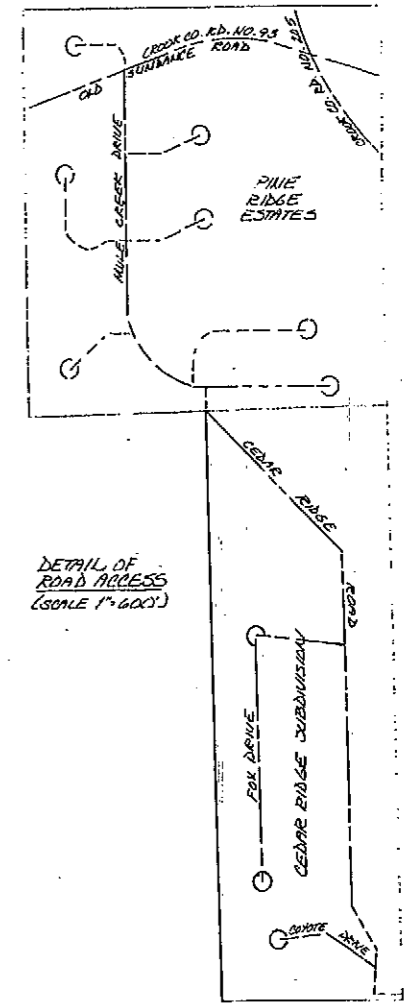
1"=200'



DETAIL OF SECTION 14
1"=1000'
(SHOWING ADJACENT OWNERSHIP)



LOCATION MAP
SCALE 1"=62500'



DETAIL OF ROAD ACCESS
(SCALE 1"=600')

LEGEND
 ○ 3/4" DIAMETER ALUMINUM CAP STRUCK AS PER DEM. MANUAL OF INSTRUCTIONS
 ⊕ INDICATES RURAL ADDRESS NUMBER

NOTE: ALL LOT CORNERS ARE MONUMENTED WITH A 1 1/2" DIAMETER ALUMINUM CAP MONUMENT ON A 10.5" X 2.4" CEDAR STRUCK PEGS 2375 UNLESS OTHERWISE SHOWN.

LEGAL DESCRIPTION
 THE SOUTHEAST 1/4 OF THE NORTHEAST 1/4 OF SECTION 14 AND THE EAST 1/2 OF THE SOUTHWEST 1/4 OF SECTION 14, T50N, R66W, OF THE SIXTH P.M., CROOK COUNTY, WYOMING.

CERTIFICATE OF SURVEYOR
 STATE OF WYOMING, COUNTY OF CROOK, I, RALPH W. GOODSON, OF SUNDANCE, CROOK COUNTY, WYOMING, HEREBY CERTIFY THAT THIS MAP WAS DRAWN FROM NOTES TAKEN DURING AN ACTUAL SURVEY DONE UNDER MY DIRECT SUPERVISION BY JOEL J. SCHULTZ FOR WINDSE WOLF & I, STRONG PERSONALLY RESPONSIBLE, DURING DECEMBER, 1982, AND BY JOSEPH L. FEELEY DURING MAY & JUNE, 1983, AND THAT THIS SURVEY IS ACCURATELY SHOWN HEREON.

APPROVAL BY CROOK COUNTY BOARD OF COMMISSIONERS
 THE PLATING OF THE PROPOSED CEDAR RIDGE SUBDIVISION IN CROOK COUNTY, WYOMING, AS SHOWN HEREON, IS APPROVED BY THE BOARD OF COUNTY COMMISSIONERS OF CROOK COUNTY, WYOMING, ON THIS 19th DAY OF July 1983.

NO PUBLIC WATER SUPPLY
 NO PUBLIC SEWAGE SYSTEM
 NO WASTE DISPOSAL
 NO STREET MAINTENANCE

STATE OF WYOMING
 COUNTY OF CROOK
 980
 I, _____, County Clerk, do hereby certify that this is a true and correct copy of the original as filed in my office on this _____ day of _____, 1983.

NOTE: PROTECTIVE COVENANTS ARE FILED IN THE OFFICE OF COUNTY CLERK OF CROOK COUNTY IN BK. # PHOTOS P6.

EASEMENTS
 EASEMENTS ARE HEREBY DEDICATED TO PUBLIC USE. THE LOCATION AND WIDTH OF WHICH IS SHOWN BY DASHED LINE ON THE ACCOMPANYING PLAN, AND SAID EASEMENTS MAY BE EMPLOYED IN FUTURE BY A GOVERNMENT OR ANY OTHER PARTY FOR THE PURPOSE OF INSTALLING, REPAIRING, REINSTALLING, REPLACING, AND MAINTAINING SEWER LINES, WATER LINES, AND OTHER PUBLIC UTILITIES. ALL RIGHTS OF PUBLIC UTILITIES NOW OR HEREINAFTER BEING GENERALLY UTILIZED BY THE PUBLIC, ALL EASEMENTS ARE 10 FEET WIDE UNLESS OTHERWISE NOTED.

DEDICATION
 THE HEREBY DESCRIBED PLATING OF THE CEDAR RIDGE SUBDIVISION IN CROOK COUNTY, WYOMING, AS APPEARS ON THIS PLAN, IS WITH THE FREE CONSENT AND IN ACCORDANCE WITH THE DESIRES OF THE UNDERSIGNED OWNERS, THE UNDERSIGNED OWNERS DO HEREBY RELEASE AND WAIVE ALL RIGHTS UNDER AND BY VIRTUE OF THE HOMESTEAD EXEMPTION LAWS OF THE STATE OF WYOMING, STREETS, SHOWING ON THIS PLAN, AND ANY HERETOFORE DEDICATED TO PUBLIC USE ARE HEREBY SO DEDICATED.

Harold Reach
Terry Reach
Robert W. Stevers
Donna E. Stevers
 THE FOREGOING INSTRUMENT WAS ACKNOWLEDGED BEFORE ME THIS 30th DAY OF JULY 1983 BY _____
 WITNESS MY HAND AND OFFICIAL SEAL.

 MY COMMISSION EXPIRES 10/7/86

FINAL PLAT
 OF
CEDAR RIDGE SUBDIVISION
 SE 1/4 NE 1/4 E 1/4 SE 1/4
 SECTION 14
 T50N R66W
 OF THE 6TH P.M.
 CROOK COUNTY, WYOMING

DEVELOPERS
 HAROLD AND TERRY D. REACH
 ROBERT W. & DONNA E. STEVERS

PREPARED BY
 BEARDLUXE ENGINEERING
 BOX 130
 SUNDANCE, WYOMING
 82129

24