

INDUSTRIAL SUBDIVISION TO THE TOWN OF SUNDANCE
FOUR OF SUNDANCE DEVELOPER
 LOCATED IN THE TOWN OF SUNDANCE, COUNTY OF TERRY, WYO.
 BY THE SIXTH PRINCIPAL MERIDIAN, CHOCOE COUNTY, WYOMING

FINAL PLAT

CERTIFICATE OF APPROVAL

The foregoing plat of the INDUSTRIAL SUBDIVISION TO THE TOWN OF SUNDANCE is hereby approved for filing by the Town Council of Sundance, Wyoming, this 15th day of May, 1984.

[Signatures]
 Town Council Representative
 Town Clerk

CERTIFICATE OF APPROVAL

The foregoing plat of an INDUSTRIAL SUBDIVISION TO THE TOWN OF SUNDANCE is hereby approved for filing by the Town Council of Sundance, Wyoming, this 15th day of May, 1984.

[Signatures]
 Town Council Representative
 Town Clerk

CERTIFICATE OF APPROVAL

The foregoing plat of an INDUSTRIAL SUBDIVISION TO THE TOWN OF SUNDANCE is hereby approved for filing by the Town Council of Sundance, Wyoming, this 15th day of May, 1984.

[Signatures]
 Town Council Representative
 Town Clerk

CERTIFICATE OF SURVEYOR

STATE OF WYOMING)
 COUNTY OF TERRY)

I, Ralph W. Gordon, of Sundance, Chocoe County, Wyoming, do hereby certify that this plat was prepared by me or under my direct supervision during the year 1983, and that the survey is accurate throughout.

[Seal]

RALPH W. GORDON, PEALS 2308

CURVE	RADIUS	LENGTH	CHORD	CHORD BEARING	DELTA ANGLE	TANGENT
1	245.48	75.81	71.60	77° 25' 41" E	111° 18' 18" S	171.84
2	277.17	101.15	95.15	72° 41' 11" E	111° 18' 18" S	171.84
3	252.48	75.81	71.60	77° 25' 41" E	111° 18' 18" S	171.84

LINE	BEARING	DISTANCE
1	N 89° 26' 03" E	456.84
2	S 87° 42' 03" E	317.69
3	N 89° 26' 03" E	456.84
4	S 87° 42' 03" E	317.69

LEGEND

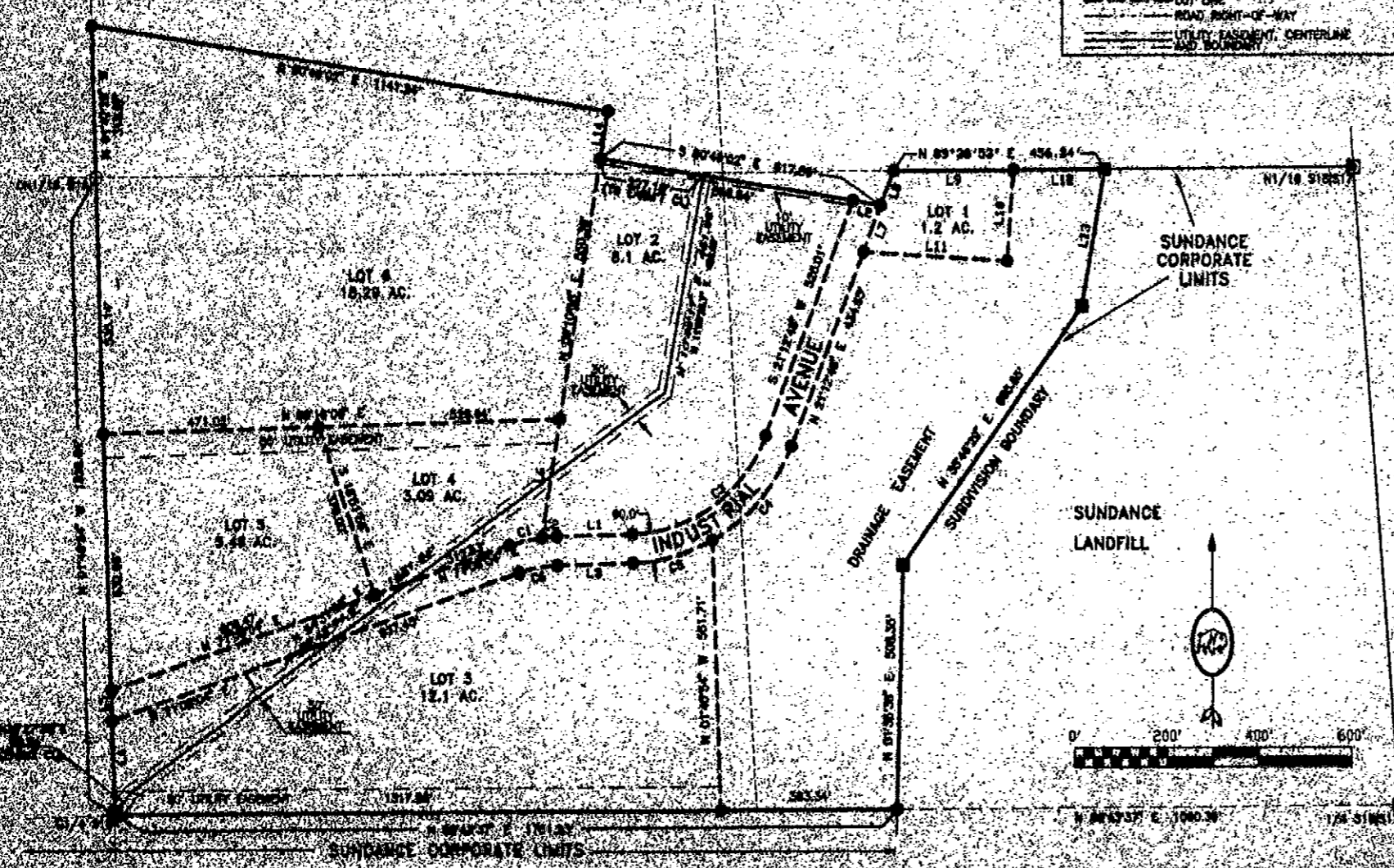
SYMBOLS AND CONVENTIONS DESCRIBED ABOVE WITH

- ALUMINUM SURVEY MONUMENT BY OTHER PLAT
- 1/2" ALUMINUM BURN-CAP BY OTHER PLAT
- 1 1/2" ALUMINUM BURN-CAP STAMPED PEALS 2308 SET PREVIOUS SURVEY
- 1 1/2" ALUMINUM BURN-CAP STAMPED PEALS 2308 SET PREVIOUS SURVEY
- 1 1/2" ALUMINUM BURN-CAP STAMPED PEALS 2308 MOUNTED STOP IS NO. 2 X 2 1/2" ROSSAR, SET THIS SURVEY
- SANITARY SEWER MAINLINE
- SECTION LINE
- QUARTER SECTION LINE
- SIXTEENTH SECTION LINE
- SUBDIVISION BOUNDARY
- ROAD RIGHT-OF-WAY
- LITELTY EASEMENT, CENTERLINE AND BOUNDARY

CERTIFICATE OF RECORD

The above described plat of an industrial subdivision to the town of Sundance, Wyoming, was filed for record in the office of the County Clerk of Terry County, Wyoming, on this 15th day of May, 1984, and the same is hereby recorded as a public document.

[Signatures]
 County Clerk



The above described plat of an industrial subdivision to the town of Sundance, Wyoming, was filed for record in the office of the County Clerk of Terry County, Wyoming, on this 15th day of May, 1984, and the same is hereby recorded as a public document.

[Signatures]
 County Clerk

ACKNOWLEDGEMENT

State of Wyoming)
 County of Terry)

The foregoing plat was acknowledged before me

[Signatures]
 and *[Signatures]* on this 15th day of May, 1984.

Witness my hand and official seal.

[Signature]
 County Clerk

By certification of:

BEAR LODGE LTD., INC.
 Consulting Engineers & Land Surveyors
 P.O. Box 100, 611 West St., Sundance, WY 82401

INDUSTRIAL SUBDIVISION TO THE TOWN OF SUNDANCE
 TOWN OF SUNDANCE DEVELOPER
 LOCATED IN THE TOWN OF SUNDANCE, COUNTY OF TERRY, WYOMING
 BY THE SIXTH PRINCIPAL MERIDIAN, CHOCOE COUNTY, WYOMING

FINAL PLAT

56