

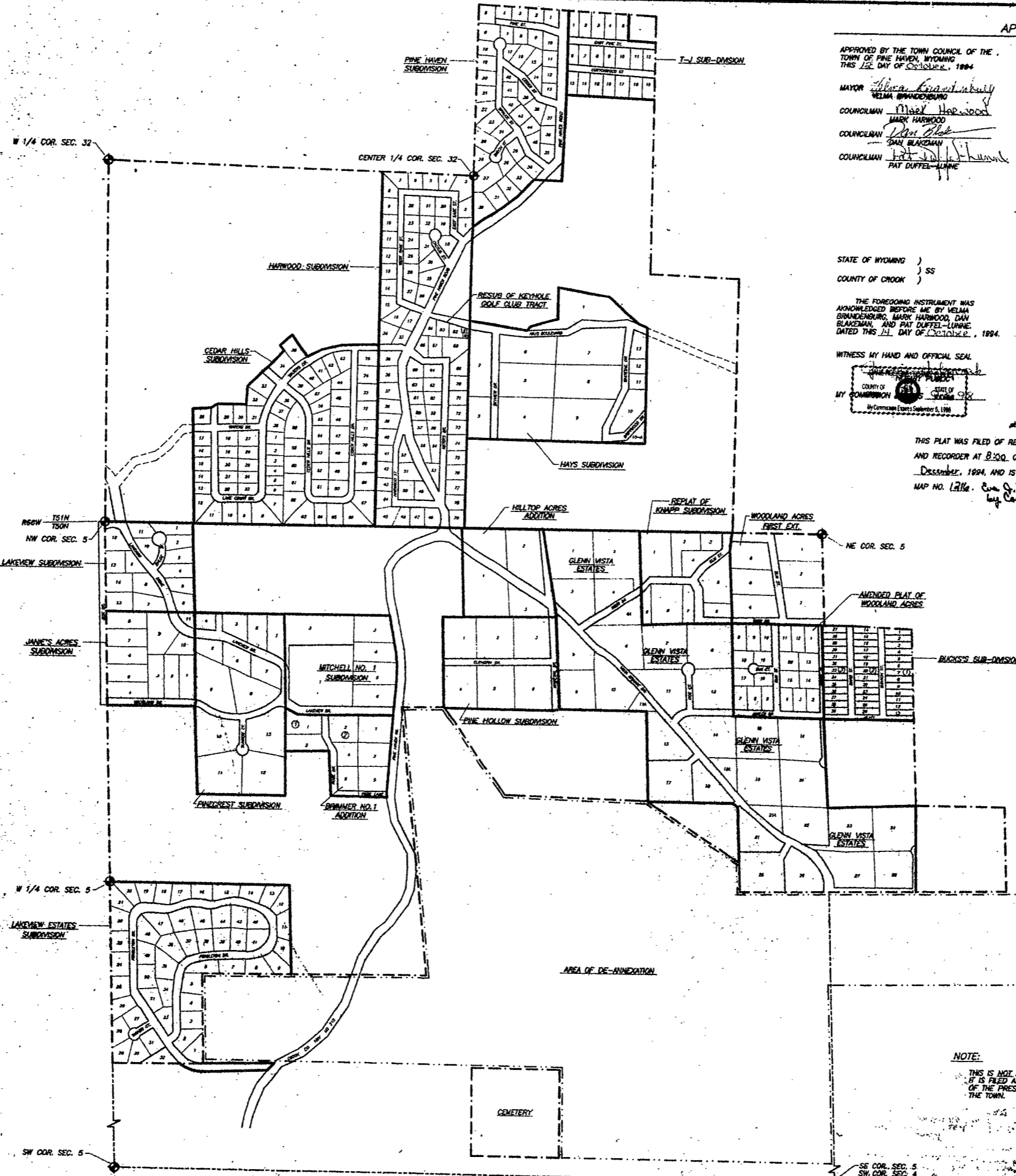
DESCRIPTION OF ORIGINAL TOWN BOUNDARY PER MAP SHOWING PROPOSED CORPORATE LIMITS OF THE TOWN OF PINE HAVEN, WYOMING, A JULY, 1983 SURVEY BY BEARLODGE ENGINEERING:

PORTIONS OF SECTION 32, T.51N., R.69W., AND SECTIONS 4 AND 5, T.50N., R.69W. OF THE SIXTH P.M., CROOK COUNTY, WYOMING, BEING MORE PARTICULARLY DESCRIBED BY METES AND BOUNDS AS FOLLOWS:

BEGINNING AT A BRASS CAP MARKING THE SOUTHWEST CORNER OF SAID SECTION 32;
 THENCE N70°00'00"E, 2670.48' TO A BRASS CAP MARKING THE WEST 1/4 CORNER OF SAID SECTION 32;
 THENCE S28°34'48"E, 2638.74' TO A BRASS CAP MARKING THE CENTER 1/4 CORNER OF SAID SECTION 32;
 THENCE N12°28'25"E, 1291.08' TO THE NORTHWEST CORNER OF THE PINE HAVEN SUBDIVISION;
 THENCE S87°31'23"E, 1553.89' TO A BRASS CAP MARKING THE NORTHWEST 1/16 CORNER OF SAID SECTION 32;
 THENCE S017°59'W, 1273.89' TO A BRASS CAP MARKING THE CENTER-WEST 1/16 CORNER OF SAID SECTION 32;
 THENCE S07°55'48"W, 841.74' TO A 1-1/2" DIA. ALUMINUM CAP MARKING THE D-N-SE 1/64 CORNER OF SAID SECTION 32;
 THENCE S82°24'58"E, 878.04' TO A BRASS CAP MARKING THE NE-SE 1/64 CORNER OF SAID SECTION 32;
 THENCE S70°25'09"W, 1808.03' TO A BRASS CAP MARKING THE E-E 1/64 CORNER BETWEEN SAID SECTION 32 AND 3;
 THENCE S88°59'08"E, 874.03' TO A BRASS CAP MARKING THE SOUTHEAST CORNER OF SAID SECTION 32;
 THENCE S2°30'32"E, 658.04' TO A BRASS CAP MARKING THE N-N 1/64 CORNER BETWEEN SAID SECTION 32 AND 4;
 THENCE S82°42'33"E, 687.80' TO A BRASS CAP MARKING THE NW-NW 1/64 CORNER OF SAID SECTION 4;
 THENCE S2°30'29"E, 1344.20' TO A BRASS CAP MARKING THE SW-NW 1/64 CORNER OF SAID SECTION 4;
 THENCE N89°34'16"E, 875.21' TO A BRASS CAP MARKING THE C-S-NW 1/64 CORNER OF SAID SECTION 4;
 THENCE S2°31'58"E, 671.98' TO A BRASS CAP MARKING THE C-W 1/16 CORNER OF SAID SECTION 4;
 THENCE N89°41'27"E, 874.43' TO A BRASS CAP MARKING THE C-W-E 1/64 CORNER OF SAID SECTION 4;
 THENCE S2°34'33"E, 687.38' TO AN IRON STEEL POST;
 THENCE S88°28'09"W, 2021.18' TO THE N-S 1/64 CORNER BETWEEN SAID SECTION 4 AND 5;
 THENCE S22°28'35"E, 1341.82' TO THE S-S 1/64 CORNER BETWEEN SAID SECTION 4 AND 5;
 THENCE N89°20'58"W, 2708.99' TO THE C-S-S 1/64 CORNER OF SAID SECTION 5;
 THENCE N22°23'38"W, 658.59' TO THE C-S 1/16 CORNER OF SAID SECTION 5;
 THENCE S88°17'54"W, 2725.11' TO THE S 1/16 CORNER BETWEEN SAID SECTION 5 AND 6;
 THENCE N1°53'44"W, 1343.83' TO THE WEST 1/4 CORNER OF SAID SECTION 5;
 THENCE N1°54'20"W, 2878.45' TO THE POINT OF BEGINNING.
 THE ABOVE DESCRIBED CORPORATE LIMITS BOUNDARY ENCLOSES 923.3 ACRES MORE OR LESS.

DESCRIPTION OF AREA OF DE-ANNEXATION PER ORDINANCE NO. 4, 1991:

A TRACT OF LAND LYING IN SECTION 4 AND 5, T.50N., R.69W., OF THE SIXTH P.M., CROOK COUNTY, WYOMING, SAID TRACT COMPRISED OF THE FOLLOWING:
 THE N1/2 NW1/4 SW1/4 AND THE NW1/4 NE1/4 SW1/4 OF SAID SECTION 4, THE SE1/4 NW1/4 SW1/4, SE1/2 NE1/4 SW1/4, N1/2 SE1/4 SW1/4, NE1/4 SW1/4 SE1/4, N1/2 SE1/4 SW1/4, AND A TRACT COMPRISED OF ALL OR PORTIONS OF THE E1/2, SE1/4, NE1/4, NW1/4, SW1/4, NW1/4 NE1/4, SW1/4 NE1/4, SE1/2 SW1/4 NE1/4, AND SW1/4 SE1/4 NE1/4, OF SAID SECTION 5, BEING MORE PARTICULARLY DESCRIBED AS FOLLOWS:
 BEGINNING AT THE NW 1/4 CORNER OF SAID SECTION 5 FROM WHICH THE NW CORNER OF SAID SECTION 5 LIES N88°12'48"W, 2881.78' (THE BASIS OF BEARING FOR THIS DESCRIPTION);
 THENCE S18°44'04"W, 1418.62' TO A 3/4" IRON PIPE WHICH POINT MARKS THE NORTHEAST CORNER OF THAT TRACT DESCRIBED IN THE WARRANTY DEED RECORDED IN BOOK OF PLATS 143, PAGE 114 IN THE OFFICE OF THE CROOK COUNTY CLERK, AND THE TRUE POINT OF BEGINNING;
 THENCE S84°48'48"E, 1084.82' ALONG THE EASTERLY LINE OF SAID TRACT RECORDED ON PAGE 114, TO A 3/4" DIA. IRON PIPE;
 THENCE S80°11'22"W, 30.14' ALONG THE SOUTHERLY LINE OF SAID TRACT RECORDED ON PAGE 114 TO A 1-1/2" DIA. ALUMINUM CAP MOUNTED ON A NO. 5x24" REBAR AND STAMPED PEALS 2395;
 THENCE S84°06'48"E, 272.87' TO A 1-1/2" DIA. ALUMINUM CAP MOUNTED ON A NO. 5x24" REBAR AND STAMPED PEALS 2395;
 THENCE CONTINUING S84°06'48"E, 884.00' TO A 1-1/2" DIA. ALUMINUM CAP ON A NO. 5x24" REBAR AND STAMPED PEALS 2395;
 THENCE S82°32'51"E, 343.54' TO A 1-1/2" DIA. ALUMINUM CAP MOUNTED ON A NO. 5x24" REBAR AND STAMPED PEALS 2395;
 THENCE N1°50'31"W, 858.07' TO A 1-1/2" DIA. ALUMINUM CAP MOUNTED ON A NO. 5x24" REBAR AND STAMPED PEALS 2457;
 THENCE S80°08'56"E, 2035.48' TO A 1/2" DIA. IRON ROD;
 THENCE N1°21'50"W, 239.73' TO A 1-1/2" DIA. ALUMINUM CAP MOUNTED ON A NO. 5x24" REBAR AND STAMPED PEALS 2395;
 THENCE N87°05'10"W, 818.67' TO A 1/2" DIA. IRON ROD;
 THENCE N87°51'49"W, 872.99' TO A 1-1/2" DIA. ALUMINUM CAP MOUNTED ON A NO. 5x24" REBAR AND STAMPED PEALS 2395;
 THENCE S82°41'41"W, 408.19' TO A 1-1/2" DIA. ALUMINUM CAP MOUNTED ON A NO. 5x24" REBAR AND STAMPED PEALS 2395;
 THENCE N34°18'18"W, 810.07' TO A 1-1/2" DIA. ALUMINUM CAP MOUNTED ON A NO. 5x24" REBAR AND STAMPED PEALS 2457;
 THENCE S89°04'00"W, 317.21' TO THE POINT OF BEGINNING.
 THE HEREIN DESCRIBED TRACT CONTAINS 48 ACRES, MORE OR LESS.
 TOTAL ACREAGE HEREIN DESCRIBED IS 238 ACRES MORE OR LESS.



APPROVALS
 APPROVED BY THE TOWN COUNCIL OF THE TOWN OF PINE HAVEN, WYOMING, THIS 12th DAY OF OCTOBER, 1994.
 MAYOR: *Velma Brandenburg*
 COUNCILMAN: *Mark Harwood*
 COUNCILMAN: *Pat Duffel-Lumme*
 REVIEWED BY THE COUNTY ATTORNEY OF CROOK COUNTY, WYOMING, THIS ___ DAY OF ___, 1994.
 JOSEPH M. BARNHART
 APPROVED BY THE COUNTY COMMISSION OF CROOK COUNTY, WYOMING, THIS ___ DAY OF ___, 1994.
 MAJOR MILLER
 RAYMOND DENNIS
 PERRY LIVINGSTON

STATE OF WYOMING)
 COUNTY OF CROOK) SS
 THE FOREGOING INSTRUMENT WAS ACKNOWLEDGED BEFORE ME BY VELMA BRANDBURG, MARK HARWOOD, DAN BLAKEMAN, AND PAT DUFFEL-LUMME, DATED THIS 12th DAY OF OCTOBER, 1994.
 WITNESS MY HAND AND OFFICIAL SEAL.
 COUNTY OF CROOK)
 STATE OF WYOMING)
 COUNTY OF CROOK) SS
 THE FOREGOING INSTRUMENT WAS ACKNOWLEDGED BEFORE ME BY MAJOR MILLER, RAYMOND DENNIS AND PERRY LIVINGSTON, DATED THIS ___ DAY OF ___, 1994.
 WITNESS MY HAND AND OFFICIAL SEAL.
 NOTARY PUBLIC
 MY COMMISSION EXPIRES _____

WITNESS MY HAND AND OFFICIAL SEAL.
 COUNTY OF CROOK)
 STATE OF WYOMING)
 COUNTY OF CROOK) SS
 THE FOREGOING INSTRUMENT WAS ACKNOWLEDGED BEFORE ME BY MAJOR MILLER, RAYMOND DENNIS AND PERRY LIVINGSTON, DATED THIS ___ DAY OF ___, 1994.
 WITNESS MY HAND AND OFFICIAL SEAL.
 NOTARY PUBLIC
 MY COMMISSION EXPIRES _____

#514808
 THIS PLAT WAS FILED OF RECORD IN THE OFFICE OF THE CLERK AND RECORDER AT 8:00 O'CLOCK A.M., THIS 16th DAY OF DECEMBER, 1994, AND IS DULY RECORDED IN FILE NO. 307, MAP NO. 1216. Eva G. Bush, Crook County Clerk by Carrie S. Schetter, Deputy.

RECORDED _____
 INDEXED _____
 ABSTRACTED _____

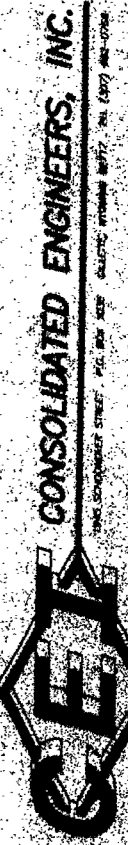
LEGEND
 LOT NUMBER
 BLOCK NUMBER
 SUBDIVISION BOUNDARY
 TOWN CORPORATE LIMITS
 SECTION LINES
 SECTION CORNER
 BOUNDARY OF DE-ANNEXATION

NOTE:
 THIS IS NOT A SURVEY PLAT, NOR INTENDED TO BE SUCH. IT IS FILED AS A REPRESENTATION OF THE RELATIVE POSITION OF THE PRESENT TOWN LIMITS AND THE SUBDIVISIONS WITHIN THE TOWN.

See Proposed Corporate Limits
 File 211 Map 192
 See Ordinance No. 4, 1991, 8/23/91

TOWNSITE PLAT
 TOWN OF PINE HAVEN, WYOMING

PREPARED FOR:
TOWN OF PINE HAVEN
 24 WATERS DRIVE
 PINE HAVEN, WYOMING 82721-9701
 PH (307) 566-9807



DATE	REVISION
NOV 20 1994	REV CO. 437

PROJECT	LN-1-PLD
CHECKED	BSB
DATE	JUNE 27, 1994
PROJECT	PINE HAVEN TOWNSITE
PROJECT NO.	211-C-1
FILE	PLAT (SEE TOWN CLERK)

SHEET NO.
1 of 1

106