

# A PLAT OF SHATTUCK HILLS

A SUBDIVISION OF THE NW 1/4 OF SEC. 32, S 1/2 SW 1/4 SW 1/4 SEC. 29, SW 1/4 SE 1/4 SW 1/4 SEC. 29, SW 1/4 NW 1/4 NE 1/4 SEC. 32, ALL IN TOWNSHIP 51 NORTH, RANGE 66 WEST, CROOK COUNTY, WYOMING

### CERTIFICATE OF SURVEYOR

STATE OF WYOMING  
COUNTY OF CROOK : ss

I, George G. Ross, of Spearfish, South Dakota, hereby certify that this Plat of Shattuck Hills was made from notes taken during an actual survey made under my direction by David Bowman, on various days from June, 1973, through March, 1974, and the subdivision has been accurately surveyed and the lots and roads are accurately staked off and marked. I also certify that such survey is accurately represented upon this plat.

*George G. Ross*  
Wyoming Land Surveyor No. 150

### APPROVAL BY THE COUNTY

The foregoing plat is hereby approved for filing by the undersigned Board of County Commissioners in and for the County of Crook, Wyoming, on this 8 day of May, 1974.

*Neal A. Gorman* Chairman  
*Joseph Saboda* Member  
*Tom F. Davis* Member

Recorded  
5/16/74  
#259055

KNOW ALL MEN BY THESE PRESENTS: That M. Joyce Palone, a widow, owner of the land, embraced in the Shattuck Hills Subdivision, Crook County, Wyoming, has caused said land to be platted and the dedication of roads to the public use is with the free consent and in accordance with the desires of the undersigned owner and proprietor of said lands, including release of all homestead rights in and to said premises.

IN WITNESS WHEREOF said owner has hereto signed her name this 8 day of May, 1974.

*M. Joyce Palone*

STATE OF WYOMING  
County of Crook ss.

The foregoing instrument was acknowledged before me this 8 day of May, 1974, by *M. Joyce Palone*

Witness my hand and official seal.

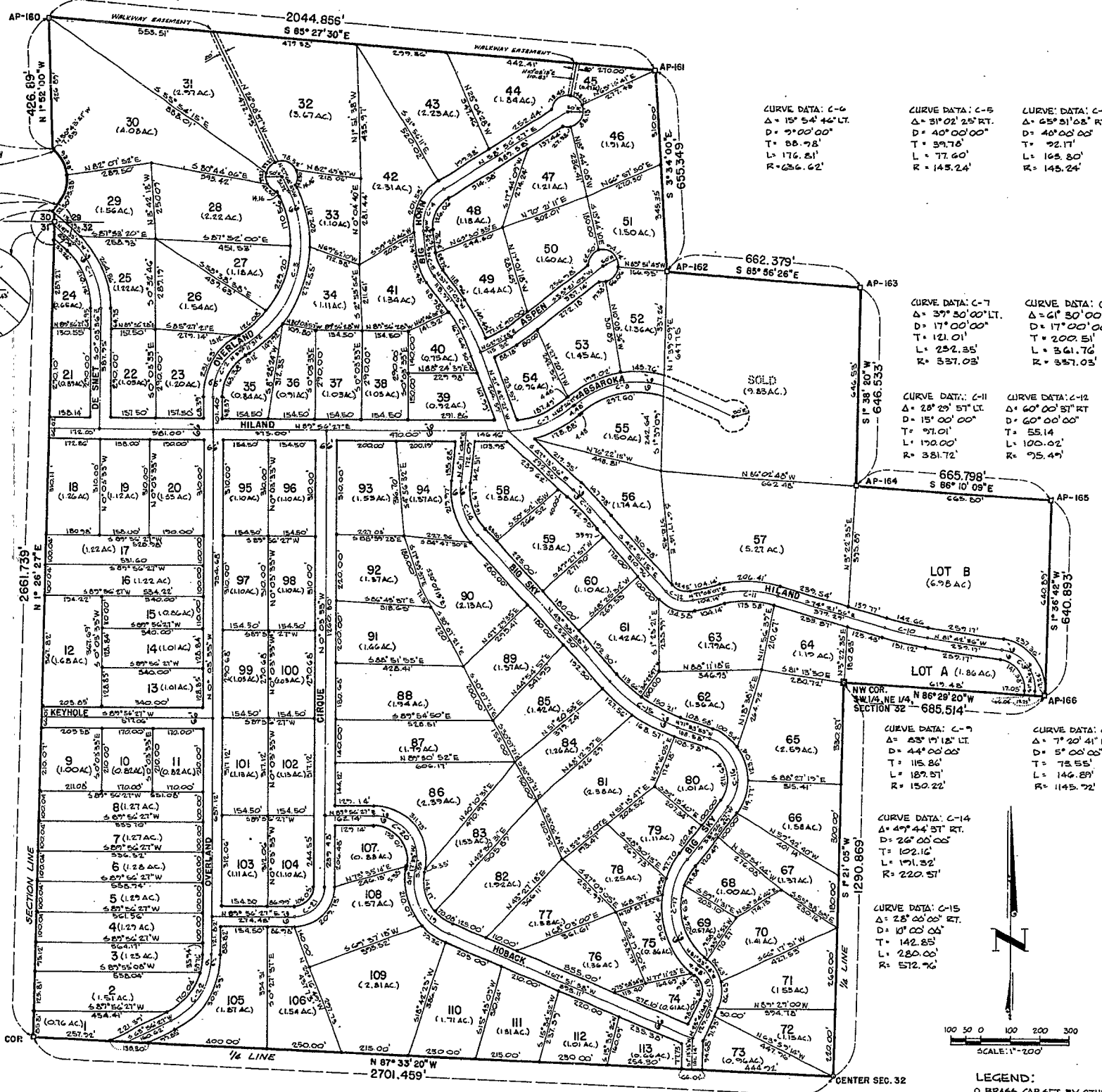
*Francis Hoyle*  
Notary Public Crook County Clerk

My Commission Expires: \_\_\_\_\_

Prepared for:  
SHATTUCK HILLS COMPANY  
BOX 6  
GILLETTE, WYOMING 82716

Prepared by:  
BRADY CONSULTANTS INC.  
BOX A  
SPEARFISH, SOUTH DAKOTA  
PROJECT NO: HD-24

TOTAL ACRES IN LOTS 172.88  
TOTAL ACRES IN ROADS 24.87  
TOTAL ACRES IN SUBDIVISION 197.75



CURVE DATA: C-4  
Δ = 15° 54' 46" LT.  
D = 9° 00' 00"  
T = 58.78'  
L = 176.81'  
R = 256.62'

CURVE DATA: C-5  
Δ = 31° 02' 25" RT.  
D = 40° 00' 00"  
T = 59.78'  
L = 77.60'  
R = 143.24'

CURVE DATA: C-4  
Δ = 65° 31' 08" RT.  
D = 40° 00' 00"  
T = 92.17'  
L = 168.80'  
R = 143.24'

CURVE DATA: C-7  
Δ = 37° 30' 00" LT.  
D = 17° 00' 00"  
T = 121.01'  
L = 232.85'  
R = 537.03'

CURVE DATA: C-8  
Δ = 41° 30' 00" RT.  
D = 17° 00' 00"  
T = 200.51'  
L = 361.76'  
R = 557.03'

CURVE DATA: C-11  
Δ = 28° 29' 51" LT.  
D = 15° 00' 00"  
T = 91.01'  
L = 170.00'  
R = 381.72'

CURVE DATA: C-12  
Δ = 60° 00' 31" RT.  
D = 60° 00' 00"  
T = 55.14'  
L = 100.02'  
R = 95.49'

CURVE DATA: C-13  
Δ = 4° 21' 55" LT.  
D = 3° 00' 00"  
T = 72.77'  
L = 145.46'  
R = 1709.86'

CURVE DATA: C-9  
Δ = 53° 17' 18" LT.  
D = 44° 00' 00"  
T = 115.86'  
L = 187.51'  
R = 150.22'

CURVE DATA: C-10  
Δ = 7° 20' 41" RT.  
D = 5° 00' 00"  
T = 75.55'  
L = 146.89'  
R = 1145.72'

CURVE DATA: C-14  
Δ = 47° 44' 51" RT.  
D = 26° 00' 00"  
T = 102.16'  
L = 191.32'  
R = 220.51'

CURVE DATA: C-15  
Δ = 28° 00' 00" RT.  
D = 10° 00' 00"  
T = 142.85'  
L = 280.00'  
R = 572.76'

CURVE DATA: C-22  
Δ = 64° 00' 00" RT.  
D = 24° 00' 00"  
T = 147.18'  
L = 266.01'  
R = 236.73'

CURVE DATA: C-21  
Δ = 90° 00' 00" LT.  
D = 57° 00' 00"  
T = 100.52'  
L = 157.70'  
R = 100.52'

CURVE DATA: C-20  
Δ = 101° 21' 08" RT.  
D = 40° 00' 00"  
T = 174.86'  
L = 258.38'  
R = 143.24'

CURVE DATA: C-19  
Δ = 77° 07' 15" LT.  
D = 36° 00' 00"  
T = 157.87'  
L = 243.85'  
R = 170.77'

CURVE DATA: C-18  
Δ = 71° 15' 18" LT.  
D = 60° 00' 00"  
T = 76.31'  
L = 125.76'  
R = 75.49'

CURVE DATA: C-17  
Δ = 70° 00' 00" RT.  
D = 23° 00' 00"  
T = 249.11'  
L = 391.30'  
R = 249.11'

CURVE DATA: C-16  
Δ = 110° 00' 00" LT.  
D = 40° 00' 00"  
T = 204.57'  
L = 275.00'  
R = 143.24'

LEGEND:  
○ BRASS CAP SET BY OTHERS  
□ U.S. GOVERNMENT BRASS CAP  
■ IRON PIPE SET THIS SURVEY  
■ IRON PIPE SET BY OTHERS

125  
121