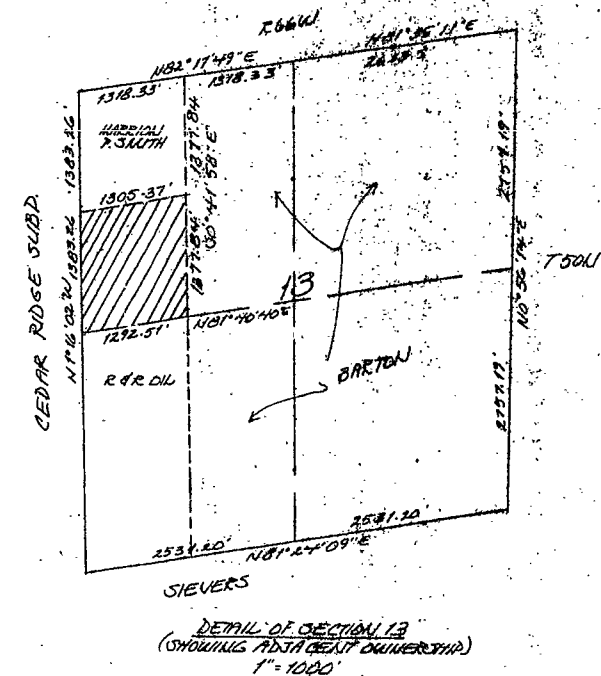
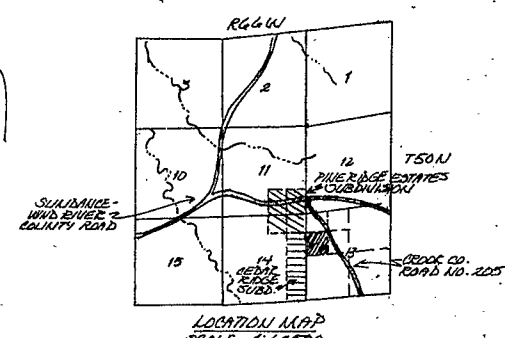
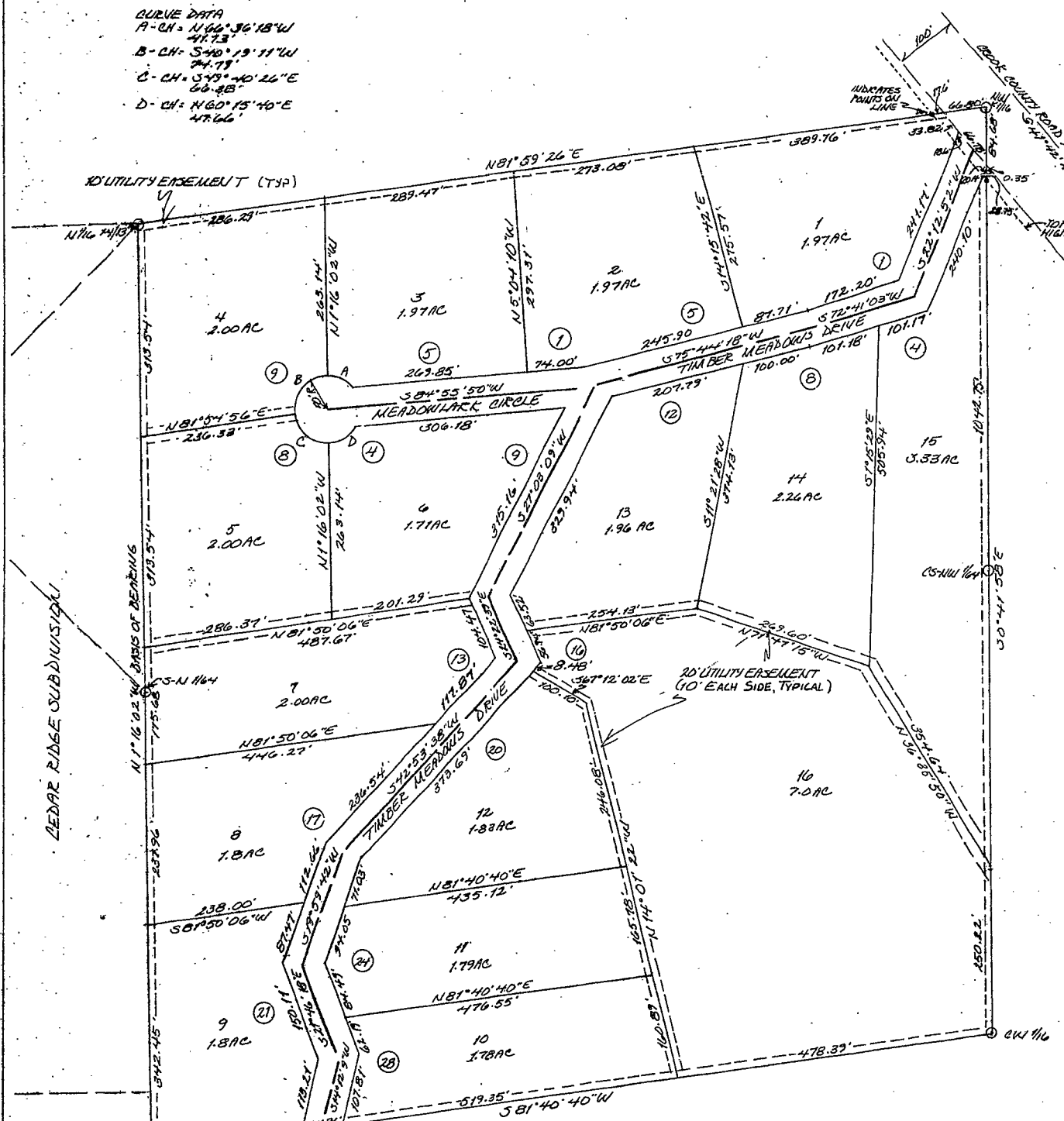


CURVE DATA  
 A - CH: N 66° 36' 18" W  
 41.73'  
 B - CH: S 40° 19' 11" W  
 74.79'  
 C - CH: S 49° 40' 26" E  
 66.85'  
 D - CH: N 60° 15' 40" E  
 47.66'



**LEGEND**  
 ○ 2" DIAMETER ALUMINUM CAP STAMPED AS PER DLM MANUAL OF INSTRUCTIONS  
 ⊙ INDICATES RURAL ADDRESS NUMBER  
 NOTE: ALL LOT CORNERS ARE MONUMENTED WITH A 2" DIAMETER ALUMINUM CAP MOUNTED ON A 1/2" X 4" X 4" PLATE & STAMPED R.L.S. 436-4, UNLESS OTHERWISE SHOWN.

**LEGAL DESCRIPTION**  
 THE SOUTHWEST 1/4 OF THE NORTHWEST 1/4 OF SECTION 13, T50N, R66W, OF THE SIXTH P.M., CROOK COUNTY, WYOMING.

**CERTIFICATE OF SURVEYOR**  
 STATE OF WYOMING, ss COUNTY OF CROOK,  
 I, JOSEPH L. FEELEY, OF SUNDANCE, CROOK COUNTY, WYOMING, HEREBY CERTIFY THAT THIS MAP WAS DRAWN FROM NOTES TAKEN DURING AN ACTUAL SURVEY DONE BY ME DURING JULY, 1983, AND THAT THAT SURVEY IS ACCURATELY SHOWN HEREOF.  
 Joseph L. Feeley  
 JOSEPH L. FEELEY R.L.S. 436-4

**APPROVAL BY CROOK COUNTY BOARD OF COMMISSIONERS**  
 THE PLATING OF THE PROPOSED TIMBER MEADOWS SUBDIVISION IN CROOK COUNTY, WYOMING, AS SHOWN HEREOF, IS APPROVED BY THE BOARD OF COUNTY COMMISSIONERS OF CROOK COUNTY, WYOMING, ON THIS DAY OF September, 1983.

James H. Harwood  
 Commissioner  
 John G. Miller  
 Commissioner  
 Ruth E. Davidson  
 Commissioner

NO PUBLIC WATER SUPPLY  
 NO PUBLIC SEWAGE SYSTEM  
 NO GARBAGE DISPOSAL  
 NO STREET MAINTENANCE  
 - James Harwood  
 1st Mon. Jan. 1991

**EASEMENTS**  
 EASEMENTS ARE HEREBY DEDICATED TO PUBLIC USE, THE LOCATION AND WIDTH OF WHICH IS SHOWN IN DASHED LINE ON THE ACCOMPANYING PLAT, AND SAID EASEMENTS MAY BE EMPLOYED IN PERFORMANCE AS A COVENANT RUNNING WITH THE LAND FOR THE PURPOSE OF INSTALLING, REPAIRING, RECONSTRUCTING, REPLACING AND MAINTAINING SEWER LINES, WATER LINES AND OTHER TRENCHES AND TYPES OF PUBLIC UTILITIES NOW OR HEREIN AFTER BEING GENERALLY UTILIZED BY THE PUBLIC. ALL EASEMENTS ARE 10 FEET WIDE UNLESS OTHERWISE NOTED.

**DEDICATION**  
 THE HEREON DESCRIBED PLATING OF THE TIMBER MEADOWS SUBDIVISION IN CROOK COUNTY, WYOMING, AS APPEARS ON THIS PLAT, IS WITH THE FREE CONSENT AND IN ACCORDANCE WITH THE DESIRES OF THE UNDERSIGNED OWNERS, THE UNDERSIGNED OWNERS DO HEREBY RELEASE AND WAIVE ALL RIGHTS UNDER AND BY VIRTUE OF THE HOMESTEAD EXEMPTION LAWS OF THE STATE OF WYOMING, STREETS SHOWN ON THIS PLAT AND NOT HERETOFORE DEDICATED TO PUBLIC USE ARE HEREBY SO DEDICATED.

LOUIS T. TODEL  
 DONNA LEE TODEL  
 THE FOREGOING INSTRUMENT WAS ACKNOWLEDGED BEFORE ME BY SAID PARTIES ON this 14th DAY OF July, 1983.  
 Notary Public  
 MY COMMISSION EXPIRES July 19, 1997

**FINAL PLAT OF TIMBER MEADOWS SUBDIVISION**

S.W. 1/4 Sec 14  
 SECTION 13  
 T50N, R66W  
 OF THE 6TH P.M.  
 CROOK COUNTY, WYOMING

DEVELOPERS  
 LOUIS & DONNA LEE TODEL  
 GILLETTE, WYOMING

PREPARED BY  
 BEARLORSE ENGINEERING  
 BOX 60  
 SUNDANCE, WYOMING  
 82725

Filed 8:15  
 September 7, 1983  
 P.S.F. 2  
 426712

143