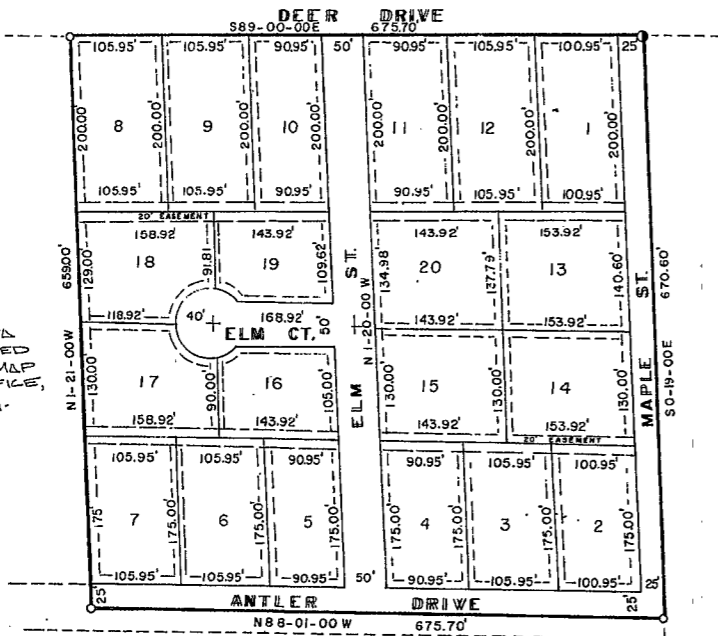
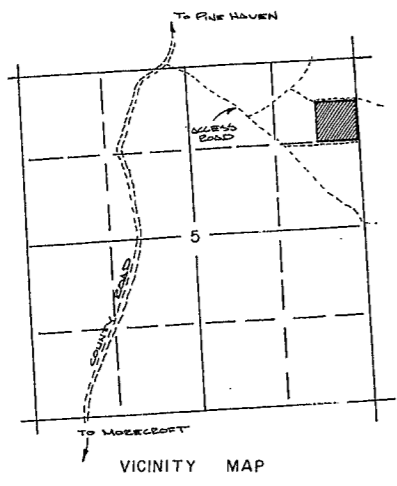


AMENDED PLAT
OF
WOODLAND ACRES
SE, NE, NE, SEC. 5, T50N, R66W
CROOK CO., WYO.



NOTE
FOR INFORMATION ON ACCESS
ROADS SEE THE 'GLENN VISTA
ESTATES' PLAT AS RECORDED
IN FOLDER 2, FOLDER 2, MAP
CASE, COUNTY CLERK'S OFFICE,
CROOK COUNTY, WYOMING.



SCALE 1" = 100'

NO PUBLIC GARBAGE SYSTEM
NO PUBLIC SEWER DISPOSAL SYSTEM
NO COUNTY MAINTENANCE OF ROADS

Frank & Olive Ray P. 19; Nicholas Stricker 1;
Jeanne & Burr Rading 14; Mountain Gravel 11; Glenn
Capeland 18 & 19; Kay & Shirley Driehl 7 & Robert
& Dorothy Updike 2, 3, 4, 5, 6, 7, 8, 9, 10, 11, 12, 13, 14, 15, 16, 17, 20.
15th Sept
x Olive Ray x Frank Ray x Nicholas Stricker
x Jeanne Rading x Burr Rading
x Kay & Shirley Driehl x Robert Driehl
x Dorothy Updike x Kay Driehl x Dorothy Updike

September 19 15th
Lorne J. Driehl
1-22-80

IMPROVEMENT AND SERVICE DIST.
September 29 15th
Frank H. Howard president O.R.C. Western W.Y.
John J. Nap. Sec. - same.

April 10
John Stricker
Thomas C. Jones
W. D. Driehl

400277

April 22
Paul E. Davidson

[Handwritten signature]

551

DAVIS
SURVEYING

610 BUTLER SP.
GILLETTE WYO.
682-5938

8-21-79