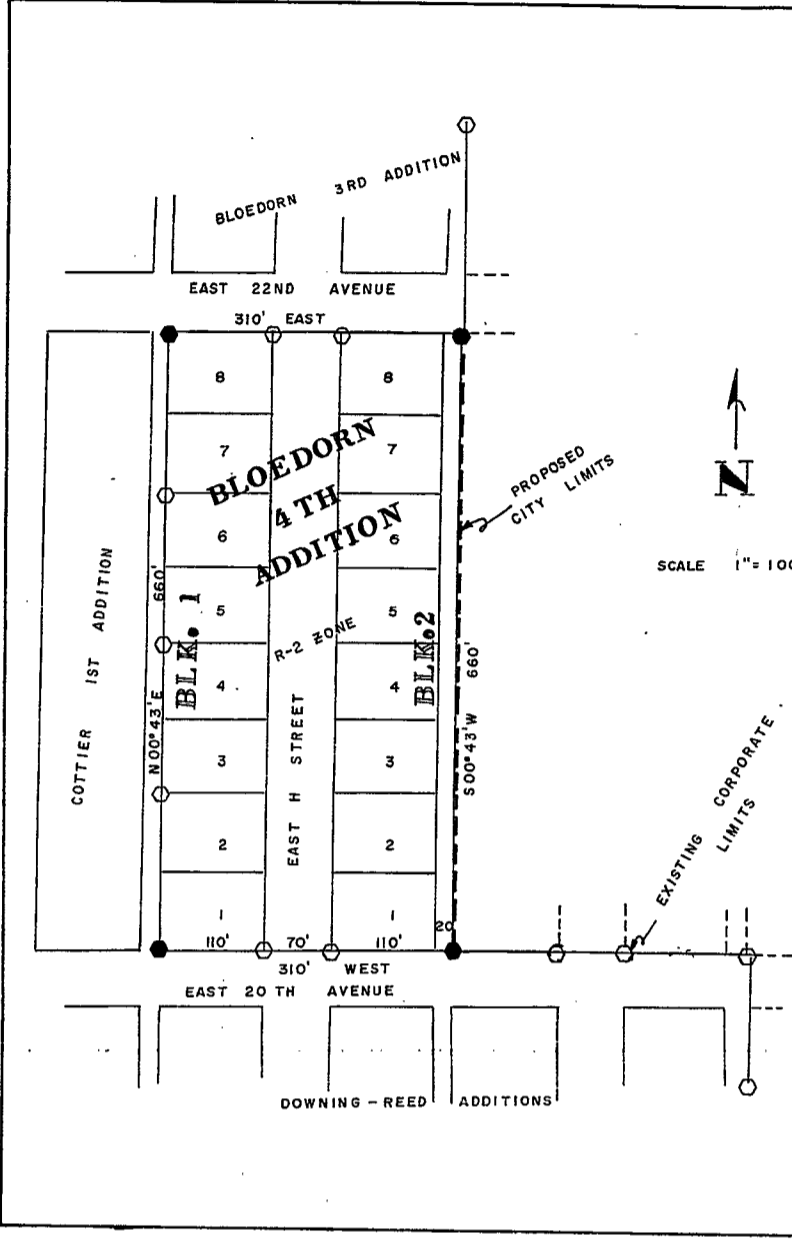


MAP TO ACCOMPANY
PETITION FOR ANNEXATION

THAT PART OF THE ~~1/4~~ SECTION 10, T24N, R61W, 6TH P.M., GOSHEN COUNTY WYOMING, MORE PARTICULARLY DESCRIBED AS FOLLOWS:

BEGINNING AT A POINT ON THE SOUTH BOUNDARY OF EAST 22ND AVENUE, BEING EAST, A DISTANCE OF 130 FEET FROM THE INTERSECTION OF THE SOUTH BOUNDARY OF EAST 22ND AVENUE AND THE EAST BOUNDARY OF EAST H STREET, TOWN OF TORRINGTON, WYOMING; THENCE S00°43'W, A DISTANCE OF 660 FEET TO A POINT ON THE NORTH BOUNDARY OF EAST 20TH AVENUE; THENCE ALONG THE NORTH BOUNDARY OF EAST 20TH AVENUE AND THE EXISTING CORPORATE LIMITS OF THE TOWN OF TORRINGTON, WYOMING, WEST, A DISTANCE OF 310 FEET; THENCE ALONG SAID PRESENT CORPORATE LIMITS AND ALONG THE EAST BOUNDARY OF A DEDICATED ALLEY, N00°43'E, A DISTANCE OF 660 FEET TO A POINT ON THE SOUTH BOUNDARY OF EAST 22ND AVENUE; THENCE ALONG THE SOUTH BOUNDARY OF EAST 22ND AVENUE AND THE EXISTING CORPORATE LIMITS OF THE TOWN OF TORRINGTON, WYOMING EAST, A DISTANCE OF 310 FEET TO THE POINT OF BEGINNING, SAID PARCEL CONTAINS 4.70 ACRES, MORE OR LESS.



SCALE 1" = 100'

WYOMING P.E. & L.S. NO. 677

Donald R. Horton
SURVEYOR

BOOKED
INDEXED
ABSTRACTED
MICROFILMED
Goshen County

STATE OF WYOMING
COUNTY OF GOSHEN 650837
FILED 11/12/20 10:21
BOOK 158
11/12/20 9:35 AM

BLOEDORN 4TH ADDITION

TORRINGTON, WYOMING