

HIGHWAY R-O-W MARKERS
FOUND AT STATION 221+00

HIGHWAY R-O-W LINE

NW CORNER RYMILL ADDITION

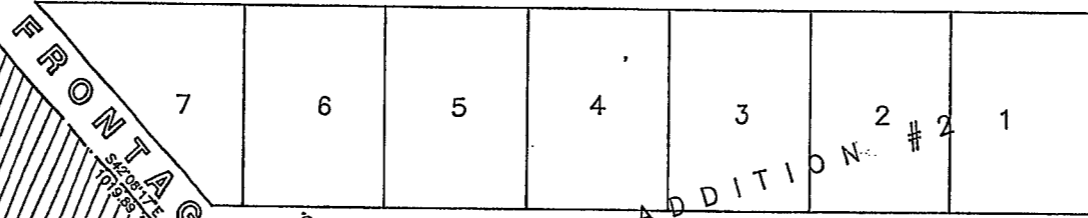
10

CORPORATE LIMITS

RYMILL ADDITION

OTIS STREET

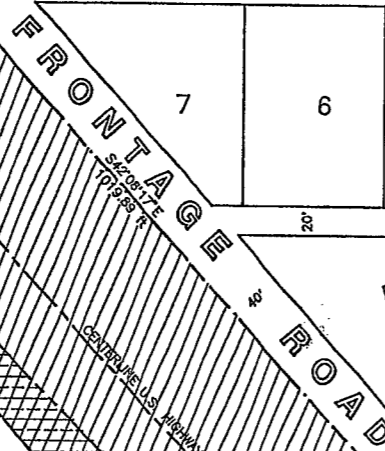
OTIS



RYMILL

BLISS STREET

BLISS



AREA OF ANNEXATION (5.3238 ACRES)

ALL OF THIS TRACT EXCEPT FOR THE HAMILTON TRACT IS CONTROLLED BY THE BURLINGTON NORTHERN RAILROAD OR WYOMING TRANSPORTATION DEPARTMENT. BOOK 321, PAGE 300

VINCE FORD BOOK 539, PAGE 46

Δ = 9°25'21"
T = 110.65'
R = 1342.62'
L = 220.83'
CH = 220.83'
CH BRG = S46°50'18"E

H = 22'24"
Spl = 264.00'
R = 5708.59'
T = 1262.63'

HIGHWAY EASEMENT
CHICAGO, BURLINGTON, AND
QUINCY RAILROAD COMPANY
(BURLINGTON NORTHERN)
TO STATE OF WYOMING HIGHWAY
EASEMENT APRIL, 1968 DELINEATED
ON RAILROAD PLAN 1171-38

JOHN HAMILTON AND
BETTY HAMILTON
BOOK 362, PAGE 30

PROPOSED EXTENDED
CORPORATE LIMITS

LEGEND

- WYOMING TRANSPORTATION DEPARTMENT R-O-W
- RAIL ROAD R-O-W
- PRESENT CORPORATE LIMITS
- PROPOSED CORPORATE LIMITS
- FOUND 6"x 6" WID R-O-W MARKER

*NOTE: HIGHWAY R-O-W LINES SHOWN
HEREON ARE BASED UPON THE
ACTUAL LOCATION OF R-O-W
MARKERS FOUND DURING THIS
SURVEY.

NW CORNER
FRONTIER
ADDITION

6
5
4
3
FRONTIER
ADDITION

10
5
6
3

BLOCK 3

1
2
3
4

AVENUE

18
17
16
15

CUSTER

1
2
3
4
5
6

BROOKE

18
17
16
15
14
13

BLISS

1
2
3
4
5
6

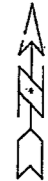
FIRST

18
17
16
15
14
13

CUSTER

Tract I
SURVEYOR'S CERTIFICATE

I, ROBERT W. TAYLOR OF EASTERN WYOMING ENGINEERING AND SURVEYING PROFESSIONALS OF TORRINGTON, WYOMING, HEREBY CERTIFY THAT THIS MAP WAS PREPARED FROM NOTES TAKEN DURING AN ACTUAL FIELD SURVEY IN AUGUST OF 1993 AND THAT THE INFORMATION HEREON IS CORRECTLY REPRESENTATIVE TO THE BEST OF MY KNOWLEDGE.



SCALE: 1" = 60'
0' 30' 60' 90' 120'

ALL BEARINGS ON THIS MAP ARE BASED ON THE NORTH - SOUTH STREET BEING NORTH & SOUTH AND THE EAST - WEST STREETS BEING EAST & WEST

785C06
STATE OF WYOMING
COUNTY OF GOSHEN
RECORDED 2-10-94
BY STATE OF WYOMING
60677 WAB/STJ
WENDELL B. CHAPMAN, C.E.
GOSHEN COUNTY CLERK

MAP TO ACCOMPANY PETITION FOR
ANNEXATION - WEST ANNEXATION

TOWN OF FT. LARAMIE ANNEXATION
WEST ANNEXATION
S 1/2 NE 1/4 SECTION 22, T26N, R64W
GOSHEN COUNTY, WYOMING

RECORD OF SURVEY
EASTERN WYOMING ENGINEERING
& SURVEYING PROFESSIONALS
2510 WEST C STREET, P.O. BOX 99
TORRINGTON, WYOMING 82240
(307) 532-3811

DRAWN BY: E BROOKS SCALE: 1"=60' FILE: WESTANNX.dwg
CHECKED BY: RWT PROJECT NO.: 50-660191
DATE: JUNE 14, 1994 SHEET 1 OF 1

254