

WYOMING STATE SECONDARY HIGHWAY NO. 0809

CERTIFICATE OF SURVEYOR

I, J.H. Coffman, of Torrington, Wyoming, hereby certify that this map was made from notes taken during actual surveys made under my supervision during June, 1961; July, 1962; and July, 1968. I further certify that No. 5X18" rebars with aluminum caps stamped with the proper designation number, were driven flush with the ground for all lots in SECTION A, blocks 1 to 14 inclusive and in SECTION B blocks 1 to 24 inclusive.

J.H. Coffman  
Civil Engineer - Land Surveyor

Wyo. Reg. No. P.E.-L.S. 529.

Found original 1/2" x 24" pipe corner disturbed (bent). Replaced it w/ No. 5X18" rebar w/ aluminum cap stamped.



Note: Un-marked graves were found in this area.

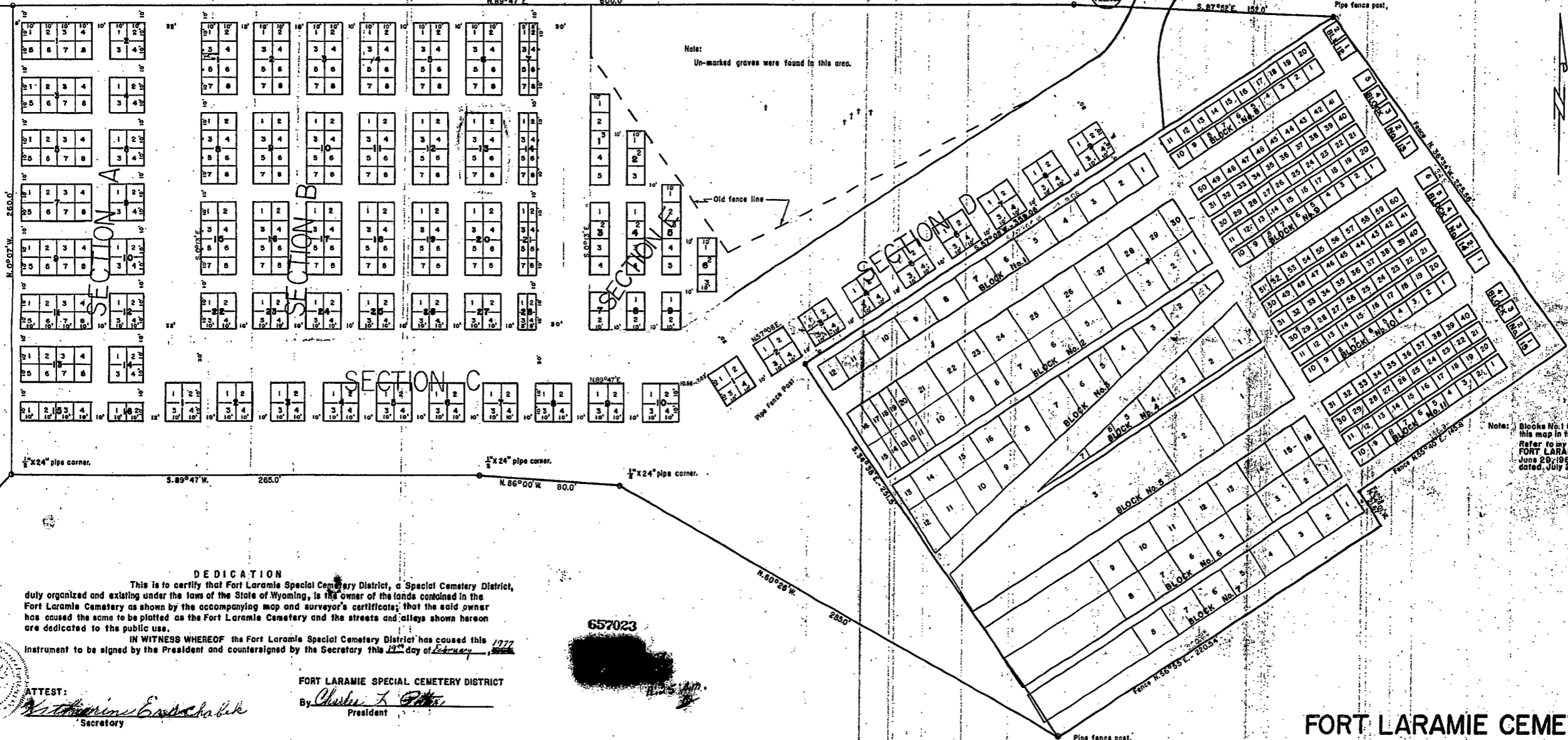
Scale 1" = 30'

Original 1/2" x 24" pipe corner obliterated. Found 2" brass cap stamped.



Note: Irrigation ditch not shown. Its location is being negotiated.

Note: Blocks No. 1 through No. 15 are shown on this map in their approximate position. Refer to my maps titled PLAT OF FORT LARAMIE CEMETERY dated June 29, 1962 and RECORD OF SURVEY dated July 26, 1962.



DEDICATION

This is to certify that Fort Laramie Special Cemetery District, a Special Cemetery District, duly organized and existing under the laws of the State of Wyoming, is the owner of the lands contained in the Fort Laramie Cemetery as shown by the accompanying map and surveyor's certificate; that the said owner has caused the same to be platted as the Fort Laramie Cemetery and the streets and alleys shown hereon are dedicated to the public use.

IN WITNESS WHEREOF the Fort Laramie Special Cemetery District has caused this instrument to be signed by the President and countersigned by the Secretary this 14th day of February, 1977.

FORT LARAMIE SPECIAL CEMETERY DISTRICT

By Charles F. [Signature]  
President

ATTEST:  
[Signature]  
Secretary

STATE OF WYOMING }  
COUNTY OF GOSHEN } SS.

Acknowledged before me this 14th day of Feb. 1977

[Signature]  
Notary Public

My Commission expires \_\_\_\_\_

657023

The foregoing Plat of Fort Laramie Cemetery is hereby approved this 6th day of February, 1968, 1977

BOARD OF COUNTY COMMISSIONERS  
GOSHEN COUNTY, WYOMING

By [Signature]  
Chairman

ATTEST:  
[Signature]  
County Clerk

FORT LARAMIE CEMETERY

SW 1/4 Sec. 21, T. 26N., R. 64W.  
GOSHEN COUNTY, WYOMING.

161