

SURVEYOR'S CERTIFICATE

STATE OF WYOMING)
COUNTY OF GOSHEM)

I, ROBERT W. TAYLOR OF EASTERN WYOMING ENGINEERING AND SURVEYING PROFESSIONALS OF TOWNINGTON, WYOMING, DO HEREBY CERTIFY THAT THIS PLAN OF HUNTLEY SCHOOL SUBDIVISION WAS MADE FROM NOTES TAKEN DURING AN ACTUAL FIELD SURVEY IN JUNE OF 1990, AND THAT IT CORRECTLY SHOWS THE LOTS, ROADS, AND EASEMENTS SHOWN HEREON WHICH ARE TO BE MONUMENTED ON THE GROUND WITH 5/8" REBAR WITH PLASTIC CAPS MARKED P.L.S. NO. 3891 AS SHOWN HEREON WITHIN SIXTY DAYS OF THE PLANNING COMMISSION'S RECOMMENDATION OF APPROVAL OF THE FINAL PLAN IN ACCORDANCE WITH THE GOSHEM COUNTY SUBDIVISION REGULATIONS AND THAT THE LOTS ENRACED IN THIS SUBDIVISION ARE THAT PART OF THE N1/2 NW1/4 OF SECTION 36, TOWNSHIP 23 NORTH, RANGE 61 WEST OF THE 6TH PRINCIPAL MERIDIAN, GOSHEM COUNTY, WYOMING, BEING MORE PARTICULARLY DESCRIBED AS FOLLOWS:

BEGINNING AT THE NORTHWEST CORNER OF SECTION 36, T23N, R61W, MONUMENTED BY AN IRON BAR DRIVEN FLUSH IN ASPHALT IN THE INTERSECTION OF COUNTY ROAD NO. 295 AND STATE SECONDARY NO. 161; THENCE S00°11'58"E, ALONG THE WEST BOUNDARY OF SECTION 36, A DISTANCE OF 660.00 FEET TO A 1/2" X 2" REBAR DRIVEN APPROXIMATELY 6" BELOW THE SURFACE OF COUNTY ROAD; THENCE S89°53'52"E, ALONG A LINE PARALLEL WITH THE NORTH BOUNDARY OF THE NORTHWEST QUARTER OF SECTION 36, A DISTANCE OF 33.00 FEET TO A 1/2" X 2" REBAR WITH ALUMINUM CAP MARKED P.L.S. NO. 3511, SET AS A WITNESS CORNER; THENCE CONTINUING S89°53'52"E, ALONG A LINE PARALLEL WITH THE AFOREMENTIONED NORTH BOUNDARY OF THE NORTHWEST QUARTER OF SECTION 36, A DISTANCE OF 1287.00 FEET TO A 1/2" X 2" REBAR WITH ALUMINUM CAP MARKED P.L.S. NO. 3511; THENCE N00°11'58"W, ALONG A LINE PARALLEL WITH THE WEST BOUNDARY OF THE NORTHWEST QUARTER OF SECTION 36, A DISTANCE OF 610.00 FEET TO A 1/2" X 2" REBAR WITH ALUMINUM CAP MARKED P.L.S. NO. 3511, SET AS A WITNESS CORNER; THENCE CONTINUING N00°11'58"W, ALONG A LINE PARALLEL WITH THE AFOREMENTIONED WEST BOUNDARY OF THE NORTHWEST QUARTER OF SECTION 36, A DISTANCE OF 50.00 FEET TO A P-X NAIL WITH ALUMINUM DISC MARKED P.L.S. NO. 3891; THENCE N89°53'52"W, ALONG THE NORTH BOUNDARY OF THE NORTHWEST QUARTER OF SECTION 36, A DISTANCE OF 1320.00 FEET TO THE POINT OF BEGINNING.

WITH ABOVE DESCRIBED TRACT OF LAND CONTAINING 50.00 ACRES MORE OR LESS AND WITH ALL BEARINGS ON THIS PLAN BEING ASTROLOGICALLY BASED ON A 5" COLLIMATED LEVEL TAKEN AT THE SW CORNER OF THE HUNTLEY SCHOOL SUBDIVISION, AND ARE MADE RELATIVE TO THE ADJACENT SURVEYING METHODS.

Robert W. Taylor
Surveyor

DEDICATION

KNOW ALL MEN BY THESE PRESENTS THAT THE GOSHEM COUNTY UNIFIED SCHOOL DISTRICT NO. 1 IS THE OWNER IN THE SIMPLE OF THE LANDS ENRACED OF THIS PLAN AND IN THE ABOVE DESCRIPTION OF THE HUNTLEY SCHOOL SUBDIVISION AND DO HEREBY DECLARE THE SUBDIVISION TO BE ITS TRACT AND DEED, AND DEDICATE TO THE USE OF THE PUBLIC THE EASEMENTS AND ROADS SHOWN HEREON.

Dorinda Munsell
CHAIRPERSON OF THE BOARD
GOSHEM COUNTY UNIFIED SCHOOL DISTRICT NO. 1

William J. ...
CLERK OF THE BOARD

ACKNOWLEDGEMENT

STATE OF WYOMING)
COUNTY OF GOSHEM)

THE FOREGOING DEDICATION FOR HUNTLEY SCHOOL SUBDIVISION WAS ACKNOWLEDGED BEFORE ME BY DORINDA MUNSSELL, CHAIRPERSON OF THE GOSHEM COUNTY UNIFIED SCHOOL DISTRICT NO. 1 BOARD, ON THIS 27th DAY OF OCTOBER, 1990. IN WITNESS WHEREOF, I HAVE HEREUNTO SET MY HAND AND AFFIX THE SEAL OF MY OFFICE THE DAY AND YEAR HEREIN WRITTEN ABOVE.

Robert W. Taylor
NOTARY PUBLIC
MY COMMISSION EXPIRES ON DEC. 20, 1992

APPROVAL

Planning Commission:

THIS PLAN OF HUNTLEY SCHOOL SUBDIVISION HAS BEEN SUBMITTED AND APPROVED BY THE PLANNING COMMISSION OF GOSHEM COUNTY IN ITS AUTHORIZED ADVISORY CAPACITY TO THE GOVERNING BODY AT THE REGULAR SCHEDULED MEETING OF THE 13th DAY OF Sept, 1990.

Melvin R. Eaton
SECRETARY

Michael J. ...
CHAIRMAN OF THE BOARD

DATE: 10-31-90

County Commissioners:

THE FOREGOING PLAN OF HUNTLEY SCHOOL SUBDIVISION, GOSHEM COUNTY, WYOMING, IS HEREBY APPROVED THIS 2nd DAY OF November, 1990.

James S. ...
COUNTY CLERK

M. P. ...
CHAIRMAN OF THE BOARD

County Engineer:

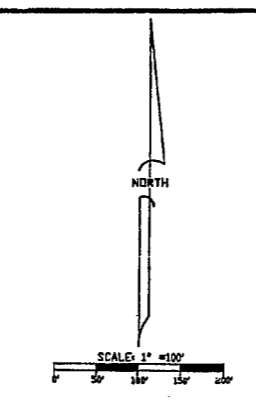
THE PROPOSED GENERAL PLAN OF HUNTLEY SCHOOL SUBDIVISION AS SPECIALLY REVISION IS HEREBY APPROVED BY THE GOSHEM COUNTY ENGINEER.

Jack ...

CERTIFICATE OF EXECUTION

ALL REQUIRED DOCUMENTS, PARTY FEES, AND NOTICES HAVE BEEN FULLY RECEIVED AND DISTRIBUTED BY THE OFFICE OF THE PLANNING DIRECTOR FOR GOSHEM COUNTY, WYOMING.

DATE: 1 Nov 90
Melvin R. Eaton
PLANNING DIRECTOR

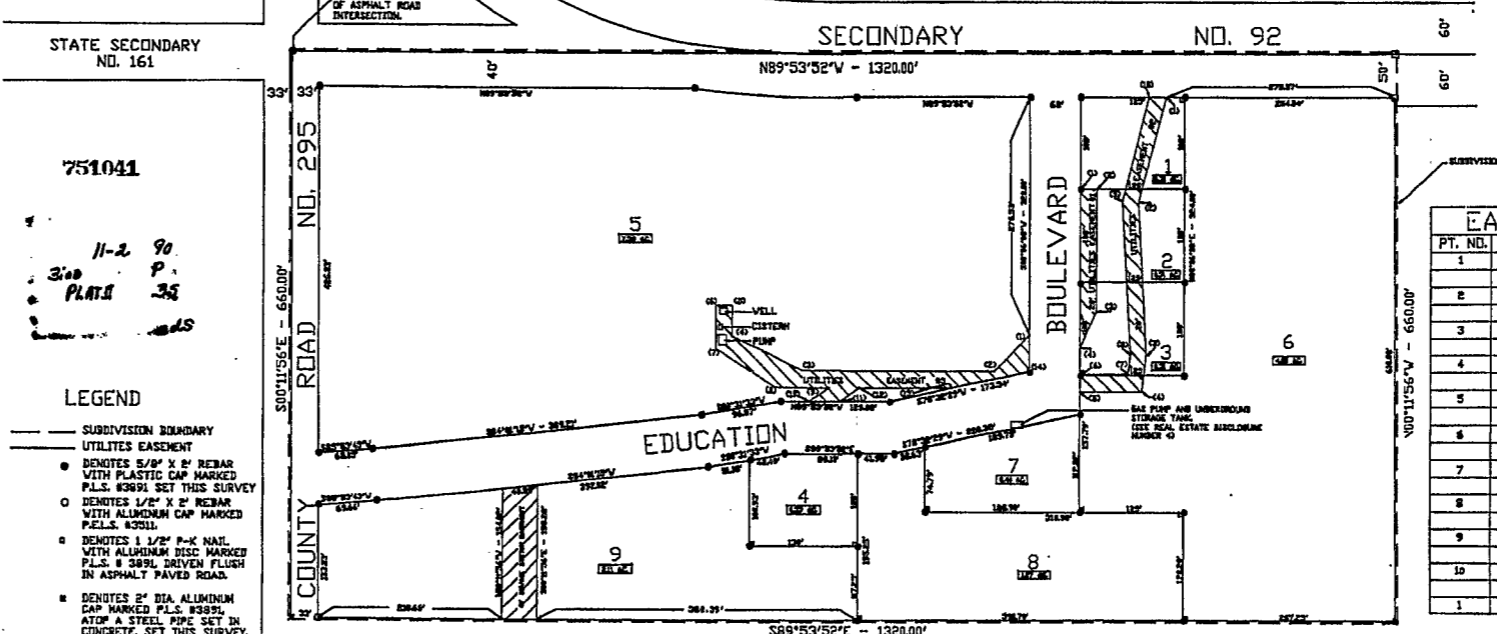


EASEMENT #1

PT. NO.	BEARINGS	DISTANCE
1	S89°53'52"E	20.00'
2	S00°06'08"W	141.73'
3	S89°12'16"W	47.14'
4	N00°06'08"E	184.48'

EASEMENT #3

PT. NO.	BEARINGS	DISTANCE	PT. NO.	BEARINGS	DISTANCE
1	S44°09'23.1"W	68.45'	8	S89°42'04.3"E	63.39'
2	N89°49'27.4"W	230.13'	9	S57°53'43.5"W	23.38'
3	N64°27'34.1"W	93.51'	10	S89°03'04"E	97.39'
4	NORTH	30.32'	11	N67°53'01.4"E	23.31'
5	WEST	20.00'	12	S89°49'13.9"E	183.79'
6	SOUTH	49.64'	13	N78°32'29"E	96.10'
7	S57°34'38.3"E	85.82'	14	N00°06'08"E	43.47'
8			1		



EASEMENT #2

PT. NO.	BEARINGS	DISTANCE
1	S15°23'12.5"W	128.24'
2	S03°19'27.8"E	177.41'
3	S07°30'00.9"W	41.64'
4	S89°45'15"W	74.91'
5	N00°06'08"E	20.00'
6	N89°45'15"E	57.32'
7	N07°30'00.9"E	82.30'
8	N63°19'27.8"W	178.81'
9	N13°23'13.5"E	126.07'
10	S89°03'04"E	20.73'
1		

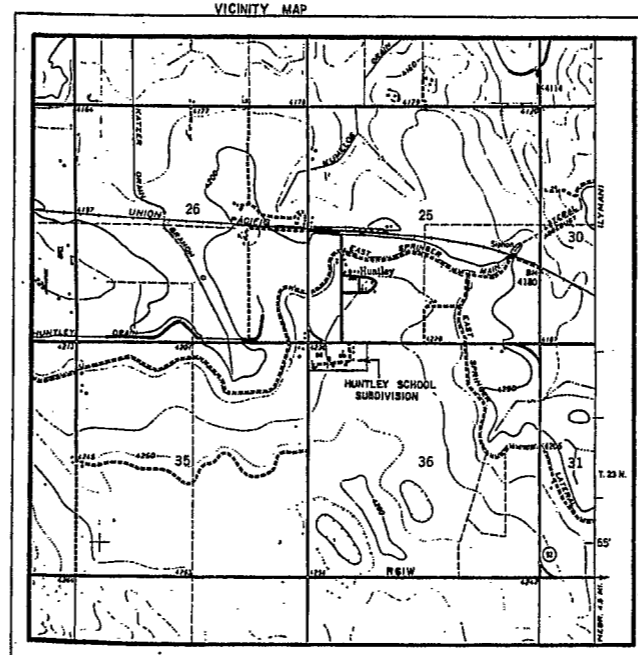
- LEGEND**
- SUBDIVISION BOUNDARY
 - UTILITIES EASEMENT
 - DENOTES 5/8" X 2" REBAR WITH PLASTIC CAP MARKED P.L.S. #3891 SET THIS SURVEY
 - DENOTES 1/2" X 2" REBAR WITH ALUMINUM CAP MARKED P.L.S. #3511
 - DENOTES 1/2" P-X NAIL WITH ALUMINUM DISC MARKED P.L.S. #3891
 - DENOTES 2" DIA ALUMINUM CAP MARKED P.L.S. #3891, ATOP A STEEL PIPE SET IN CONCRETE, SET THIS SURVEY.

NOTE: ALL BEARINGS ON THIS PLAN ARE ASTROLOGICALLY BASED ON A COLLIMATED LEVEL TAKEN AT THE SW CORNER OF THE HUNTLEY SCHOOL SUBDIVISION AND ARE MADE RELATIVE TO THE ADJACENT SURVEYING METHODS.

REAL ESTATE DISCLOSURES:

1. NO PROPOSED PAVING OF "EDUCATION BOULEVARD".
2. ONLY NORMAL RURAL FIRE PROTECTION AND AMBULANCE SERVICE CAN BE EXPECTED.
3. HIGH WINDS MAY CAUSE BLOWING OF FARM RESIDUE ONTO THE SUBDIVISION.
4. FUTURE MAINTENANCE AND/OR REMOVAL OF UNDERGROUND STORAGE TANK AT GAS PUMP LOCATED ON OR NEAR LOT 7 IS THE RESPONSIBILITY OF THE GOSHEM COUNTY UNIFIED SCHOOL DISTRICT #1.
5. NO COUNTY MAINTENANCE WILL BE PERFORMED ON "EDUCATION BOULEVARD".

NOTE: THIS SUBDIVISION IS SERVED BY A COMMUNITY WATER AND SEWER SYSTEM WHICH IS TO BE OWNED AND OPERATED BY THE "HUNTLEY SCHOOL SUBDIVISION LANDOWNERS ASSOCIATION".



UTILITIES EASEMENT LOCATION:

ALL UTILITIES IN THIS SUBDIVISION ARE IN PLACE AND IN USE. THE EASEMENTS SHOWN HEREON ARE BASED ON THE ACTUAL LOCATION OF THE RESPECTIVE UTILITIES AS WITNESSED BY ABOVE GROUND APURTENANCES AND AS SHOWN ON MAPS OF THE UTILITIES SYSTEM GIVEN TO US BY GOSHEM COUNTY UNIFIED SCHOOL DISTRICT #1. WE WERE UNABLE TO LOCATE ALL OF THE MANHOLES ON THE SANITARY SEWER SYSTEM AND PART OF THE SYSTEM IS SHOWN AS DERIVED FROM THE PLANS. THERE WASN'T MUCH ABOVE GROUND PHYSICAL EVIDENCE OF THE WATER DISTRIBUTION SYSTEM AND IT IS PLATTED MOSTLY ACCORDING TO PLATS OF THE SYSTEM FURNISHED BY G. C. U. S. D. #1. THE TELEPHONE SYSTEM IS LOCATED ACCORDING TO PLATS GIVEN TO US BY UNITED TELEPHONE SYSTEM IN COORDINATION WITH THE EXISTING TELEPHONE PEDESTALS. THE POWER SHOWN HEREON IS LOCATED ACCORDING TO THE OVERHEAD POWER LINES.

MAP OF HUNTLEY SCHOOL SUBDIVISION

Part of the N1/2 NW1/4 of Section 36, Township 23 North, Range 61 West, Goshen County, Wyoming

235