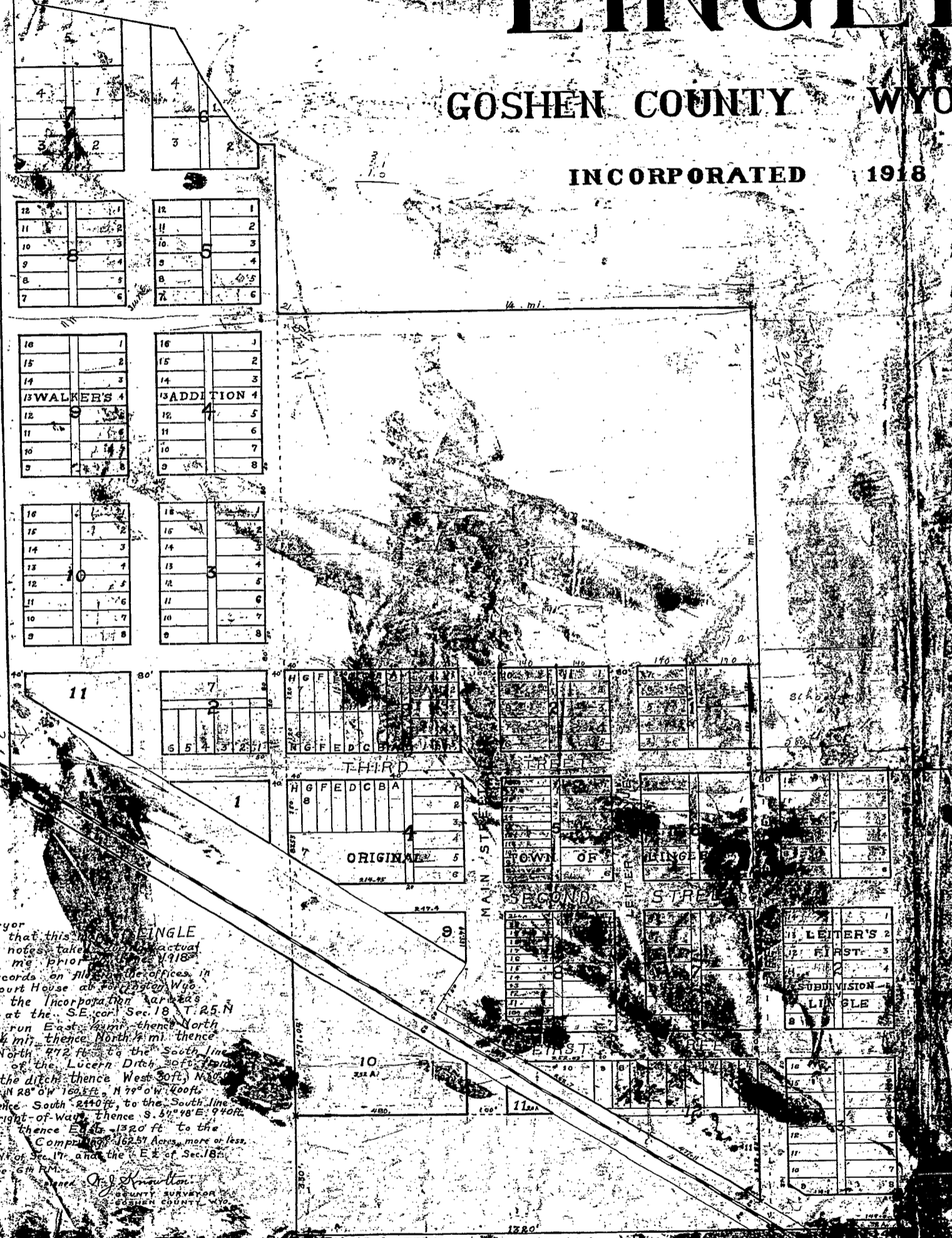


# LINGLE

GOSHEN COUNTY WYOMING

INCORPORATED 1918



The State of Wyoming }  
County of Goshen }  
This instrument was filed for recording  
on the 11th day of July  
A. D. 1918 at 9:00 o'clock A.M.  
and is duly recorded in Book of Records

*H. Little*  
County Clerk for Goshen County, Wyoming

Plat of Surveyor  
I hereby certify that this plat of LINGLE  
was made from notes taken by me in the field  
and is made by me prior to the 1st day of July 1918  
from official records on file in the offices in  
Goshen County Court House at Goshen, Wyo.  
boundaries of the Incorporation Lingle  
Beginning at the S.E. cor. Sec. 18, T. 25. N.  
R. 62. W. of 6th P.M. run East 400 ft. thence North  
thence West 1/2 mi. thence North 1/2 mi. thence  
thence North 772 ft. to the South line  
the right-of-way of the Lucern Ditch 300 ft. from  
center line of the ditch thence West 300 ft. N 30°  
N 30° 30' W 170 ft. N 28° 0' W 160 ft. N 79° 0' W 400 ft.  
30 W 107.5 ft. thence South 240 ft. to the South line  
the C.B. & Q.R.R. right-of-way thence S. 57° 48' E. 940 ft.  
South 801.04 ft. thence East 1320 ft. to the  
of beginning. Containing 162.51 Acres, more or less.  
ed in the SW 1/4 of Sec. 17, and the E 1/2 of Sec. 18,  
N. R. 62 W. of the 6th P.M.

*O. J. Hamilton*  
COUNTY SURVEYOR  
GOSHEN COUNTY, WYO.