

NOTES

1. NO PROPOSED PUBLIC SEWAGE DISPOSAL SYSTEM.
2. NO PROPOSED WATER SOURCE.
3. INGRESS-EGRESS EASEMENT IS PRIVATE DRIVEWAY FOR TRACT 3-A NOT PROPOSED TO BE PAVED AND NO COUNTY MAINTENANCE.
4. ONLY NORMAL RURAL FIRE PROTECTION AND AMBULANCE SERVICE CAN BE EXPECTED.
5. ALL LOTS IN THIS SUBDIVISION SHALL BE SUBJECT TO ASSESSMENTS AND POLICIES OF THE AFFECTED IRRIGATION DISTRICTS.

APPROVAL

COUNTY ENGINEER

The proposed General Plan of subdivision of Schlager Subdivision as depicted herein is hereby approved by Goshen County Engineer.

Russell Schamel WY. P.E. No. 3311
County Engineer

PLANNING COMMISSION

The foregoing plat of Schlager Subdivision is hereby approved by the Planning Commission of Goshen County, Wyoming in its authorized advisory capacity to the Governing Body at the regular scheduled meeting on the 27th day of March, 1984.

By: *Roy E. Whit* 3/30/84
Chairman Date

Attest: *Melvin B. Eaton*
Secretary

GOSHEN COUNTY COMMISSIONERS

The foregoing plat of Schlager Subdivision is hereby approved by the Board of County Commissioners of Goshen County, Wyoming acting in its capacity as the Governing Body at the regular scheduled meeting on the 27th day of April, 1984.

By: *Frank Johnson* 4/27/84
Chairman of the Board Date

Attest: *James S. Ragan*
County Clerk

DEDICATION

Know all men by these presents, that Roger Schlager, owner in fee simple of the lands embraced in this plat and description of Schlager Subdivision does hereby declare the subdivision of said land, as appears on this plat, to be his free act and in accordance with his desire, and does here by dedicate to the public forever the utilities easement shown herein.

Roger Schlager
Roger Schlager

ACKNOWLEDGEMENT

STATE OF WYOMING)
COUNTY OF GOSHEN)
On this 27th day of March, 1984, before me, a Notary Public in and for the State of Wyoming, personally appeared Roger Schlager, to me personally known, and acknowledged that they had executed the foregoing Dedication to be their free act and deed for the purposes herein mentioned.

In witness whereof, I have hereunto set my hand and affix the seal of my office the day and year herein mentioned.

My Commission Expires 28 August, 1984



[Signature]
Notary Public

CERTIFICATE OF EXECUTION

PLANNING DIRECTOR

All required Documents, Permit Fees, and Notices have been duly received and distributed by the office of the Planning Director for Goshen County, Wyoming.

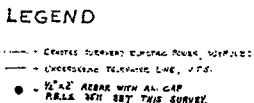
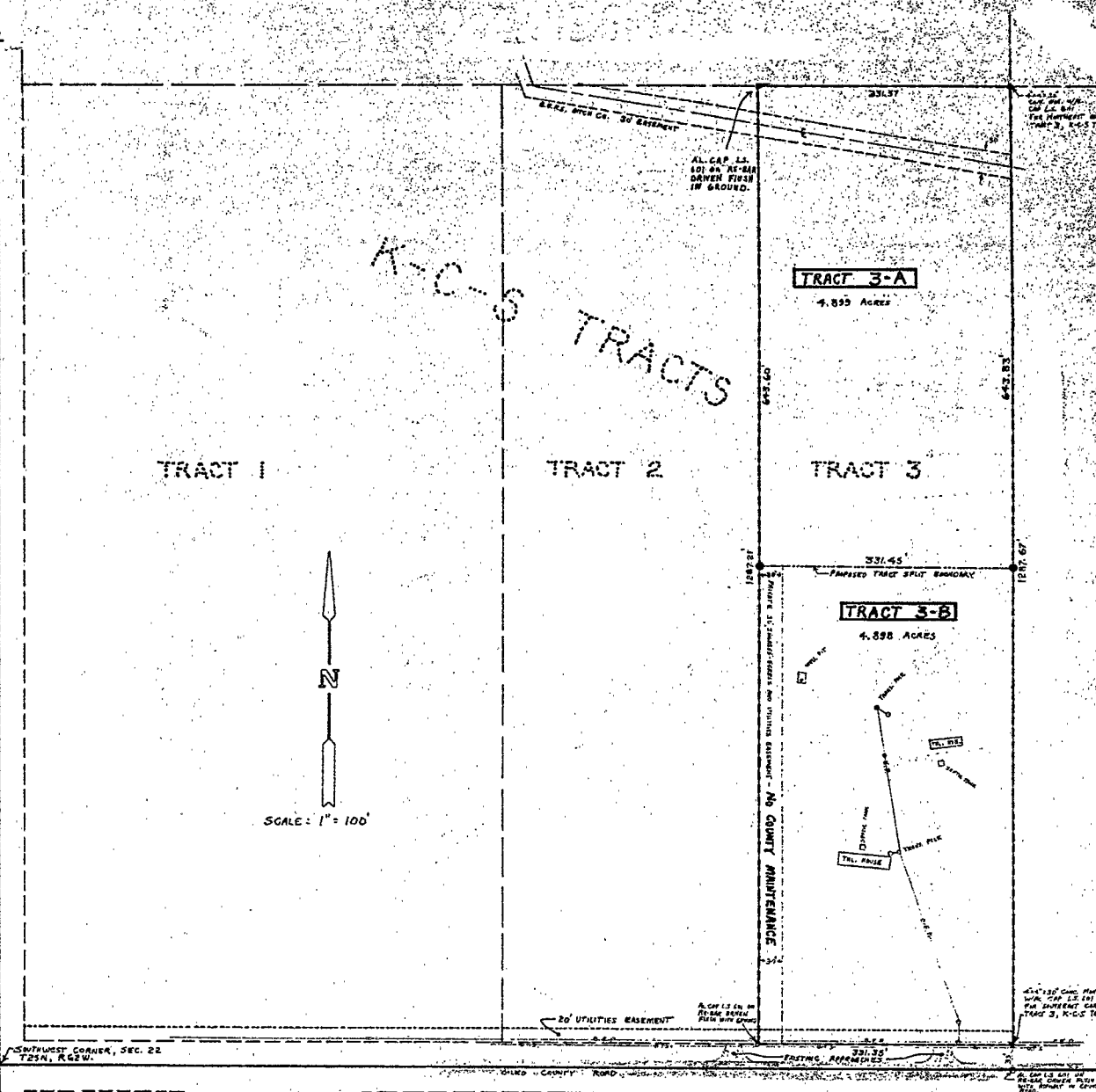
30 Mar 84
Date

Melvin B. Eaton
Planning Director

696767

STATE OF WYOMING
COUNTY OF GOSHEN
APR 11 1984
BOOK PLAT 197
W. Schamel, County Clerk

2:00 P.M.
B



SCHLAGER SUBDIVISION

TRACT 3 OF K-C-S TRACTS LOT SPLIT
GOSHEN COUNTY, WYOMING

MAP PREPARED BY: A. J. ENGINEERING + LAND SURVEYING
P.O. Box 99, 2510 W. 6th St.
TERRINGTON, WYOMING

SURVEYOR'S CERTIFICATE

STATE OF WYOMING)
COUNTY OF GOSHEN)

I, RUSSELL D. SCHAMEL, of WY Engineering and Land Surveying of Torrington, Wyoming, do hereby certify that this plat of Schlager Subdivision was made from notes taken during an actual field survey made on November 16, 1983, and that it correctly represents the lots, roads, and easements shown herein which are to be monumented on the ground by a 1/2 inch iron re-bar with aluminum caps marked REELS 388, as shown herein within 60 days of the Planning Commission's Recommendation of Approval of the final plat in accordance with the Goshen County Subdivision Regulations and that the lands embraced in this subdivision is all of TRACT 3 OF THE K-C-S TRACTS, A SUBDIVISION IN THE SW 1/4, SW 1/4 OF SECTION 22, T25N, R62W OF THE 6th RM., GOSHEN COUNTY, WYOMING.

WYOMING P.E.L.S. 3511

Russell Schamel
RUSSELL D. SCHAMEL

