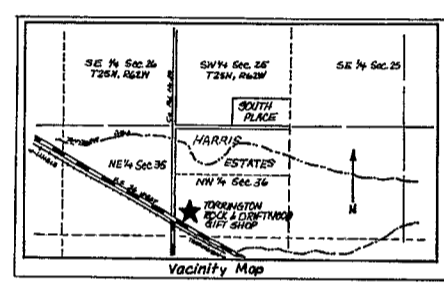
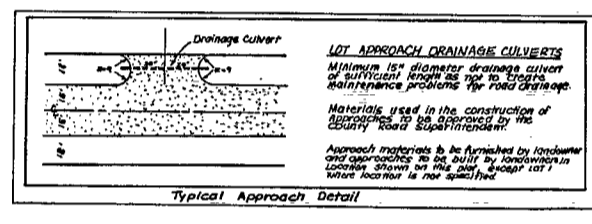


- ✓ NO proposed Public Sewage System.
 - ✓ NO proposed Public Water Source.
- LEGEND**
- ◊ 6" Concrete Monument with Brass Cap Marked R.L.S. 3891.
 - 1/2" x 2" Re-Bar w/Al. Cap Marked R.L.S. 3891.



DEDICATION

Know all men by these presents, that Donald F. Moss and Janice M. Moss, husband and wife, as an estate by entirety, owners in fee simple of the lands embraced in this plat and description of South Place do hereby declare the subdivision of said land, as appears on this plat, to be their free act and deed and in accordance with their desires, and do hereby dedicate to the public forever the easements shown hereon.

Donald F. Moss
Donald F. Moss

Janice M. Moss
Janice M. Moss

ACKNOWLEDGEMENT

STATE OF WYOMING }
COUNTY OF GOSHEN } ss

On this 21st day of April, 1982, before me, a Notary Public in and for the State of Wyoming, personally appeared Donald F. Moss and Janice M. Moss, to me personally known, and acknowledged that they had executed the foregoing Dedication to be their free act and deed for the purposes herein mentioned.

In witness whereof, I have hereunto set my hand and affix the seal of my office the day and year herein mentioned.

My Commission Expires: 11/22, 1985

Donald E. Ingers
Notary Public

APPROVAL

COUNTY ENGINEER
The proposed General Plan of subdivision for South Place as depicted hereon, is hereby approved by the Goshen County Engineer.

Russell Schaefer P.E. L.S. No. 3511
County Engineer

PLANNING COMMISSION
The foregoing plat of South Place is hereby approved by the Planning Commission of Goshen County, Wyoming, in its authorized advisory capacity to the Governing Body at the regular scheduled meeting on the 15th day of March, 1982.

By: *Lin E. Whit* 3/15/82
Chairman Date

Attest: *Albert Hillier*
Secretary

GOSHEN COUNTY COMMISSIONERS
The foregoing plat of South Place is hereby approved by the Board of County Commissioners of Goshen County, Wyoming, acting in its capacity as the Governing Body at the regular scheduled meeting on the 7th day of April, 1982.

By: *Frank Johnson* 4-7-82
Chairman of the Board Date

Attest: *Donald E. Ingers*
County Clerk

SURVEYOR'S CERTIFICATE

STATE OF WYOMING }
COUNTY OF GOSHEN } ss

I, Robert W. Taylor, of 1/2 Engineering and Land Surveying of Torrington, Wyoming, do hereby certify that this plat of South Place was made from notes taken during an actual field survey made on March 5, 1982, and that it correctly represents the lots, road, and easements shown hereon which are to be monumented on the ground by a 1/2" iron re-bar with aluminum caps and concrete monuments with brass caps, both marked R.L.S. 3891, as shown hereon within 60 days of the Planning Commission's Recommendation of Approval of the final plat in accordance with the Goshen County Subdivision Regulations, and that the lands embraced in this subdivision are that part of the SW 1/4 of Section 25, Township 25 North, Range 42 West of the 6th P.M., Goshen County, Wyoming. More particularly described as follows:

BEGINNING AT THE SOUTHWEST CORNER OF SW 1/4 OF SECTION 25, T25N, R42W, WHICH IS MONUMENTED BY A 6-INCH DIAMETER CONCRETE MONUMENT WITH A BRASS CAP MARKED R.L.S. 3891 AND IS LOCATED IN A 3-WAY FENCE CORNER; THENCE S89°51'00"W. (S. 89°51'00"W. being the bearing of the south line of SW 1/4 of said Section 25 being based on a solar observation made at a triangulation point located approximately in the middle of the N 1/2 SW 1/4 of said Section 25 with all other bearings in this description relative thereto.) ALONG THE SOUTH LINE OF THE SW 1/4 OF SAID SECTION 25 AND GENERALLY ALONG AN EXISTING BARBED WIRE FENCE, A DISTANCE OF 1320.0 FEET TO A 6-INCH DIAMETER CONCRETE MONUMENT WITH A BRASS CAP MARKED R.L.S. 3891; THENCE N00°12'06"E ALONG A LINE THAT IS PARALLEL WITH THE EAST LINE OF THE SW 1/4 OF SAID SECTION 25, A DISTANCE OF 660.0 FEET TO A 6-INCH DIAMETER CONCRETE MONUMENT WITH A BRASS CAP MARKED R.L.S. 3891; THENCE N89°51'00"E ALONG A LINE THAT IS PARALLEL WITH THE SOUTH LINE OF THE SW 1/4 OF SAID SECTION 25, A DISTANCE OF 1320.0 FEET TO A 6-INCH DIAMETER CONCRETE MONUMENT WITH A BRASS CAP MARKED R.L.S. 3891; GENERALLY IN A NORTH-SOUTH BARBED WIRE FENCE AND ON THE EAST BOUNDARY LINE OF THE SW 1/4 OF SAID SECTION 25; THENCE S00°12'06"W ALONG THE EAST BOUNDARY OF THE SW 1/4 OF SAID SECTION 25 AND GENERALLY ALONG A BARBED WIRE FENCE, A DISTANCE OF 660.0 FEET TO THE POINT OF BEGINNING AND CONTAINING 22.0 ACRES MORE OR LESS.

Wyoming R.L.S. No. 3981

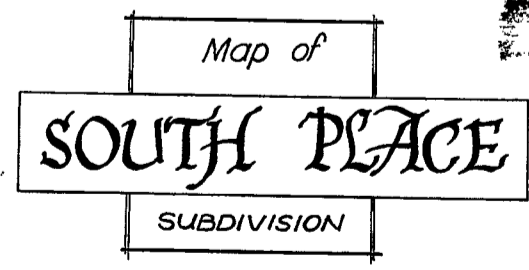
Robert W. Taylor
Robert W. Taylor

CERTIFICATE OF EXECUTION

PLANNING DIRECTOR
All required Documents, Permit Fees, and Notices have been duly received and distributed by the office of the Planning Director for Goshen County, Wyoming.

3/15/82
Date

Albert Hillier
Planning Director



Goshen County, Wyoming

68-1646
1:45 PM
B