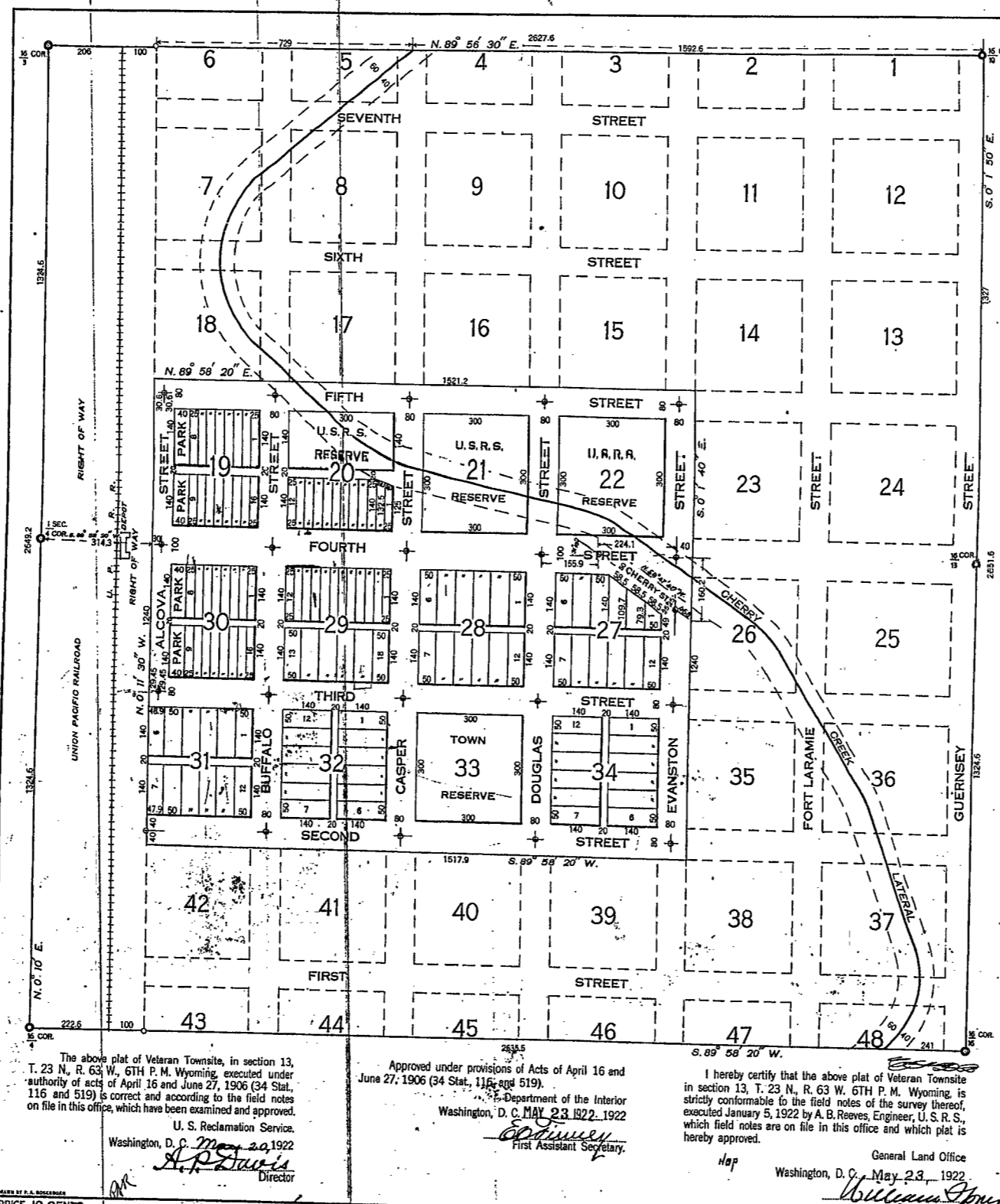


102



The above plat of Veteran Townsite, in section 13, T. 23 N., R. 63 W., 6TH P. M. Wyoming, executed under authority of acts of April 16 and June 27, 1906 (34 Stat., 116 and 519) is correct and according to the field notes on file in this office, which have been examined and approved.

U. S. Reclamation Service,
Washington, D. C. *May 20, 1922*
A. P. ...
Director

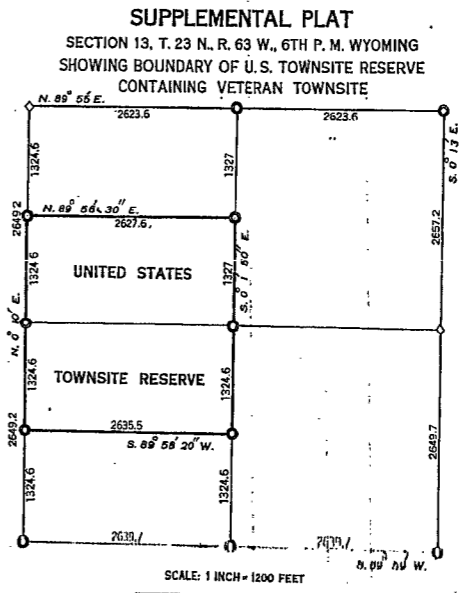
Approved under provisions of Acts of April 16 and June 27, 1906 (34 Stat., 116 and 519).

Department of the Interior
Washington, D. C. *MAY 23 1922*
Edwin ...
First Assistant Secretary

I hereby certify that the above plat of Veteran Townsite in section 13, T. 23 N., R. 63 W. 6TH P. M. Wyoming, is strictly conformable to the field notes of the survey thereof, executed January 5, 1922 by A. B. Reeves, Engineer, U. S. R. S., which field notes are on file in this office and which plat is hereby approved.

General Land Office
Washington, D. C. *May 23, 1922*
William ...
Commissioner

PRICE 10 CENTS.



- ⊕ Denotes Original Corners found in place.
- ⊙ Denotes Corners set by A. B. Reeves, Engineer, U. S. R. S.
- ⊕ Denotes Iron Post set by A. B. Reeves, at intersection of center lines of streets.

All measurements given in feet.
All full blocks are 300 feet square; Streets are 80 feet wide except Fourth Street, which is 100 feet wide. Alcona Street is approximately 60 feet wide. Cherry Street is 50 feet wide. Alleys are 20 ft. wide.
All regular full lots are 25' and 50' by 140 feet.
Fractional blocks and lots are as shown.
The North half of block 20, blocks 21 and 22 are Reclamation Service Reserves. Block 33 is reserved for town purposes. The West 40 feet of blocks 19 and 30 are park-reserves.

State of Wyoming, ss.
County of Goshen, ss.
This instrument was filed for record on the 10 day of July A. D. 1922, at 4 o'clock P.M. and is duly recorded in Book 1 on page 60253 1/2

James E. ...
County Clerk and Ex-officio Registrar of Deeds

DEPARTMENT OF THE INTERIOR
UNITED STATES RECLAMATION SERVICE
NORTH PLATTE IRRIGATION PROJECT
NEBRASKA - WYOMING
PLAT OF
VETERAN TOWNSITE
SHOWING LOTS AND BLOCKS OPEN TO SALE
SCALE OF FEET
100 0 500
MAP NO. 20284