

DEDICATION

KNOW ALL PERSONS BY THESE PRESENTS THAT Edward D. Alber and Margaret E. Alber, owners of the simple of of Tract 9 and of Tract 10, and their heirs, assigns and assigns, have granted and do hereby grant, to the City of Laramie, Wyoming, more particularly described as follows:

Subdividing the northeast corner of road Tract 10, thence 90°00'00" left (clockwise) from the north line of road Tract 9 and Tract 10, a distance of 263.77 feet to the northeast corner of road Tract 9, thence 180°50'00" along the northeast corner of road Tract 9, a distance of 270.00 feet to the southeast corner of road Tract 8, thence 270°00'00" along the south line of road Tract 8, a distance of 131.80 feet to the southwest corner of road Tract 10, thence 270°00'00" along the southwest corner of road Tract 10, thence 207°30'00" along the east line of road Tract 10, a distance of 238.83 feet to the point of beginning, containing 1.483 acres more or less.

This conveyance is made to be surveyed, plotted and shown as ALBER TRACTS, and the City of Laramie, Wyoming, shall cause the application of said land as it appears on this plat to be shown by appropriate monuments and in accordance with their duties and do hereby grant the statements for the purposes indicated herein.

Edward D. Alber
Edward D. Alber
Margaret E. Alber
Margaret E. Alber

ACKNOWLEDGEMENTS

STATE OF WYOMING }
COUNTY OF LARAMIE } ss

The foregoing instrument was acknowledged before me this 10 day of September, 1998, by Edward D. Alber and Margaret E. Alber, husband and wife.



Robert D. Alber
Notary Public, Laramie, WY.
My Commission Expires 12/31/2000

APPROVALS

Approved by the City of Laramie, Wyoming, to be shown on this plat, by the City of Laramie, Wyoming, on this 10 day of September, 1998.

John A. Shaw
City Clerk
City of Laramie, Wyoming

Approved by the City Council of the City of Laramie, Wyoming, this 10 day of September, 1998.

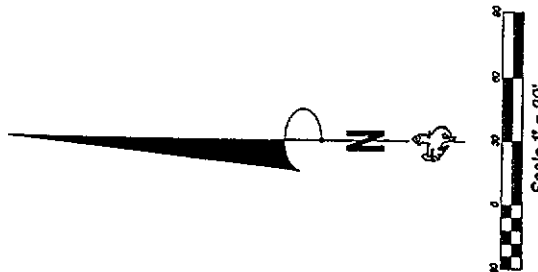
John A. Shaw
City Clerk
City of Laramie, Wyoming

Approved by the County Commissioners of Laramie County, Wyoming, this 10 day of September, 1998.

John A. Shaw
County Clerk
Laramie County, Wyoming

CERTIFICATE OF SURVEYOR

I, John A. Shaw, Registered Professional Land Surveyor in the State of Wyoming, being duly sworn, certify that this plat of ALBER TRACTS, as shown on this plat, was prepared by me or under my direct supervision during the month of October, 1998, that the monuments and survey of the same are correct and that this plat correctly represents and shows the true location of the lines of the tract as shown on this plat.



NOTE

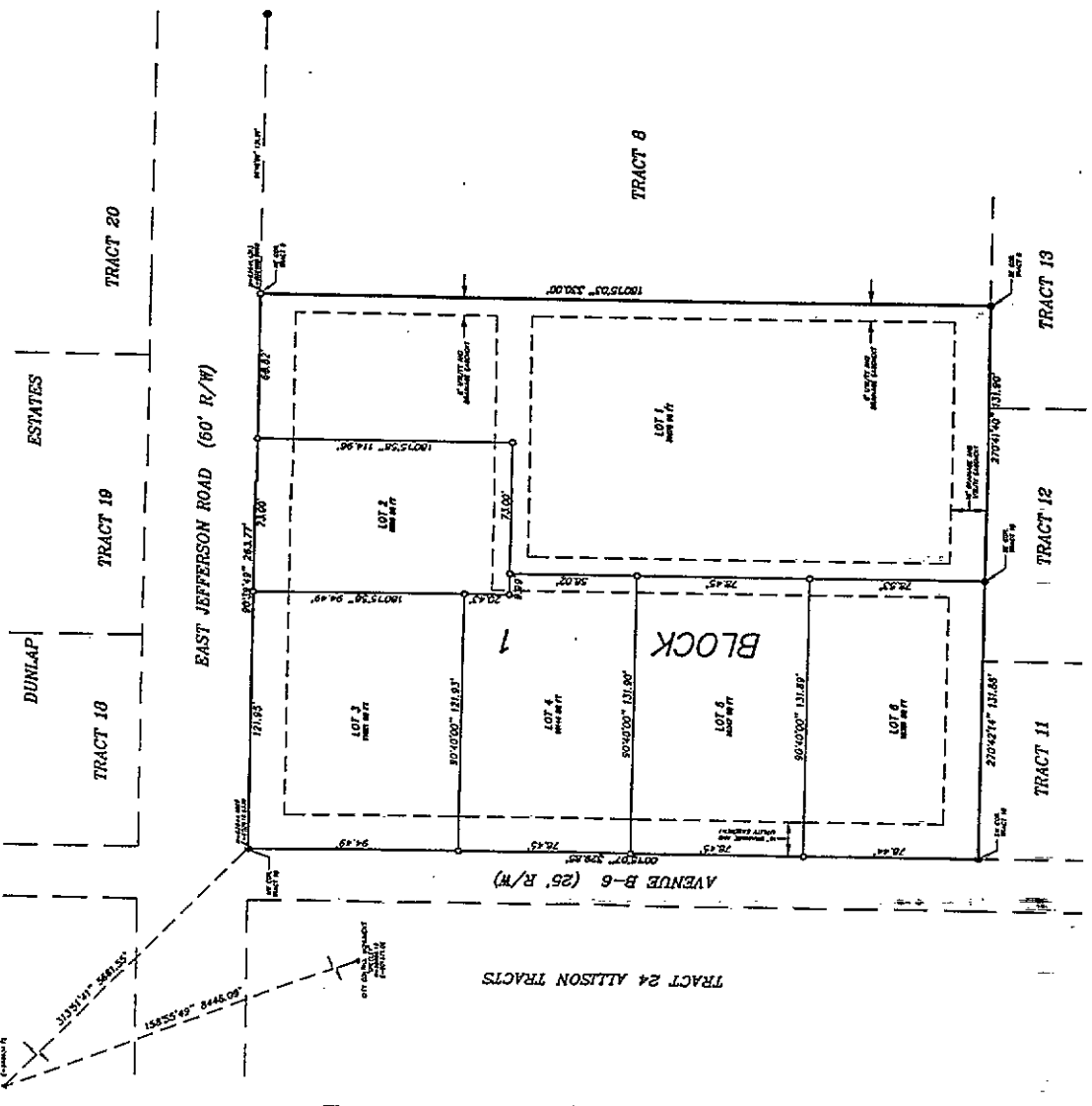
1) PART OF SECTION 34 OF SECTION 6 WITH INTRODUCTIONS FROM SURVEYOR'S RECORDS, 1998.

VACATION STATEMENT

1) U.S. DEPARTMENT OF THE INTERIOR, BUREAU OF LAND MANAGEMENT, TRACTS 8 AND 10, RICHARDSON TRACTS, CONTAINED WITH THIS PLAT.

LEGEND

- BEAR 1 1/2" LOG BEAR MARK OF ALUMINUM CAP STAMP 155 JUL 2500
- ROUND 1" PLASTIC CAP STAMP 13 2000
- ROUND 3/4" BRASS CAP SET IN CONCRETE



VICINITY MAP

FLUNG RECORD

Section 2, T.13N. R.66W. S.10E.
County of Laramie, WY
This instrument was filed for record at 1:15 PM on the 10 day of September, 1998, by John A. Shaw, Registered Professional Land Surveyor in the State of Wyoming.

John A. Shaw
County Clerk
Laramie County, Wyoming

AZIMUTH

180°

ALBER SUBDIVISION
A REPLAT OF

ALL OF TRACT 9 AND ALL OF TRACT 10,
RICHARDSON TRACTS,
A SUBDIVISION IN THE NE1/4 OF SECTION 8, T.13N., R.66W., 6TH P.M.,
LARAMIE COUNTY, WYOMING.

PREPARED NOVEMBER, 1998

STEEL SURVEYING SERVICES, LLC
PROFESSIONAL LAND SURVEYORS
1000 W. 17th Street, P.O. Box 2073

