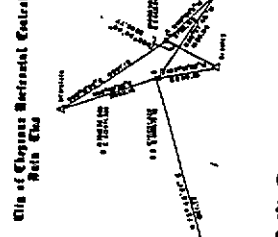


Call Code

1	2	3	4	5	6	7	8	9	10
11	12	13	14	15	16	17	18	19	20
21	22	23	24	25	26	27	28	29	30
31	32	33	34	35	36	37	38	39	40
41	42	43	44	45	46	47	48	49	50
51	52	53	54	55	56	57	58	59	60
61	62	63	64	65	66	67	68	69	70
71	72	73	74	75	76	77	78	79	80
81	82	83	84	85	86	87	88	89	90
91	92	93	94	95	96	97	98	99	100



Coordinates

Point	NORTHING	EASTING
1	4917.11	511.23
2	4917.11	511.23
3	4917.11	511.23
4	4917.11	511.23
5	4917.11	511.23
6	4917.11	511.23
7	4917.11	511.23
8	4917.11	511.23
9	4917.11	511.23
10	4917.11	511.23
11	4917.11	511.23
12	4917.11	511.23
13	4917.11	511.23
14	4917.11	511.23
15	4917.11	511.23
16	4917.11	511.23
17	4917.11	511.23
18	4917.11	511.23
19	4917.11	511.23
20	4917.11	511.23
21	4917.11	511.23
22	4917.11	511.23
23	4917.11	511.23
24	4917.11	511.23
25	4917.11	511.23
26	4917.11	511.23
27	4917.11	511.23
28	4917.11	511.23
29	4917.11	511.23
30	4917.11	511.23
31	4917.11	511.23
32	4917.11	511.23
33	4917.11	511.23
34	4917.11	511.23
35	4917.11	511.23
36	4917.11	511.23
37	4917.11	511.23
38	4917.11	511.23
39	4917.11	511.23
40	4917.11	511.23
41	4917.11	511.23
42	4917.11	511.23
43	4917.11	511.23
44	4917.11	511.23
45	4917.11	511.23
46	4917.11	511.23
47	4917.11	511.23
48	4917.11	511.23
49	4917.11	511.23
50	4917.11	511.23

Notes:

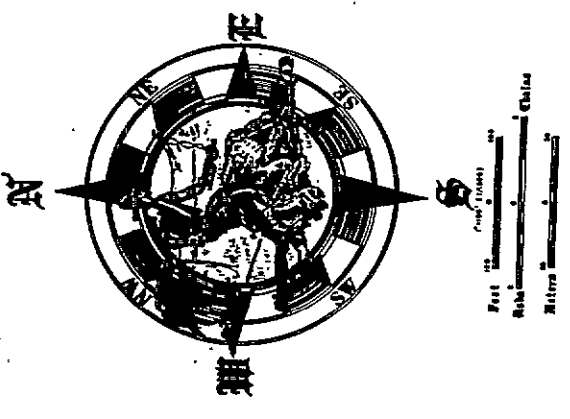
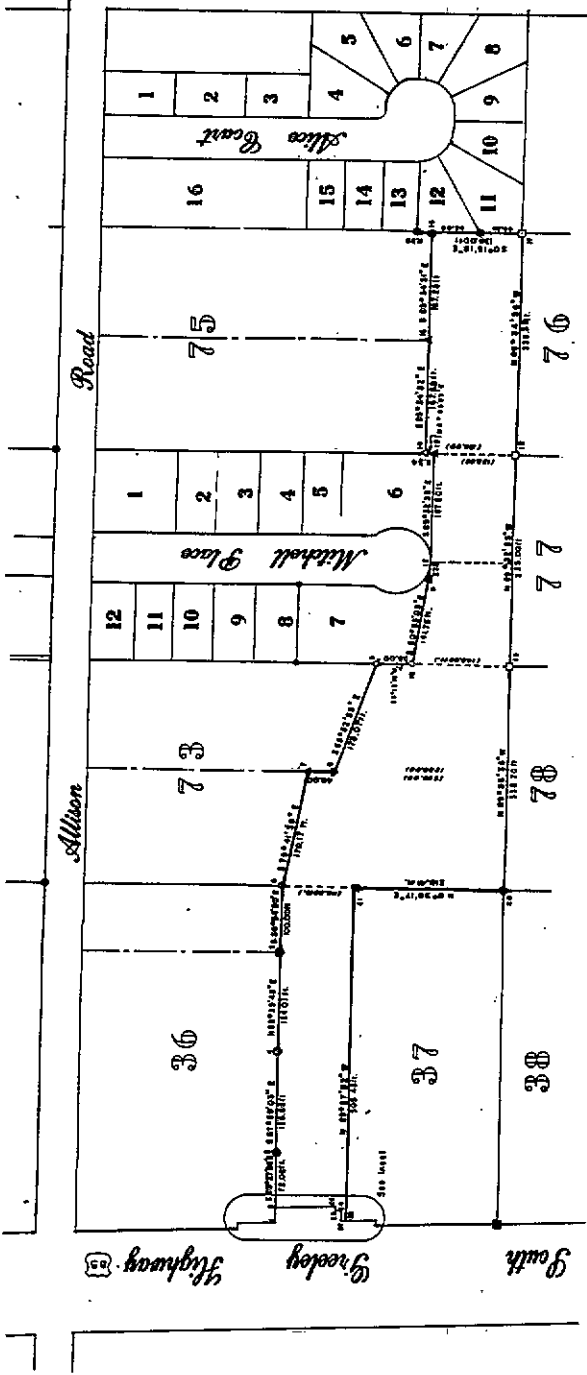
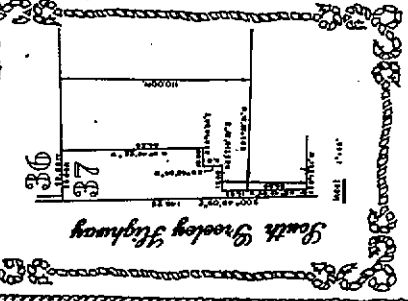
- The lines of bearing and distance are as shown on the map.
- The monument shown on the map is as shown on the map.
- The monument shown on the map is as shown on the map.

LEGEND

- Section 36, 37, 38
- Section 75, 76, 77, 78
- Section 1, 2, 3, 4, 5, 6, 7, 8, 9, 10, 11, 12, 13, 14, 15, 16
- Section 12, 11, 10, 9, 8, 7
- Section 1, 2, 3, 4, 5, 6
- Section 1, 2, 3, 4, 5, 6, 7, 8, 9, 10, 11, 12, 13, 14, 15, 16, 17, 18, 19, 20, 21, 22, 23, 24, 25, 26, 27, 28, 29, 30, 31, 32, 33, 34, 35, 36, 37, 38, 39, 40, 41, 42, 43, 44, 45, 46, 47, 48, 49, 50

Conversions
FROM METRIC UNITS OF LENGTH (SI)
TO AMERICAN STANDARD UNITS.

1 Meter = 39.3701 INCHES
1 Kilometer = 0.621371 MILES
1 Centimeter = 0.393701 INCHES
1 Decimeter = 3.93701 INCHES
1 Hectometer = 39.3701 METERS
1 Decameter = 10 METERS
1 Kilometer = 0.621371 MILES
1 Megameter = 1.09361 YARDS
1 Gigameter = 1.09361 KILOMETERS



THAT PART
REALIGNMENT
of

ALLISON DRAW

A Portion of Tract 37 of Allison Tracts 1st filing & Portions of Tract 73 & Tract 75 of Allison Tracts 2nd filing & a Portion of Lot 6 & Lot 7 of Block 3 of Mitchell Subdivision 2nd filing Situate, Lying & Being In

Sec. 6, T.13N., R.66W. of the 6th PM, Laramie County, Wyoming
Trustees of Surveying & Mapping Co.
P.O. Box 11

Certificate of Surveyor
State of Wyoming

That I, [Name], a Licensed Surveyor in the State of Wyoming, do hereby certify that the foregoing is a true and correct copy of the original record of the survey as the same appears on the records of the Surveyors Office, Laramie, Wyoming, and that the same is a true and correct copy of the original record of the survey as the same appears on the records of the Surveyors Office, Laramie, Wyoming, and that the same is a true and correct copy of the original record of the survey as the same appears on the records of the Surveyors Office, Laramie, Wyoming.

FILED RECORD

Map of [Name] 33
This instrument was filed for record on the 11th day of [Month], 19[Year] at [City], Wyoming.
[Signature]
[Title]

Land Description

The above described parcel contains 5.5 acres more or less and is to be used as a cemetery. Said cemetery and its location were set out and marked in the map of the property of the year 1904 and have been approved.

