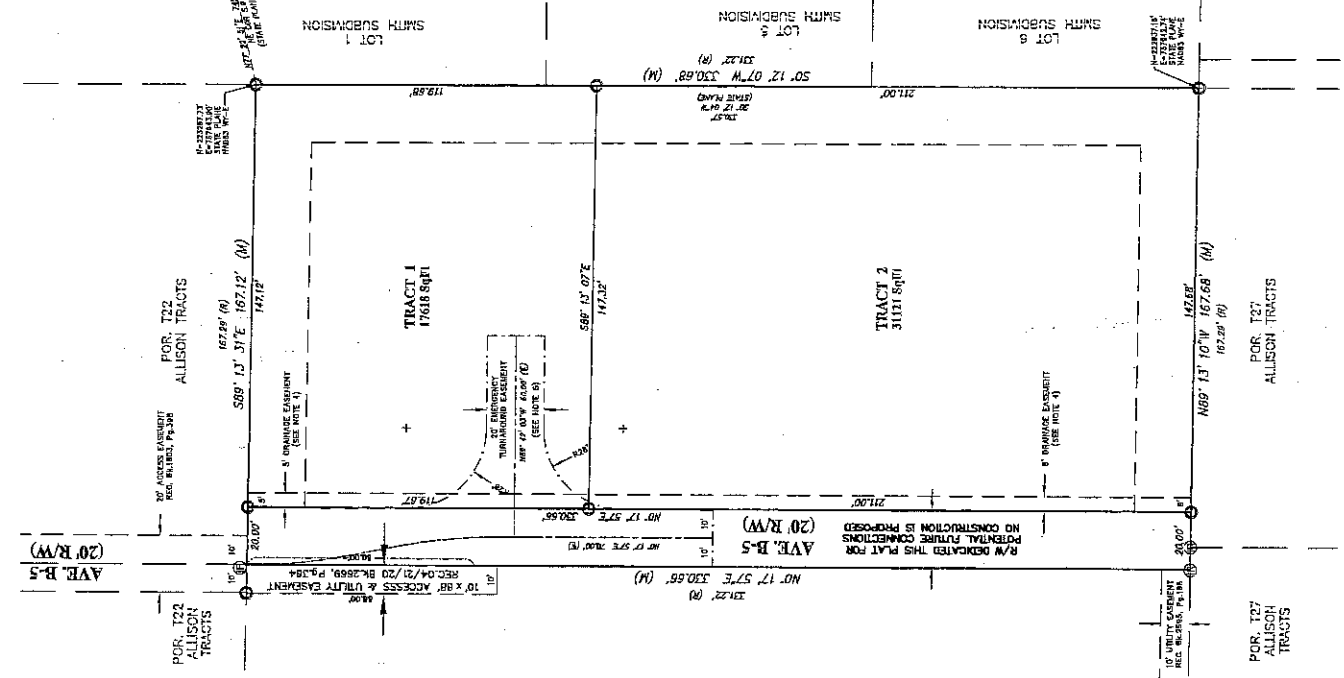


• DOMESTIC WATER AND SANITARY SEWER SERVICES TO BE PROVIDED BY SOUTH CHEYENNE WATER AND SEWER DISTRICT - FIRE PROTECTION TO BE PROVIDED BY LARAMIE COUNTY FIRE DISTRICT #1 •  
 • THE SURFACE ESTATE OF THE LAND TO BE SUBDIVIDED IS SUBJECT TO FULL AND EFFECTIVE DEVELOPMENT OF THE MINERAL ESTATE •



**LEGEND**

- SET 1/2" ALUMINUM CAP STAMPED "SSS P.L.S. 5910" ON "X" X 24" REBAR.
- FOUND 1/2" ALUMINUM CAP STAMPED "SSS P.L.S. 5910"
- ⊙ FOUND 1/2" IRON PIPE

**Scale: 1" = 30'**

**North Arrow**

**Section Markers:** S.4, S.3, S.9, S.10

**DEDICATION**

KNOW ALL PERSONS BY THESE PRESENTS THAT: Jennifer Rebecca Hess, for and on behalf of the South 331.22 feet of the East 167.29 feet of Tract 22, Allison Tracts, Laramie County, Wyoming.

Has caused the same to be surveyed, vacated, and re-plotted to be known as ALLISON TRACTS, 4th FILING and does hereby declare the subdivision of said land as it appears on this plat, to be their free act and deed and in accordance with their desires and do furthermore dedicate the rights-of-way as shown and grant the easements for the purposes indicated hereon.

*Jennifer Rebecca Hess*  
 Jennifer Rebecca Hess  
**ACKNOWLEDGEMENT**

STATE OF WYOMING }  
 COUNTY OF LARAMIE } SS  
 The foregoing instrument was acknowledged before me this 15<sup>th</sup> day of June, 2020 by Jennifer Rebecca Hess.

*Jessie P. Clark*  
 Jessie P. Clark, Laramie County, Wyoming  
 My Commission Expires APR 20, 2022

- NOTES**
- ALL UNMONUMENTED TRACT CORNERS, ANGLE POINTS AND CURVE POINTS TO BE MONUMENTED WITH A 1/2" ALUMINUM CAP STAMPED "SSS P.L.S. 5910" ON 5/8" X 24" REBAR.
  - NO PORTION OF THIS PLAT FALLS WITHIN A FEMA SPECIAL 100-YEAR FLOOD HAZARD AREA AS SHOWN ON FIRM PANEL J602021358F DATED JANUARY 17, 2007.
  - BASE OF GRID DISTANCES: WYOMING STATE PLANE COORDINATES, EAST ZONE, NAD83-2011, US SURVEY FEET. CURVE DISTANCES: COMBINATION FACTOR = 0.989567783.
  - THE "DRAINAGE EASEMENT" GRANTED HEREON FOR THE PURPOSE INDICATED CONCURRENT WITH EXTENSION OF AVENUE B TO DESIGNATED RIGHT-OF-WAY.
  - "20' EMERGENCY TURNAROUND EASEMENT", ABUTTING PUBLIC R/W DEDICATED HEREON, GRANTED HEREON PURSUANT TO SECTION 3-5-106 (F)(3) AND (G)(1) OF THE 2019 LARAMIE COUNTY LAND USE ORDINANCE (L.U.O.) AND THE 2019 LARAMIE COUNTY ZONING ORDINANCE (L.U.Z.O.) (ALTERNATIVE TO 120 HANDBOOK) OF APPENDIX D OF THE INTERNATIONAL RES CODE AS ADOPTED.

**APPROVALS**

Approved by the Laramie County Planning Commission this 14<sup>th</sup> day of November, 2019.

*Jessie P. Clark*  
 Chairwoman

Approved by the Board of Commissioners of Laramie County, Wyoming, this 30<sup>th</sup> day of December, 2019.

*Linda M. Heath* ATTEST: *Jessie K. Rice*  
 Chairwoman County Clerk

**CERTIFICATE OF SURVEYOR**

I, Jeffrey B. Jones, A Licensed Professional Land Surveyor in the State of Wyoming, for and on behalf of Steel Surveying Services, LLC, hereby state, in my professional opinion and belief, that this map was prepared from field notes taken under my direct supervision and that the map correctly shows the results of said survey and that the monuments found or set are as shown.

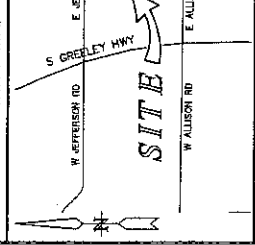


Description: 18144  
 The State of Wyoming }  
 County of Laramie } SS  
 This instrument was filed for record at 10:56 o'clock A.M. on the 25 day of JUNE A.D. 2020 and duly recorded in book 11 on page 180 P.180

*Jessie K. Rice*  
 County Clerk & Ex. Officer  
 By: *Jessie K. Rice* Deputy

**VACATION STATEMENT**

IT IS THE INTENT OF THIS REPLAT TO VACATE THE SOUTH 331.22 FEET OF THE EAST 167.29 FEET OF TRACT 22, ALLISON TRACTS, LARAMIE COUNTY, WYOMING. EXISTING EASEMENTS ARE TO REMAIN UNLESS NOTED OTHERWISE.



**FILING RECORD**

REC'D # 782414  
 DEPT. OF LAND SURVEYING  
 DIVISION OF LAND SURVEYING

REvised: 5/14/2020  
 ALLISON ESMT HESS LORENZ\18151 REVISED FINAL PLAT.dwg  
 © COPYRIGHT 2018 STEEL SURVEYING SERVICES, LLC. ALL RIGHTS RESERVED

**ALLISON TRACTS  
 4th FILING**

A REPLAT OF  
 ALL OF THE SOUTH 331.22 FEET OF THE EAST 167.29 FEET  
 OF TRACT 22, ALLISON TRACTS  
 SITUATED IN THE NE1/4 OF SECTION B,  
 T.13N., R.66W., 6th P.M., LARAMIE COUNTY, WYOMING  
 PREPARED AUGUST 2019



**STEEL SURVEYING SERVICES, LLC**  
 PROFESSIONAL LAND SURVEYORS  
 PLANNING & DEVELOPMENT SPECIALISTS  
 1102 WEST 18th ST. CHEYENNE, WY. 82001 • (307) 634-7273  
 756 OILCHIEF ST. WHEATLAND, WY. 82201 • (307) 582-3769  
 www.SteelSurvey.com • info@SteelSurvey.com