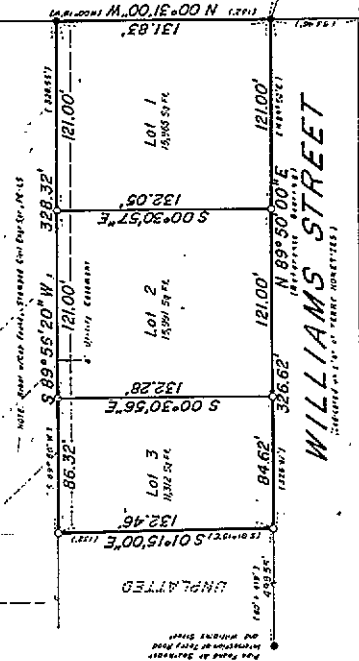


Filing Record

623164

The State of Wyoming }
 County of Laramie }
 This instrument was filed for record
 on 12/28 day of March, 1981, at 10:30 AM.
 by James C. Williams and duly recorded in
 Book 15 Page 6
James C. Williams
 County Clerk of Laramie County, Wyoming
 Section 17, T13N, R66W, 6th PM

UNPLATTED



TERRY, HOMESITES

Surveyor's Certificate

I, William H. Terry, a duly sworn and qualified Surveyor, do hereby certify that the above described lots are a true and correct subdivision of the NE 1/4 SW 1/4 of Section 17, T13N, R66W, 6th PM, Laramie County, Wyoming, as shown on the attached plat. The plat was prepared from recorded monuments and the field notes of a survey made by me on March 26, 1981 and that it correctly and accurately represents the true survey of Anders Subdivision as shown herein, more particularly described as follows:
 Beginning at a point on the south right-of-way line of Williams Street at the intersection of the said right-of-way line and the east line of the Laramie County Clerk and Ex-Officio Register of Deeds' map Book 15, Page 6, Laramie County, Wyoming; thence N 89° 50' 00\"/>

James C. Williams
 James C. Williams
 Surveyor
 Laramie, W. Y.
 Wyoming, U.S.A.

Dedication
 We, the undersigned, do hereby certify that the above described lots are a true and correct subdivision of the NE 1/4 SW 1/4 of Section 17, T13N, R66W, 6th PM, Laramie County, Wyoming, as shown on the attached plat. The plat was prepared from recorded monuments and the field notes of a survey made by me on March 26, 1981 and that it correctly and accurately represents the true survey of Anders Subdivision as shown herein, more particularly described as follows:
 Beginning at a point on the south right-of-way line of Williams Street at the intersection of the said right-of-way line and the east line of the Laramie County Clerk and Ex-Officio Register of Deeds' map Book 15, Page 6, Laramie County, Wyoming; thence N 89° 50' 00\"/>

Acknowledgement

The foregoing dedication was acknowledged before me by Ernest A. Anders and Evelyn M. Anders this 28 day of April, 1981.
 Ernest A. Anders
 Evelyn M. Anders

Approvals

Approved by the Ernest A. Anders County, Regional Planning Commission on the 28 day of April, 1981.
 Ernest A. Anders
 Chairman of the Board

Approved by the Board of County Commissioners of Laramie County on the 28 day of April, 1981.
 Ernest A. Anders
 Chairman of the Board



Anders Subdivision

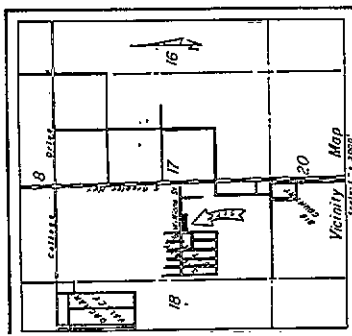
of a portion of the NE 1/4 SW 1/4
 Section 17, T13N, R66W, 6th PM,
 LARAMIE COUNTY, WYOMING



ALPINE SURVEYING
 April 1981
 Job 80239
 Cheyenne, Wyoming 82001

Legend & Notes

--- indicates pole boundary
 --- indicates road right-of-way
 --- indicates road easement
 --- indicates street easement



UNPLATTED

ESTABLISHED PAST PLATS
 T13N, R66W, 6TH PM, 1981