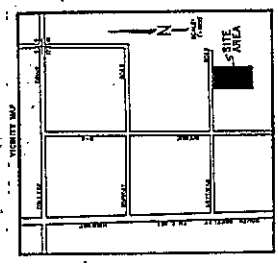
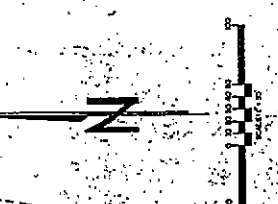
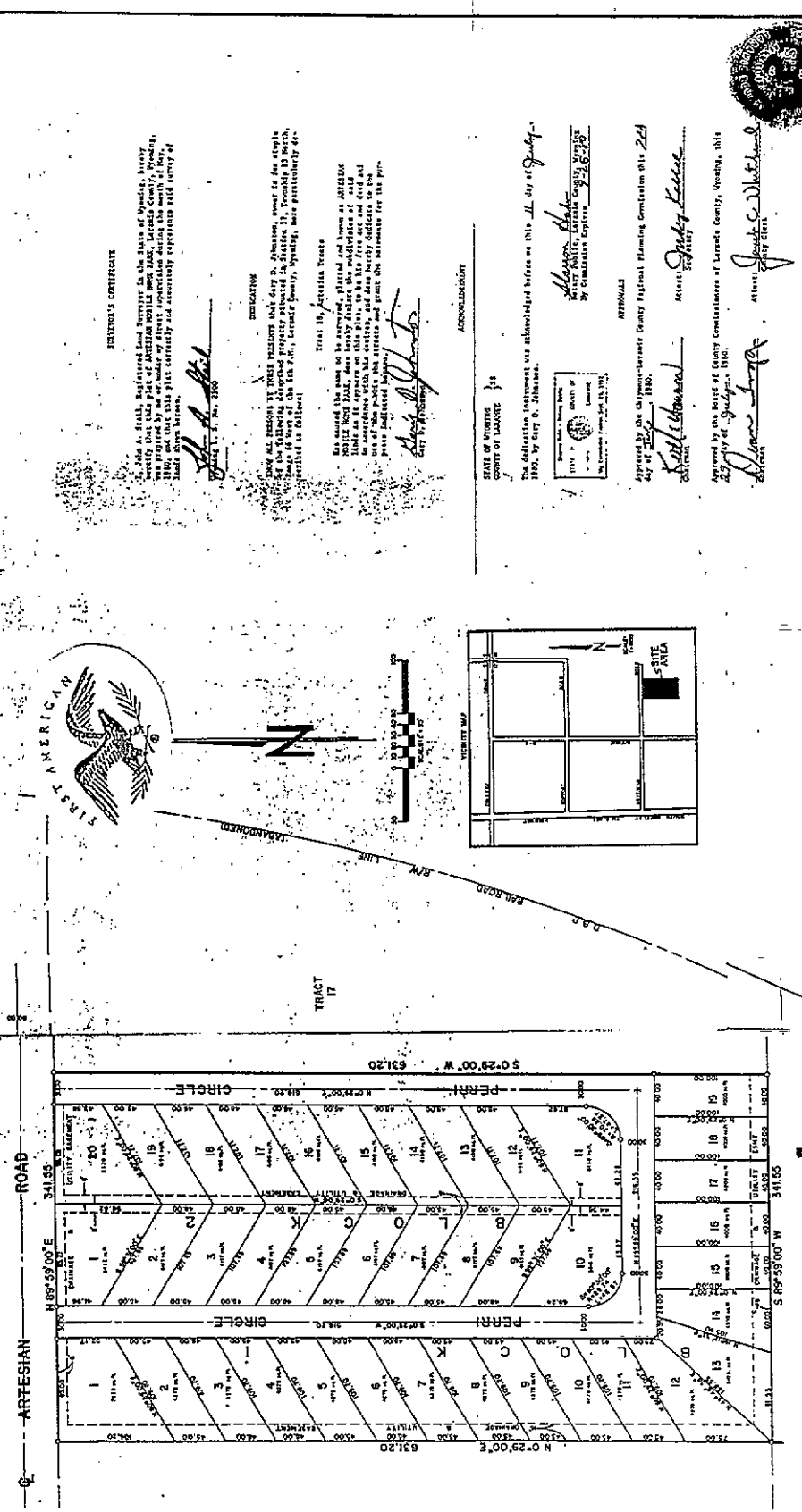


TRACT 14  
TRACT 15  
TRACT 16  
TRACT 17



**FILING RECORD**

584 673  
This plat is filed for the purpose of recording the same in the office of the County Clerk of Laramie County, Wyoming, under the name of *First American* and shall be subject to the provisions of the Wyoming Statutes relating to the same.

*John C. Johnson*  
*John C. Johnson*

- NOTES**
1. ALL LOTS ARE TO BE CONVEYED TO THE STATE OF WYOMING BY DEED UNDER THE NAME OF *BRW/NOBLETT* L.S. 1500.
  2. Exchange and utility easements are shown by dotted lines.
  3. Priority shown R-3.

NO PUBLIC MAINTENANCE OF STREETS

**DEEDGIVER'S CERTIFICATE**

I, John A. Frank, Registered Land Surveyor for the State of Wyoming, hereby certify that this plat of ARTESIAN MOBILE HOME TRACT, Laramie County, Wyoming, was prepared by me or under my direct supervision during the month of May, 1960, and that the same is in full conformity with the laws of this State and the rules and regulations of the State Board of Land Surveyors.

*John A. Frank*  
Surveyor  
OFFICE L. S. No. 1500

**DESCRIPTION**

THIS PLAT WAS PREPARED IN ACCORDANCE WITH THE PROVISIONS OF SECTION 10-2-101 OF THE STATUTES OF THE STATE OF WYOMING, AND THE RULES AND REGULATIONS OF THE STATE BOARD OF LAND SURVEYORS, AND IS SUBJECT TO THE PROVISIONS OF SECTION 10-2-101 OF THE STATUTES OF THE STATE OF WYOMING, AND THE RULES AND REGULATIONS OF THE STATE BOARD OF LAND SURVEYORS.

**TRACT 17, ARTESIAN TRACT**

HAS SAVED THE NAME TO BE SURVEYED, PLATTED AND BOUND AS ARTESIAN MOBILE HOME TRACT, AND HAS HEREBY DECLARED THE MODIFICATION OF SAID TRACT TO BE IN ACCORDANCE WITH THE PROVISIONS OF SECTION 10-2-101 OF THE STATUTES OF THE STATE OF WYOMING, AND THE RULES AND REGULATIONS OF THE STATE BOARD OF LAND SURVEYORS.

*John C. Johnson*  
Surveyor  
OFFICE L. S. No. 1500

**ACKNOWLEDGMENT**

STATE OF WYOMING  
COUNTY OF LARAMIE

The foregoing statement was acknowledged before me this 11 day of July, 1960, by JOHN C. JOHNSON.

*John C. Johnson*  
Notary Public, Laramie County, Wyoming  
My Commission Expires 7-28-70

**APPROVALS**

Approved by the Commissioners of Laramie County, Wyoming, this day of July, 1960.

*John C. Johnson*  
Commissioner

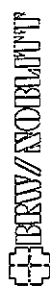
Approved by the Board of County Commissioners of Laramie County, Wyoming, this day of July, 1960.

*John C. Johnson*  
Chairman



**ARTESIAN MOBILE HOME PARK**  
A SUBDIVISION OF TRACT 17, ARTESIAN TRACT,  
SECTION 17, T1N, 18E, R1E, LARAMIE COUNTY, WYOMING

PREPARED MAY 1960



REGISTERED LAND SURVEYOR  
OFFICE L. S. No. 1500  
LARAMIE, WYOMING