

**DEDICATION**

HEREBY ALL PERSONS BY THESE PRESENTS THIS ATCHISON RANCH LLC, A WYOMING LIMITED LIABILITY COMPANY, WYOMING RANGE 84 WEST OF THE 6TH P.M., LARAMIE COUNTY, WYOMING, HEREBY PLATS A PORTION OF THE NW¼, MORE PARTICULARLY DESCRIBED AS FOLLOWS:

BEGINNING AT A POINT FROM WHICH THE NORTHWEST CORNER OF SAID SECTION 34 BEARS N.27°13'37"W (WHEN CONSIDERING THE NORTH LINE OF THE NW¼ OF SAID SECTION 34 HAS A BEARING OF S89°24'13"W AND A DISTANCE OF 128.25 FEET TO THE POINT OF BEGINNING; A DISTANCE OF 130.00 FEET TO THE POINT OF BEGINNING; A DISTANCE OF 453.34 FEET, THENCE S89°24'13"W, A DISTANCE OF 743.44 FEET, THENCE N.89°47'02"W, A DISTANCE OF 331.83 FEET, THENCE N.82°53'09"W, A DISTANCE OF 288.84 FEET TO THE POINT OF BEGINNING, CONTAINING TILES MARKED MORE OR LESS

HAS CAUSED THE SAME TO BE SURVEYED, PLATED AND KNOWN AS ATCHISON DRIVE, DOES HEREBY DEDICATE SAID DRIVE TO THE PUBLIC AS A PUBLIC HIGHWAY AND DO HEREBY GRANT THE EASEMENTS FOR THE PURPOSES INDICATED HEREON.

ATCHISON RANCH LLC, A WYOMING LIMITED LIABILITY COMPANY  
 PATRICIA F. EPLER, MEMBER  
 PATRICIA J. EPLER

**ACKNOWLEDGEMENTS**

STATE OF WYOMING }  
 COUNTY OF LARAMIE }  
 THE FOREGOING INSTRUMENT WAS ACKNOWLEDGED BEFORE ME THIS 04<sup>TH</sup> DAY OF  
 AUGUST, 2010, BY PATRICIA F. EPLER, MEMBER, ATCHISON RANCH LLC, A  
 WYOMING LIMITED LIABILITY COMPANY.

MY COMMISSION EXPIRES 4-30-14

**APPROVALS**

Approved by the Laramie County Planning Commission  
 this 11<sup>TH</sup> day of OCTOBER, 2010.

*Jody G. Clark*  
 Clerk

Approved by the Board of County Commissioners of Laramie County, Wyoming, this  
 5<sup>TH</sup> day of OCTOBER, 2010.

*David H. Harty*  
 Chairman  
*Patricia J. Epler*  
 County Clerk

**GENERAL NOTES**

- 1) BASIS OF BEARING - NORTH LINE OF THE NW¼ OF SECTION 34, RANGE 84, T.13N., R.84W., OF THE 6TH P.M., LARAMIE COUNTY, WYOMING.
- 2) ALL DISTANCES TO TOTAL USE THE MOST ACCURATE SURVEYING DATA AVAILABLE.
- 3) ALL DISTANCES TO TOTAL USE THE MOST ACCURATE SURVEYING DATA AVAILABLE.

**CERTIFICATE OF SURVEYOR**

I, John A. Stah, Registered Professional Land Surveyor in the State of Wyoming, do hereby certify that the foregoing plat was prepared from official plans and books of records and from notes of a field survey conducted by me or under my direct supervision during the term of my commission, and that the plat correctly represents the actual shown and that this plat correctly represents a true survey of the land depicted hereon to the best of my knowledge.

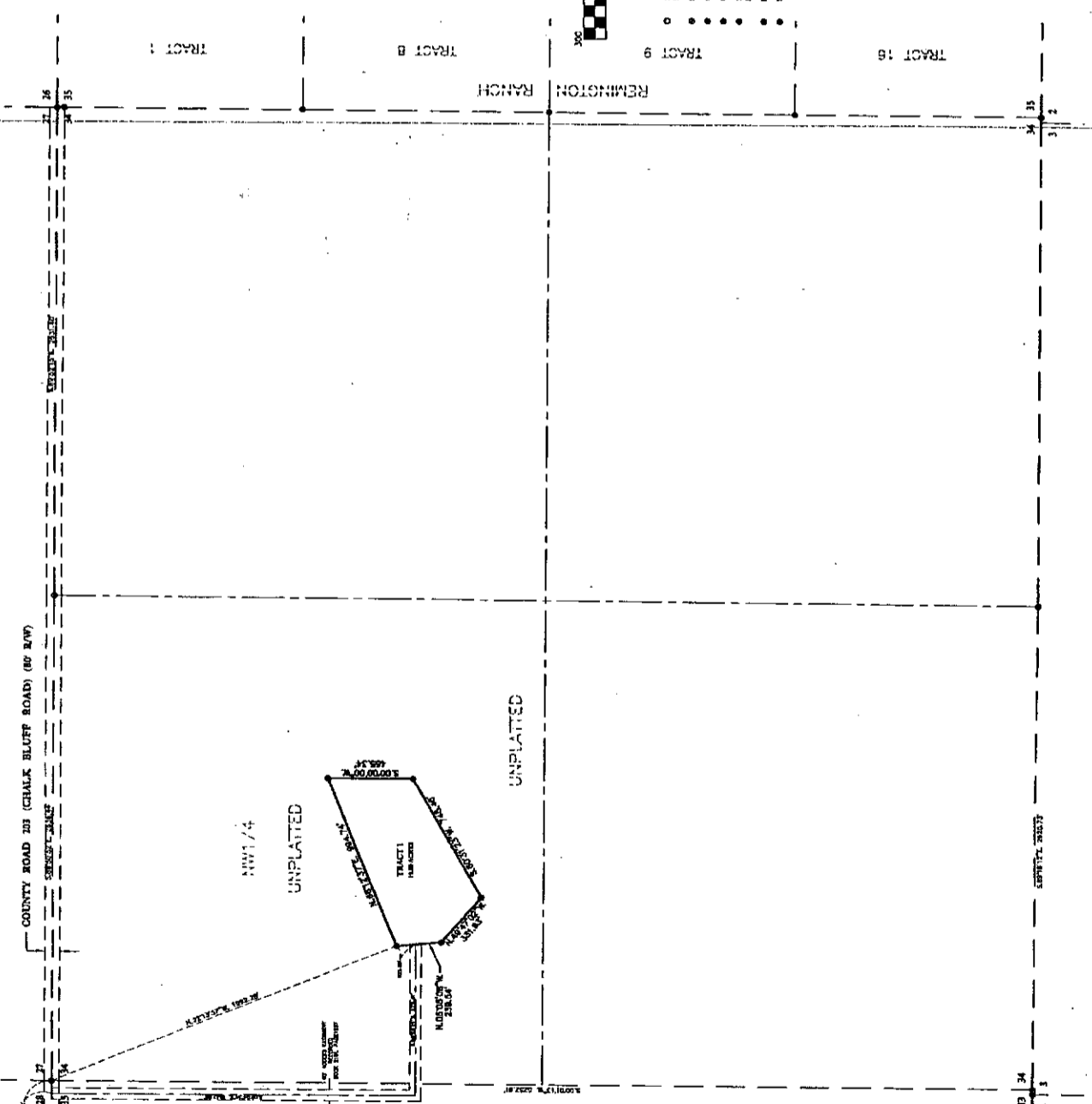


**ATCHISON GRAVEL**

SITUATED IN A PORTION OF THE NW¼  
 OF SECTION 34  
 T.13N., R.84W., OF THE 6TH P.M.,  
 LARAMIE COUNTY, WYOMING.

PREPARED AUGUST, 2010

**STELL SURVEYING SERVICES, LLC**  
 PROFESSIONAL LAND SURVEYORS  
 1170 W. 10TH STREET, CHEYENNE, WY 82001  
 PH: 307.634.1773 FAX: 307.634.1774



NO PUBLIC WATER OR WASTEWATER SYSTEMS ARE PROPOSED  
 NO PUBLIC MAINTENANCE OF ROADS  
 FIRE PROTECTION PROVIDED BY FIRE DISTRICT NO. 4

Recordation 530933-1  
 The State of Wyoming }  
 County of Laramie }  
 this 21<sup>ST</sup> day of August, 2010, I, John A. Stah, Registered Professional Land Surveyor in the State of Wyoming, do hereby certify that the foregoing plat was prepared from official plans and books of records and from notes of a field survey conducted by me or under my direct supervision during the term of my commission, and that this plat correctly represents the actual shown and that this plat correctly represents a true survey of the land depicted hereon to the best of my knowledge.

John A. Stah  
 Registered Professional Land Surveyor  
 No. 10000, Exp. 12/31/11  
 Laramie County, Wyoming

**RECORDATION**  
 RECORDED IN BOOK 88, PAGE 117  
 BY J. A. STAH, REGISTERED PROFESSIONAL LAND SURVEYOR

# SUBDIVISION SETUP FORM

Subdivision Proper Name ATCHISON GRAVEL

Received from LARAMIE COUNTY PLANNING

Grantor ATCHISON RANCH LLC Document Date 11/2/10

Grantee IN RE ATCHISON GRAVEL

Legal Description M&B PTN NW4 SEC34 T13N R64W

## SUBDIVISION INFORMATION

Short Alpha Name ATCHISON GRAVEL Number 3183

Block Name NONE Lot Name TRACT

Replats Previous Platting Y/N Defunct Subdivision Y/N

Covenants Book/Page \_\_\_\_\_ Old Hard Copy Book/Number COMP

## ABSTRACTING INFORMATION

For suffix 40-69 (Existing Parcels Affected)

TWN/SUBD	RNG/BLOCK	BEGIN SEC/LOT	END SEC/LOT	R/V SW
<u>13</u>	<u>64</u>	<u>34</u>		

For suffix 70-99 (New Parcels Created)

BLOCK #	BEGIN LOT	END LOT	BLOCK #	BEGIN LOT	END LOT
3183	<u>NONE</u>	<u>1</u>			