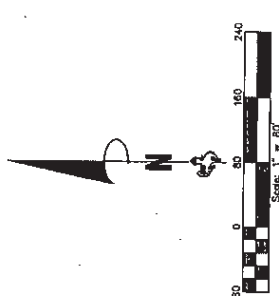
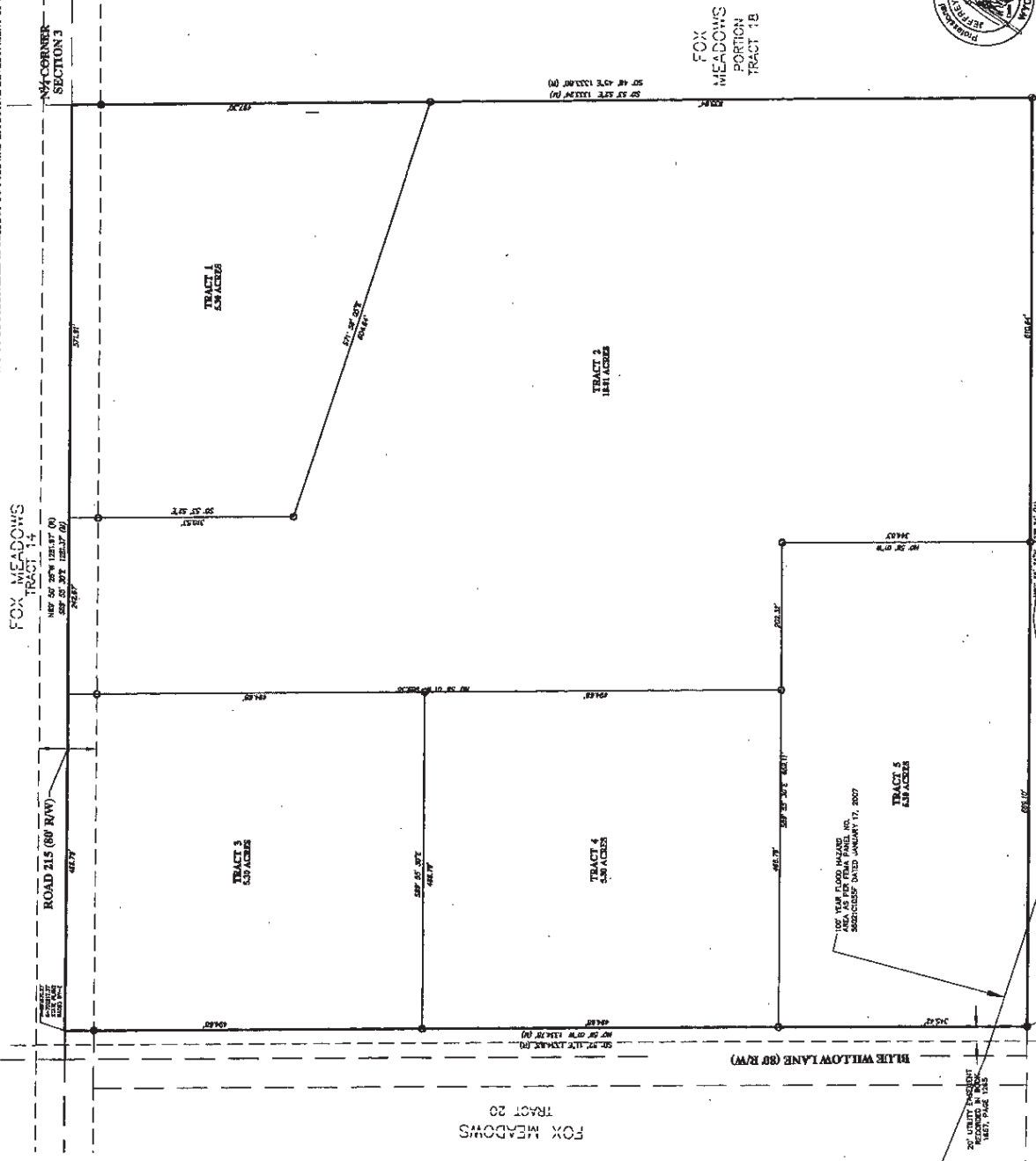


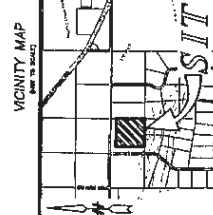
NO PUBLIC DOMESTIC WATER OR SANITARY SEWER SERVICES - FIRE PROTECTION TO BE PROVIDED BY LARAMIE COUNTY FIRE DISTRICT #4 - THIS SURFACE ESTATE OF THE LAND TO BE SUBDIVIDED IS SUBJECT TO FULL AND EFFECTIVE DEVELOPMENT OF THE MINERAL ESTATE -

- LEGEND**
- 1" ALUMINUM CAP STAMPED "SS PLS 9610"
  - 1" ALUMINUM CAP STAMPED "SS PLS 9610"
  - FOUND ALUMINUM CAP STAMPED PLS 2000
  - FOUND ALUMINUM CAP STAMPED PLS 2000
  - (H) DIGITES MEASURED DATA THIS SURVEY
  - (N) DIGITES RECORDED DATA



- GENERAL NOTES**
1. BOUNDS OF MEADOWS - NORTH LINE OF SECTION 3, HAVING A CORNER AT THE INTERSECTION OF THE NORTH LINE OF SECTION 3 AND EAST LINE OF SECTION 3, BEING THE POINT OF BEGINNING OF THE SURVEY. ALL DISTANCES ARE GIVEN DISTANCES. CORRECTION FACTOR = 0.99999997.
  2. ALL UNMOUNTED LOT CORNERS, WHEEL POINTS, AND POINTS OF BEGINNING OF THE SURVEY, SHALL BE MARKED WITH ALUMINUM CAP STAMPED "SS PLS 9610" OR "SS PLS 2000".
  3. TRACT 1-4 ARE NOT ENCOURAGED BY A 100-YEAR SPECIAL ENCOURAGEMENT TO BE FILED WITH THE STATE OF WYOMING DEPARTMENT OF REVENUE, DIVISION OF LANDS, ON OR BEFORE JANUARY 17, 2007.
  4. A SMALL PORTION OF THE SOUTH-WEST CORNER OF TRACT 4 IS ENCOURAGED BY A 100-YEAR SPECIAL ENCOURAGEMENT TO BE FILED WITH THE STATE OF WYOMING DEPARTMENT OF REVENUE, DIVISION OF LANDS, ON OR BEFORE JANUARY 17, 2007.
  5. TRACTS 1-5 TO BE RESPONSIBLE FOR SEWER, WATER, AND WATER SUPPLY, PRIVATE SEWER SYSTEMS AND WELLS ARE TO BE FILED.
  6. THIS SITE IS LOCATED IN A LOW CHMP FUEL LOAD MEDIA.

83415A  
 The State of Wyoming  
 County of Laramie  
 This instrument was filed for record on this day of December, 2021.  
 A.D. 2021, and duly recorded in  
 Book 12, Page 111.  
 County Clerk  
 Approved by the Board of Laramie County Commissioners of Laramie County, Wyoming, this day of December, 2021.  
 Chairman  
 County Clerk



**DEDICATION**

BEFORE ALL PERSONS BY THESE PRESENTS THAT I, the undersigned, do hereby dedicate to the public use of the State of Wyoming, the land described in the foregoing plat, to-wit: the land described in the plat, Laramie County, Wyoming, more particularly described as:

Section 3, Government Lot 3, EXCEPT the West 40.00 feet, Township 14 North, Range 65 West of the 6th P.M., Laramie County, Wyoming, more particularly described as:

Tract 1, 4.58 Acres, Township 14 North, Range 65 West of the 6th P.M., Laramie County, Wyoming, more particularly described as:

Tract 2, 1.81 Acres, Township 14 North, Range 65 West of the 6th P.M., Laramie County, Wyoming, more particularly described as:

Tract 3, 4.53 Acres, Township 14 North, Range 65 West of the 6th P.M., Laramie County, Wyoming, more particularly described as:

Tract 4, 4.54 Acres, Township 14 North, Range 65 West of the 6th P.M., Laramie County, Wyoming, more particularly described as:

Tract 5, 4.54 Acres, Township 14 North, Range 65 West of the 6th P.M., Laramie County, Wyoming, more particularly described as:

And I do hereby certify that the above described land is not subject to any lien, mortgage, or other claim of any person, and that the same is free and clear of all such claims, and that the same is being dedicated to the public use of the State of Wyoming, and that the monuments found or set are as shown.

*Brett L. Bauman*  
 Brett L. Bauman  
 Tamara L. Bauman

**OWNER ACKNOWLEDGEMENT**

STATE OF WYOMING }  
 COUNTY OF LARAMIE }  
 The foregoing instrument was acknowledged before me this 20th day of December, 2021, by Brett L. Bauman and Tamara L. Bauman, husband and wife.  
 My Commission Expires: 12/31/2022

**CERTIFICATE OF SURVEYOR**

I, Jeffrey B. Jones, a Professional Land Surveyor in the State of Wyoming, for and on the behalf of the Surveying Firm of Jeffrey B. Jones & Associates, P.C., do hereby certify that this map was prepared from field notes taken during an actual survey made by me or under my direct supervision, and that the monuments found or set are as shown.

**BAUMAN SUBDIVISION**

A PLAT OF LAND  
 SITUATED IN SECTION 3, T14N, R65W,  
 6th P.M., AKA TRACT 19, FOX MEADOWS  
 RECORD OF SURVEY  
 LARAMIE COUNTY, WYOMING

PREPARED September, 2021

**STEIL SURVEYING SERVICES, LLC**  
 PROFESSIONAL LAND SURVEYORS  
 PLANNING & DEVELOPMENT SPECIALISTS  
 1105 WEST 19th ST. CHEYENNE, WY. 82001 • (307) 634-7879  
 756 GILCHRIST ST. WHEATLAND, WY. 82201 • (307) 828-9789  
 www.SteilSurvey.com • info@SteilSurvey.com

**APPROVALS**

Approved by the Board of Laramie County Planning Commission, this 20th day of December, 2021.

*Debra Kelly*  
 Chairman  
 Approved by the Board of Laramie County Commissioners of Laramie County, Wyoming, this day of December, 2021.  
*Debra Kelly*  
 County Clerk

**FILING RECORD**

83415A  
 The State of Wyoming  
 County of Laramie  
 This instrument was filed for record on this day of December, 2021.  
 A.D. 2021, and duly recorded in  
 Book 12, Page 111.  
 County Clerk

REVISION: 3/25/2022  
 21277-B-BAUMAN TR 19 FOX MEADOWS.DWG