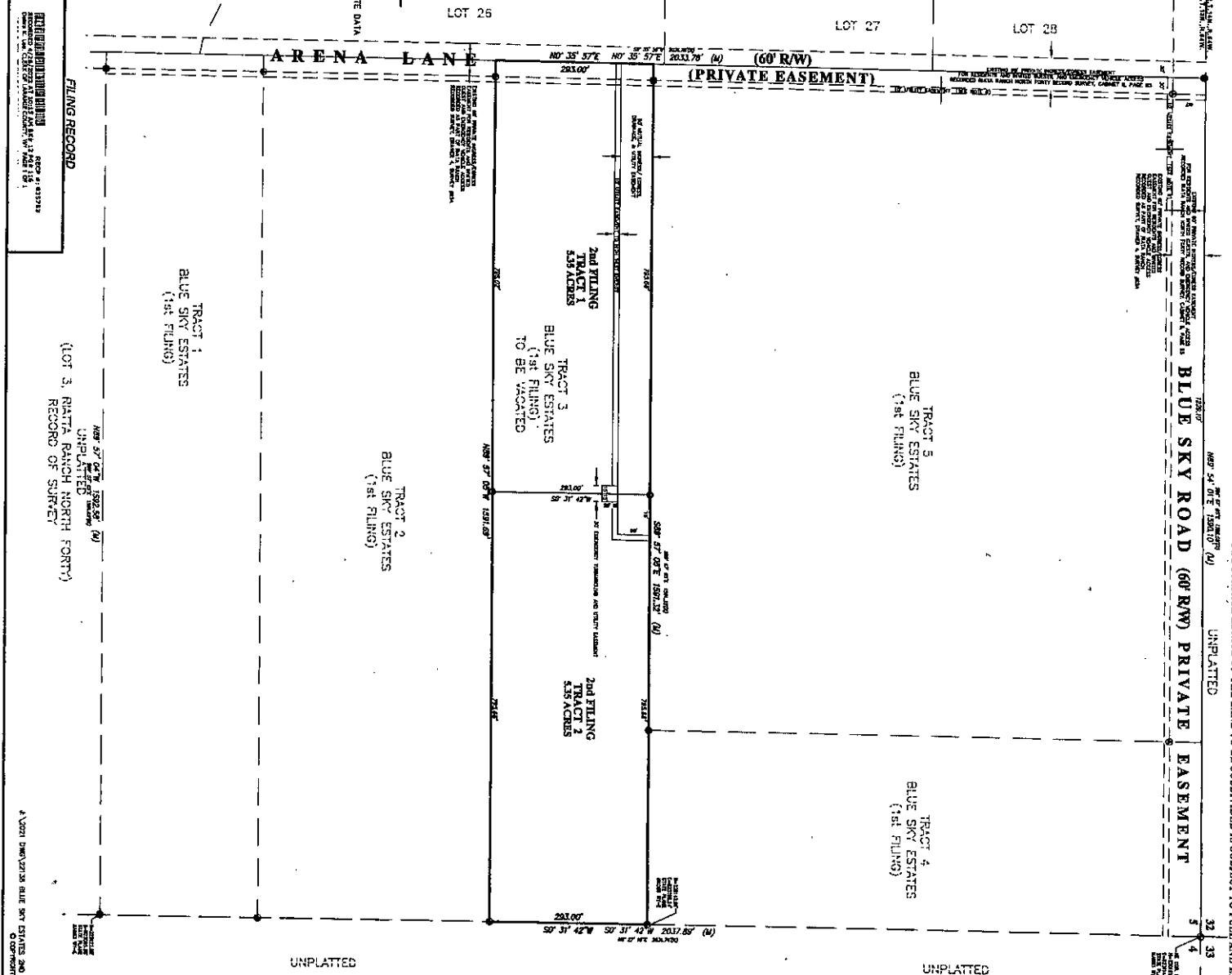
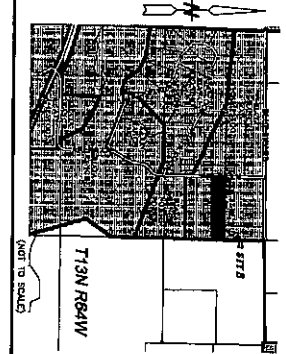


VACATION STATEMENT

It is the intent of this replat to vacate Tract 3, Blue Sky Estates, Recorded 11/20/2018, Book 2603, Page 1530, (ALL EASEMENTS TO REMAIN)

- LEGEND**
- O SET 1/2" ALUMINUM CAP STAMPED "SS RLS 5010" ON "7-24" REBAR
 - FOUND 1/2" ALUMINUM CAP STAMPED "S REBAR" & APPROPRIATE DATA
 - FOUND 3" ALUMINUM CAP STAMPED "S 5000" & APPROPRIATE DATA
 - FOUND 1/2" ALUMINUM CAP STAMPED "S 5010"
 - NO CORRESPONDING DATA
 - NO CORRESPONDING DATA

VICINITY MAP



DEDICATION

NOTICE: ALL PROPOSED BY THESE RECORDS, INCLUDING THIS DEVELOPMENT, ARE A PART OF THE SURFACE ESTATE OF THE LAND TO BE SUBDIVIDED. THE SURFACE ESTATE OF THE LAND TO BE SUBDIVIDED IS SUBJECT TO FULL AND EFFECTIVE DEVELOPMENT OF THE MINERAL ESTATES.

This plat is subject to the terms and conditions of the deed of dedication recorded in Public Book 2603, Page 1530, dated 11/20/2018, by the State of Indiana, which dedication is hereby accepted by the State of Indiana, effective as to the date of recording of this plat. All other dedications are hereby accepted by the State of Indiana, effective as to the date of recording of this plat.

I, John B. Stewart, Member of Board of Development, LLC, do hereby certify that the above described property is being dedicated to the public use of the State of Indiana for the purpose of the dedication set forth in the deed of dedication recorded in Public Book 2603, Page 1530, dated 11/20/2018, and that the dedication is hereby accepted by the State of Indiana, effective as to the date of recording of this plat.

John B. Stewart, Member of Board of Development, LLC

ACKNOWLEDGEMENTS

STATE OF INDIANA
COUNTY OF LARAME } SS

The foregoing instrument was acknowledged before me this 31st day of April, 2022

by John B. Stewart, Member of Board of Development, LLC

My Commission Expires: May 11, 2024

APPROVALS

Approved by the Larame County Planning Director this 31st day of April, 2022

[Signature]
Larame County Planning Director

Approved by the Public Works Director of Larame County, Wyoming this 31st day of April, 2022

[Signature]
Public Works Director

COUNTY ACKNOWLEDGEMENT

STATE OF WYOMING } SS
COUNTY OF LARAME } SS

The foregoing instrument was acknowledged before me this 31st day of April, 2022, by John B. Stewart, Member of Board of Development, LLC, Larame County Planning Director and John B. Stewart, Member of Board of Development, LLC, Larame County Public Works Director.

Witness my hand and the Seal of Larame County, Wyoming this 31st day of April, 2022.

[Signature]
Larame County Clerk

NOTES

1. SET 1/2" ALUMINUM CAP STAMPED "SS RLS 5010" ON "7-24" REBAR.
2. ALL TRACT BOUNDARIES ARE SHOWN AS SHOWN ON THIS PLAN. THE SETTING OF ALL TRACT BOUNDARIES AND CORNER POINTS TO BE MARKED WITH A SET OF ALUMINUM CAP STAMPED "SS RLS 5010" ON A 5/8" 2-3/4" LONG REBAR. MADE POINTS AND CORNER POINTS TO BE MARKED WITH A SET OF ALUMINUM CAP STAMPED "SS RLS 5010" ON A 5/8" 2-3/4" LONG REBAR. MADE POINTS AND CORNER POINTS TO BE MARKED WITH A SET OF ALUMINUM CAP STAMPED "SS RLS 5010" ON A 5/8" 2-3/4" LONG REBAR. MADE POINTS AND CORNER POINTS TO BE MARKED WITH A SET OF ALUMINUM CAP STAMPED "SS RLS 5010" ON A 5/8" 2-3/4" LONG REBAR.
3. NO PORTION OF THIS PLAT FALLS WITHIN A FEMA SPECIAL FLOOD HAZARD AREA AS SHOWN ON FEMA PANEL 104 30970106. 2007. SALES/TAXPAYER: DATED JANUARY 17, 2022.
4. ALL WELLS AND SPRING SYSTEMS SHALL COMPLY WITH ALL APPLICABLE REGULATIONS, RULES AND REGULATIONS.
5. REMOVE EXISTING OR NEW UTILITIES (E.G., WATER LINES, GAS LINES, ETC.) AS NECESSARY AND AS SHOWN AND DESCRIBED HEREON.
6. UTILITIES EXISTING OR TO BE INSTALLED IN THIS COUNTY (E.G., WATER LINES, GAS LINES, ETC.) SHALL BE INSTALLED AND AS SHOWN AND DESCRIBED HEREON.
7. CURE - SURFACE ESTATE DOES NOT REST IN THE LARAME COUNTY CURE.

CERTIFICATE OF SURVEYOR

I, Jeffrey B. James, a Professional Land Surveyor in the State of Wyoming, for and on behalf of Steel Surveying Services, LLC hereby certify that this plat was prepared and filed in accordance with the provisions of the Wyoming Statutes, Title 2, Chapter 5, and that the map correctly shows the results of a survey conducted in accordance with the provisions of the Wyoming Statutes, Title 2, Chapter 5, and that the map correctly shows the results of a survey conducted in accordance with the provisions of the Wyoming Statutes, Title 2, Chapter 5.

My Commission Expires: 3/31/2023

Jeffrey B. James
Professional Land Surveyor



BLUE SKY ESTATES, 2ND FILING

AN ADMINISTRATIVE REPLAT OF ALL OF TRACT 3, BLUE SKY ESTATES, SITUATED IN THE NE 1/4 SECTION 5, T13N R64W, S32E, LARAME COUNTY, WYOMING

PREPARED NOVEMBER, 2021

STEEL SURVEYING SERVICES, LLC

PROFESSIONAL LAND SURVEYORS
PLANNING & DEVELOPMENT SPECIALISTS

1108 WEST 14th ST, CHEYENNE, WY 82001 • (307) 634-2722
748 GILCHRIST ST, WHEATLAND, WY 82201 • (307) 222-5718

www.steelss.com • info@steelss.com