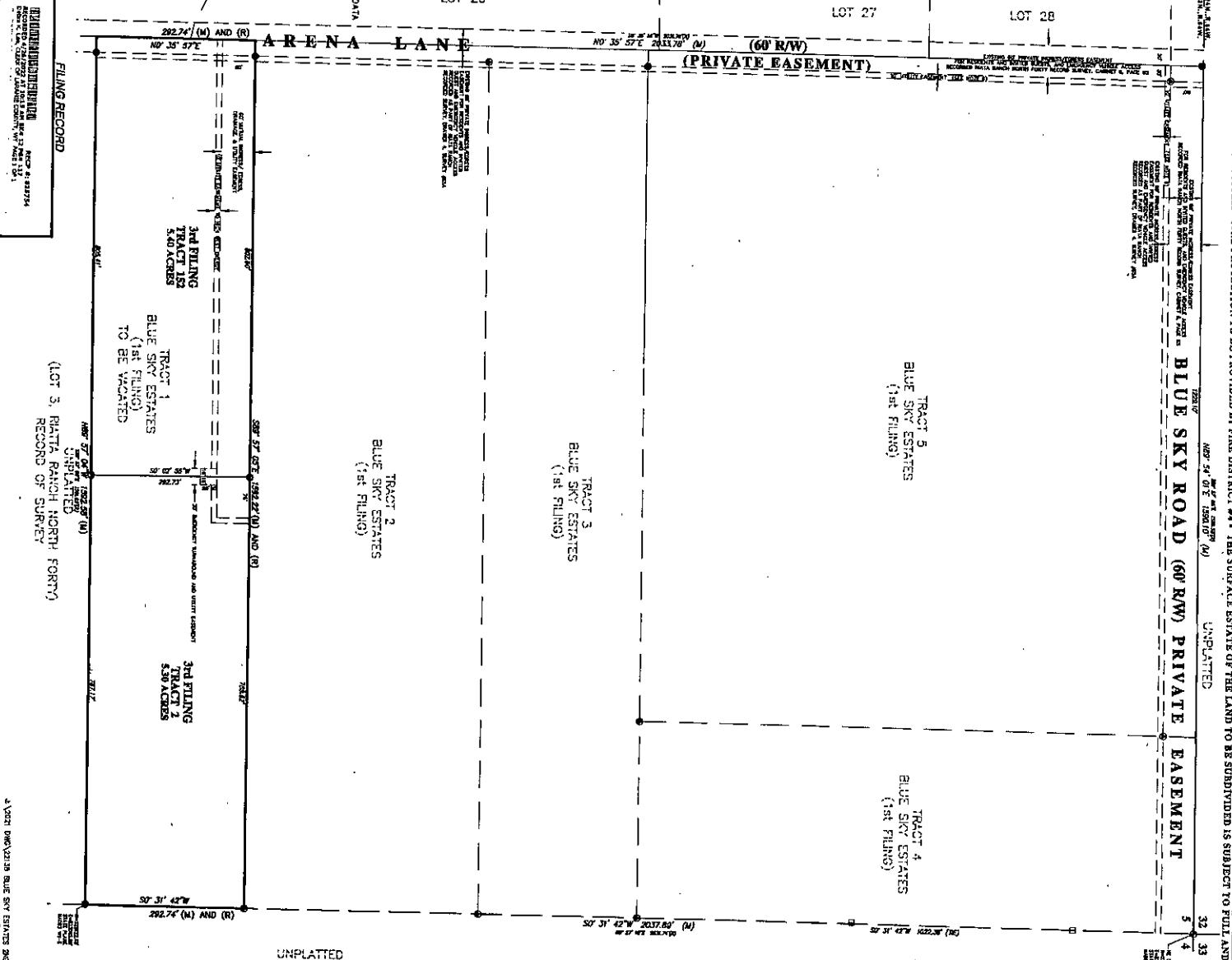
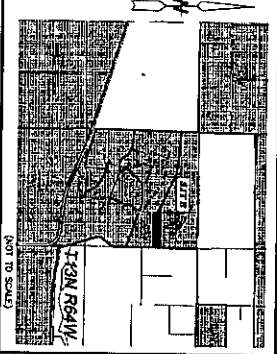


VACATION STATEMENT
 It is the intent of this report to vacate
 Tract 1, Blue Sky Estates, Recorded
 11/20/2018, Book 2803, Page 1530.
 (ALL EASEMENTS TO REMAIN)

- LEGEND**
- SET 1/2" ALUMINUM CAP STAMPED "S&S P.L.S. SURV. OR S. 20" MARK
 - FOUND 1/2" ALUMINUM CAP STAMPED "S&S MARK & APPROXIMATE DATA
 - FOUND 2" ALUMINUM CAP STAMPED "S 5000" & APPROXIMATE DATA
 - FOUND 1 1/2" ALUMINUM CAP STAMPED "S 5910"
 - CORNER MARKED DATA
 - CORNER RECORD DATA



DEDICATION
 I, Jeffrey B. Jones, a Professional Land Surveyor in the State of Wyoming, do hereby certify that the above described land is being dedicated to the public use of the State of Wyoming as shown on the attached plat. This dedication is subject to the following conditions:
 1. ALL TRACT CORNERS SHALL BE MARKED WITH A SET 1/2" ALUMINUM CAP STAMPED "S&S P.L.S. SURV. OR S. 20" MARK OR A 2" X 2" X 1/4" WOOD NAIL.
 2. ALL TRACT CORNERS SHALL BE MARKED WITH A 2" X 2" X 1/4" WOOD NAIL.
 3. NO PORTION OF THE PLAT SHALL BE WITHDRAWN FROM PUBLIC USE.
 4. ALL WELLS AND SPRINGS SHALL BE KEPT OPEN AND MAINTAINED IN A SAFE AND SOUND CONDITION.
 5. THE DEDICATED LAND SHALL BE KEPT OPEN AND MAINTAINED IN A SAFE AND SOUND CONDITION.
 6. THE DEDICATED LAND SHALL BE KEPT OPEN AND MAINTAINED IN A SAFE AND SOUND CONDITION.
 7. THE DEDICATED LAND SHALL BE KEPT OPEN AND MAINTAINED IN A SAFE AND SOUND CONDITION.
 8. THE DEDICATED LAND SHALL BE KEPT OPEN AND MAINTAINED IN A SAFE AND SOUND CONDITION.
 9. THE DEDICATED LAND SHALL BE KEPT OPEN AND MAINTAINED IN A SAFE AND SOUND CONDITION.
 10. THE DEDICATED LAND SHALL BE KEPT OPEN AND MAINTAINED IN A SAFE AND SOUND CONDITION.

ACKNOWLEDGEMENTS
 STATE OF WYOMING }
 COUNTY OF LARAMIE }
 I, Jeffrey B. Jones, a Professional Land Surveyor in the State of Wyoming, do hereby certify that the above described land is being dedicated to the public use of the State of Wyoming as shown on the attached plat. This dedication is subject to the following conditions:
 1. ALL TRACT CORNERS SHALL BE MARKED WITH A SET 1/2" ALUMINUM CAP STAMPED "S&S P.L.S. SURV. OR S. 20" MARK OR A 2" X 2" X 1/4" WOOD NAIL.
 2. ALL TRACT CORNERS SHALL BE MARKED WITH A 2" X 2" X 1/4" WOOD NAIL.
 3. NO PORTION OF THE PLAT SHALL BE WITHDRAWN FROM PUBLIC USE.
 4. ALL WELLS AND SPRINGS SHALL BE KEPT OPEN AND MAINTAINED IN A SAFE AND SOUND CONDITION.
 5. THE DEDICATED LAND SHALL BE KEPT OPEN AND MAINTAINED IN A SAFE AND SOUND CONDITION.
 6. THE DEDICATED LAND SHALL BE KEPT OPEN AND MAINTAINED IN A SAFE AND SOUND CONDITION.
 7. THE DEDICATED LAND SHALL BE KEPT OPEN AND MAINTAINED IN A SAFE AND SOUND CONDITION.
 8. THE DEDICATED LAND SHALL BE KEPT OPEN AND MAINTAINED IN A SAFE AND SOUND CONDITION.
 9. THE DEDICATED LAND SHALL BE KEPT OPEN AND MAINTAINED IN A SAFE AND SOUND CONDITION.
 10. THE DEDICATED LAND SHALL BE KEPT OPEN AND MAINTAINED IN A SAFE AND SOUND CONDITION.

COUNTY ACKNOWLEDGEMENT
 STATE OF WYOMING }
 COUNTY OF LARAMIE }
 I, Jeffrey B. Jones, a Professional Land Surveyor in the State of Wyoming, do hereby certify that the above described land is being dedicated to the public use of the State of Wyoming as shown on the attached plat. This dedication is subject to the following conditions:
 1. ALL TRACT CORNERS SHALL BE MARKED WITH A SET 1/2" ALUMINUM CAP STAMPED "S&S P.L.S. SURV. OR S. 20" MARK OR A 2" X 2" X 1/4" WOOD NAIL.
 2. ALL TRACT CORNERS SHALL BE MARKED WITH A 2" X 2" X 1/4" WOOD NAIL.
 3. NO PORTION OF THE PLAT SHALL BE WITHDRAWN FROM PUBLIC USE.
 4. ALL WELLS AND SPRINGS SHALL BE KEPT OPEN AND MAINTAINED IN A SAFE AND SOUND CONDITION.
 5. THE DEDICATED LAND SHALL BE KEPT OPEN AND MAINTAINED IN A SAFE AND SOUND CONDITION.
 6. THE DEDICATED LAND SHALL BE KEPT OPEN AND MAINTAINED IN A SAFE AND SOUND CONDITION.
 7. THE DEDICATED LAND SHALL BE KEPT OPEN AND MAINTAINED IN A SAFE AND SOUND CONDITION.
 8. THE DEDICATED LAND SHALL BE KEPT OPEN AND MAINTAINED IN A SAFE AND SOUND CONDITION.
 9. THE DEDICATED LAND SHALL BE KEPT OPEN AND MAINTAINED IN A SAFE AND SOUND CONDITION.
 10. THE DEDICATED LAND SHALL BE KEPT OPEN AND MAINTAINED IN A SAFE AND SOUND CONDITION.

APPROVALS
 Approved by the Laramie County Planning Director this 10th day of April, 2022.
 Approved by the Laramie County Public Works Director of Laramie County, Wyoming this 10th day of April, 2022.
 Approved by the Laramie County Planning Director this 10th day of April, 2022.
 Approved by the Laramie County Public Works Director of Laramie County, Wyoming this 10th day of April, 2022.

CERTIFICATE OF SURVEYOR
 I, Jeffrey B. Jones, a Professional Land Surveyor in the State of Wyoming, do hereby certify that the above described land is being dedicated to the public use of the State of Wyoming as shown on the attached plat. This dedication is subject to the following conditions:
 1. ALL TRACT CORNERS SHALL BE MARKED WITH A SET 1/2" ALUMINUM CAP STAMPED "S&S P.L.S. SURV. OR S. 20" MARK OR A 2" X 2" X 1/4" WOOD NAIL.
 2. ALL TRACT CORNERS SHALL BE MARKED WITH A 2" X 2" X 1/4" WOOD NAIL.
 3. NO PORTION OF THE PLAT SHALL BE WITHDRAWN FROM PUBLIC USE.
 4. ALL WELLS AND SPRINGS SHALL BE KEPT OPEN AND MAINTAINED IN A SAFE AND SOUND CONDITION.
 5. THE DEDICATED LAND SHALL BE KEPT OPEN AND MAINTAINED IN A SAFE AND SOUND CONDITION.
 6. THE DEDICATED LAND SHALL BE KEPT OPEN AND MAINTAINED IN A SAFE AND SOUND CONDITION.
 7. THE DEDICATED LAND SHALL BE KEPT OPEN AND MAINTAINED IN A SAFE AND SOUND CONDITION.
 8. THE DEDICATED LAND SHALL BE KEPT OPEN AND MAINTAINED IN A SAFE AND SOUND CONDITION.
 9. THE DEDICATED LAND SHALL BE KEPT OPEN AND MAINTAINED IN A SAFE AND SOUND CONDITION.
 10. THE DEDICATED LAND SHALL BE KEPT OPEN AND MAINTAINED IN A SAFE AND SOUND CONDITION.

STEELE SURVEYING SERVICES, LLC
 PROFESSIONAL LAND SURVEYORS
 PLANNING & DEVELOPMENT SPECIALISTS
 1108 WEST 18th ST. CHEYENNE, WY 82001 • (307) 634-2722
 726 GILCHRIST ST. WILMINGTON, WY 82401 • (307) 521-2718
 www.steelesurveying.com • info@steelesurveying.com

REVISION: 4/10/2022
 4.10.21 (60')/2.10.22 BLUE SKY ESTATES 2ND FILING (60' R/W) AREAS
 0.10.21 (60')/2.10.22 BLUE SKY ESTATES 1ST FILING (60' R/W) AREAS