



JOB NO. 2-1726
 DESIGNED BY: _____
 REVIEWED BY: _____
 APPROVED BY: _____
 DATE: MAY 1982

PROJECT TITLE: PLAT OF DEDICATION FOR A PORTION OF LOT 3, BLOCK 2, CAMELOT ESTATE FIRST FILING, CHEYENNE, WYOMING.
 CLIENT: CITY OF CHEYENNE

LEGAL DESCRIPTION, LOT "A"
 A PORTION OF LAND BEING A PORTION OF LOT 3, BLOCK 2, CAMELOT ESTATES FIRST FILING, CHEYENNE, WYOMING, BEING MORE PARTICULARLY DESCRIBED AS FOLLOWS:
 BEGINNING AT THE SOUTHWEST CORNER OF LOT 3, BLOCK 2, CAMELOT ESTATES FIRST FILING;
 THENCE N 01°04' W ALONG THE WEST LINE OF SAID LOT 3, BLOCK 2 AND THE EAST RIGHT-OF-WAY OF CONVERSE AVENUE, A DISTANCE OF 21.00 FEET TO A POINT;
 THENCE S 70°20'48" E, A DISTANCE OF 74.41 FEET TO A POINT ON THE SOUTH LINE OF SAID LOT 3, BLOCK 2, SAID POINT BEING 74.50 FEET FROM THE SOUTH WEST CORNER OF SAID LOT 3, BLOCK 2;
 THENCE N 89°00'00" W ALONG THE SOUTH LINE OF SAID LOT 3, BLOCK 2, A DISTANCE OF 74.00 FEET TO THE POINT OF BEGINNING.
 SAID PARCEL CONTAINS 0.08 ACRES, MORE OR LESS.

DEDICATION
 KNOW ALL MEN BY THESE PRESENTS THAT CHEYENNE JOINT VENTURE, OWNER IN FEEL OF THE LAND EMPLOYED BY THIS PLAT OF LOTS 2, 3, AND 4 OF BLOCK 2, CAMELOT ESTATES FIRST FILING, CHEYENNE, WYOMING, HAS HEREBY DEDICATED TO THE PUBLIC FOR THE USE OF THE PUBLIC FOR THE SAID LAND DESCRIBED ON THIS PLAT.
 IN WITNESS WHEREOF, I, DONALD W. ROSSER, ENGINEER, REPRESENTATIVE OF CHEYENNE JOINT VENTURE, HAVE HEREBY SET MY HAND AND SEAL OF CHEYENNE, A MUNICIPAL CORPORATION ON THIS 4th DAY OF MAY, 1982.

Donald W. Rosser
 DONALD W. ROSSER
 CHEYENNE JOINT VENTURE
 CIVIL ENGINEER
 1000 SHEPHERD EVANGELICAL LUTHERAN CHURCH
 CHEYENNE, WYOMING 82001
 STATE OF WYOMING
 COUNTY OF LARAMIE

ACKNOWLEDGMENT
 STATE OF WYOMING }
 COUNTY OF LARAMIE }

THE DEDICATION INSTRUMENT WAS ACKNOWLEDGED BEFORE ME BY DONALD W. ROSSER, ENGINEER, REPRESENTATIVE OF CHEYENNE JOINT VENTURE, AND DONALD W. ROSSER, REPRESENTATIVE OF CHEYENNE, A MUNICIPAL CORPORATION ON THIS 4th DAY OF MAY, 1982.



NOTARY PUBLIC: *Donald W. Rosser*
 MY COMMISSION EXPIRES: December 4, 1985

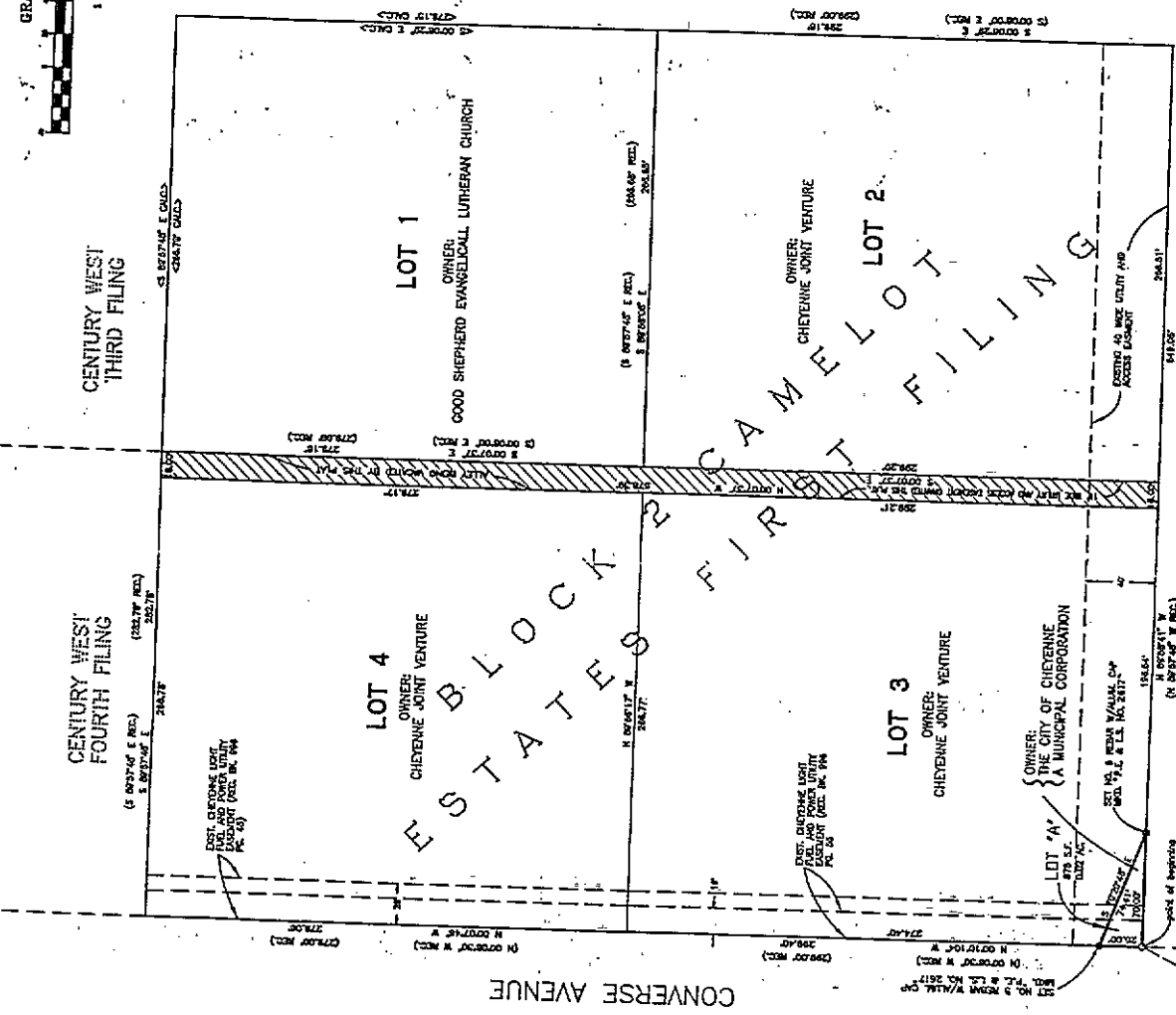
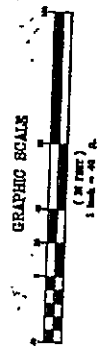
BASIS OF BEARING
 CITY CONTROL DATUM

APPROVALS
 APPROVED BY THE CHEYENNE-LARAMIE COUNTY PLANNING COMMISSION THIS 24th DAY OF MAY, 1982.
 DEVELOPMENT DIRECTOR: _____



APPROVED BY THE CITY COUNCIL OF THE CITY OF CHEYENNE, WYOMING THIS 24th DAY OF MAY, 1982.
 Mayor: _____
 City Clerk: _____

NOTES
 THE ALLEY SHOWN CROSS HATCHED ON THIS PLAT IS HEREBY DEDICATED TO THE CITY OF CHEYENNE AS A UTILITY AND ACCESS EASEMENT.



**PLAT OF
 CONVERSE AVE. - ADDITIONAL
 A PORTION OF LOTS 3, BLOCK 2,
 CAMELOT ESTATES FIRST FILING**

BEING SITUATED IN SUB. 17, C.P.

FILING RECORD

Number	1982-14
City of Cheyenne	
County of Laramie	
This instrument was filed for record on the 24th day of May, 1982, at 10:30 A.M. in the City of Cheyenne, Wyoming.	
City Clerk	<i>Gene Heston</i>



SURVEYOR'S CERTIFICATE
 I, JAMES D. WOODLEY, A REGISTERED ENGINEER AND LAND SURVEYOR IN THE STATE OF WYOMING, HEREBY CERTIFY THAT THIS MAP WAS PREPARED FROM A SURVEY MADE BY ME OR UNDER MY CLOSE PERSONAL SUPERVISION AND FROM SURVEYS FOR LOTS 2, 3, AND 4, BLOCK 2 OF CAMELOT ESTATES FIRST FILING, CHEYENNE, WYOMING, AND THAT I AM A LICENSED SURVEYOR IN THE STATE OF WYOMING. THE SURVEY WAS MADE ON THE BASIS OF KNOWLEDGE, INFORMATION AND BELIEF. THE SURVEYOR HAS COMPLIED WITH ALL REQUIREMENTS OF THE STATE OF WYOMING AND ALL APPLICABLE STATUTES AND RULES AND TABLES SHOW HEREON ARE A PART OF THIS INSTRUMENT AND THIS MAP ACCORDINGLY DEPOSITS THE RESULTS OF SAID SURVEY.

CITY DATUM "BASEBALL"
 7-6072130
 7-7886886