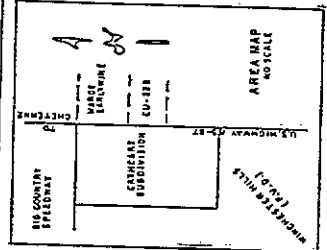


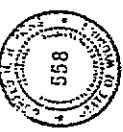
Surveyed for:  
 RICHARD L. ROBERT CATHCART  
 U.S. HIGHWAY 85, ROAD  
 CHEYENNE, WYOMING



**CERTIFICATE OF SURVEYOR**

STATE OF WYOMING  
 COUNTY OF LARAMIE

I, Donald M. Hopkins, a Professional Engineer and Land Surveyor, registered in the State of Wyoming, hereby certify that this plat was made from notes of a survey made under my direction and completed on the 20th day of FEBRUARY, 1987, and that said survey is accurately represented on this plat as staked in the field.



*Donald M. Hopkins*  
 WYOMING REGISTRATION NO. 558

**LAND DESCRIPTION**

A Subdivision of land in Sections 20 and 29, T. 13 N., R. 66 W., 6th P.M., Laramie County, Wyoming, described as follows: Beginning at a point S 89°08'45" E a distance of 1806.53' from the northwest corner of Section 29; Thence N 89°08'45" E a distance of 913.67' along the north line of Section 29; Thence S 87°05'45" W a distance of 1077.20' feet, along the Highway right of way; Thence S 87°05'45" W a distance of 45.92' feet; Thence S 2°34'45" E a distance of 330.52' feet; Thence N 89°08'45" W a distance of 427.71' feet; Thence N 0°20'03" W a distance of 290.00' feet; Thence N 89°08'45" W a distance of 80.00' feet; Thence S 0°20'03" E a distance of 280.07' feet; Thence N 89°08'45" W a distance of 44.60' feet; Thence N 0°31'15" E a distance of 1338.14' feet, to the point of beginning; and: Beginning at a point S 89°08'45" E a distance of 1806.53' feet from the Northwest corner of Section 29; Thence N 0°51'15" E a distance of 40.00' feet; Thence S 89°08'45" E a distance of 911.11' feet; Thence S 2°48'15" E a distance of 40.08' feet; Thence N 89°08'45" W a distance of 913.67' feet to the point of beginning. Said Subdivision containing 29.458 acres, more or less.

**DEDICATION**

I, the undersigned, do hereby dedicate to the public for use as a public utility, the roads shown hereon, and do also grant the easements shown for the use of public utilities.

*Richard L. Cathcart*  
 RICHARD L. CATHCART  
*Ernest S. Henning*  
 ERNEST S. HENNING  
*Marylund R. Henning*  
 MARYLUND R. HENNING

**ACKNOWLEDGEMENT**

STATE OF WYOMING  
 COUNTY OF WYOMING

The foregoing dedication was acknowledged before me by the above signed persons who affirm they are the owners of the above described land and that the execution of said dedication was their own free act and deed and in accordance with their desires.

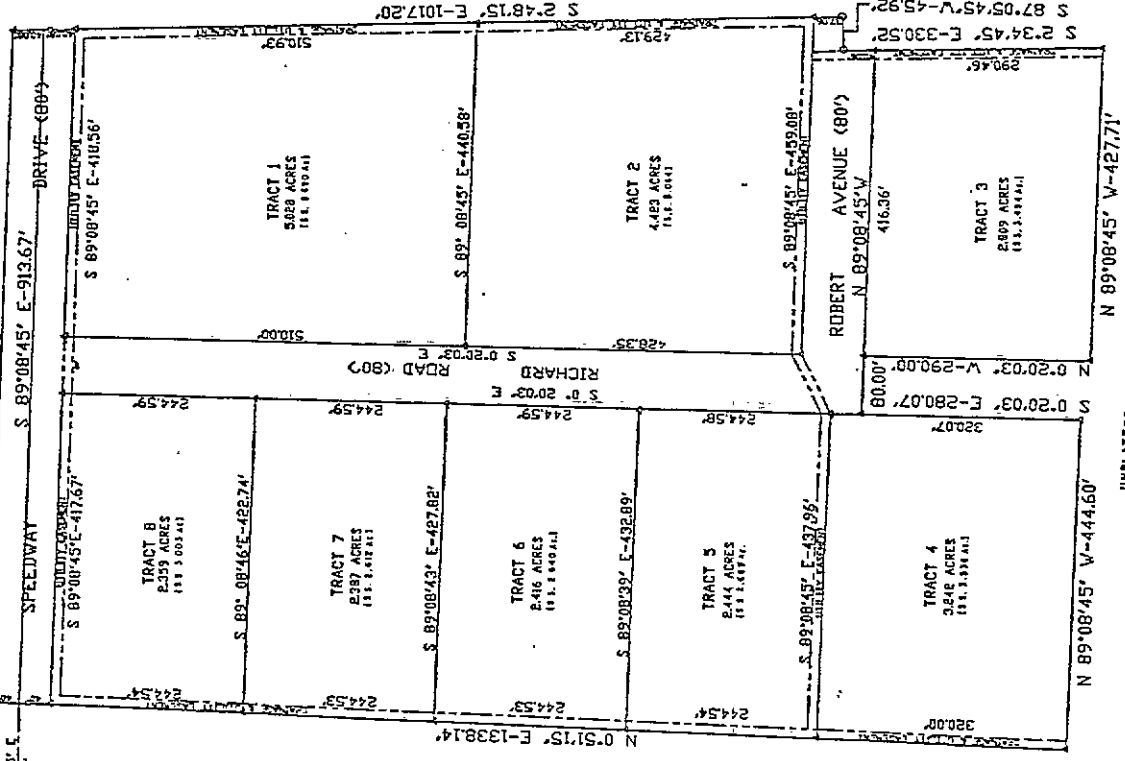
Dated this \_\_\_\_\_ day of \_\_\_\_\_ 1987.  
 Notary Public for Wyoming  
 My Commission Expires \_\_\_\_\_  
 My Residence is \_\_\_\_\_

**FILING RECORD**  
 Book 250 p 14  
 Filed for Record  
 T. 13 N., R. 66 W., 6th P.M.  
 A PARCEL IN THE NORTH ONE-HALF OF SECTION 29  
 A PARCEL IN THE SOUTH ONE-HALF OF SECTION 29

**FINAL PLAT  
 CATHCART SUBDIVISION**

U.S. HIGHWAY 85-87

U.S. HIGHWAY 85-87



NO PUBLIC WATER SYSTEM  
 NO PUBLIC SEWER SYSTEM  
 FIRE PROTECTION BY FIRE DISTRICT No. 1

NOTE: ALL EASEMENTS SHOWN ARE 10 FEET WIDE.

**APPROVALS**

APPROVED BY THE CHEYENNE-LARAMIE COUNTY PLANNING COMMISSION  
 ON THIS \_\_\_\_\_ DAY OF \_\_\_\_\_ 1987.

*[Signature]*  
 PLANNING DIRECTOR

APPROVED BY THE BOARD OF COUNTY COMMISSIONERS  
 ON THIS \_\_\_\_\_ DAY OF \_\_\_\_\_ 1987.

*[Signature]*  
 COUNTY CLERK

**LEGEND**  
 FOUND POINTS SET POINTS  
 O HIGHWAY R/W MARKER Δ 5/8" REBAR & CAP  
 □ 1/4" CEMENT POINT