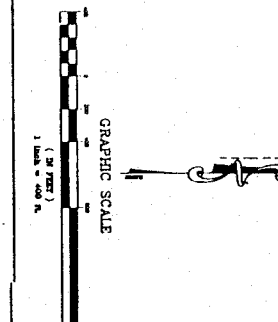


LEGAL DESCRIPTION:
 ALL OF SECTION 3 AND THE EAST ONE-HALF OF SECTION 4, TOWNSHIP 12 NORTH, RANGE 65 WEST, SECTION 3 AND 4, COUNTY OF LARAMIE, WYOMING, EXCEPTING THE LAND LINGING WITHIN THE ESTABLISHED RIGHT OF WAY OF CHALK BLUFFS ROAD, CONTAINING 991.85 ACRES, MORE OR LESS, NOT INCLUDING THE RIGHT OF WAY.

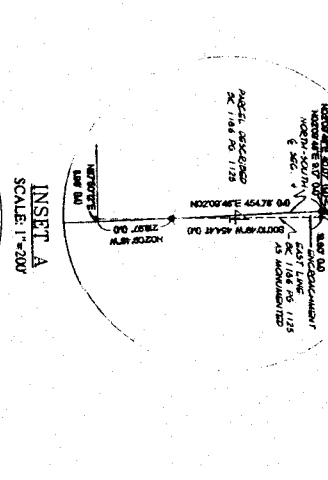
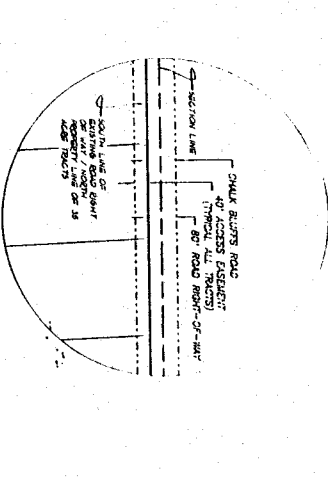
NOTES:
 1. A 2" ALUMINUM CAP STAMPED A.M.L. & W.T. 2007, 10/23, WITH ONE SET AT THE INTERSECTION OF THE TRACT LINES EXCEPT WHERE ALREADY MONUMENTED BY A DIFFERENT TYPE OF MONUMENT.
 2. CONTINUE INTERVALS AS 1 FOOT.
 3. SEE SHEET 1 FOR DETAILS OF BOUNDARY SURVEY.



MAP OF SURVEY FOR CHALK BLUFFS ESTATES
 INCLUDES THE EAST ONE-HALF OF SECTION 4 AND ALL OF SECTION 3
 T12N, R65W, OF THE 6TH P.M.,
 LARAMIE COUNTY, WYOMING.
 REPEARED OCTOBER, 2007

911
 LARAMIE COUNTY
 DEPARTMENT OF LAND MANAGEMENT
 2730
 2 of 2

CERTIFICATE OF SURVEYOR
 I, **CHALK BLUFFS ROAD**, a Registered Professional Land Surveyor in the State of Wyoming, do hereby certify that this map of survey of Chalk Bluffs Estates is a true and correct copy of the original survey as conducted in July, August and September, 2007, and that to the best of my information, knowledge, and belief, and the monuments found or set as so shown.

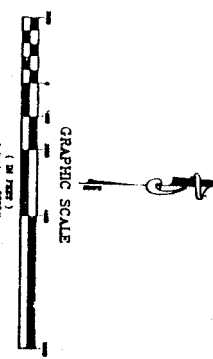
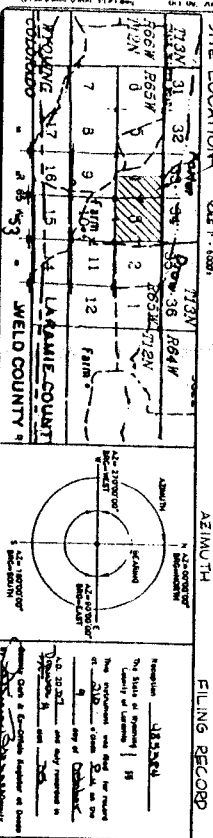


- LEGEND**
- 1 MONUMENTS FOUND ORIGINAL STONE MONUMENTS.
 - 2 MONUMENTS SET BY ALUMINUM CAP STAMPED A.M.L. & W.T. 2007, 10/23, 10/23.
 - 3 MONUMENTS SET BY ALUMINUM CAP STAMPED A.M.L. & W.T. 2007, 10/23, 10/23.
 - 4 MONUMENTS SET BY ALUMINUM CAP STAMPED A.M.L. & W.T. 2007, 10/23, 10/23.
 - 5 MONUMENTS SET BY ALUMINUM CAP STAMPED A.M.L. & W.T. 2007, 10/23, 10/23.
 - 6 MONUMENTS SET BY ALUMINUM CAP STAMPED A.M.L. & W.T. 2007, 10/23, 10/23.
 - 7 MONUMENTS SET BY ALUMINUM CAP STAMPED A.M.L. & W.T. 2007, 10/23, 10/23.
 - 8 MONUMENTS SET BY ALUMINUM CAP STAMPED A.M.L. & W.T. 2007, 10/23, 10/23.
 - 9 MONUMENTS SET BY ALUMINUM CAP STAMPED A.M.L. & W.T. 2007, 10/23, 10/23.
 - 10 MONUMENTS SET BY ALUMINUM CAP STAMPED A.M.L. & W.T. 2007, 10/23, 10/23.
 - 11 MONUMENTS SET BY ALUMINUM CAP STAMPED A.M.L. & W.T. 2007, 10/23, 10/23.
 - 12 MONUMENTS SET BY ALUMINUM CAP STAMPED A.M.L. & W.T. 2007, 10/23, 10/23.
 - 13 MONUMENTS SET BY ALUMINUM CAP STAMPED A.M.L. & W.T. 2007, 10/23, 10/23.
 - 14 MONUMENTS SET BY ALUMINUM CAP STAMPED A.M.L. & W.T. 2007, 10/23, 10/23.
 - 15 MONUMENTS SET BY ALUMINUM CAP STAMPED A.M.L. & W.T. 2007, 10/23, 10/23.
 - 16 MONUMENTS SET BY ALUMINUM CAP STAMPED A.M.L. & W.T. 2007, 10/23, 10/23.
 - 17 MONUMENTS SET BY ALUMINUM CAP STAMPED A.M.L. & W.T. 2007, 10/23, 10/23.
 - 18 MONUMENTS SET BY ALUMINUM CAP STAMPED A.M.L. & W.T. 2007, 10/23, 10/23.
 - 19 MONUMENTS SET BY ALUMINUM CAP STAMPED A.M.L. & W.T. 2007, 10/23, 10/23.
 - 20 MONUMENTS SET BY ALUMINUM CAP STAMPED A.M.L. & W.T. 2007, 10/23, 10/23.
 - 21 MONUMENTS SET BY ALUMINUM CAP STAMPED A.M.L. & W.T. 2007, 10/23, 10/23.
 - 22 MONUMENTS SET BY ALUMINUM CAP STAMPED A.M.L. & W.T. 2007, 10/23, 10/23.
 - 23 MONUMENTS SET BY ALUMINUM CAP STAMPED A.M.L. & W.T. 2007, 10/23, 10/23.
 - 24 MONUMENTS SET BY ALUMINUM CAP STAMPED A.M.L. & W.T. 2007, 10/23, 10/23.
 - 25 MONUMENTS SET BY ALUMINUM CAP STAMPED A.M.L. & W.T. 2007, 10/23, 10/23.
 - 26 MONUMENTS SET BY ALUMINUM CAP STAMPED A.M.L. & W.T. 2007, 10/23, 10/23.
 - 27 MONUMENTS SET BY ALUMINUM CAP STAMPED A.M.L. & W.T. 2007, 10/23, 10/23.
 - 28 MONUMENTS SET BY ALUMINUM CAP STAMPED A.M.L. & W.T. 2007, 10/23, 10/23.
 - 29 MONUMENTS SET BY ALUMINUM CAP STAMPED A.M.L. & W.T. 2007, 10/23, 10/23.
 - 30 MONUMENTS SET BY ALUMINUM CAP STAMPED A.M.L. & W.T. 2007, 10/23, 10/23.
 - 31 MONUMENTS SET BY ALUMINUM CAP STAMPED A.M.L. & W.T. 2007, 10/23, 10/23.
 - 32 MONUMENTS SET BY ALUMINUM CAP STAMPED A.M.L. & W.T. 2007, 10/23, 10/23.
 - 33 MONUMENTS SET BY ALUMINUM CAP STAMPED A.M.L. & W.T. 2007, 10/23, 10/23.
 - 34 MONUMENTS SET BY ALUMINUM CAP STAMPED A.M.L. & W.T. 2007, 10/23, 10/23.
 - 35 MONUMENTS SET BY ALUMINUM CAP STAMPED A.M.L. & W.T. 2007, 10/23, 10/23.

35 AC. PLUS TRACTS LOCATED IN ALL OF SEC 3 AND THE EAST ONE-HALF OF SEC 4 TOWNSHIP 12 NORTH, RANGE 65 WEST

BUTCH MARLIN
 11193 ORCHARD DRIVE
 CHEYENNE, WY. 82001

MAP OF SURVEY, CHALK BLUFFS ESTATES

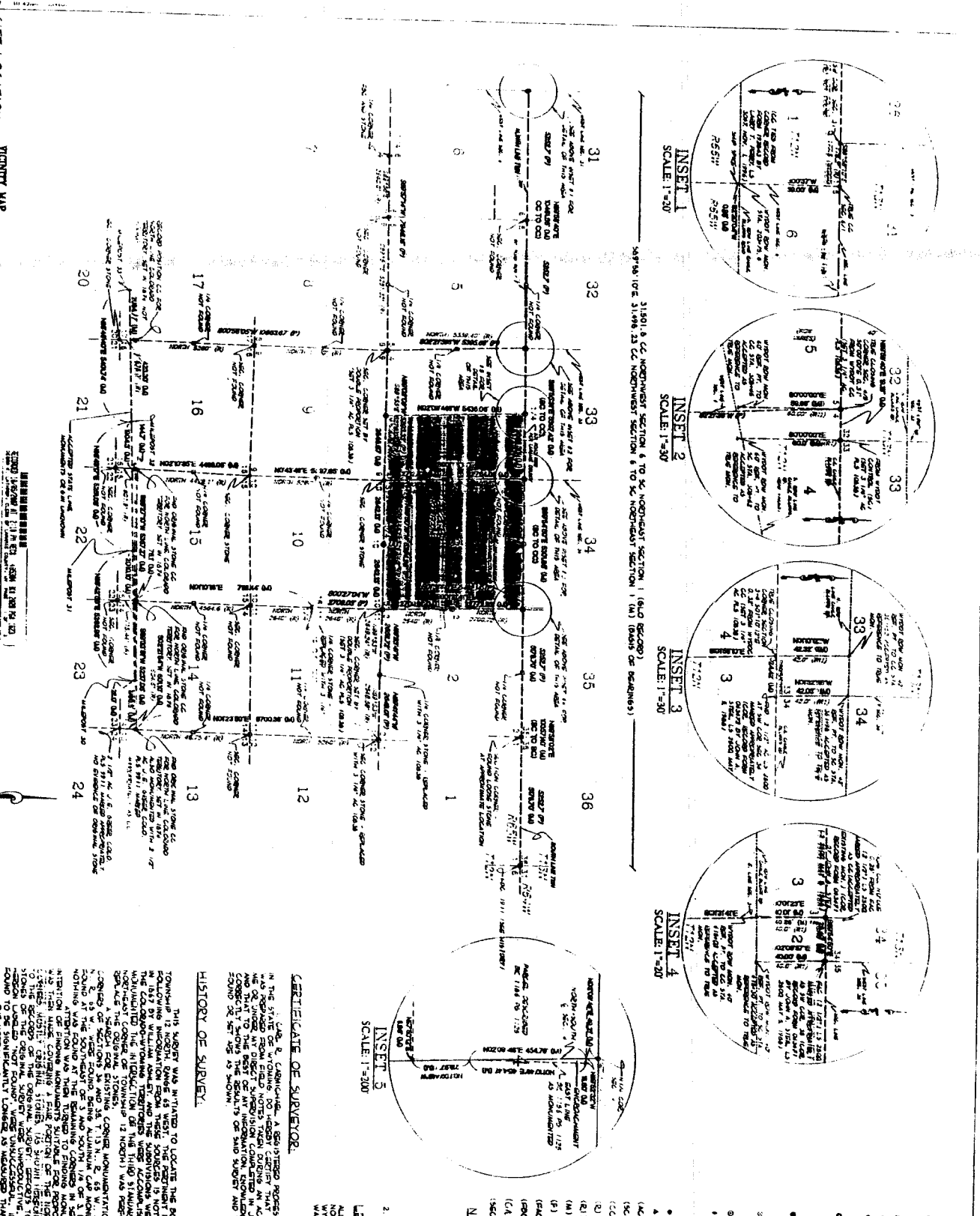


CERTIFICATE OF SURVEYOR

I, **Butch Marlin**, a Registered Professional Land Surveyor in the State of Wyoming, do hereby certify that this map or survey, as shown by direct observation and computation, and that to the best of my information, knowledge and belief, this map and report are true and correct and that the monuments shown are as shown or as described in this report.

HISTORY OF SURVEY

This report was prepared to locate the boundary lines for Section 3 and the east one-half of Section 4, Township 12 North, Range 65 West, and the east one-half of Section 1 and the east one-half of Section 2, Township 12 North, Range 65 West, as shown by the plat of the original survey made in 1884 by E. P. Beahm, the closings done as prescribed and authorized by the Act of Congress in 1874 by Fowler and Johnston, a gentleman that subdivided the north half of Township 12 North, Range 65 West (the north half of Township 12 North) was recorded in 1884 in the North Platte (Medium West) (T. 12 N., R. 65 W., S. 34) and the south half of Township 12 North, Range 65 West (the south half of Township 12 North) was recorded in 1884 in the North Platte (Medium West) (T. 12 N., R. 65 W., S. 35). The original survey was made by E. P. Beahm, a gentleman that subdivided the north half of Township 12 North, Range 65 West (the north half of Township 12 North) was recorded in 1884 in the North Platte (Medium West) (T. 12 N., R. 65 W., S. 34) and the south half of Township 12 North, Range 65 West (the south half of Township 12 North) was recorded in 1884 in the North Platte (Medium West) (T. 12 N., R. 65 W., S. 35). The original survey was made by E. P. Beahm, a gentleman that subdivided the north half of Township 12 North, Range 65 West (the north half of Township 12 North) was recorded in 1884 in the North Platte (Medium West) (T. 12 N., R. 65 W., S. 34) and the south half of Township 12 North, Range 65 West (the south half of Township 12 North) was recorded in 1884 in the North Platte (Medium West) (T. 12 N., R. 65 W., S. 35).



- NOTES:**
1. The basis of bearings for this survey is the north line of Township 12 North, Range 65 West, as shown by the plat of the original survey made in 1884 by E. P. Beahm, the closings done as prescribed and authorized by the Act of Congress in 1874 by Fowler and Johnston, a gentleman that subdivided the north half of Township 12 North, Range 65 West (the north half of Township 12 North) was recorded in 1884 in the North Platte (Medium West) (T. 12 N., R. 65 W., S. 34) and the south half of Township 12 North, Range 65 West (the south half of Township 12 North) was recorded in 1884 in the North Platte (Medium West) (T. 12 N., R. 65 W., S. 35).
 2. See sheet 2 for tract and topographic information for Section 3 and the east one-half of Section 4.
 3. See sheet 2 for tract and topographic information for Section 3 and the east one-half of Section 4.
 4. See sheet 2 for tract and topographic information for Section 3 and the east one-half of Section 4.
 5. See sheet 2 for tract and topographic information for Section 3 and the east one-half of Section 4.
 6. See sheet 2 for tract and topographic information for Section 3 and the east one-half of Section 4.
 7. See sheet 2 for tract and topographic information for Section 3 and the east one-half of Section 4.
 8. See sheet 2 for tract and topographic information for Section 3 and the east one-half of Section 4.
 9. See sheet 2 for tract and topographic information for Section 3 and the east one-half of Section 4.
 10. See sheet 2 for tract and topographic information for Section 3 and the east one-half of Section 4.
 11. See sheet 2 for tract and topographic information for Section 3 and the east one-half of Section 4.
 12. See sheet 2 for tract and topographic information for Section 3 and the east one-half of Section 4.
 13. See sheet 2 for tract and topographic information for Section 3 and the east one-half of Section 4.
 14. See sheet 2 for tract and topographic information for Section 3 and the east one-half of Section 4.
 15. See sheet 2 for tract and topographic information for Section 3 and the east one-half of Section 4.
 16. See sheet 2 for tract and topographic information for Section 3 and the east one-half of Section 4.
 17. See sheet 2 for tract and topographic information for Section 3 and the east one-half of Section 4.
 18. See sheet 2 for tract and topographic information for Section 3 and the east one-half of Section 4.
 19. See sheet 2 for tract and topographic information for Section 3 and the east one-half of Section 4.
 20. See sheet 2 for tract and topographic information for Section 3 and the east one-half of Section 4.
 21. See sheet 2 for tract and topographic information for Section 3 and the east one-half of Section 4.
 22. See sheet 2 for tract and topographic information for Section 3 and the east one-half of Section 4.
 23. See sheet 2 for tract and topographic information for Section 3 and the east one-half of Section 4.
 24. See sheet 2 for tract and topographic information for Section 3 and the east one-half of Section 4.
 25. See sheet 2 for tract and topographic information for Section 3 and the east one-half of Section 4.
 26. See sheet 2 for tract and topographic information for Section 3 and the east one-half of Section 4.
 27. See sheet 2 for tract and topographic information for Section 3 and the east one-half of Section 4.
 28. See sheet 2 for tract and topographic information for Section 3 and the east one-half of Section 4.
 29. See sheet 2 for tract and topographic information for Section 3 and the east one-half of Section 4.
 30. See sheet 2 for tract and topographic information for Section 3 and the east one-half of Section 4.
 31. See sheet 2 for tract and topographic information for Section 3 and the east one-half of Section 4.
 32. See sheet 2 for tract and topographic information for Section 3 and the east one-half of Section 4.
 33. See sheet 2 for tract and topographic information for Section 3 and the east one-half of Section 4.
 34. See sheet 2 for tract and topographic information for Section 3 and the east one-half of Section 4.
 35. See sheet 2 for tract and topographic information for Section 3 and the east one-half of Section 4.
 36. See sheet 2 for tract and topographic information for Section 3 and the east one-half of Section 4.

BOUNDARY SURVEY, ALL OF SECTION 3 AND THE EAST ONE-HALF SECTION 4, TOWNSHIP 12 NORTH, RANGE 65 WEST

**MAP OF SURVEY
A PORTION OF THE NORTH ONE-HALF OF TOWNSHIP 12 NORTH, RANGE 65 WEST**

**BUTCH MARLIN
11193 ORCHARD DRIVE
CHEYENNE, WY. 82001**

2730

CLERK OF LARAMIE COUNTY
CERTIFICATE OF OVERSIZED DOCUMENT

I hereby certify that the following Real Estate Recordings(s), was/were too large for filing.

The original document is located in plat cabinet #: 4 at slot #: 35

Grantor: CARL R. CARMICHAEL

Grantee: TO THE PUBLIC

Document date: 10-9-07

Following is a brief description of the document:

SEC3.E) SEC4 T12N R65W;AKA TR1-27 CHALK BLUFFS ESTATES

Debra K. Lathrop
Clerk of Laramie County

By: 

DEPUTY COUNTY CLERK
MY TERM EXPIRES JAN. 3, 2011

CLERK OF LARAMIE COUNTY
CERTIFICATE OF OVERSIZED DOCUMENT

I hereby certify that the following Real Estate Recordings(s), was/were too large for filing.

The original document is located in plat cabinet #: 4 at slot #: 35 A

Grantor: CARL R. CARMICHAEL

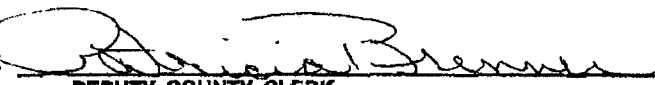
Grantee: TO THE PUBLIC

Document date: 10-9-07

Following is a brief description of the document:

SEC3.E4 SEC4 T12N R65W:AKA TR1-27 CHALK BLUFFS ESTATES

Debra K. Lathrop
Clerk of Laramie County

By: 
DEPUTY COUNTY CLERK
MY TERM EXPIRES JAN. 3, 2011