

PROJECT: 3038
 DATE: 01/18/99
 SURVEYOR: JAG/BA/WP
 DRAWN BY: WDB/BJB

INTERMOUNTAIN PROFESSIONAL SERVICES, INC.
 5801 OSAGE AVENUE CHEYENNE, WYOMING 82009 PHONE: (307) 632-3138

PROJECT: CHEYENNE MEADOWS
 OF
 FINAL PLAT

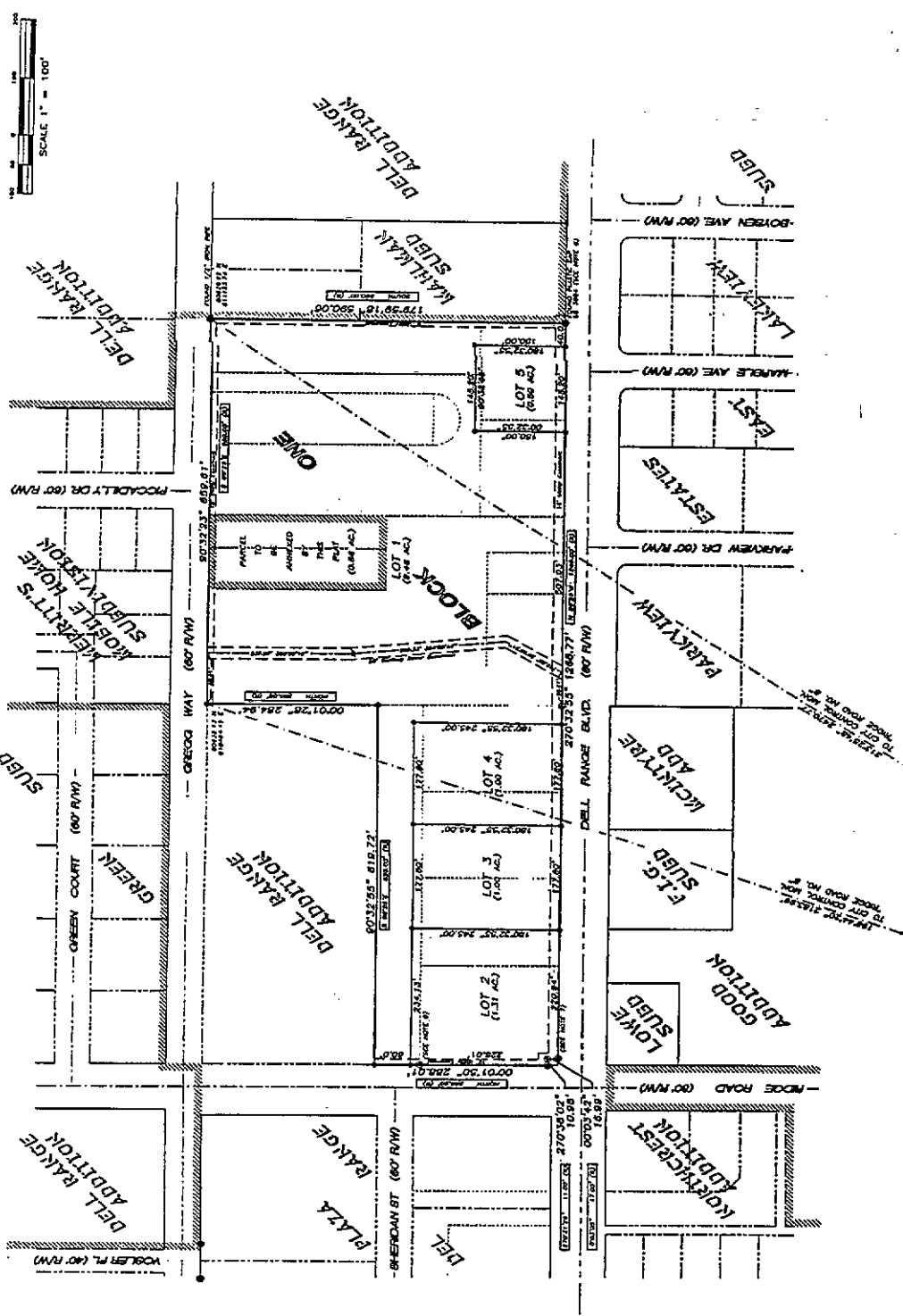
VACATION STATEMENT
 THE PLAT HEREIN SHOWS ALL LOTS, BLOCKS, STREETS AND EASEMENTS PREVIOUSLY SHOWN ON THE PRECEDING RECORDS.

ANNEXATION LIMITS

- 1) EXISTING CITY LIMITS -
- 2) PROPOSED CITY LIMITS -
- 3) TO INCLUDE UN-ANNEXED PORTION OF THE SUBDIVISION.

NOTES

- 1) BASIS OF SURVEY - CITY OF CHEYENNE DATUM (1984) BY CLOSED TRAVERSE FROM ROAD NO. 8 AND "BEECH" ROAD NO. 9.
- 2) ALIGNED AS SHOWN ARE ANGLES POINT FROM NORTH.
- 3) FOUND MONUMENT - 1.5" ALUM. CAP (PLS 3000), UNLESS NOTED.
- 4) SET 8/8" x 3/4" REBAR WITH 1.5" ALUMINUM CAP, (STAMPED "MPS - LS 38417")
- 5) SET 8/8" x 3/4" REBAR WITH 1.5" ALUMINUM CAP, (STAMPED "MPS - LS 38417")
- 6) SET 8/8" x 3/4" REBAR WITH 1.5" ALUMINUM CAP, (STAMPED "MPS - LS 38417")
- 7) FOUND 1.5" ALUM. CAP, PLS 3000, STAMPED NO. 1, PROPERTY CORNER.
- 8) FOUND 1.5" ALUM. CAP, PLS 3000, STAMPED NO. 1, PROPERTY CORNER.
- 9) MONUMENT FALLS 0.11" EAST OF 1/4" ROSE ROAD.



DEDICATION

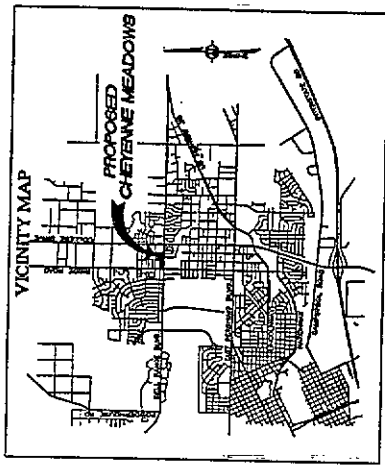
WHEN ALL LOTS BY THESE PRESENTS...
 THE CITY OF CHEYENNE, WYOMING...
 RECEIVED FOR THE CITY OF CHEYENNE, WYOMING...
 THE CITY OF CHEYENNE, WYOMING...
 RECEIVED FOR THE CITY OF CHEYENNE, WYOMING...

ACKNOWLEDGEMENT

STATE OF WYOMING
 COUNTY OF SHERIDAN
 I, MICHAEL A. GALLEN,
 COUNTY CLERK,
 DO HEREBY CERTIFY THAT THE ABOVE REVISION...
 WAS FILED FOR RECORD IN THE PUBLIC RECORDS...
 OF THE COUNTY OF SHERIDAN, WYOMING...
 ON THIS 18TH DAY OF JANUARY, 1999.

APPROVALS

APPROVED BY THE CHEYENNE-LARAMIE COUNTY REGIONAL PLANNING COMMISSION
 THE 22ND DAY OF FEBRUARY, 1999
 DEVELOPMENT DIRECTOR
 APPROVED BY THE CITY COUNCIL OF CHEYENNE, WYOMING
 THE 18TH DAY OF JANUARY, 1999
 MAYOR
 CITY CLERK



LAND DESCRIPTION

A PORTION OF THE S. 1/4 OF SECTION 22, T. 14 N., R. 66 W., 6th P.M., LARAMIE COUNTY WYOMING, BEING MORE PARTICULARLY DESCRIBED AS FOLLOWS:
 ALL OF THE CHEYENNE EAST ADDITION, ALL OF THE EAST POINT SUBDIVISION, TRACT 22, DELL RANGE ADDITION, TRACT 22, DELL RANGE ADDITION, 1ST FLUSH, BEING OR LESS.

STATEMENT OF SURVEYOR

I, SCOTT J. BAUMANN, A PROFESSIONAL LAND SURVEYOR IN THE STATE OF WYOMING, HAVE PREPARED THIS PLAT FROM THE FIELD NOTES OF ACTUAL AND TRUSTED SURVEY MADE BY ME AND MY ASSISTANTS AND ACCORDING TO THE INSTRUMENTS OF SURVEY AND THAT I BELIEVE THE SAME TO BE A TRUE AND CORRECT REPRESENTATION OF THE SAME AS SHOWN BY THE FIELD NOTES AND INSTRUMENTS OF SURVEY AND THAT I BELIEVE THE SAME TO BE A TRUE AND CORRECT REPRESENTATION OF THE SAME AS SHOWN BY THE FIELD NOTES AND INSTRUMENTS OF SURVEY.

DATE: 1/18/99
 SIGNATURE: Scott J. Baumann
 REGISTERED PROFESSIONAL LAND SURVEYOR

FILING RECORD
 REGISTERED PROFESSIONAL LAND SURVEYOR
 DATE: 1/18/99
 SIGNATURE: Scott J. Baumann