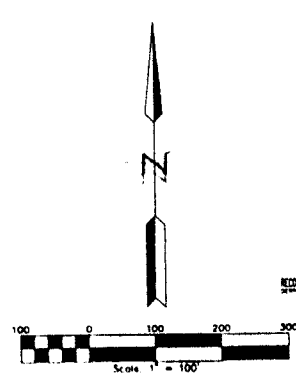
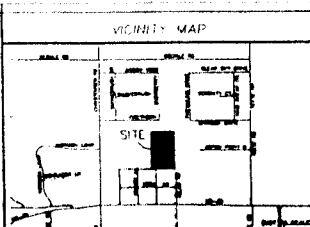
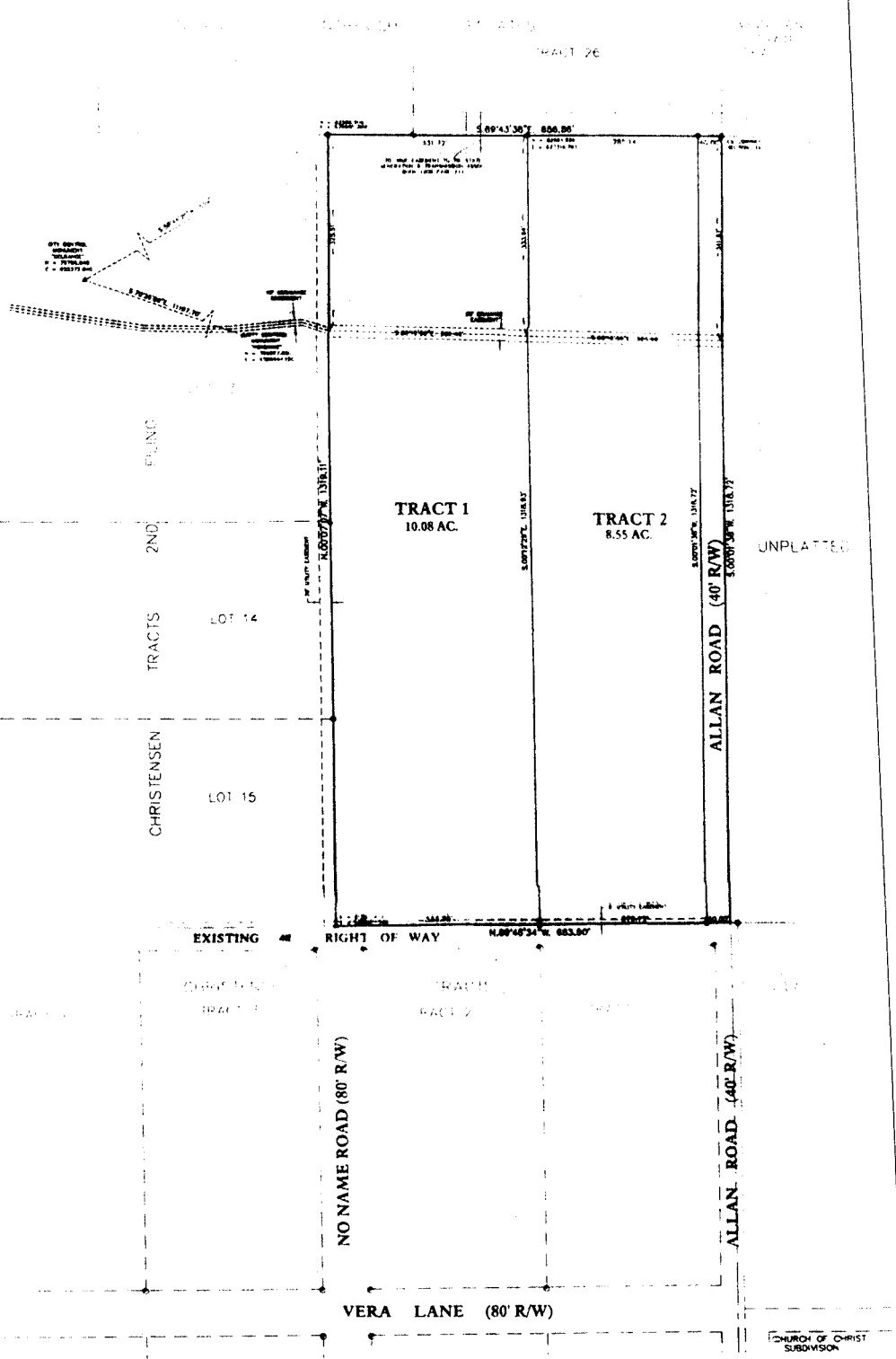


NO PUBLIC WATER OR WASTEWATER SYSTEMS ARE PROPOSED
 NO PUBLIC MAINTENANCE OF ROADS
 FIRE PROTECTION PROVIDED BY FIRE DISTRICT NO. 2



Reception 5/6/2007
 The State of Wyoming
 County of Laramie
 This plat was prepared by
 JAMES STEEL
 REGISTERED PROFESSIONAL LAND SURVEYOR
 No. 1107
 on 5/12/07
 for the purpose of
 showing the location of
 the proposed
 subdivision
 of the above
 described land
 into
 lots
 as shown
 on this plat.
 James Steel
 Registered Professional Land Surveyor
 No. 1107

DEDICATION

John A. Steel, Registered Professional Land Surveyor in the State of Wyoming, hereby dedicates to the public the easements for the maintenance and repair of the fire hydrants and fire lines located on the north side of the 4th P.M. Laramie County, Wyoming, as shown on the plat hereunto annexed.

Beginning at the intersection of the corner monument with a bearing of 120°00'00\"/>

ACKNOWLEDGEMENTS

STATE OF WYOMING
 COUNTY OF LARAMIE
 I, James Steel, Registered Professional Land Surveyor, do hereby certify that the plat hereunto annexed is a true and correct copy of the original plat on file in my office and is a true and correct copy of the original plat on file in the office of the County Clerk of Laramie County, Wyoming.

APPROVALS

Approved by the Cheyenne-Laramie County Regional Planning Commission this 27th day of December, 2007.
 [Signature]
 Development Director

Approved by the Board of County Commissioners, County of Wyoming, this 12th day of December, 2007.
 [Signature]
 Clerk

Approved by the City Council of the City of Cheyenne, Wyoming, this 12th day of December, 2007.
 [Signature] ATTEST: Carol Wittberg, City Clerk

LEGEND

- EXISTING RIGHT OF WAY
- EXISTING EASEMENTS
- PROPOSED RIGHT OF WAY
- PROPOSED EASEMENTS
- PROPOSED LOTS
- PROPOSED TRACTS

NOTES:

1. ALL DISTANCES ARE IN FEET AND DECIMALS THEREOF.
 2. ALL BEARINGS ARE TRUE BEARINGS.
 3. ALL CORNERS ARE TO BE MARKED WITH IRON PIPES AND THE MONUMENTS ARE TO BE SET OR FOUND ON THEM AND THE PLAT CORRECTLY REPRESENTS SAID SURVEY OF THE LAND DESCRIBED HEREON TO THE BEST OF MY KNOWLEDGE.

CERTIFICATE OF SURVEYOR

John A. Steel, Registered Professional Land Surveyor in the State of Wyoming, hereby certifies that this plat of CHRISTENSEN TRACTS 3RD FILING was prepared from official plats and deeds of record and from notes of a field survey conducted by me or under my direct supervision during the month of June, 2007, that the monuments are set or found on them and that the plat correctly represents said survey of the land depicted herein to the best of my knowledge.

CHRISTENSEN TRACTS 3RD FILING

A PORTION OF EXNEYSKY TOWNSHIP 14 NORTH, SECTION 19, RANGE 65 WEST, OF THE 6TH P.M. LARAMIE COUNTY, WYOMING.



STEEL SURVEYING SERVICES, LLC
 PROFESSIONAL LAND SURVEYORS
 1100 WEST 19th STREET, P.O. BOX 20727
 CHEYENNE, WYOMING 82002

SUBDIVISION SETUP FORM



Subdivision Proper Name CHRISTENSEN TRACTS 3RD FILING

Received from JOHN STEIL

Grantor JOHN G. CHRISTENSEN ETUX Document Date 12/15/08

Grantee IN RE CHRISTENSEN TRACTS 3RD FILING

Legal Description M&B PTN E2NE4SW4 SEC19 T14N R65W

SUBDIVISION INFORMATION

Short Alpha Name CHRISTENSEN TR 03F Number 3093

Block Name NONE Lot Name TRACT

Replats Previous Platting Y/N Defunct Subdivision Y/N

Covenants Book/Page COMP Old Hard Copy Book/Number _____

ABSTRACTING INFORMATION

For suffix 40-69 (Existing Parcels Affected)

TWN/SUBD	RNG/BLOCK	BEGIN SEC/LOT	END SEC/LOT	R/V SW
14	65	19		

For suffix 70-99 (New Parcels Created)

BLOCK #	BEGIN LOT	END LOT	BLOCK #	BEGIN LOT	END LOT
3093	NONE	1	2		

