

LAND DESCRIPTION

A parcel of land in the NW/4 of the NE/4 of Section 29, Township 13 North, Range 66 West of the 6th Principal Meridian, Laramie County, Wyoming, more particularly being as follows:

Beginning at the northeast corner of Section 29, Township 13 North, Range 66 West and running south 89 degrees 20 minutes east on the north line of Section 29 for a distance of 1077.00 feet to a found aluminum cap and the point of beginning.

THENCE south 4 degrees 14 minutes 21 seconds east for a distance of 372.50 feet to a 2 1/2" aluminum cap.

THENCE south 87 degrees 28 minutes 21 seconds west for a distance of 427.65 feet to a found aluminum cap.

THENCE north 10 degrees 46 minutes 54 seconds west for a distance of 371.79 feet to a found aluminum cap and on to a Wyoming Highway Department point of beginning.

THENCE north 89 degrees 20 minutes east for a distance of 4162.65 feet and the point of beginning.

Together with and subject to covenants, easements and restrictions of record. Said parcel of land containing 2825 acres more or less.

DEDICATION

KNOW ALL MEN BY THESE PRESENTS that Evan Brent Christopherson, owner of the land herein described and embraced in the plat of the Christopherson Subdivision as evidenced by Ordinance No. 100, 1003, Page 208, Laramie County, Wyoming, do hereby dedicate to the public use of the State of Wyoming the right of way for the Highway shown on this plat or in the application for platting to be their free use and use in accordance with their design and to hereby grant same for the purposes shown herein.

Evan Brent Christopherson
 P.O. Transport, Inc.
 P.O. Transport, Inc.

ACKNOWLEDGEMENT

STATE OF WYOMING)
 COUNTY OF LARAMIE)
 The election instrument was acknowledged before me this 27th day of January, 1993 by Evan Brent Christopherson.

Evan Brent Christopherson
 Notary Public
 Laramie County, Wyoming
 My Commission Expires 11/14/95

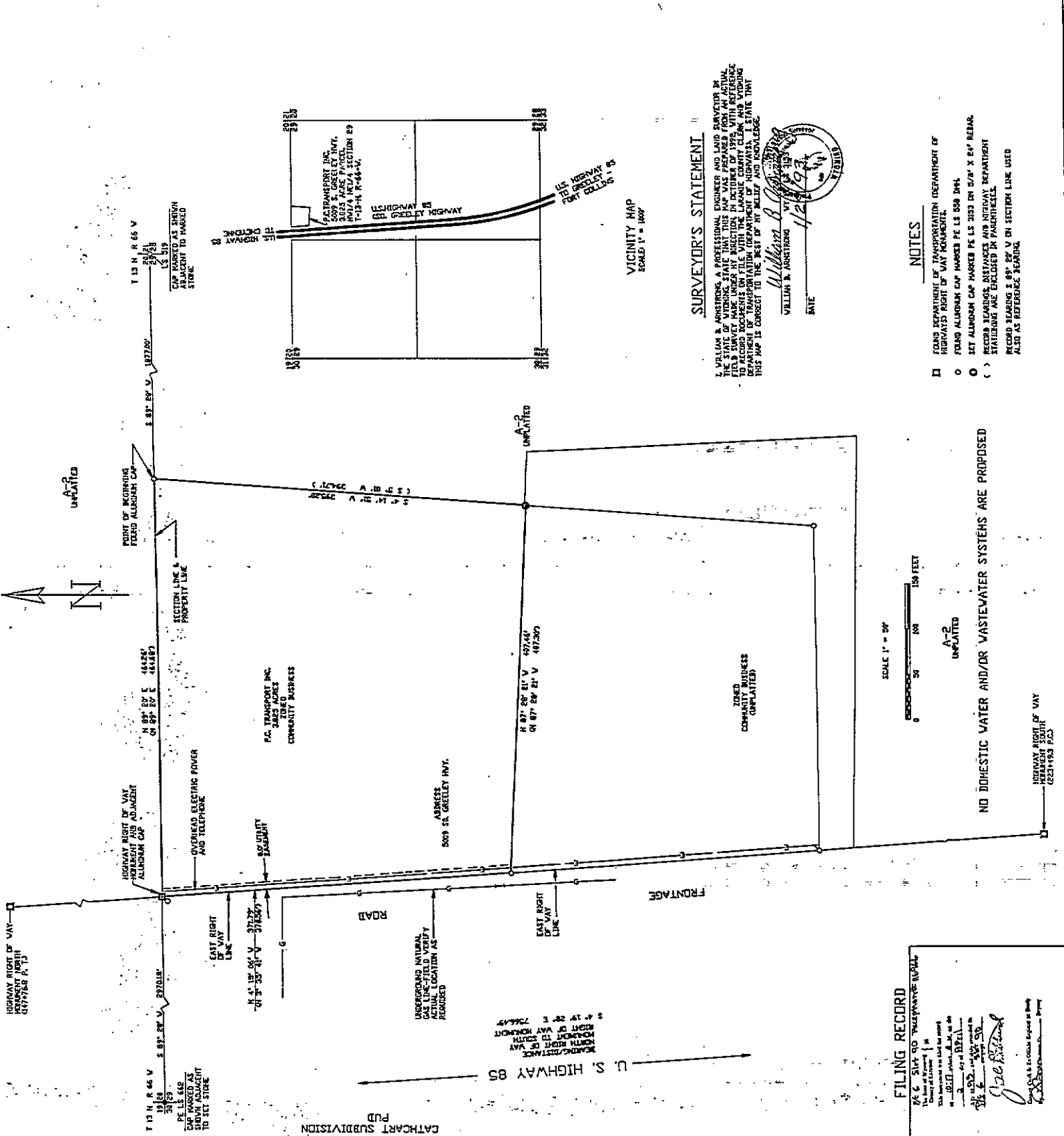
APPROVALS

APPROVED BY THE CLERK OF THE COUNTY COMMISSIONERS OF LARAMIE COUNTY, WYOMING
 THIS 27th day of January, 1993
 DEVELOPMENT DIRECTOR

APPROVED BY THE COUNTY COMMISSIONERS OF LARAMIE COUNTY, WYOMING
 THIS 27th day of January, 1993
 COUNTY CLERK



FINAL PLAT
 IN THE
CHRISTOPHERSON SUBDIVISION
 NW/4 NE1/4 SECTION 29
 TOWNSHIP 13 NORTH, RANGE 66 WEST
 OF THE SIXTH PRINCIPAL MERIDIAN
 LARAMIE COUNTY, WYOMING



SURVEYOR'S STATEMENT
 I, WILLIAM B. ARNSTROM, A PROFESSIONAL ENGINEER AND LAND SURVEYOR IN THE STATE OF WYOMING, HAVE PREPARED FROM AN ACTUAL FIELD SURVEY MADE UNDER MY DIRECTION IN DECEMBER OF 1992, WITH REFERENCE TO RECORD INSTRUMENTS ON FILE WITH THE LARAMIE COUNTY CLERK AND WYOMING COUNTY COMMISSIONERS, THE SURVEY SHOWN ON THIS MAP TO THE BEST OF MY BELIEF AND KNOWLEDGE.



William B. Arnstrom
 WILLIAM B. ARNSTROM
 DATE 1/27/93

- NOTES**
- FOUND DEPARTMENT OF TRANSPORTATION (DEPARTMENT OF HIGHWAYS) RIGHT OF WAY EASEMENTS.
 - FOUND ALUMINUM CAP MARKED P.E. LS 558 DMS.
 - SET ALUMINUM CAP MARKED P.E. LS 303 ON 5/27 X 247 REBAR.
 - () RECORD BEARINGS, DISTANCES AND HIGHWAY DEPARTMENT STATIONING ARE ENCLOSED IN PARENTHESES.
 - ALSO AS REFERENCE BEARING.

SCALE 1" = 50'
 0 50 100 150 FEET

NO DOMESTIC WATER AND/OR WASTEWATER SYSTEMS ARE PROPOSED

FILING RECORD
 P.E. & S.H. 510
 COUNTY OF LARAMIE
 SECTION 29
 TOWNSHIP 13 NORTH
 RANGE 66 WEST
 OF THE SIXTH PRINCIPAL MERIDIAN
 LARAMIE COUNTY, WYOMING

William B. Arnstrom
 WILLIAM B. ARNSTROM
 DATE 1/27/93