


KEITH DOBSON  
ASPEN CONSTRUCTION  
CHEYENNE, WY. 82001

FINAL PLAT  
CHUBB SUBDIVISION

PROJECT NO. 2-2451-3  
DATE JULY 2, 2003

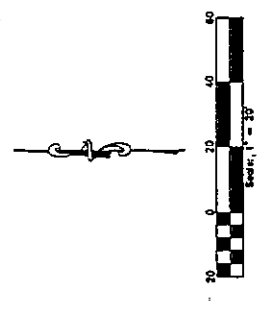
**LAND DESCRIPTION**  
DESCRIPTION OF A PARCEL OF LAND BEING THE WEST ONE-HALF OF TRACT 1, BRINEY TRACTS, SAID PARCEL OF GROUND ALSO BEING SITUATED IN LOT 2, SECTION 19, TOWNSHIP 14 NORTH, RANGE 06 WEST OF THE 8TH PRINCIPAL MERIDIAN, LARAMIE COUNTY, WYOMING AND IS MORE PARTICULARLY DESCRIBED AS FOLLOWS:  
BEGINNING AT THE NORTHWEST CORNER OF SAID TRACT 1, BRINEY TRACTS; THENCE S89°39'04"E ALONG THE NORTH LINE OF SAID TRACT 1, BRINEY TRACTS, A DISTANCE OF 86.52 FEET TO A POINT;  
THENCE S00°00'00"E A DISTANCE OF 200.96 FEET TO A POINT ON THE SOUTH LINE OF SAID TRACT 1, BRINEY TRACTS;  
THENCE S89°32'25"W ALONG SAID SOUTH LINE TRACT 1, BRINEY TRACTS, A DISTANCE OF 86.50 FEET TO THE SOUTHWEST CORNER OF SAID TRACT 1, BRINEY TRACTS;  
THENCE N00°00'00"W ALONG THE WEST LINE OF SAID TRACT 1, BRINEY TRACTS, A DISTANCE OF 200.96 FEET TO THE POINT OF BEGINNING;  
SAID PARCEL OF LAND CONTAINS 0.80 ACRES MORE OR LESS.

**DEDICATION**  
KNOW ALL MEN BY THESE PRESENTS THAT RONALD J. CHUBB AND DONNA E. CHUBB, OWNERS IN THE WHOLE OF THE LAND EMBRACED ON THIS PLAT OF "CHUBB SUBDIVISION", HAVE CAUSED THE SAME TO BE SURVEYED AND PLATTED, AND DO HEREBY DECLARE THIS PLAT OF SAID LANDS AS IT APPEARS ON THIS PLAT TO BE THEIR FREE ACT AND DEED AND IN ACCORDANCE WITH THEIR DESIRES, AND DO HEREBY DEDICATE TO THE PUBLIC THE ROAD EIGHT-FOURWAYS AND GRANT THE EASEMENTS FOR THE PURPOSES INDICATED HEREON.  
*Ronald J. Chubb*  
*Donna E. Chubb*

**ACKNOWLEDGMENT**  
STATE OF WYOMING )  
COUNTY OF LARAMIE )  
THE DEDICATION INSTRUMENT WAS ACKNOWLEDGED BEFORE ME BY RONALD J. CHUBB AND DONNA E. CHUBB ON THIS 22nd DAY OF July, 2003.  
*Deely Briney*  
NOTARY PUBLIC

**APPROVALS**  
APPROVED BY THE CHEYENNE-LARAMIE COUNTY REGION PLANNING COMMISSION THIS DAY 22nd of July, 2003.  
*Lisa Robert*  
DEVELOPMENT DIRECTOR

**STATEMENT OF SURVEYOR**  
I, LUTON D. JONES, A REGISTERED PROFESSIONAL LAND SURVEYOR, STATE OF WYOMING, CERTIFY THAT THIS RE-PLAT WAS PREPARED FROM OFFICIAL PLATS AND DEEDS OF RECORD AND FROM NOTES OF A FIELD SURVEY CONDUCTED BY ME OR UNDER MY DIRECT SUPERVISION DURING THE MONTH OF JULY, 2003, THAT THE MONUMENTS ARE SET OR FOUND AS SHOWN AND THAT THIS PLAT ACCURATELY REPRESENTS AND CORRECTS THE LAND DEPICTED HEREON TO THE BEST OF MY KNOWLEDGE.  
APPROVED BY THE CITY COUNCIL  
*Superintendent*  
CHEYENNE THIS 22nd DAY OF July, 2003.  
*Mary K. R. [Signature]*  
CITY CLERK

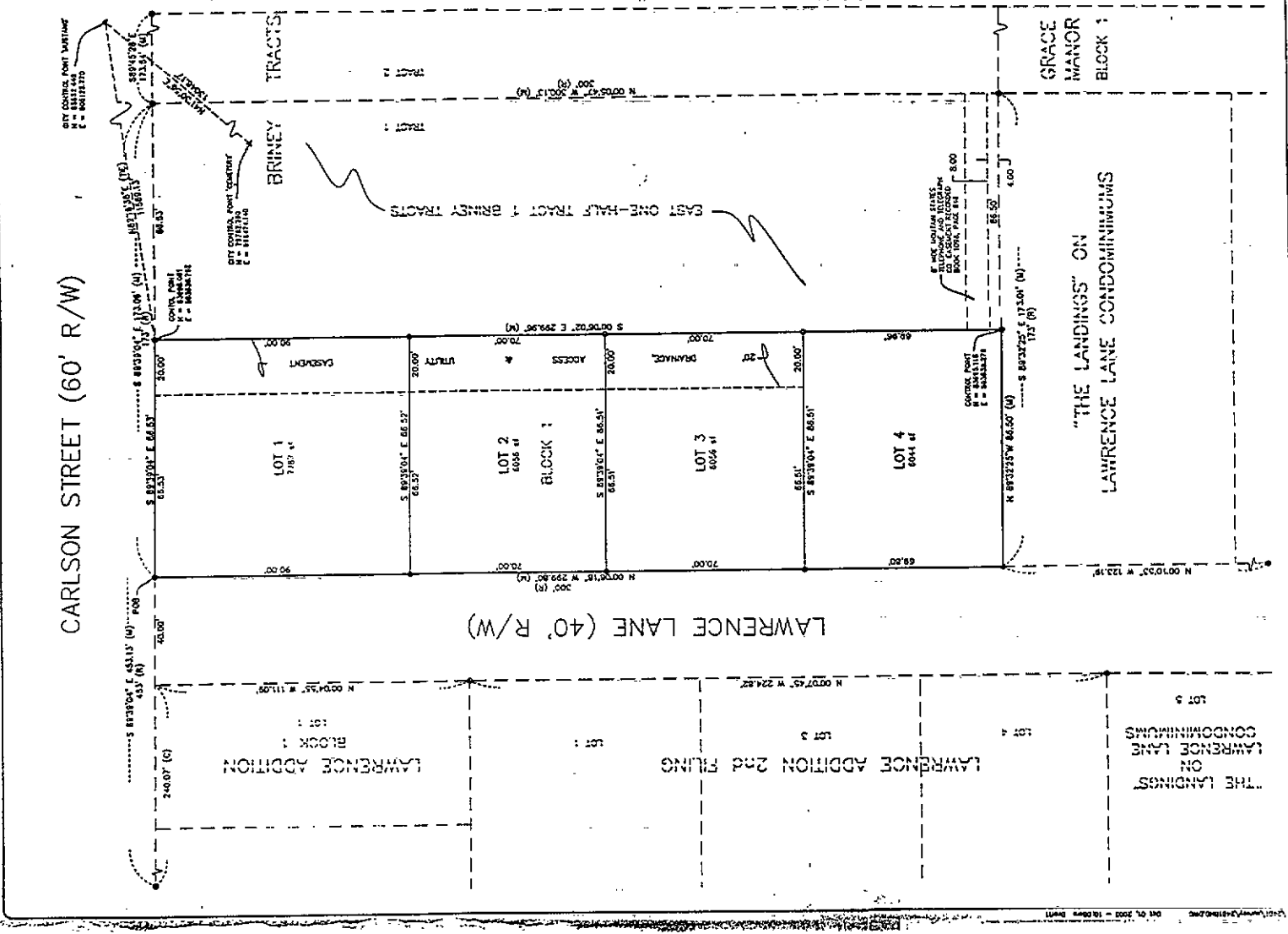


- LEGEND**
- DENOTES FOUND CHISEL "X" IN CONCRETE
  - DENOTES SET 2" ALUM. CAP MARKED "M PC PL 5 1/2" ON P 5 x 24" REBAR
  - DENOTES FOUND 1-1/2" ALUM. CAP
  - DENOTES FOUND 3/4" IRON PIPE
  - (M) DENOTES MEASURED DISTANCE/BEARING
  - (R) DENOTES RECORDED DISTANCE/BEARING

**BASIS OF BEARING**  
CITY OF CHEYENNE DATUM CONTROL POINTS  
CELESTIAL AND "MAGNETIC"

**NOTES**  
PARCEL INCLUDES 11.50' STRIP OF GROUND FROM DEED AND JUDGMENT RECORDED IN BOOK 1733, PAGE 1383-1384 LARAMIE COUNTY CLERKS OFFICE.

**VICINITY MAP**  
RECORDING INFORMATION  
BOOK 1733, PAGE 1383-1384  
FILED FOR RECORD IN THE OFFICE OF THE COUNTY CLERK OF LARAMIE COUNTY, WYOMING, ON JULY 2, 2003.  
RECORDED BY: [Signature]  
FILED RECORD



**LAND DESCRIPTION**  
DESCRIPTION OF A PARCEL OF LAND BEING THE WEST ONE-HALF OF TRACT 1, BRINEY TRACTS, SAID PARCEL OF GROUND ALSO BEING SITUATED IN LOT 2, SECTION 19, TOWNSHIP 14 NORTH, RANGE 06 WEST OF THE 8TH PRINCIPAL MERIDIAN, LARAMIE COUNTY, WYOMING AND IS MORE PARTICULARLY DESCRIBED AS FOLLOWS:  
BEGINNING AT THE NORTHWEST CORNER OF SAID TRACT 1, BRINEY TRACTS; THENCE S89°39'04"E ALONG THE NORTH LINE OF SAID TRACT 1, BRINEY TRACTS, A DISTANCE OF 86.52 FEET TO A POINT;  
THENCE S00°00'00"E A DISTANCE OF 200.96 FEET TO A POINT ON THE SOUTH LINE OF SAID TRACT 1, BRINEY TRACTS;  
THENCE S89°32'25"W ALONG SAID SOUTH LINE TRACT 1, BRINEY TRACTS, A DISTANCE OF 86.50 FEET TO THE SOUTHWEST CORNER OF SAID TRACT 1, BRINEY TRACTS;  
THENCE N00°00'00"W ALONG THE WEST LINE OF SAID TRACT 1, BRINEY TRACTS, A DISTANCE OF 200.96 FEET TO THE POINT OF BEGINNING;  
SAID PARCEL OF LAND CONTAINS 0.80 ACRES MORE OR LESS.

**DEDICATION**  
KNOW ALL MEN BY THESE PRESENTS THAT RONALD J. CHUBB AND DONNA E. CHUBB, OWNERS IN THE WHOLE OF THE LAND EMBRACED ON THIS PLAT OF "CHUBB SUBDIVISION", HAVE CAUSED THE SAME TO BE SURVEYED AND PLATTED, AND DO HEREBY DECLARE THIS PLAT OF SAID LANDS AS IT APPEARS ON THIS PLAT TO BE THEIR FREE ACT AND DEED AND IN ACCORDANCE WITH THEIR DESIRES, AND DO HEREBY DEDICATE TO THE PUBLIC THE ROAD EIGHT-FOURWAYS AND GRANT THE EASEMENTS FOR THE PURPOSES INDICATED HEREON.  
*Ronald J. Chubb*  
*Donna E. Chubb*

**ACKNOWLEDGMENT**  
STATE OF WYOMING )  
COUNTY OF LARAMIE )  
THE DEDICATION INSTRUMENT WAS ACKNOWLEDGED BEFORE ME BY RONALD J. CHUBB AND DONNA E. CHUBB ON THIS 22nd DAY OF July, 2003.  
*Deely Briney*  
NOTARY PUBLIC

**APPROVALS**  
APPROVED BY THE CHEYENNE-LARAMIE COUNTY REGION PLANNING COMMISSION THIS DAY 22nd of July, 2003.  
*Lisa Robert*  
DEVELOPMENT DIRECTOR

**STATEMENT OF SURVEYOR**  
I, LUTON D. JONES, A REGISTERED PROFESSIONAL LAND SURVEYOR, STATE OF WYOMING, CERTIFY THAT THIS RE-PLAT WAS PREPARED FROM OFFICIAL PLATS AND DEEDS OF RECORD AND FROM NOTES OF A FIELD SURVEY CONDUCTED BY ME OR UNDER MY DIRECT SUPERVISION DURING THE MONTH OF JULY, 2003, THAT THE MONUMENTS ARE SET OR FOUND AS SHOWN AND THAT THIS PLAT ACCURATELY REPRESENTS AND CORRECTS THE LAND DEPICTED HEREON TO THE BEST OF MY KNOWLEDGE.  
APPROVED BY THE CITY COUNCIL  
*Superintendent*  
CHEYENNE THIS 22nd DAY OF July, 2003.  
*Mary K. R. [Signature]*  
CITY CLERK

CHEYENNE, WY. 82001

FINAL PLAT

CHUBB SUBDIVISION

PROJECT NO. 2-2451-3

DATE JULY 2, 2003