

CITY TIE DETAIL

DEDICATION

KNOW ALL PERSONS BY THESE PRESENTS, THAT CHEYENNE REAL ESTATE DEVELOPMENT LIMITED Liability Company, A Wyoming Limited Liability Company, owner in fee simple of Block 1, Cole Fire Station Addition - Third Filing, A Subdivision situated in the Southwest Quarter Section 20, Township 21 North, Range 14 West, Laramie County, Wyoming, more particularly described as follows:

Commencing at the Southwest corner of said Section 20; Thence an arc of 143.57 feet, bearing S 89° 12' 21\"/>

has caused the same to be surveyed, replatted and shown of COLE FIRE STATION ADDITION - THIRD FILING, as shown on the plat hereof, and in accordance with the desires, and do hereby grant the easements for the purposes indicated herein.

[Signature]
 Cheyenne Real Estate Development Limited Liability Company
 A Wyoming Limited Liability Company

ACKNOWLEDGMENT

STATE OF WYOMING)
 COUNTY OF BOONE)
 I, the District Clerk, do hereby certify that the foregoing plat was duly filed for record on the 23rd day of January, 1933, by E. Sherry, Secretary of Cheyenne Real Estate Development Limited Liability Company, a Wyoming Limited Liability Company.

[Signature]
 District Clerk

APPROVALS

Approved by the Cheyenne-Laramie County Regional Planning Commission this 14th day of January, 1933.

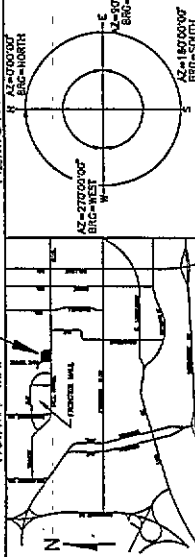
[Signature]
 Development Director

Approved by the City Council of the City of Cheyenne, Wyoming, on the 23rd day of January, 1933.

[Signature]
 Mayor

[Signature]
 Attest: City Clerk

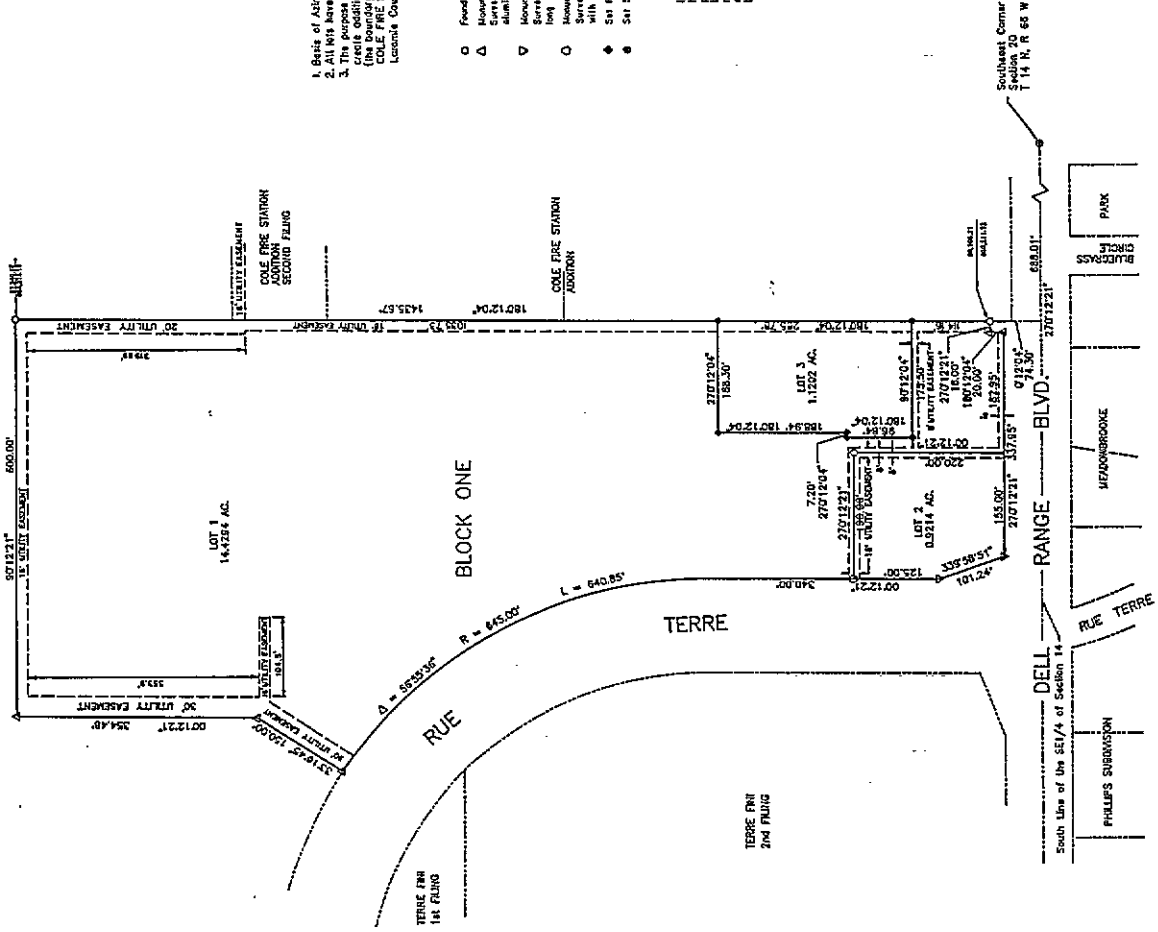
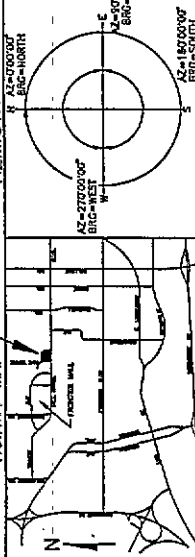
VICINITY MAP



FILING RECORD

THE DISTRICT CLERK OF BOONE COUNTY, WYOMING, HAS FILED FOR RECORD THE FOLLOWING PLAT:
 A Subdivision of Block 1, Cole Fire Station Addition - Third Filing, A Subdivision situated in the Southwest Quarter Section 20, Township 21 North, Range 14 West, Laramie County, Wyoming, more particularly described as follows:
 Commencing at the Southwest corner of said Section 20; Thence an arc of 143.57 feet, bearing S 89° 12' 21\"/>

AZIMUTH



NOTES

1. Basis of Azimuth - City of Cheyenne, Wyo.
2. All lots have access across road through all other lots.
3. The purpose of this plat is to subdivide Lot 1 into two lots and to create additional utility easements. The boundary of Block One (the boundary of the entire subdivision) is shown on the plat on the boundary of the Cole Fire Station Addition - Third Filing as recorded in Laramie County Records at PC 6, 584 66.

LEGEND

- Found aluminum cap on stake stamped "58 L.S. 2500"
- △ Monument as retraced by the preliminary ALTA/MCSM land this survey, with a bearing of 180° 00' 00" and a distance of 1 1/2' aluminum cap stamped "535 2100"
- ▽ Monument as retraced by the preliminary ALTA/MCSM land this survey for Son's Club by S.M. Serrano, bearing 51° 5' 8" and a distance of 100' with aluminum cap stamped "535 2500"
- Monument as retraced by the preliminary ALTA/MCSM land this survey for Son's Club by S.M. Serrano, bearing 51° 5' 8" and a distance of 100' with brass washer stamped "L.S. 2500"
- 58' PVC well with washer, water is stamped with A.L.S. #3881.
- 58' 5/8" x 2' steel pipe well with washer stamped P.L.S. #3931.

SURVEYORS' CERTIFICATE

I, Robert W. Taylor, Registered Professional Land Surveyor in the State of Wyoming, hereby certify that this plat of COLE FIRE STATION ADDITION, THIRD FILING, was prepared from the correct and accurate survey of the land shown hereon and that the monuments set or found on or based on as shown and that this plat correctly represents said survey of the lands shown hereon to the best of my knowledge, information and belief.



**COLE FIRE STATION ADDITION
 FOURTH FILING**

REPLAT
 OF BLOCK 1, COLE FIRE STATION ADDITION, THIRD FILING, CHEYENNE, LARAMIE COUNTY, WYOMING
 EASTERN WYOMING ENGINEERING & SURVEYING PROFESSIONALS
 2410 WEST C STREET, P.O. BOX 99
 TONSUNGUVA, WYOMING 82240
 DRAWN BY: G.M. (SCALE: 1"=100')
 CHECKED BY: P.M.
 DATE: NOVEMBER 7, 1932
 SHEET 1 OF 1