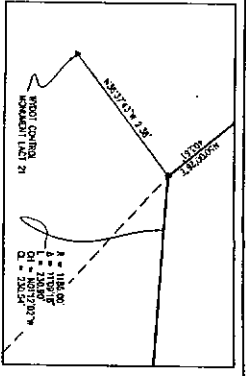
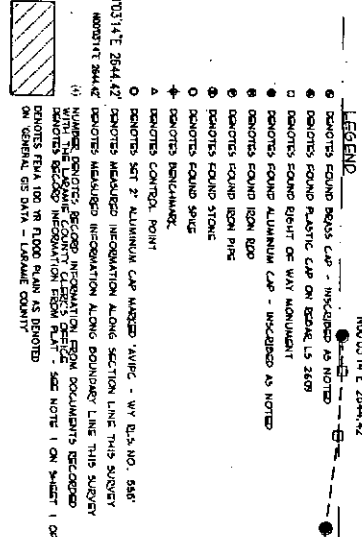


SECTION 36
T.15N, R.67W.



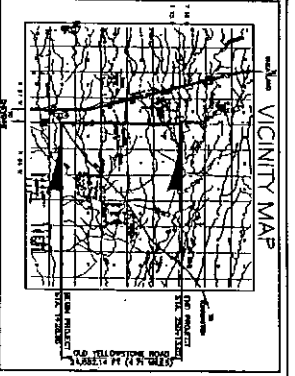
SECTION 31
T.15N, R.67W.



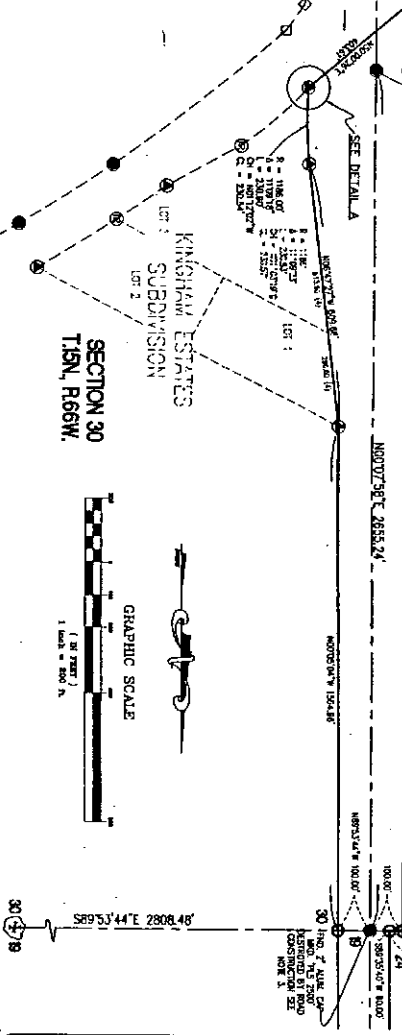
LEGAL DESCRIPTION

LEGAL DESCRIPTION: A detailed text block containing the legal description of the land parcels shown on the plat. It includes bearings, distances, and references to previous surveys and documents. The text is organized into paragraphs corresponding to different sections of the plat.

SECTION 25
T.15N, R.67W.



SECTION 30
T.15N, R.67W.



NOTE: Landowners of record are advised that encroachments are shown on this plat for the purpose of recording and do not constitute a warranty of title. The plat is subject to all existing liens, mortgages, and other interests of record.

BASIS OF BEARINGS:

THE BASIS OF BEARINGS FOR THE PLAT IS THE OBSERVATION OF ROUND POINTS IN SPRING AND OCTOBER, 2002.

APPROVALS:

APPROVED BY THE LARAMIE COUNTY PLANNING COMMISSION: 2002

APPROVED BY THE COUNTY COMMISSIONERS OF LARAMIE COUNTY WYOMING:

2002

APPROVED BY THE DISTRICT CLERK:

2002

APPROVED BY THE DISTRICT CLERK:

2002

COUNTY ROAD 124
FINAL PLAT
FOR
FINAL PLAT
FOR
COUNTY ROAD 124
BEING SITUATED IN PORTIONS OF
SECTIONS 6, 7, 10, 19, & 30, T.15N, R.67W &
SECTIONS 1, 12, 13, 24, 25, T.15N, R.67W &
SECTION 31, T.15N, R.67W, & SECTION 36, T.15N, R.67W,
OF THE SIXTH PRINCIPAL MERIDIAN,
LARAMIE COUNTY, WYOMING.
PREPARED OCTOBER, 2009

9
LARAMIE COUNTY PUBLIC WORKS
2503 E. FOX FARM ROAD
CHEYENNE, WY. 82007
307-633-4302

FINAL PLAT
FOR
COUNTY ROAD 124
BEING SITUATED IN PORTIONS OF
SECTIONS 6, 7, 10, 19, & 30, T.15N, R.67W &
SECTIONS 1, 12, 13, 24, 25, T.15N, R.67W &
SECTION 31, T.15N, R.67W, & SECTION 36, T.15N, R.67W,
OF THE SIXTH PRINCIPAL MERIDIAN,
LARAMIE COUNTY, WYOMING.
PREPARED OCTOBER, 2009

FINAL PLAT
FOR
COUNTY ROAD 124
BEING SITUATED IN PORTIONS OF
SECTIONS 6, 7, 10, 19, & 30, T.15N, R.67W &
SECTIONS 1, 12, 13, 24, 25, T.15N, R.67W &
SECTION 31, T.15N, R.67W, & SECTION 36, T.15N, R.67W,
OF THE SIXTH PRINCIPAL MERIDIAN,
LARAMIE COUNTY, WYOMING.
PREPARED OCTOBER, 2009

FINAL PLAT
FOR
COUNTY ROAD 124
BEING SITUATED IN PORTIONS OF
SECTIONS 6, 7, 10, 19, & 30, T.15N, R.67W &
SECTIONS 1, 12, 13, 24, 25, T.15N, R.67W &
SECTION 31, T.15N, R.67W, & SECTION 36, T.15N, R.67W,
OF THE SIXTH PRINCIPAL MERIDIAN,
LARAMIE COUNTY, WYOMING.
PREPARED OCTOBER, 2009

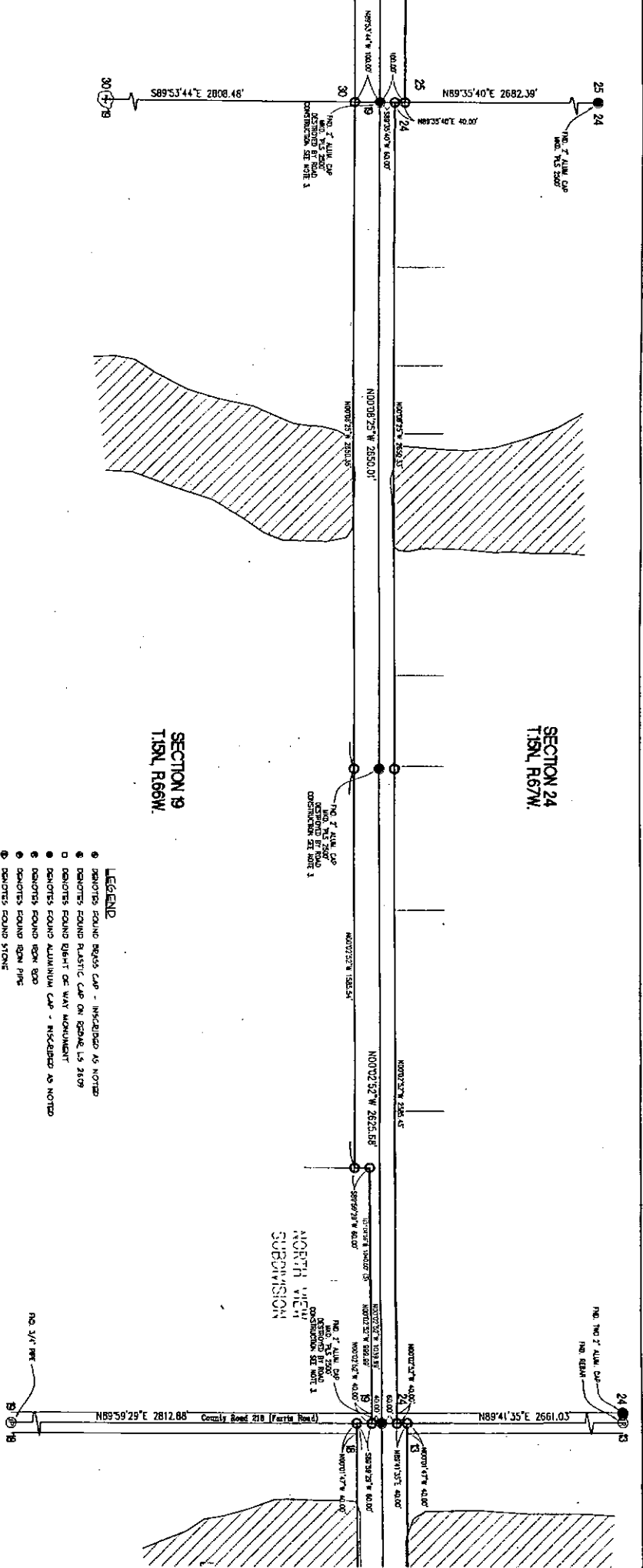
FINAL PLAT
FOR
COUNTY ROAD 124
BEING SITUATED IN PORTIONS OF
SECTIONS 6, 7, 10, 19, & 30, T.15N, R.67W &
SECTIONS 1, 12, 13, 24, 25, T.15N, R.67W &
SECTION 31, T.15N, R.67W, & SECTION 36, T.15N, R.67W,
OF THE SIXTH PRINCIPAL MERIDIAN,
LARAMIE COUNTY, WYOMING.
PREPARED OCTOBER, 2009

FINAL PLAT
FOR
COUNTY ROAD 124
BEING SITUATED IN PORTIONS OF
SECTIONS 6, 7, 10, 19, & 30, T.15N, R.67W &
SECTIONS 1, 12, 13, 24, 25, T.15N, R.67W &
SECTION 31, T.15N, R.67W, & SECTION 36, T.15N, R.67W,
OF THE SIXTH PRINCIPAL MERIDIAN,
LARAMIE COUNTY, WYOMING.
PREPARED OCTOBER, 2009

FINAL PLAT
FOR
COUNTY ROAD 124
BEING SITUATED IN PORTIONS OF
SECTIONS 6, 7, 10, 19, & 30, T.15N, R.67W &
SECTIONS 1, 12, 13, 24, 25, T.15N, R.67W &
SECTION 31, T.15N, R.67W, & SECTION 36, T.15N, R.67W,
OF THE SIXTH PRINCIPAL MERIDIAN,
LARAMIE COUNTY, WYOMING.
PREPARED OCTOBER, 2009

FINAL PLAT
FOR
COUNTY ROAD 124
BEING SITUATED IN PORTIONS OF
SECTIONS 6, 7, 10, 19, & 30, T.15N, R.67W &
SECTIONS 1, 12, 13, 24, 25, T.15N, R.67W &
SECTION 31, T.15N, R.67W, & SECTION 36, T.15N, R.67W,
OF THE SIXTH PRINCIPAL MERIDIAN,
LARAMIE COUNTY, WYOMING.
PREPARED OCTOBER, 2009

FINAL PLAT
FOR
COUNTY ROAD 124
BEING SITUATED IN PORTIONS OF
SECTIONS 6, 7, 10, 19, & 30, T.15N, R.67W &
SECTIONS 1, 12, 13, 24, 25, T.15N, R.67W &
SECTION 31, T.15N, R.67W, & SECTION 36, T.15N, R.67W,
OF THE SIXTH PRINCIPAL MERIDIAN,
LARAMIE COUNTY, WYOMING.
PREPARED OCTOBER, 2009

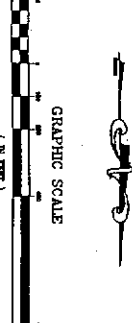


SECTION 19
T15N, R66W

SECTION 24
T15N, R67W



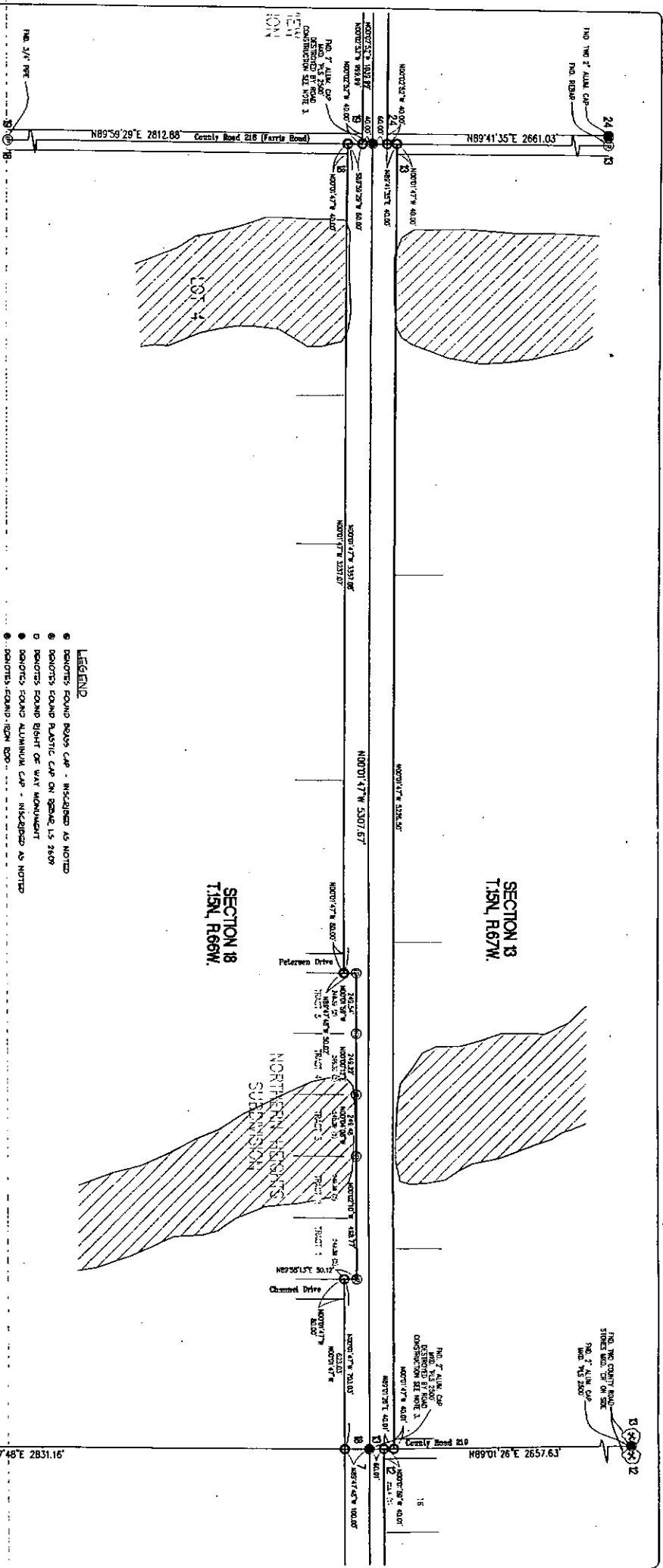
- LEGEND**
- MONUMENTS FOUND BEING CAP - INSCRIBED AS NOTED
 - MONUMENTS FOUND PLASTIC CAP ON BEHAF OF 2439
 - MONUMENTS FOUND EIGHT OF WAY MONUMENT
 - MONUMENTS FOUND ALUMINUM CAP - INSCRIBED AS NOTED
 - MONUMENTS FOUND IRON BOB
 - MONUMENTS FOUND IRON PIPE
 - MONUMENTS FOUND STONE
 - MONUMENTS FOUND SPIKE
 - ⊕ MONUMENTS BENCHMARK
 - ⊕ MONUMENTS CONTROL POINT
 - MONUMENTS SET 2' ALUMINUM CAP MARKED YAVIC - WV BUS NO. 5661
 - MONUMENTS MEASURED INSPECATION ALONG BOUNDARY LINE THIS SUBJECT
 - ⊕ MONUMENT BEAKIN
 - ⊕ MONUMENTS MEASURED INSPECATION ALONG BOUNDARY LINE THIS SUBJECT
 - ⊕ MONUMENTS BEACON
 - ⊕ MONUMENTS BEACON INFORMATION FROM DOCUMENTS BECAME
 - ⊕ MONUMENTS BEACON INFORMATION FROM PLAT - SEE NOTE 1 ON SHEET 1 OF 6
 - ⊕ MONUMENTS BEACON INFORMATION FROM PLAT - SEE NOTE 1 ON SHEET 1 OF 6
 - ⊕ MONUMENTS BEACON INFORMATION FROM PLAT - SEE NOTE 1 ON SHEET 1 OF 6
- (4) MONUMENTS BEACON INFORMATION FROM DOCUMENTS BECAME
MONUMENTS BEACON INFORMATION FROM PLAT - SEE NOTE 1 ON SHEET 1 OF 6
MONUMENTS BEACON INFORMATION FROM PLAT - SEE NOTE 1 ON SHEET 1 OF 6
MONUMENTS BEACON INFORMATION FROM PLAT - SEE NOTE 1 ON SHEET 1 OF 6
MONUMENTS BEACON INFORMATION FROM PLAT - SEE NOTE 1 ON SHEET 1 OF 6
MONUMENTS BEACON INFORMATION FROM PLAT - SEE NOTE 1 ON SHEET 1 OF 6



FINAL PLAT
FOR
COUNTY ROAD 184
THIS PLAT REVALUATES THE SHORE OF WAY

COUNTY ROAD 184
BEING SITUATED IN PORTIONS OF
SECTIONS 5, 7, 16, 19, 4, 30, T15N, R66W/4
SECTIONS 1, 12, 13, 24, 25, T15N, R67W/4
SECTION 31, T15N, R66W/4 SECTION 36, T15N, R67W,
OF THE SIXTH PRINCIPAL MERIDIAN,
LARAMIE COUNTY, WYOMING
PREPARED OCTOBER, 2009

<p>2 - 2891.07</p>	<p>9 COUNTY PUBLIC WORKS FOR LARAMIE COUNTY</p>	<p>COUNTY ROAD 124</p> <p>FINAL PLAT</p>	<p>LARAMIE COUNTY PUBLIC WORKS 2503 E. FOX FARM ROAD CHEYENNE, WY. 82007 307-633-4302</p>
--------------------	--	--	---



LEGEND

- BEARINGS FOUND ROAD CAP - MEASURED AS NOTED
- BEARINGS FOUND PLASTIC CAP OR SPALL IS 2409
- BEARINGS FOUND RIGHT OF WAY MONUMENT
- BEARINGS FOUND ALUMINUM CAP - MEASURED AS NOTED
- BEARINGS FOUND IRON BORN
- BEARINGS FOUND IRON PIPE
- BEARINGS FOUND STONE
- BEARINGS FOUND SPIKE
- BEARINGS FOUND BRICKMAKING
- BEARINGS FOUND CONTROL POINT
- BEARINGS SET IN ALUMINUM CAP MARKED N.A.M.C. - WY BLS. NO. 348
- BEARINGS MEASURED INFORMATION ALONG SECTION LINE THIS SURVEY

(H) NUMBER BEARINGS SECOND INFORMATION ALONG BOUNDARY LINE THIS SURVEY

(I) NUMBER BEARINGS SECOND INFORMATION ALONG BOUNDARY LINE THIS SURVEY

(J) NUMBER BEARINGS SECOND INFORMATION ALONG BOUNDARY LINE THIS SURVEY

(K) NUMBER BEARINGS SECOND INFORMATION ALONG BOUNDARY LINE THIS SURVEY

(L) NUMBER BEARINGS SECOND INFORMATION ALONG BOUNDARY LINE THIS SURVEY

(M) NUMBER BEARINGS SECOND INFORMATION ALONG BOUNDARY LINE THIS SURVEY

(N) NUMBER BEARINGS SECOND INFORMATION ALONG BOUNDARY LINE THIS SURVEY

(O) NUMBER BEARINGS SECOND INFORMATION ALONG BOUNDARY LINE THIS SURVEY

(P) NUMBER BEARINGS SECOND INFORMATION ALONG BOUNDARY LINE THIS SURVEY

(Q) NUMBER BEARINGS SECOND INFORMATION ALONG BOUNDARY LINE THIS SURVEY

(R) NUMBER BEARINGS SECOND INFORMATION ALONG BOUNDARY LINE THIS SURVEY

(S) NUMBER BEARINGS SECOND INFORMATION ALONG BOUNDARY LINE THIS SURVEY

(T) NUMBER BEARINGS SECOND INFORMATION ALONG BOUNDARY LINE THIS SURVEY

(U) NUMBER BEARINGS SECOND INFORMATION ALONG BOUNDARY LINE THIS SURVEY

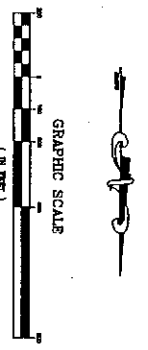
(V) NUMBER BEARINGS SECOND INFORMATION ALONG BOUNDARY LINE THIS SURVEY

(W) NUMBER BEARINGS SECOND INFORMATION ALONG BOUNDARY LINE THIS SURVEY

(X) NUMBER BEARINGS SECOND INFORMATION ALONG BOUNDARY LINE THIS SURVEY

(Y) NUMBER BEARINGS SECOND INFORMATION ALONG BOUNDARY LINE THIS SURVEY

(Z) NUMBER BEARINGS SECOND INFORMATION ALONG BOUNDARY LINE THIS SURVEY



FINAL PLAT

COUNTY ROAD 124

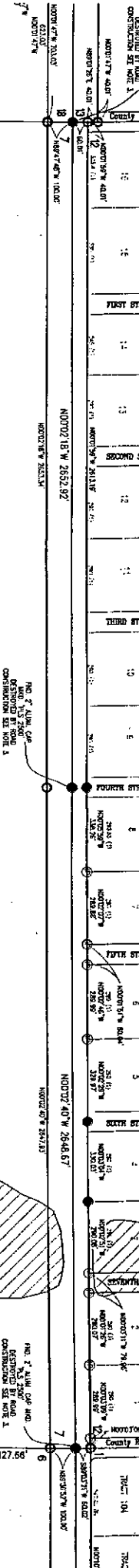
BEING SITUATED IN PORTIONS OF SECTIONS 6, 7, 10, 13, 24, 25, 115N, R67W & SECTIONS 1, 12, 13, 24, 25, 115N, R67W & SECTION 31, T16N, R66W, 4 SECTION 36, T16N, R67W, OF THE SIXTH PRINCIPAL MERIDIAN, LARAMIE COUNTY, WYOMING

PREPARED OCTOBER, 2009

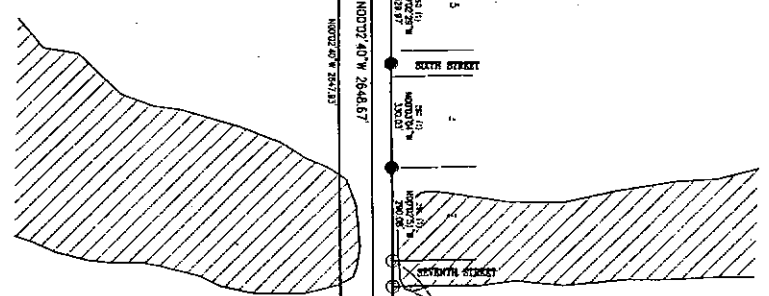
	COUNTY ROAD 124 FINAL PLAT	LARAMIE COUNTY PUBLIC WORKS 2503 E. FOX FARM ROAD CHEYENNE, WY. 82007 307-633-4302	SHEET NO. 3 OF 6
	DATE: 10/27/09 TIME: 10:27:00 AM	DRAWN BY:	CHECKED BY:

NO. 7 ALUM. CAP
NO. 2 ALUM. CAP
NO. 1 ALUM. CAP
CONSTRUCTION SET NOTE A

SECTION 12
T15N, R67W.

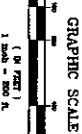


SECTION 7
T15N, R66W.



LEGEND

- DENOTES FOUND RAINY CAP - INCORPORATED AS NOTED
 - DENOTES FOUND PLASTIC CAP ON SPRING LB. 31679
 - DENOTES FOUND RIGHT OF WAY MONUMENT
 - DENOTES FOUND ALUMINUM CAP - INCORPORATED AS NOTED
 - DENOTES FOUND IRON BOP
 - DENOTES FOUND IRON PIPE
 - DENOTES FOUND STONE
 - DENOTES FOUND SPIKE
 - DENOTES BENCHMARK
 - ▲ DENOTES CONTROL POINT
- DENOTES SET 3" ALUMINUM CAP MARKED NINE - VT BLD. NO. 355
- NORTHWEST QUARTER DENOTES MEASURED INFORMATION ALONG SECTION LINE THIS SURVEY
- WITH THE LEASING RECORD INFORMATION FROM DOCUMENTS RECORDED WITH THE LEASING RECORD INFORMATION IN LARAMIE COUNTY PUBLIC WORKS RECORDS IN SECTION 31 T15N, R66W & SECTION 36 T15N, R67W OF THE SIXTH PRINCIPAL MERIDIAN, LARAMIE COUNTY, WYOMING PREPARED OCTOBER, 2009



FINAL PLAT FOR

COUNTY ROAD 124

FOR COUNTY ROAD 124
BEING SITUATED IN PORTIONS OF
SECTIONS 6, 7, 12, 13, 15, & 30, T15N, R66W &
SECTIONS 1, 12, 13, 24, 25, T15N, R67W &
SECTION 31 T15N, R66W & SECTION 36, T15N, R67W,
OF THE SIXTH PRINCIPAL MERIDIAN,
LARAMIE COUNTY, WYOMING
PREPARED OCTOBER, 2009

PROJECT: COUNTY ROAD 124

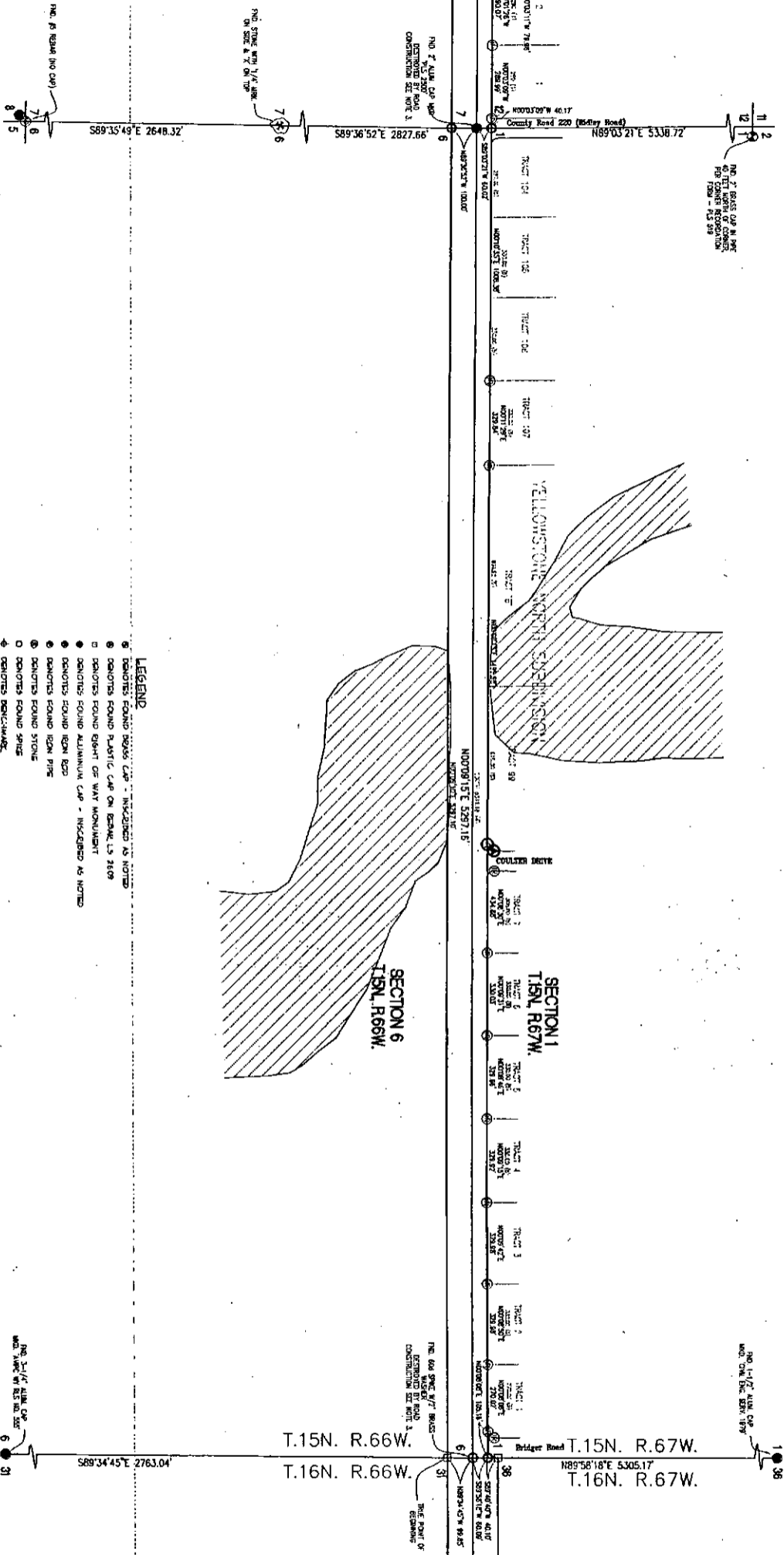
DATE: 10/2009

PREPARED FOR: LARAMIE COUNTY PUBLIC WORKS
2503 E. FOX FARM ROAD
CHEYENNE, WY. 82007
307-633-4302

NO. 4 OF 5

2-2891.07

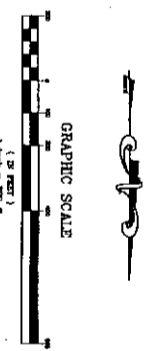
4 OF 5



LEGEND

- MONUMENT FOUND BEING CAP - INCLUDED AS NOTED
- MONUMENT FOUND PLASTIC CAP ON BEAM, L.S. 2009
- MONUMENT FOUND RIGHT OF WAY MONUMENT
- MONUMENT FOUND ALUMINUM CAP - INCLUDED AS NOTED
- MONUMENT FOUND IRON ROD
- MONUMENT FOUND IRON PIPE
- MONUMENT FOUND STONE
- MONUMENT FOUND SPIRE
- ▲ MONUMENT BENCHMARK
- △ MONUMENT CONTROL POINT
- MONUMENT SET 3" ALUMINUM CAP MARKED 'A' W/IC - WY B.S. NO. 888
- MONUMENT SET 3" ALUMINUM CAP MARKED 'B' W/IC - WY B.S. NO. 888
- MONUMENT SET 3" ALUMINUM CAP MARKED 'C' W/IC - WY B.S. NO. 888
- MONUMENT SET 3" ALUMINUM CAP MARKED 'D' W/IC - WY B.S. NO. 888
- MONUMENT SET 3" ALUMINUM CAP MARKED 'E' W/IC - WY B.S. NO. 888
- MONUMENT SET 3" ALUMINUM CAP MARKED 'F' W/IC - WY B.S. NO. 888
- MONUMENT SET 3" ALUMINUM CAP MARKED 'G' W/IC - WY B.S. NO. 888
- MONUMENT SET 3" ALUMINUM CAP MARKED 'H' W/IC - WY B.S. NO. 888
- MONUMENT SET 3" ALUMINUM CAP MARKED 'I' W/IC - WY B.S. NO. 888
- MONUMENT SET 3" ALUMINUM CAP MARKED 'J' W/IC - WY B.S. NO. 888
- MONUMENT SET 3" ALUMINUM CAP MARKED 'K' W/IC - WY B.S. NO. 888
- MONUMENT SET 3" ALUMINUM CAP MARKED 'L' W/IC - WY B.S. NO. 888
- MONUMENT SET 3" ALUMINUM CAP MARKED 'M' W/IC - WY B.S. NO. 888
- MONUMENT SET 3" ALUMINUM CAP MARKED 'N' W/IC - WY B.S. NO. 888
- MONUMENT SET 3" ALUMINUM CAP MARKED 'O' W/IC - WY B.S. NO. 888
- MONUMENT SET 3" ALUMINUM CAP MARKED 'P' W/IC - WY B.S. NO. 888
- MONUMENT SET 3" ALUMINUM CAP MARKED 'Q' W/IC - WY B.S. NO. 888
- MONUMENT SET 3" ALUMINUM CAP MARKED 'R' W/IC - WY B.S. NO. 888
- MONUMENT SET 3" ALUMINUM CAP MARKED 'S' W/IC - WY B.S. NO. 888
- MONUMENT SET 3" ALUMINUM CAP MARKED 'T' W/IC - WY B.S. NO. 888
- MONUMENT SET 3" ALUMINUM CAP MARKED 'U' W/IC - WY B.S. NO. 888
- MONUMENT SET 3" ALUMINUM CAP MARKED 'V' W/IC - WY B.S. NO. 888
- MONUMENT SET 3" ALUMINUM CAP MARKED 'W' W/IC - WY B.S. NO. 888
- MONUMENT SET 3" ALUMINUM CAP MARKED 'X' W/IC - WY B.S. NO. 888
- MONUMENT SET 3" ALUMINUM CAP MARKED 'Y' W/IC - WY B.S. NO. 888
- MONUMENT SET 3" ALUMINUM CAP MARKED 'Z' W/IC - WY B.S. NO. 888

NOTICE: THE 2004 42 DENOTES MEASURED INFORMATION ALONG SECTION LINE THIS SURVEY MONUMENT SHALL DENOTES MEASURED INFORMATION ALONG BOUNDARY LINE THIS SURVEY WITH THE LARAMIE COUNTY GLENN'S OFFICE DENOTES MEASURED INFORMATION FROM THIS SURVEY - SEE NOTE 1 ON SHEET 1 OF 6 DENOTES REAM 100 MM FLOOR PLATE AS DENOTED ON SHEET 05 SHEET - DANIEL COUNTY



FINAL PLAT

FOR COUNTY ROAD 124

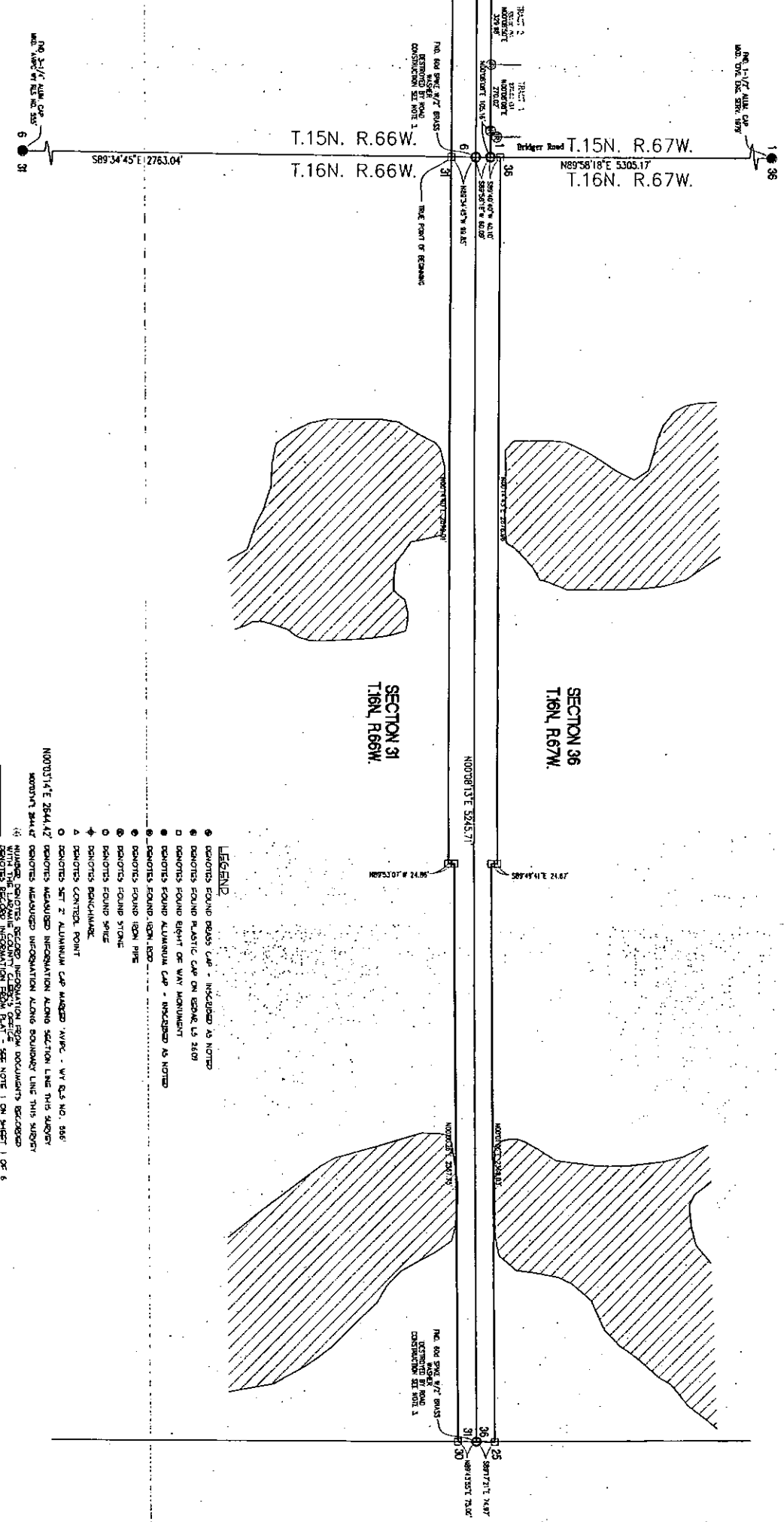
THIS PLAT ESTABLISHES THE RIGHT OF WAY BEING SITUATED IN PORTIONS OF SECTIONS 6, 7, 10, 15, & 30, T.15N. R.66W. & SECTIONS 1, 12, 13, 24, 25, T.15N. R.67W. & SECTIONS 31, T.16N. R.66W. & SECTION 36, T.16N. R.67W. OF THE SIXTH PRINCIPAL MERIDIAN, LARAMIE COUNTY, WYOMING PREPARED OCTOBER, 2009

PREPARED FOR
LARAMIE COUNTY PUBLIC WORKS
2503 E. FOX FARM ROAD
CHEYENNE, WY. 82007
307-633-4302

QDI
LARAMIE COUNTY ATTORNEY
2-2891.07
5 of 6

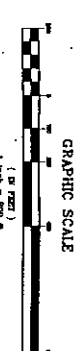
PROJECT	COUNTY ROAD 124
DRAWN BY	FINAL PLAT

DATE	
NO.	
BY	
CHK	



LEGEND

- DENOTES FOUND BRASS CAP - INCORPORATED AS NOTED
- DENOTES FOUND PLASTIC CAP ON BRASS (LS 3409)
- DENOTES FOUND EIGHT OF WAY MONUMENT
- DENOTES FOUND ALUMINUM CAP - INCORPORATED AS NOTED
- DENOTES FOUND IRON ROD
- DENOTES FOUND IRON PIPE
- DENOTES FOUND STONE
- DENOTES FOUND SPICE
- ◆ DENOTES BENCHMARK
- ▲ DENOTES CONTROL POINT
- DENOTES SET 2" ALUMINUM CAP MARKED W/IRC - WY G.S. NO. 306
- DENOTES MEASURED INCORPORATION ALONG SECTION LINE THIS SURVEY
- MONUMENT SHOWN DENOTES MEASURED INCORPORATION ALONG BOUNDARY LINE THIS SURVEY
- 1/4" NUMBER DENOTES RECORD INCORPORATION FROM DOCUMENTS BELONGING WITH THE LARAMIE COUNTY CLERK'S OFFICE
- 1/4" DENOTES FEMA 100 OR FLOOD PLAIN AS DENOTED ON GENERAL GIS DATA - LARAMIE COUNTY



FINAL PLAN

COUNTY ROAD 124

THIS PLAN SUPERSEDES THE RIGHT OF WAY FOR COUNTY ROAD 124 BEING SITUATED IN PORTIONS OF SECTIONS 6, 7, 10, 19, & 30, T.15N. R.66W. & SECTIONS 1, 12, 13, 24, 25, T.15N. R.67W. & SECTIONS 31, T.16N. R.66W. & SECTION 36, T.16N. R.67W. OF THE SIXTH PRINCIPAL MERIDIAN, LARAMIE COUNTY, WYOMING PREPARED OCTOBER, 2009

RECORDED IN THE PUBLIC RECORDS OF LARAMIE COUNTY, WYOMING, BOOK 18, PAGE 113E

	PROJECT	COUNTY ROAD 124	LARAMIE COUNTY PUBLIC WORKS 2503 E. FOX FARM ROAD CHEYENNE, WY. 82007 307-633-4302	<table border="1"> <tr><th>No.</th><th>Date</th></tr> <tr><td> </td><td> </td></tr> <tr><td> </td><td> </td></tr> <tr><td> </td><td> </td></tr> <tr><td> </td><td> </td></tr> </table>	No.	Date								
	No.	Date												
SHEET NO. 5 TOTAL SHEETS 6	DRAWN BY:	CHECKED BY:	DATE:											

SUBDIVISION SETUP FORM

Subdivision Proper Name COUNTY ROAD 124
 Received from LARAMIE COUNTY PUBLIC WORKS
 Grantor LARAMIE COUNTY Document Date 11-19-09
 Grantee COUNTY ROAD 124

Legal Description M&B PTNS SEC6,7,18,19,30 T15N R66W;PTNS SEC1,12,13,24,25 T15N R67W;
 PTNS SEC31 T16N R66W;PTNS SEC36 T16N R67W;6 PAGES

SUBDIVISION INFORMATION

Short Alpha Name COUNTY RD 124 Number 3120
 Block Name NONE Lot Name NONE
 Replats Previous Platting Y/N Defunct Subdivision Y/N
 Covenants Book/Page _____ Old Hard Copy Book/Number COMP

ABSTRACTING INFORMATION

For suffix 40-69 (Existing Parcels Affected)

TWN/SUBD	RNG/BLOCK	BEGIN SEC/LOT	END SEC/LOT	RV SW
<u>15</u>	<u>66</u>	<u>6</u>	<u>7</u>	
<u>15</u>	<u>66</u>	<u>18</u>	<u>19</u>	
<u>15</u>	<u>66</u>	<u>30</u>		
<u>15</u>	<u>67</u>	<u>1</u>		
<u>15</u>	<u>67</u>	<u>12</u>	<u>13</u>	
<u>15</u>	<u>67</u>	<u>24</u>	<u>25</u>	
<u>16</u>	<u>66</u>	<u>31</u>		
<u>16</u>	<u>67</u>	<u>36</u>		

For suffix 70-99 (New Parcels Created)

BLOCK #	BEGIN LOT	END LOT	BLOCK #	BEGIN LOT	END LOT
<u>3120</u>	<u>NONE</u>				