



SCALE 1"=200'

**CERTIFICATE OF SURVEYOR**  
I, MICHAEL J. CRONIN, A REGISTERED PROFESSIONAL LAND SURVEYOR, DO HEREBY CERTIFY THAT THE SURVEY WAS MADE FROM NOTES TAKEN BY AN ACTUAL SURVEY MADE BY ME IN MARCH 2007 AND THAT THIS MAP, TO THE BEST OF MY KNOWLEDGE AND BELIEF, CORRECTLY AND ACCURATELY REPRESENTS SAID SURVEY.



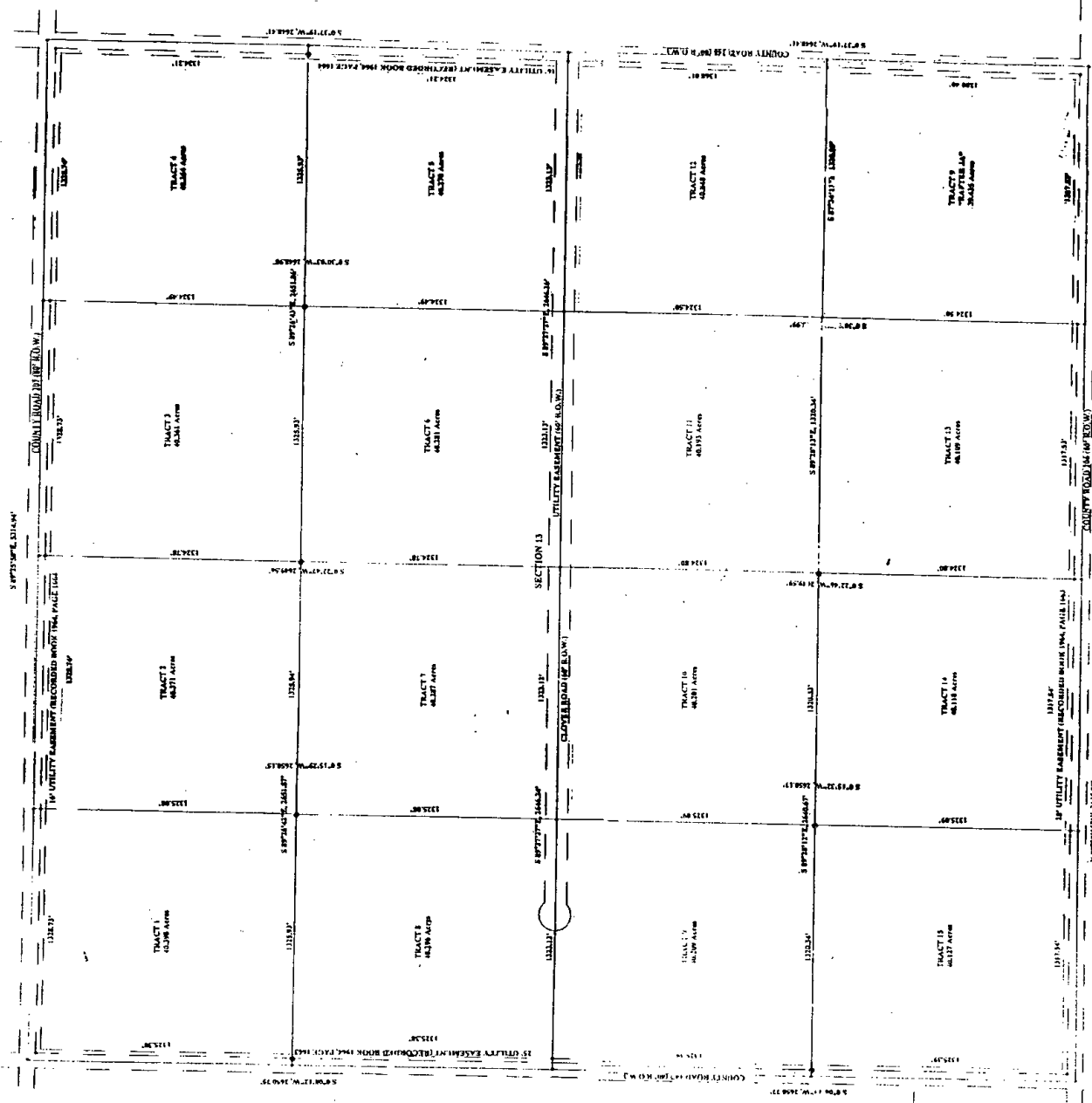
THIS IS A RE-SURVEY OF TRACTS 1-15 ONLY OF "PAPER JA" FROM THE LARAMIE COUNTY RECORDS RECEPTION NO. 45893, BOOK 1963, PAGE 147, AS RECORDED AUGUST 18, 2006, LESS THAN AND EXCEPTING TRACT 9 OF SAID "PAPER JA".

**RECORD OF SURVEY**  
"CLUMSON OLIVERS"  
A RE-SURVEY OF  
TRACTS 1, 2, 3, 4, 5, 6, 7, AND 8  
LESS THAN AND EXCLUDING TRACT 9  
OF "PAPER JA"  
SITUATED IN A-SECTION OF  
SECTION 13,  
T12N, R43W,  
6TH P.M.,  
LARAMIE COUNTY, WYOMING

GAS SURVEYS  
5311 Opden Road  
Cheyenne, Wyoming 82009  
OFFICE PHONE: 337-3333  
FAX: 337-3334  
MARCH 14, 2007

RECORDED IN THE PUBLIC RECORDS OF LARAMIE COUNTY, WYOMING, ON MARCH 14, 2007, AT 10:15 A.M. BY CLERK OF COURTS, LARAMIE COUNTY, WYOMING.

SURVEY CABINET  
PAGE 1 OF 1



LEGEND  
- ROADS ARE NON-PUBLIC AND NON-EXCLUSIVE  
- NO PUBLIC MAINTENANCE OF ROADS  
● EXISTING CORNERS L.S. 2500  
● SET CORNERS L.S. 1943