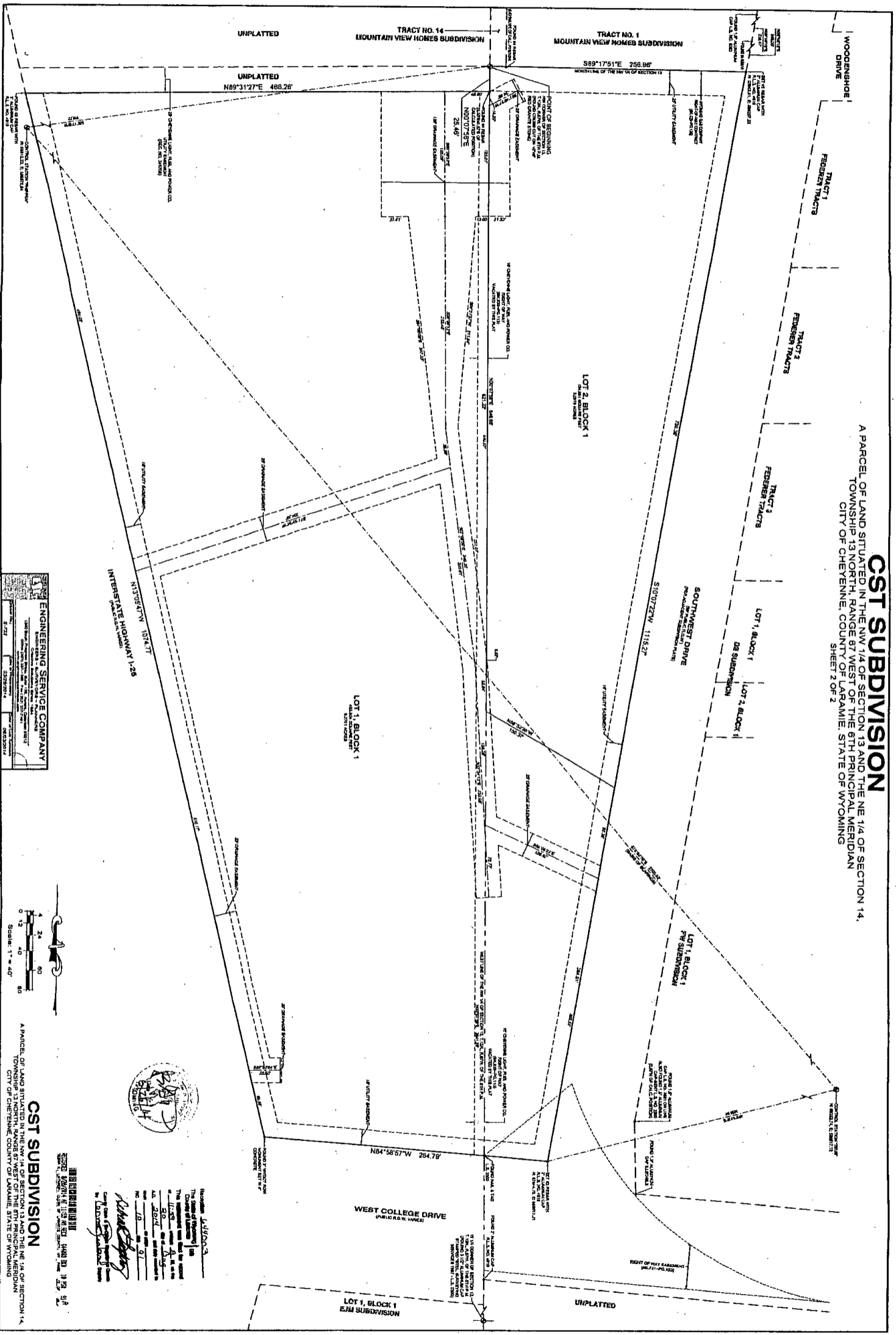


CST SUBDIVISION

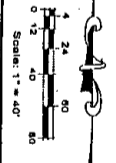
A PARCEL OF LAND SITUATED IN THE NW 1/4 OF SECTION 13 AND THE NE 1/4 OF SECTION 14, TOWNSHIP 13 NORTH, RANGE 87 WEST OF THE 8TH PRINCIPAL MERIDIAN, CITY OF CHEYENNE, COUNTY OF LARAMIE, STATE OF WYOMING. SHEET 2 OF 2



Resubdivided LOT 1 & 2
 The State of Wyoming
 County of Laramie
 City of Cheyenne
 The following is a true and correct copy of the original plat as filed for record in the office of the County Clerk of Laramie County, Wyoming, on this 19th day of August, 1993.
 Attest:
 County Clerk
 Laramie, Wyoming



SENE ENGINEERING SERVICE COMPANY
 1000 W. 10th Street, Suite 100
 Cheyenne, Wyoming 82001
 Phone: (307) 632-1111
 Fax: (307) 632-1112
 Website: www.sene.com



CST SUBDIVISION
 A PARCEL OF LAND SITUATED IN THE NW 1/4 OF SECTION 13 AND THE NE 1/4 OF SECTION 14, TOWNSHIP 13 NORTH, RANGE 87 WEST OF THE 8TH PRINCIPAL MERIDIAN, CITY OF CHEYENNE, COUNTY OF LARAMIE, STATE OF WYOMING. SHEET 2 OF 2