

**SUBDIVISION PLAT SETUP FORM**

RECORDED 1/3/2020 AT 10:28 AM BK# 11 PGS 149  
REC# #: 768736  
Debra K. Lew, CLERK OF LARAMIE COUNTY, WY PAGE 1 OF 1

Subdivision Proper Name D3B SUBDIVISION 2ND FILING  
Received from STEIL SURVEYING SERVICES LLC  
Grantor HABITAT FOR HUMANITY OF LARAMIE COUNTY INC  
Grantee RE D3B SUBD 02F  
Document Date 12/20/2019  
Legal Description REPLAT L4 BL1 D3B SUBD

**SUBDIVISION INFORMATION**

Short Alpha Name D3B SUBD 02F  
Block Name BLOCK Lot Name LOT  
Replats Previous Platting Y Defunct Subdivision N

**ABSTRACTING INFORMATION**

**Existing Parcels Affected**

Township & Range/Subdivision	Beginning Lot/Sec	Ending Lot/Sec	Block #	In-Active Y/N
D3B SUBD	4	4	1	Y

**New Subdivision Parcels Created**

Subdivision Name	Beginning Lot #	Ending Lot #	Block #
D3B SUBD 02F	1	2	1

**DEDICATION**

KNOW ALL PERSONS BY THESE PRESENTS THAT: HABITAT FOR HUMANITY OF LARAMIE COUNTY, INC., owner in fee simple of All of Lot 4, Block 1, D3B SUBDIVISION, City of Cheyenne, Laramie County, Wyoming

Has caused this same to be surveyed, vacated, and replatted to be known as D3B SUBDIVISION 2ND FILING and the subdivision of said land as it appears on this plat to be their free and clear deed in accordance with their desires, and hereby grant the easements for the purposes indicated hereon.

by: Kathleen Wright  
Kathleen Wright as Executive Director for  
Habitat for Humanity of Laramie County, Inc

**ACKNOWLEDGEMENT**

STATE OF WYOMING }  
COUNTY OF LARAMIE } SS

The foregoing instrument was acknowledged before me this 19 day of DECEMBER, 2019, by:

Kathleen Wright as Executive Director for Habitat for  
Humanity of Laramie County, Inc



My Commission Expires: APR 29, 2022

**APPROVALS**

Approved by the Planning & Development Director this 19th day of DECEMBER, 2019.

[Signature]  
Planning & Development Director, City of Cheyenne, Wyoming

Approved by the City Engineer this 19th day of DECEMBER, 2019.

[Signature]  
City Engineer, City of Cheyenne, Wyoming

**CITY ACKNOWLEDGEMENT**

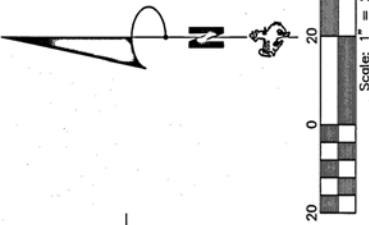
STATE OF WYOMING }  
COUNTY OF LARAMIE } SS

The foregoing instrument was acknowledged before me this 20th day of DECEMBER, 2019, by Charles Bloom, City of Cheyenne Planning & Development Director and Tom-Gobby, P.E., Wesley Bay

[Signature]  
Notary Public, Laramie County, Wyoming

My Commission Expires: 12-21-2023

Reception 768736  
The State of Wyoming  
County of Laramie } SS  
This instrument was filed for record  
at 10:28 o'clock A.M. on the  
3 day of JANUARY  
A.D. 2020 and duly recorded in  
book 11 on page 144  
P/C 11 sec 144  
[Signature]  
County Clerk & Ex-Officio Registrar at Cheyenne



CURVE #	DELTA	RADIUS	CHORD BEARING	CHORD LENGTH	ARC LENGTH
C1(R)	47° 46' 11"	50.00'	N24° 18' 13"E	40.48'	41.89'
C1(W)	47° 44' 05"	50.00'	N24° 17' 22"E	40.46'	41.66'
C2	1° 52' 55"	50.00'	S1° 21' 47"W	1.64'	1.64'
C3	45° 51' 10"	50.00'	S25° 13' 49"W	38.95'	40.01'

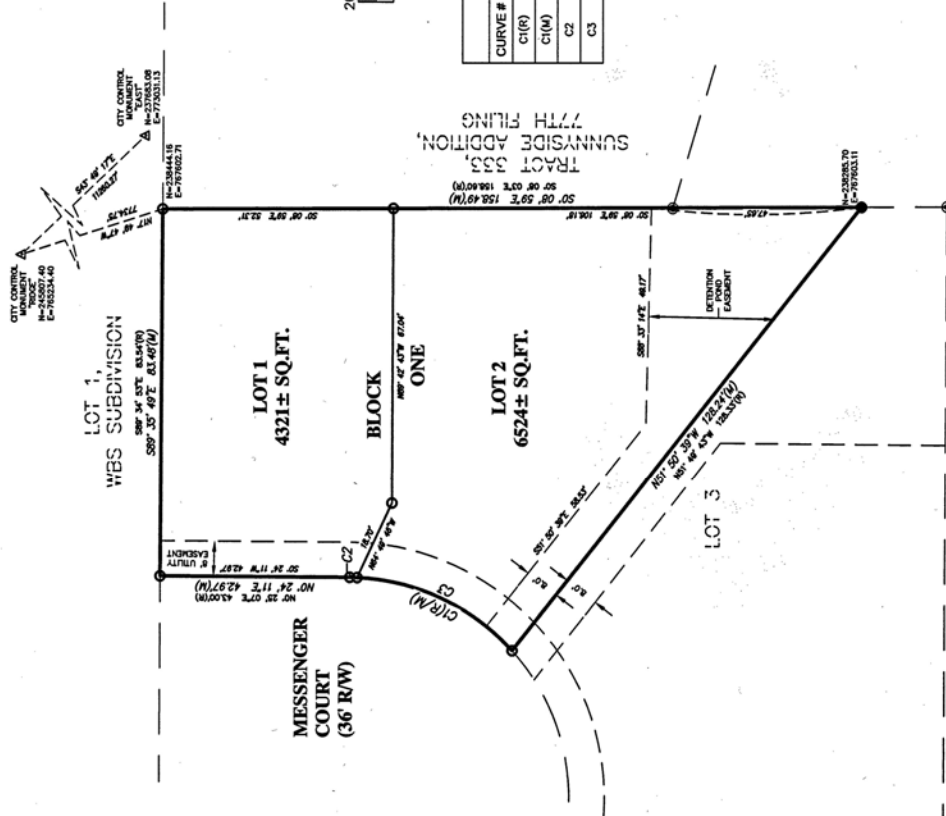
**CERTIFICATE OF SURVEYOR**

I, Jeffrey B. Jones, a Professional Land Surveyor in the State of Wyoming, for and on behalf of Steel Surveying Services, LLC, hereby state, to the best of my knowledge, information and belief, that I have personally supervised and taken during an actual survey made by me or under my direct supervision; and that this map correctly shows the results of said survey and that the monuments found or set are as shown.



**NOTES**

1. BASIS OF BEARINGS - WYOMING STATE PLANE COORDINATES, EAST ZONE, NAD83-2011. US SURVEY FEET, DISTANCES ARE GRID DISTANCES. COMBINATION FACTOR = 0.99966568.
2. ALL UNMONUMENTED LOT CORNERS, ANGLE POINTS, AND POINTS OF CURVATURE TO BE MONUMENTED WITH 1/2" ALUMINUM CAP STAMPED "SSS P.L.S. 5910" ON "X/24" REBAR.
3. NO PORTION OF THE LANS IS CONTAINED WITHIN THE PLAT BOUNDARY AS SHOWN. FALL WITHIN F.E.M. 100-YEAR SPECIAL FLOOD HAZARD AREA PER F.I.R.M. PANEL No.56021C1094F, DATED JANUARY 17, 2007.



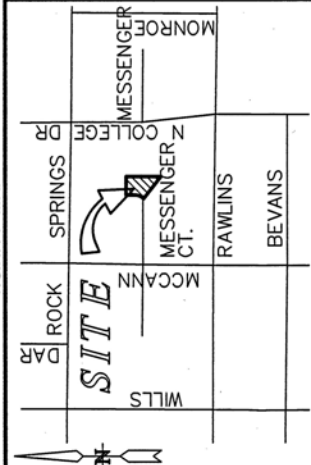
**LEGEND**

- SET 3/4" X 24" LONG REBAR WITH 1/2" ALUMINUM CAP STAMPED "SSS P.L.S. 5910"
- FOUND 1/2" ALUMINUM CAP STAMPED "SSS P.L.S. 5910"
- FOUND 1/2" ALUMINUM CAP STAMPED "P.E.L.S. 598"
- FOUND NAIL
- (M) DENOTES MEASURED DATA THIS SURVEY
- (R) DENOTES RECORD DATA

**VACATION STATEMENT**

IT IS THE INTENT OF THIS REPLAT TO VACATE ALL OF SUBDIVISION BLOCK 1, CITY OF CHEYENNE, LARAMIE COUNTY, WYOMING

**VICINITY MAP**



**FILING RECORD**

RECP #: 768736  
ENCLOSURE, CLERK OF LARAMIE COUNTY, WY PAGE 1 OF 1

REVISED: 12/11/2019  
19075 REPLAT L4 B 1 D3B SUB.DWG

**STEEL SURVEYING SERVICES, LLC**  
PROFESSIONAL LAND SURVEYORS  
PLANNING & DEVELOPMENT SPECIALISTS  
1105 WEST 19th ST. CHEYENNE, WY. 82001 • (307) 654-7273  
756 GILCHRIST ST. WHEATLAND, WY. 82201 • (307) 822-9789  
www.SteelSurvey.com • Info@SteelSurvey.com

**D3B SUBDIVISION 2ND FILING**

AN ADMINISTRATIVE REPLAT OF ALL OF LOT 4, BLOCK 1, D3B SUBDIVISION, CITY OF CHEYENNE, LARAMIE COUNTY, WYOMING. PREPARED DECEMBER, 2019